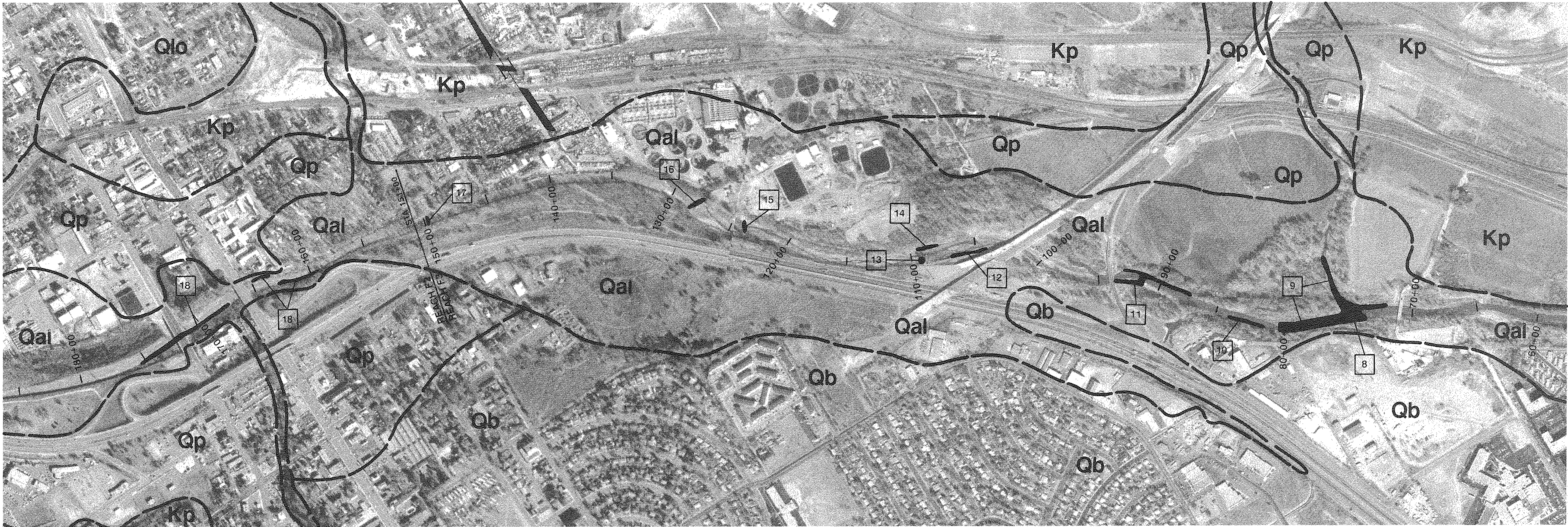


**GEOLOGIC MAP  
LEGEND**

LANDFILL	KNOWN OR SUSPECTED SOLID WASTE
FILL	MAN PLACED FILL (ONLY MAPPED LOCALLY)
Qal	RECENT ALLUVIUM
Qp	PINEY CREEK ALLUVIUM (LOW TERRACE)
Qb	BROADWAY ALLUVIUM
Qlo	LOUVIERS ALLUVIUM
Kp	PIERCE SHALE
Ubr	UNDIFFERENTIATED BEDROCK FORMATIONS



**NOTES**

- 8 PIERRE SHALE IN ERODING CUT BANK ABOUT 10-FOOT HIGH AND ERODING BANK UPSTREAM OF THIS POINT.
- 9 PIERRE SHALE EXPOSED IN BANKS AND ALONG ENTIRE CREEK BOTTOM. EXPOSURES EXTEND UP SPRING CREEK.
- 10 SMALL PIERRE SHALE DROP "SHELF", SOME SHALE EXPOSED ON WEST SIDE.
- 11 EXPOSED PIERRE SHALE IN CUT BANKS AND BOTTOM OF CREEK.
- 12 PIERRE SHALE IN BANK AT FLOWLINE.
- 13 ERODED SAND AND GRAVEL BANK. OLD GLASS IN DEPOSIT INDICATES POSSIBLE 1935 FLOOD DEPOSIT.

**NOTES**

- 14 PIERRE SHALE IN BANK.
- 15 UNDERCUT DROP STRUCTURE. ACTIVE EROSION ALONG BANKS (BOTH SIDES) BELOW THIS POINT. UPSTREAM OF THIS POINT, EAST BANK CONSISTS MAINLY OF DEBRIS AND RUBBLE FILL ENCROACHING TO EDGE OF CREEK, TO ABOUT TEJON STREET CROSSING. WEST BANK MAINLY FINE TO COARSE SAND, HEAVILY VEGETATED. STREAM BOTTOM MATERIALS CONSIST MAINLY OF FINE TO COARSE ARKOSIC SAND WITH SOME GRAVEL AND COBBLES ABOVE DROP.
- 16 DROP STRUCTURE, UNDERCUT AT EAST END.
- 17 SMALL DROP STRUCTURE.
- 18 ERODING BANKS 2-5' HIGH. HEAVILY VEGETATED LOW TERRACE UPSTREAM OF TEJON, EAST SIDE.

**FIGURE 3.5-1**