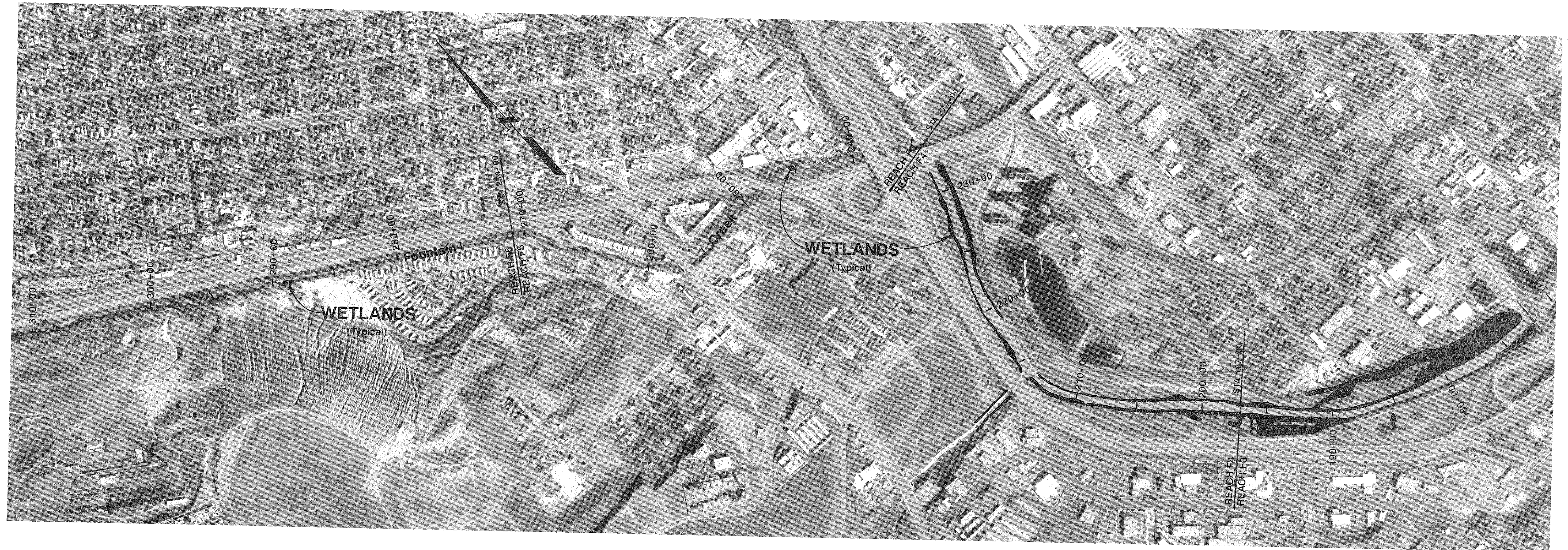


# GENERAL NOTES

FIGURE 3.3-2 (4 SHEETS) COMPLIMENTS THE INFORMATION SHOWN ON FIGURE 3.3-1 (4 SHEETS) WITH WILDLIFE/GENERAL VEGETATION/STREAM CHANNEL INFORMATION.

JURISDICTIONAL WETLANDS WITHIN THE CORRIDOR WERE IDENTIFIED IN ACCORDANCE WITH THE CLEAN WATER ACT OF 1977 (33 CFR SECTION 323.2) WHICH DEFINES WETLAND ECOSYSTEMS AS:

"... THOSE AREAS THAT ARE INUNDATED OR SATURATED BY SURFACE OR GROUNDWATER AT A FREQUENCY AND DURATION SUFFICIENT TO SUPPORT, AND THAT UNDER NORMAL CIRCUMSTANCES DO SUPPORT, A PREVALENCE OF VEGETATION TYPICALLY ADAPTED FOR LIFE IN SATURATED SOIL CONDITIONS. WETLANDS GENERALLY INCLUDE SWAMPS, MARSHES, BOGS AND SIMILAR AREAS."



## LEGEND

- 10+00 STATIONING
- WETLAND AREA