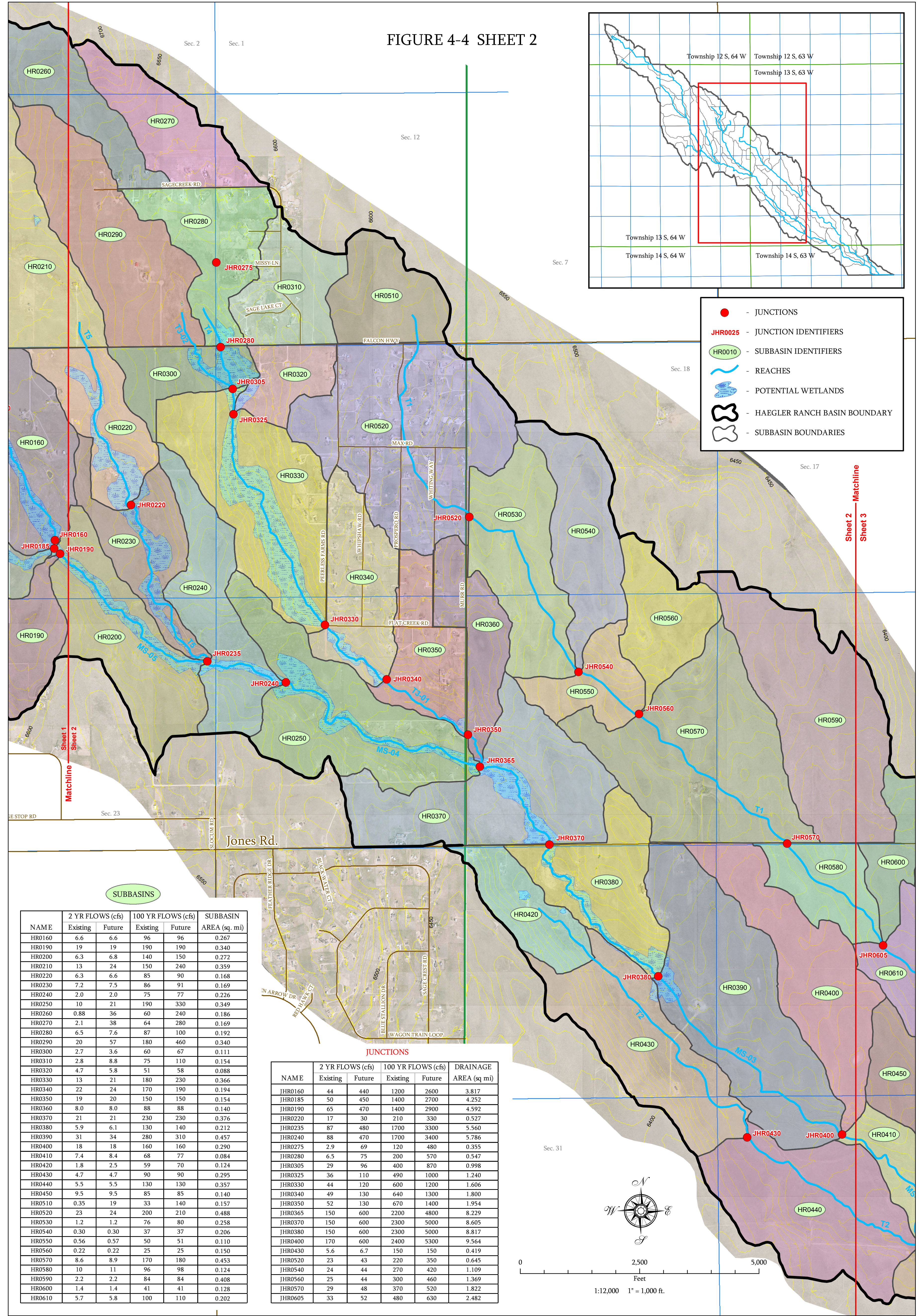


FIGURE 4-4 SHEET 2



**SUBBASINS**

NAME	2 YR FLOWS (cfs)		100 YR FLOWS (cfs)		SUBBASIN AREA (sq. mi)
	Existing	Future	Existing	Future	
HR0160	6.6	6.6	96	96	0.267
HR0190	19	19	190	190	0.340
HR0200	6.3	6.8	140	150	0.272
HR0210	13	24	150	240	0.359
HR0220	6.3	6.6	85	90	0.168
HR0230	7.2	7.5	86	91	0.169
HR0240	2.0	2.0	75	77	0.226
HR0250	10	21	190	330	0.349
HR0260	0.88	36	60	240	0.186
HR0270	2.1	38	64	280	0.169
HR0280	6.5	7.6	87	100	0.192
HR0290	20	57	180	460	0.340
HR0300	2.7	3.6	60	67	0.111
HR0310	2.8	8.8	75	110	0.154
HR0320	4.7	5.8	51	58	0.088
HR0330	13	21	180	230	0.366
HR0340	22	24	170	190	0.194
HR0350	19	20	150	150	0.154
HR0360	8.0	8.0	88	88	0.140
HR0370	21	21	230	230	0.376
HR0380	5.9	6.1	130	140	0.212
HR0390	31	34	280	310	0.457
HR0400	18	18	160	160	0.290
HR0410	7.4	8.4	68	77	0.084
HR0420	1.8	2.5	59	70	0.124
HR0430	4.7	4.7	90	90	0.295
HR0440	5.5	5.5	130	130	0.357
HR0450	9.5	9.5	85	85	0.140
HR0510	0.35	19	33	140	0.157
HR0520	23	24	200	210	0.488
HR0530	1.2	1.2	76	80	0.258
HR0540	0.30	0.30	37	37	0.206
HR0550	0.56	0.57	50	51	0.110
HR0560	0.22	0.22	25	25	0.150
HR0570	8.6	8.9	170	180	0.453
HR0580	10	11	96	98	0.124
HR0590	2.2	2.2	84	84	0.408
HR0600	1.4	1.4	41	41	0.128
HR0610	5.7	5.8	100	110	0.202

**JUNCTIONS**

NAME	2 YR FLOWS (cfs)		100 YR FLOWS (cfs)		DRAINAGE AREA (sq mi)
	Existing	Future	Existing	Future	
JHR0160	44	440	1200	2600	3.817
JHR0185	50	450	1400	2700	4.252
JHR0190	65	470	1400	2900	4.592
JHR0220	17	30	210	330	0.527
JHR0235	87	480	1700	3300	5.560
JHR0240	88	470	1700	3400	5.786
JHR0275	2.9	69	120	480	0.355
JHR0280	6.5	75	200	570	0.547
JHR0305	29	96	400	870	0.998
JHR0325	36	110	490	1000	1.240
JHR0330	44	120	600	1200	1.606
JHR0340	49	130	640	1300	1.800
JHR0350	52	130	670	1400	1.954
JHR0365	150	600	2200	4800	8.229
JHR0370	150	600	2300	5000	8.605
JHR0380	150	600	2300	5000	8.817
JHR0400	170	600	2400	5300	9.564
JHR0430	5.6	6.7	150	150	0.419
JHR0520	23	43	220	350	0.645
JHR0540	24	44	270	420	1.109
JHR0560	25	44	300	460	1.369
JHR0570	29	48	370	520	1.822
JHR0605	33	52	480	630	2.482

