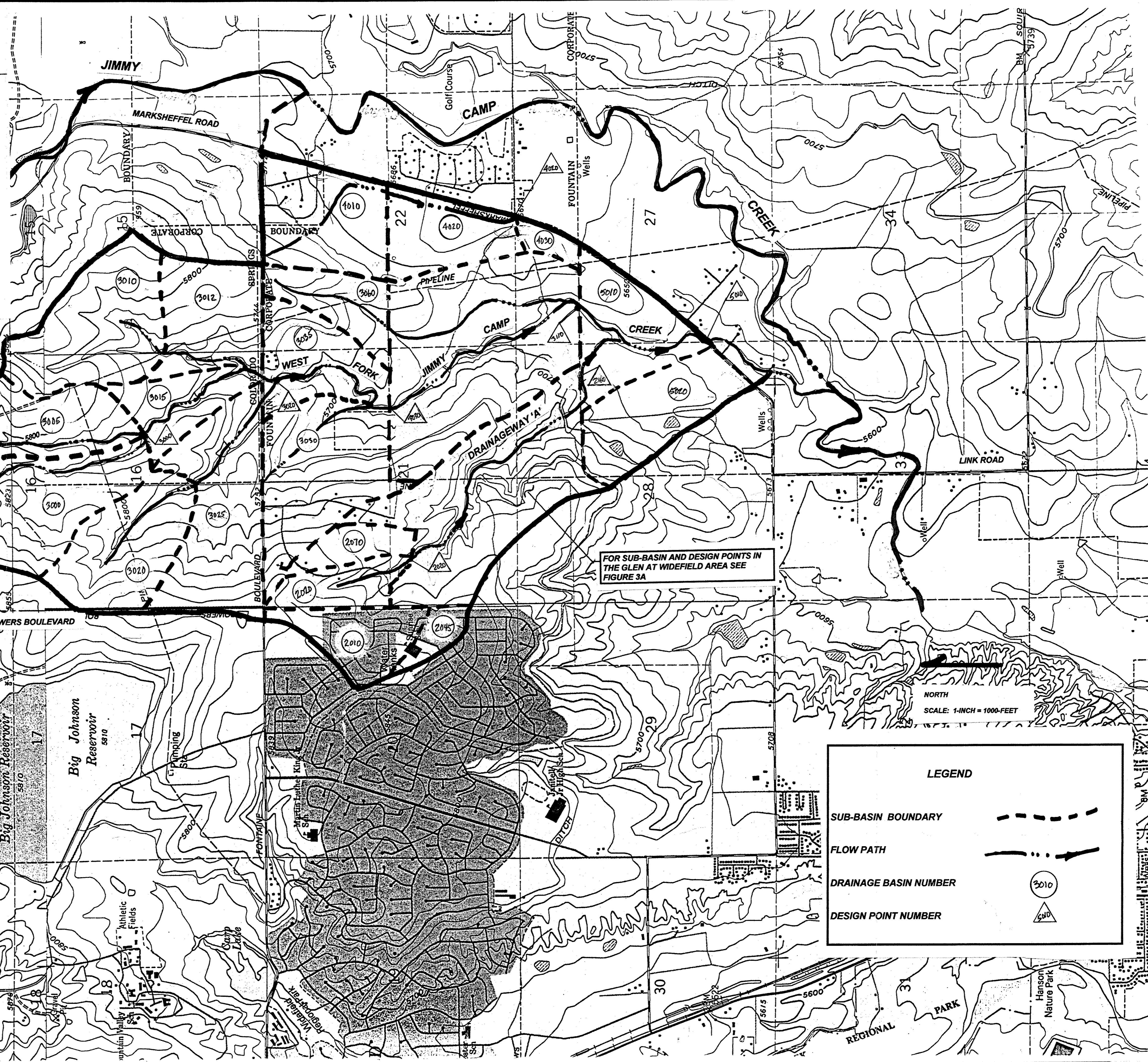


TABLE 3: SUMMARY OF DESIGN POINT DISCHARGES
WEST FORK JIMMY CAMP CREEK DRAINAGE BASIN PLANNING STUDY

DESIGN POINT NUMBER	EX/FUT DRAINAGE AREA (sqm)	EX/FUT DRAINAGE AREA (acres)	EXISTING CONDITION		FUTURE CONDITION	
			5 YR cfs	100 YR cfs	5 YR cfs	100YR cfs
2020	0.190	121.6	47	189	57	210
2040	0.300	192.0	97	335	109	362
2060	0.340	217.6	105	372	120	406
2080	0.130	83.2	17	88	28	113
2090	0.480	307.2	123	473	152	535
2100	0.610	390.4	140	558	181	651
2120	0.660	422.4	148	600	189	692
2130	0.670	428.8	145	594	186	687
2160	0.700	448.0	151	624	196	723
3000	0.660	422.4	147	233	317	935
3020	1.650	1056.0	528	1857	1059	2737
3030	2.070	1324.8	601	2216	1209	3267
3040	2.180	1395.2	618	2316	1239	3364
3050	2.28/2.23	1446/1427	627	2351	1275	3444
3070	0.200	128.0	67	235	86	270
3080	25/05	160/32	82	290	23	72
3090	33/11	211/70	106	373	44	138
3091	2.560	1638.4	732	2722	1380	3843
3100	2.660	1702.4	757	2828	1428	3990
3110	2.670	1708.8	761	2845	1442	4022
4020	0.320	204.8	63	238	145	383
5010	3.530	2259.2	943	3550	1722	4904

TABLE 2: SUMMARY OF SUB-BASIN DISCHARGES
WEST FORK JIMMY CAMP CREEK DRAINAGE BASIN PLANNING STUDY

SUB-BASIN NUMBER	EX/FUT DRAINAGE AREA (sqm)	EX/FUT DRAINAGE AREA (ac)	EXISTING CONDITION (cfs)		FUTURE CONDITION (cfs)	
			5 YR	100 YR	5 YR	100YR
2010	0.125	80.0	40	142	40	142
2020	0.062	39.7	9	47	19	68
2030	0.021	13.4	5	22	6	24
2040	0.026	16.6	5	26	7	29
2045	0.061	39.0	48	124	48	124
2050	0.020	12.8	4	17	4	19
2060	0.024	15.4	5	24	6	30
2070	0.068	43.5	8	44	17	65
2080	0.057	36.5	12	58	15	64
2090	0.019	12.2	3	14	5	19
2100	0.086	60.8	13	64	24	89
2110	0.086	60.8	6	29	8	33
2120	0.034	21.8	9	45	9	45
2130	0.047	30.1	2	11	2	11
2140	0.010	6.4	2	4	2	9
2140	0.007	4.5	2	4	2	9
2150	0.015	9.6	6	20	6	21
2160	0.012	7.7	8	18	17	36
3000	0.420	268.8	140	474	190	598
3005	0.240	153.6	107	347	144	407
3010	0.220	140.8	81	288	138	383
3012	0.210	134.4	54	199	94	272
3015	0.110	70.4	55	181	75	212
3020	0.190	121.6	69	231	204	428
3025	0.290	186.4	82	324	347	712
3030	0.290	186.4	85	262	116	381
3030	0.290	186.4	63	234	106	306
3035	0.160	102.4	63	234	106	306
3040	0.115	73.6	23	110	31	129
3050	0.09/074	31.44/7.4	18	61	56	136
3060	0.119	76.2	48	163	63	189
3070	0.077	49.3	23	78	27	87
3080	0.050	32.0	16	58	23	68
3080	0.062/05	52.52/2.0	27	93	21	67
3090	0.095	60.8	35	123	61	166
3100	0.018	11.5	5	17	14	31
3110	0.190	121.6	38	153	108	270
4020	0.135	86.4	40	90	39	114
4030	0.018	11.5	7	25	20	44
5010	0.156	99.8	35	133	101	246
5020	0.200	128.0	52	200	151.4	382



FOR SUB-BASIN AND DESIGN POINTS IN THE GLEN AT WIDEFIELD AREA SEE FIGURE 3A

NORTH
SCALE: 1-INCH = 1000-FEET

LEGEND

- SUB-BASIN BOUNDARY: Dashed line
- FLOW PATH: Solid line with arrows
- DRAINAGE BASIN NUMBER: Circle with number (e.g., 3010)
- DESIGN POINT NUMBER: Triangle with number (e.g., 2010)

Kiowa Engineering Corporation
1604 South 21st Street
Colorado Springs, Colorado
80904
(719) 630-7342

**West Fork Jimmy Camp Creek
Drainage Basin Planning Study
HYDROLOGIC SUB-BASIN MAP**
EL PASO COUNTY, COLORADO

Project No.:	9893
Date:	6/99
Design:	RNW
Drawn:	CAD
Check:	RNW
Revisions:	

FIGURE 3