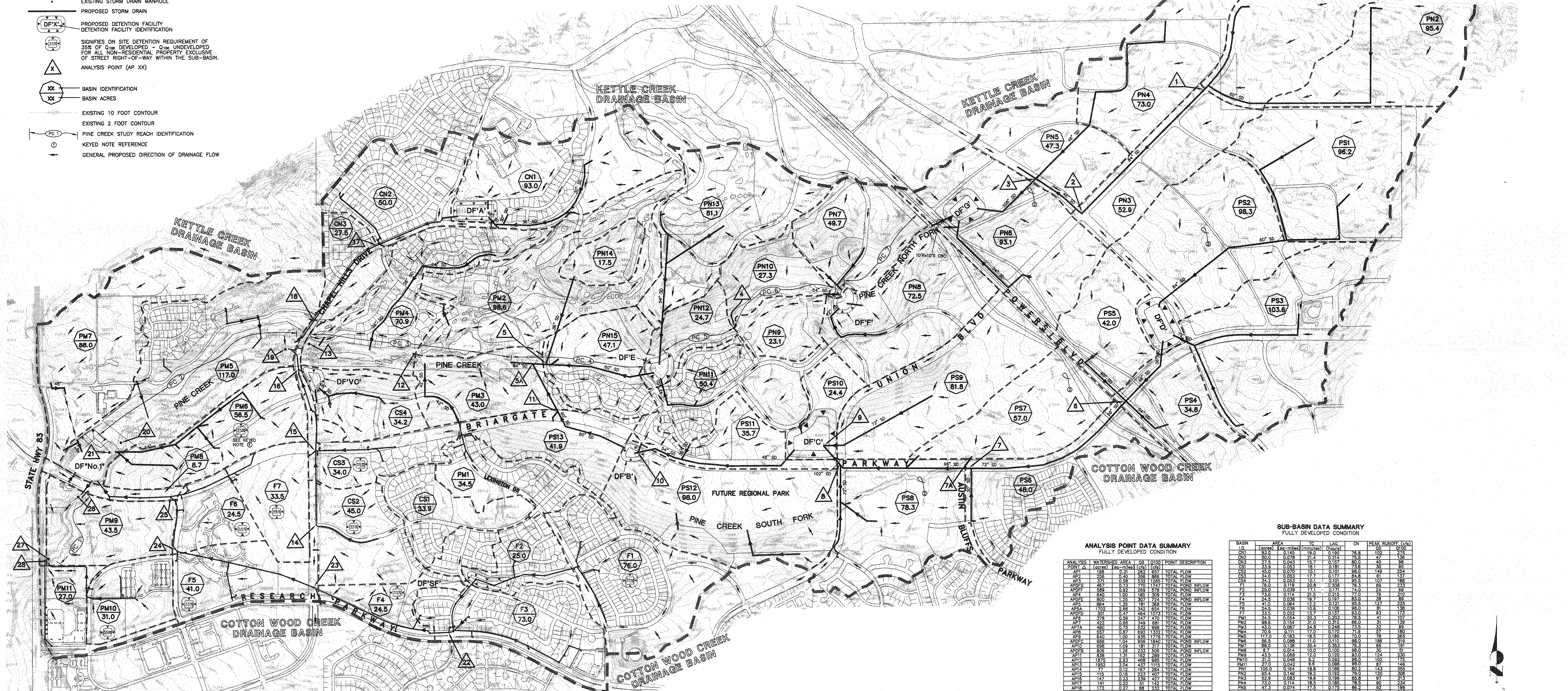


LEGEND

- CURRENT MAJOR DRAINAGE BASIN BOUNDARY
--- CURRENT SUB-BASIN BOUNDARY
--- PREVIOUS MAJOR DRAINAGE BASIN BOUNDARY (1988 DBPS)
--- LIMIT OF CURRENT STUDY
--- EXISTING STORM DRAIN
--- EXISTING STORM DRAIN INLET
--- EXISTING STORM DRAIN MANHOLE
--- PROPOSED STORM DRAIN
--- PROPOSED DETENTION FACILITY
--- DETENTION FACILITY IDENTIFICATION
--- SIGNIFIES ON SITE DETENTION REQUIREMENT OF 35% OF Q100 DEVELOPED - Q100 UNDEVELOPED FOR ALL NON-RESIDENTIAL PROPERTY EXCLUSIVE OF STREET RIGHT-OF-WAY WITHIN THE SUB-BASIN.
--- ANALYSIS POINT (AP XX)
--- BASIN IDENTIFICATION
--- BASIN ACRES
--- EXISTING 10 FOOT CONTOUR
--- EXISTING 2 FOOT CONTOUR
--- PINE CREEK STUDY REACH IDENTIFICATION
--- KEYED NOTE REFERENCE
--- GENERAL PROPOSED DIRECTION OF DRAINAGE FLOW

AMENDMENT 2 TO PINE CREEK DRAINAGE BASIN PLANNING STUDY FULLY DEVELOPED CONDITION BASIN MAP AND MASTER PLAN



GENERAL NOTES:
1. FUTURE STORM DRAINS SHOWN ON THIS PLAN ARE ONLY INTENDED TO INDICATE GENERAL LOCATIONS AND APPROXIMATE SIZES OF FUTURE FACILITIES. ACTUAL STORM DRAIN SIZES AND LOCATIONS SHALL BE DETERMINED WITH MORE DETAILED ANALYSIS AT THE TIME OF DETAILED DESIGN OF THE FACILITIES. IT IS LIKELY THAT ADDITIONAL FACILITIES NOT SHOWN ON THIS PLAN WILL BE REQUIRED.
2. PROPOSED DETENTION FACILITIES SHOWN ON THIS PLAN ARE ONLY INTENDED TO INDICATE GENERAL LOCATIONS AND LAND AREA REQUIRED FOR THESE FACILITIES. ACTUAL LOCATION AND LAND AREA REQUIRED SHALL BE DETERMINED AT THE TIME OF DETAILED DESIGN OF THE FACILITIES.
3. EXCEPT AS OTHERWISE NOTED, THIS PLAN SHALL NOT MODIFY THE REQUIREMENTS OF PREVIOUSLY APPROVED MASTER DEVELOPMENT DRAINAGE PLANS AND FINAL DRAINAGE REPORTS.
4. THE AREA ABOVE POWERS BOULEVARD SHOULD BE RE-EXAMINED AS MORE DETAIL ABOUT LAND PLANNING IS KNOWN. ADDITIONAL DETENTION FACILITIES LOCATED HIGHER IN THE WATERSHED SHOULD BE CONSIDERED.

KEYED NOTES:
1. SUB-BASIN PMS WAS ANALYZED ASSUMING FREE DISCHARGE FROM THE SUB-BASIN. FREE DISCHARGE FROM THE SUB-BASIN MAY BE ALLOWED PROVIDED THE OUTFALL SYSTEM TO PINE CREEK IS SIZED ACCORDINGLY.
2. SECTION OF PINE CREEK TO BE ELIMINATED.

PROPOSED TREATMENT FOR PINE CREEK CHANNEL:
Table with columns: REACH ID, PROPOSED TREATMENT.
REACH 1: LEAVE NATURAL WITH MINOR BANK AND BED STABILIZATION.
REACH 2: LEAVE NATURAL.
REACH 3: LEAVE NATURAL WITH MINOR BANK AND BED STABILIZATION.
REACH 4: REGRADE TO PROVIDE WIDE DEPRESSED AREA TO SERVE AS EMERGENCY RELIEF CHANNEL. CONSTRUCT 54" STORM DRAIN TO CONVEY 100 YEAR DESIGN FLOW.
REACH 5: LEAVE NATURAL WITH BED AND BANK STABILIZATION.
REACH 6: LEAVE NATURAL WITH BED AND BANK STABILIZATION.
REACH 7: LEAVE NATURAL WITH BED AND BANK STABILIZATION.

REGIONAL DETENTION FACILITY DATA SUMMARY FULLY DEVELOPED CONDITION

Table with columns: DETENTION FACILITY ID, PEAK INFLOW (cfs), PEAK OUTFLOW (cfs), ESTIMATED PEAK STORAGE (cu-ft).
Facilities listed include A, B, C, D, E, F, G, H, I, J, K, L, M, N, O, P, Q, R, S, T, U, V, W, X, Y, Z.

ANALYSIS POINT DATA SUMMARY FULLY DEVELOPED CONDITION

Table with columns: ANALYSIS POINT, WATERSHED AREA (sq-ft), Q5 (cfs), Q100 (cfs), POINT DESCRIPTION.
Points listed include AP1 through AP28.

SUB-BASIN DATA SUMMARY FULLY DEVELOPED CONDITION

Table with columns: BASIN ID, AREA (acres), IC (minutes), LAG (minutes), ON (hours), PEAK RUNOFF (cfs).
Basins listed include CN1 through CN14, PM1 through PM11, PS1 through PS14, F1 through F7.