



Wallace Engineering
Structural Consultants, Inc.
Structural and Civil Consultants
9800 Pyramid Court, Suite 350
Englewood, Colorado 80112
303.350.1690, 800.364.5858

THIS DOCUMENT IS PRELIMINARY
IN NATURE AND IS NOT A FINAL,
SIGNED AND SEALED DOCUMENT.



ATLAS PREPARATORY SCHOOL

1515 Pulsar Dr
Colorado Springs, CO 80916

DRAINAGE DESIGN

SEPTEMBER 2019

MARK	DATE	DESCRIPTION

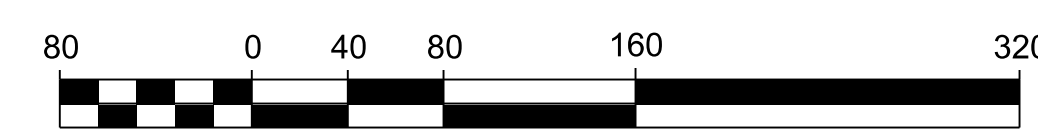
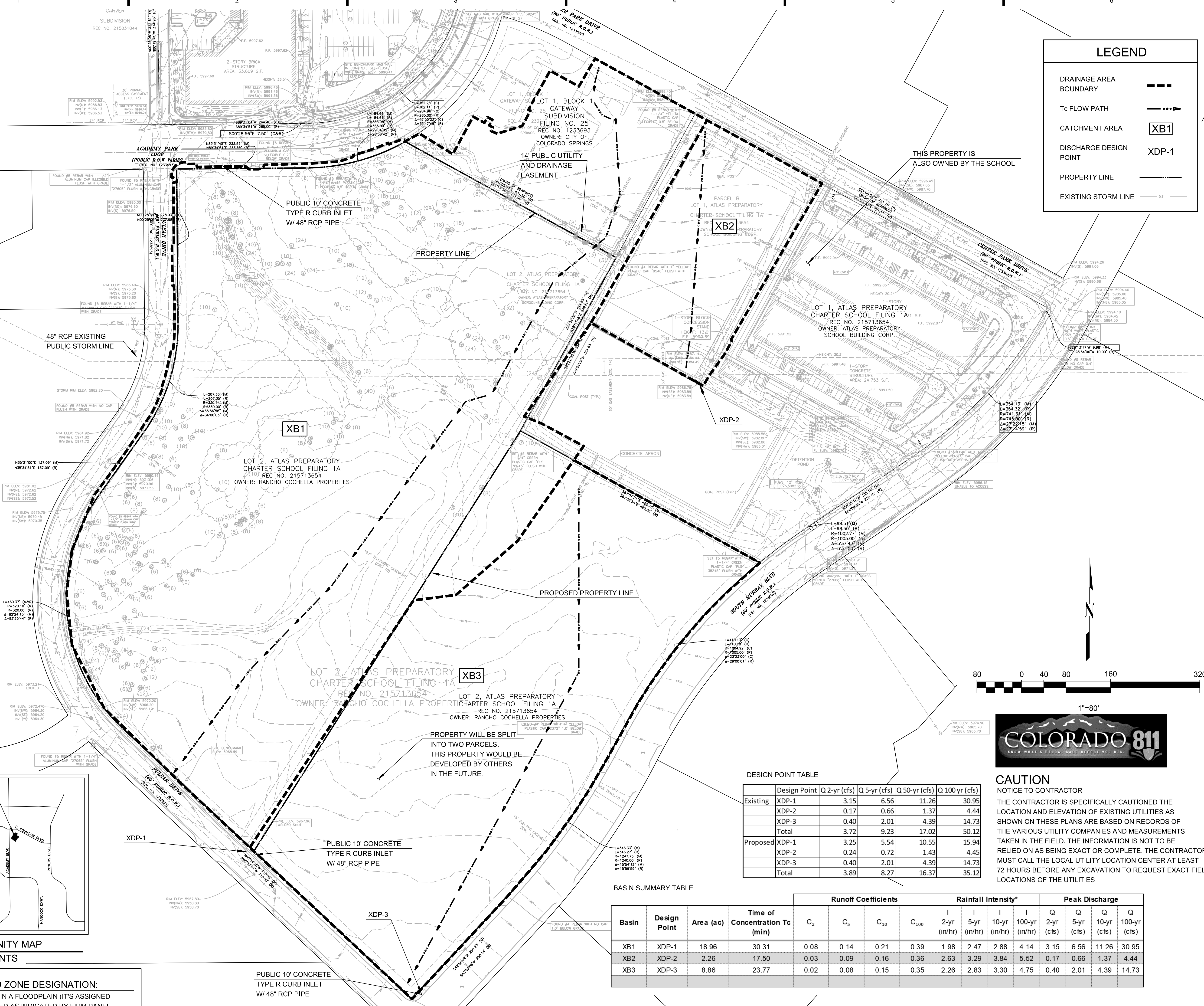
ISSUE:

DATE:	05.02.2019
PROJECT NO.:	1975009
CAD DWG FILE:	
DRAWN BY:	MML
CHECKED BY:	DWB

SHEET TITLE
PRELIMINARY EXISTING
DRAINAGE PLAN

LEGEND

- DRAINAGE AREA BOUNDARY
- Tc FLOW PATH
- CATCHMENT AREA XB1
- DISCHARGE DESIGN POINT XDP-1
- PROPERTY LINE
- EXISTING STORM LINE

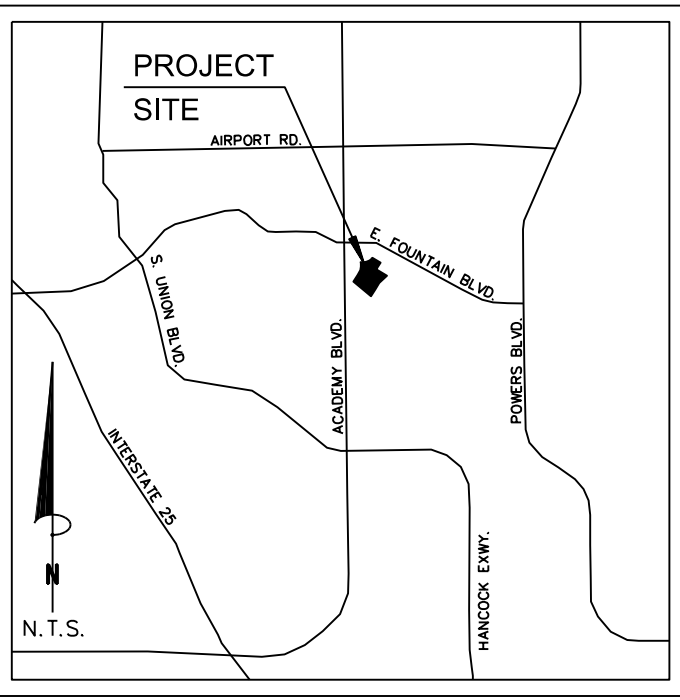


DESIGN POINT TABLE

Design Point	Q 2-yr (cfs)	Q 5-yr (cfs)	Q 50-yr (cfs)	Q 100-yr (cfs)
Existing				
XDP-1	3.15	6.56	11.26	30.95
XDP-2	0.17	0.66	1.37	4.44
XDP-3	0.40	2.01	4.39	14.73
Total	3.72	9.23	17.02	50.12
Proposed				
XDP-1	3.25	5.54	10.55	15.94
XDP-2	0.24	0.72	1.43	4.45
XDP-3	0.40	2.01	4.39	14.73
Total	3.89	8.27	16.37	35.12

BASIN SUMMARY TABLE

Basin	Design Point	Area (ac)	Time of Concentration Tc (min)	Runoff Coefficients				Rainfall Intensity*				Peak Discharge			
				C ₂	C ₅	C ₁₀	C ₁₀₀	I 2-yr (in/hr)	I 5-yr (in/hr)	I 10-yr (in/hr)	I 100-yr (in/hr)	Q 2-yr (cfs)	Q 5-yr (cfs)	Q 10-yr (cfs)	Q 100-yr (cfs)
XB1	XDP-1	18.96	30.31	0.08	0.14	0.21	0.39	1.98	2.47	2.88	4.14	3.15	6.56	11.26	30.95
XB2	XDP-2	2.26	17.50	0.03	0.09	0.16	0.36	2.63	3.29	3.84	5.52	0.17	0.66	1.37	4.44
XB3	XDP-3	8.86	23.77	0.02	0.08	0.15	0.35	2.26	2.83	3.30	4.75	0.40	2.01	4.39	14.73



VICINITY MAP
NTS

FEMA FLOOD ZONE DESIGNATION:
THE SITE IS NOT IN A FLOODPLAIN (IT'S ASSIGNED ZONE X UNSHADED AS INDICATED BY FIRM PANEL NUMBER FM08041C0742G DATED: DECEMBER 7, 2018.)

8:57:06 AM
9/27/2019
\\cfd\server\projects\1975009 Atlas Preparatory Elem School\Drainage\Existing Drainage Sheet.dgn

DESIGN POINT TABLE

	Design Point	Q 2-yr (cfs)	Q 5-yr (cfs)	Q 50-yr (cfs)	Q 100 yr (cfs)
Existing	XDP-1	3.15	6.56	11.26	30.95
	XDP-2	0.17	0.66	1.37	4.44
	XDP-3	0.40	2.01	4.39	14.73
	Total	3.72	9.23	17.02	50.12
Proposed	XDP-1	3.25	5.54	10.55	15.94
	XDP-2	0.24	0.72	1.43	4.45
	XDP-3	0.40	2.01	4.39	14.73
	Total	3.89	8.27	16.37	35.12

CONSULTANT

CIVIL WALLA ENGINEERING
 9800 Pyramid Ct Ste 350,
 Englewood, CO 80112
 P: 303-350-1690

STRUCTURAL WALLA ENGINEERING
 One Park Square
 6501 Americas Pkwy #301,
 Albuquerque, NM 87110
 P: 505-881-3008

M/E/P/P BRIDGERS & PAXTON
 1365 W Garden of the Gods Rd #130,
 Colorado Springs, CO 80907
 P: 719-630-3350

LANDSCAPE GROUNDWORKSTUDIO
 One Park Square
 6501 Americas Pkwy #300,
 Albuquerque, NM 87110
 P: 505-212-9126



Wallace Engineering
 Structural Consultants, Inc.
 Structural and Civil Consultants
 9800 Pyramid Court, Suite 350
 Englewood, Colorado 80112
 303.350.1690, 800.364.5858

THIS DOCUMENT IS PRELIMINARY
 IN NATURE AND IS NOT A FINAL,
 SIGNED AND SEALED DOCUMENT.



ATLAS PREPARATORY SCHOOL

1515 Pulsar Dr
 Colorado Springs, CO 80916

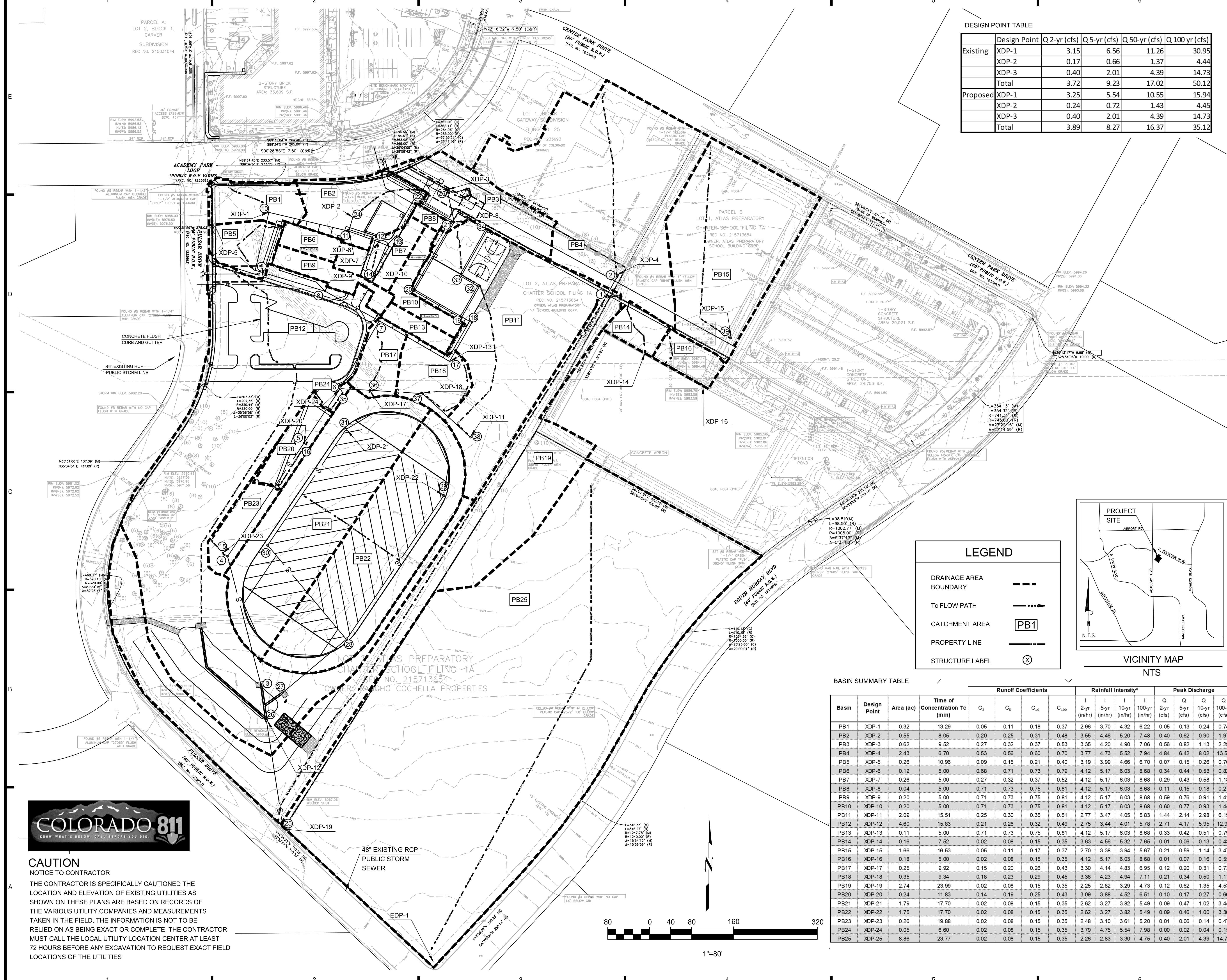
DRAINAGE DESIGN

SEPTEMBER 2019

MARK	DATE	DESCRIPTION

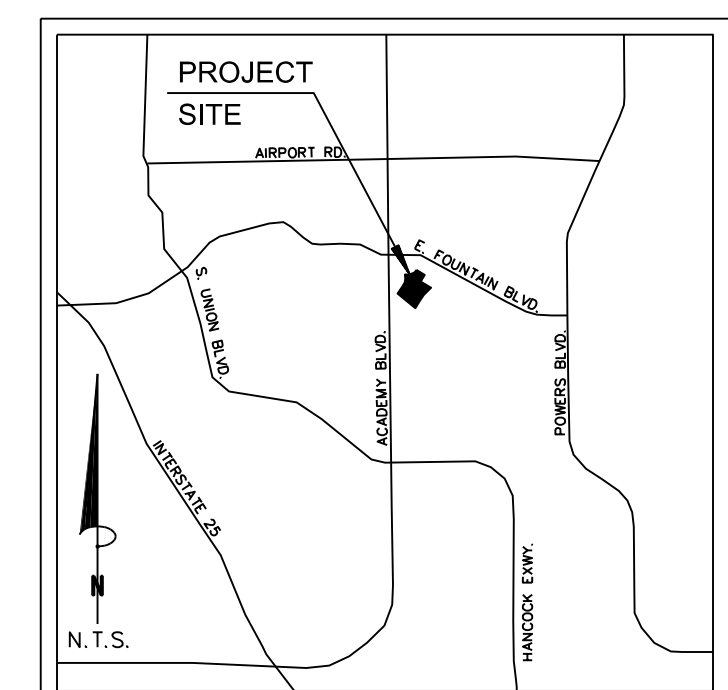
ISSUE:	
DATE:	05.02.2019
PROJECT NO:	1975009
CAD DWG FILE:	
DRAWN BY:	MML
CHECKED BY:	DWB

SHEET TITLE
 PRELIMINARY PROPOSED OVERALL
 DRAINAGE MAP



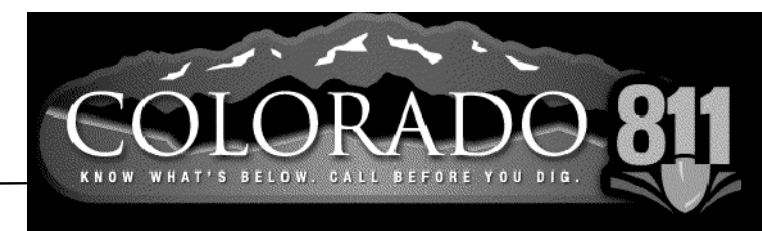
LEGEND

- DRAINAGE AREA BOUNDARY: - - - - -
- Tc FLOW PATH: - - - - ->
- CATCHMENT AREA: [PB1]
- PROPERTY LINE: ————
- STRUCTURE LABEL: (X)



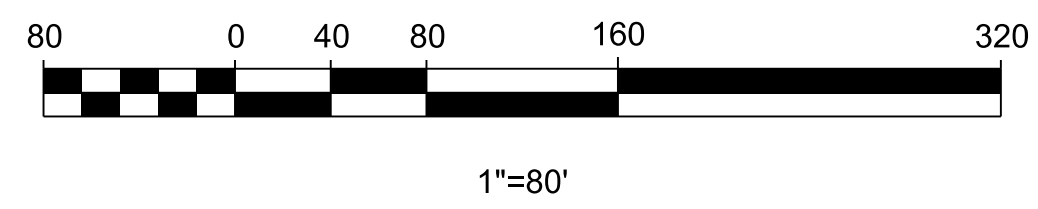
BASIN SUMMARY TABLE

Basin	Design Point	Area (ac)	Time of Concentration Tc (min)	Runoff Coefficients				Rainfall Intensity*				Peak Discharge			
				C ₂	C ₅	C ₁₀	C ₁₀₀	2-yr (in/hr)	5-yr (in/hr)	10-yr (in/hr)	100-yr (in/hr)	2-yr (cfs)	5-yr (cfs)	10-yr (cfs)	100-yr (cfs)
PB1	XDP-1	0.32	13.29	0.05	0.11	0.18	0.37	2.96	3.70	4.32	6.22	0.05	0.13	0.24	0.74
PB2	XDP-2	0.55	8.05	0.20	0.25	0.31	0.48	3.55	4.46	5.20	7.48	0.40	0.62	0.90	1.97
PB3	XDP-3	0.62	9.52	0.27	0.32	0.37	0.53	3.35	4.20	4.90	7.06	0.56	0.82	1.13	2.29
PB4	XDP-4	2.43	6.70	0.53	0.56	0.60	0.70	3.77	4.73	5.52	7.94	4.84	6.42	8.02	13.56
PB5	XDP-5	0.26	10.96	0.09	0.15	0.21	0.40	3.19	3.99	4.66	6.70	0.07	0.15	0.26	0.70
PB6	XDP-6	0.12	5.00	0.68	0.71	0.73	0.79	4.12	5.17	6.03	8.68	0.34	0.44	0.53	0.82
PB7	XDP-7	0.26	5.00	0.27	0.32	0.37	0.52	4.12	5.17	6.03	8.68	0.29	0.43	0.58	1.18
PB8	XDP-8	0.04	5.00	0.71	0.73	0.75	0.81	4.12	5.17	6.03	8.68	0.11	0.15	0.18	0.27
PB9	XDP-9	0.20	5.00	0.71	0.73	0.75	0.81	4.12	5.17	6.03	8.68	0.59	0.76	0.91	1.41
PB10	XDP-10	0.20	5.00	0.71	0.73	0.75	0.81	4.12	5.17	6.03	8.68	0.60	0.77	0.93	1.44
PB11	XDP-11	2.09	15.51	0.25	0.30	0.35	0.51	2.77	3.47	4.05	5.83	1.44	2.14	2.98	6.19
PB12	XDP-12	4.60	15.83	0.21	0.26	0.32	0.49	2.75	3.44	4.01	5.78	2.71	4.17	5.95	12.93
PB13	XDP-13	0.11	5.00	0.71	0.73	0.75	0.81	4.12	5.17	6.03	8.68	0.33	0.42	0.51	0.79
PB14	XDP-14	0.16	7.52	0.02	0.08	0.15	0.35	3.63	4.56	5.32	7.65	0.01	0.06	0.13	0.43
PB15	XDP-15	1.66	16.53	0.05	0.11	0.17	0.37	2.70	3.38	3.94	5.67	0.21	0.59	1.14	3.47
PB16	XDP-16	0.18	5.00	0.02	0.08	0.15	0.35	4.12	5.17	6.03	8.68	0.01	0.07	0.16	0.55
PB17	XDP-17	0.25	9.92	0.15	0.20	0.26	0.43	3.30	4.14	4.83	6.95	0.12	0.20	0.31	0.73
PB18	XDP-18	0.35	9.34	0.18	0.23	0.29	0.45	3.38	4.23	4.94	7.11	0.21	0.34	0.50	1.11
PB19	XDP-19	2.74	23.99	0.02	0.08	0.15	0.35	2.25	2.82	3.29	4.73	0.12	0.62	1.35	4.53
PB20	XDP-20	0.24	11.83	0.14	0.19	0.25	0.43	3.09	3.88	4.52	6.51	0.10	0.17	0.27	0.66
PB21	XDP-21	1.79	17.70	0.02	0.08	0.15	0.35	2.62	3.27	3.82	5.49	0.09	0.47	1.02	3.44
PB22	XDP-22	1.75	17.70	0.02	0.08	0.15	0.35	2.62	3.27	3.82	5.49	0.09	0.46	1.00	3.36
PB23	XDP-23	0.26	19.88	0.02	0.08	0.15	0.35	2.48	3.10	3.61	5.20	0.01	0.06	0.14	0.47
PB24	XDP-24	0.05	6.60	0.02	0.08	0.15	0.35	3.79	4.75	5.54	7.98	0.00	0.02	0.04	0.15
PB25	XDP-25	8.86	23.77	0.02	0.08	0.15	0.35	2.26	2.83	3.30	4.75	0.40	2.01	4.39	14.73



CAUTION
 NOTICE TO CONTRACTOR

THE CONTRACTOR IS SPECIFICALLY CAUTIONED THE LOCATION AND ELEVATION OF EXISTING UTILITIES AS SHOWN ON THESE PLANS ARE BASED ON RECORDS OF THE VARIOUS UTILITY COMPANIES AND MEASUREMENTS TAKEN IN THE FIELD. THE INFORMATION IS NOT TO BE RELIED ON AS BEING EXACT OR COMPLETE. THE CONTRACTOR MUST CALL THE LOCAL UTILITY LOCATION CENTER AT LEAST 72 HOURS BEFORE ANY EXCAVATION TO REQUEST EXACT FIELD LOCATIONS OF THE UTILITIES

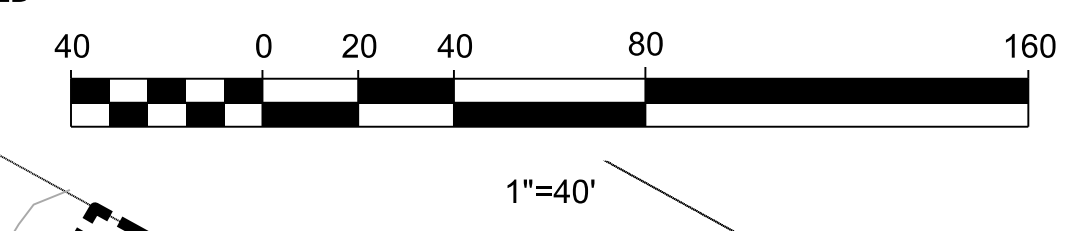


BASIN SUMMARY TABLE

Basin	Design Point	Area (ac)	Time of Concentration Tc (min)	Runoff Coefficients				Rainfall Intensity*				Peak Discharge			
				C ₂	C _s	C ₁₀	C ₁₀₀	2-yr (in/hr)	5-yr (in/hr)	10-yr (in/hr)	100-yr (in/hr)	Q 2-yr (cfs)	Q 5-yr (cfs)	Q 10-yr (cfs)	Q 100-yr (cfs)
PB1	XDP-1	0.32	13.29	0.05	0.11	0.18	0.37	2.96	3.70	4.32	6.22	0.05	0.13	0.24	0.74
PB2	XDP-2	0.55	8.05	0.20	0.25	0.31	0.48	3.55	4.46	5.20	7.48	0.40	0.62	0.90	1.97
PB3	XDP-3	0.62	9.52	0.27	0.32	0.37	0.53	3.35	4.20	4.90	7.06	0.56	0.82	1.13	2.29
PB4	XDP-4	2.43	6.70	0.53	0.56	0.60	0.70	3.77	4.73	5.52	7.94	4.84	6.42	8.02	13.56
PB5	XDP-5	0.26	10.96	0.09	0.15	0.21	0.40	3.19	3.99	4.66	6.70	0.07	0.15	0.26	0.70
PB6	XDP-6	0.12	5.00	0.68	0.71	0.73	0.79	4.12	5.17	6.03	8.68	0.34	0.44	0.53	0.82
PB7	XDP-7	0.26	5.00	0.27	0.32	0.37	0.52	4.12	5.17	6.03	8.68	0.29	0.43	0.58	1.18
PB8	XDP-8	0.04	5.00	0.71	0.73	0.75	0.81	4.12	5.17	6.03	8.68	0.11	0.15	0.18	0.27
PB9	XDP-9	0.20	5.00	0.71	0.73	0.75	0.81	4.12	5.17	6.03	8.68	0.59	0.76	0.91	1.41
PB10	XDP-10	0.20	5.00	0.71	0.73	0.75	0.81	4.12	5.17	6.03	8.68	0.60	0.77	0.93	1.44
PB11	XDP-11	2.09	15.51	0.25	0.30	0.35	0.51	2.77	3.47	4.05	5.83	1.44	2.14	2.98	6.19
PB12	XDP-12	4.60	15.83	0.21	0.26	0.32	0.49	2.75	3.44	4.01	5.78	2.71	4.17	5.95	12.93
PB13	XDP-13	0.11	5.00	0.71	0.73	0.75	0.81	4.12	5.17	6.03	8.68	0.33	0.42	0.51	0.79
PB14	XDP-14	0.16	7.52	0.02	0.08	0.15	0.35	3.63	4.56	5.32	7.65	0.01	0.06	0.13	0.43
PB15	XDP-15	1.66	16.53	0.05	0.11	0.17	0.37	2.70	3.38	3.94	5.67	0.21	0.59	1.14	3.47
PB16	XDP-16	0.18	5.00	0.02	0.08	0.15	0.35	4.12	5.17	6.03	8.68	0.01	0.07	0.16	0.55
PB17	XDP-17	0.25	9.92	0.15	0.20	0.26	0.43	3.30	4.14	4.83	6.95	0.12	0.20	0.31	0.73
PB18	XDP-18	0.35	9.34	0.18	0.23	0.29	0.45	3.38	4.23	4.94	7.11	0.21	0.34	0.50	1.11
PB19	XDP-19	2.74	23.99	0.02	0.08	0.15	0.35	2.25	2.82	3.29	4.73	0.12	0.62	1.35	4.53
PB20	XDP-20	0.24	11.83	0.14	0.19	0.25	0.43	3.09	3.88	4.52	6.51	0.10	0.17	0.27	0.66
PB21	XDP-21	1.79	17.70	0.02	0.08	0.15	0.35	2.62	3.27	3.82	5.49	0.09	0.47	1.02	3.44
PB22	XDP-22	1.75	17.70	0.02	0.08	0.15	0.35	2.62	3.27	3.82	5.49	0.09	0.46	1.00	3.36
PB23	XDP-23	0.26	19.88	0.02	0.08	0.15	0.35	2.48	3.10	3.61	5.20	0.01	0.06	0.14	0.47
PB24	XDP-24	0.05	6.60	0.02	0.08	0.15	0.35	3.79	4.75	5.54	7.98	0.00	0.02	0.04	0.15
PB25	XDP-25	8.86	23.77	0.02	0.08	0.15	0.35	2.26	2.83	3.30	4.75	0.40	2.01	4.39	14.73



CAUTION
NOTICE TO CONTRACTOR
THE CONTRACTOR IS SPECIFICALLY CAUTIONED THE LOCATION AND ELEVATION OF EXISTING UTILITIES AS SHOWN ON THESE PLANS ARE BASED ON RECORDS OF THE VARIOUS UTILITY COMPANIES AND MEASUREMENTS TAKEN IN THE FIELD. THE INFORMATION IS NOT TO BE RELIED ON AS BEING EXACT OR COMPLETE. THE CONTRACTOR MUST CALL THE LOCAL UTILITY LOCATION CENTER AT LEAST 72 HOURS BEFORE ANY EXCAVATION TO REQUEST EXACT FIELD LOCATIONS OF THE UTILITIES



fbt architects
MAIL: 415 N. Tejon St. Colorado Springs, CO 80903
PH: 719-509-9440 FAX: 719-509-9440 WEB: www.fbtarch.com

CONSULTANT

CIVIL ENGINEERING
WALLA ENGINEERING
9800 Pyramid Ct Ste 350, Englewood, CO 80112
P: 303-350-1690

STRUCTURAL WALLA ENGINEERING
One Park Square, 6501 Americas Pkwy #301, Albuquerque, NM 87110
P: 505-881-3008

M/E/P/FP BRIDGERS & PAXTON
1365 W Garden of the Gods Rd #130, Colorado Springs, CO 80907
P: 719-630-3350

LANDSCAPE GROUNDWORKSTUDIO
One Park Square, 6501 Americas Pkwy #300, Albuquerque, NM 87110
P: 505-212-9126

wallace
Wallace Engineering
Structural Consultants, Inc.
Structural and Civil Consultants
9800 Pyramid Court, Suite 350
Englewood, Colorado 80112
303.350.1690, 800.364.5858

THIS DOCUMENT IS PRELIMINARY IN NATURE AND IS NOT A FINAL, SIGNED AND SEALED DOCUMENT.

ATLAS
PREPARATORY SCHOOL

ATLAS PREPARATORY SCHOOL
1515 Pulsar Dr
Colorado Springs, CO 80916
DRAINAGE DESIGN
SEPTEMBER 2019

MARK	DATE	DESCRIPTION

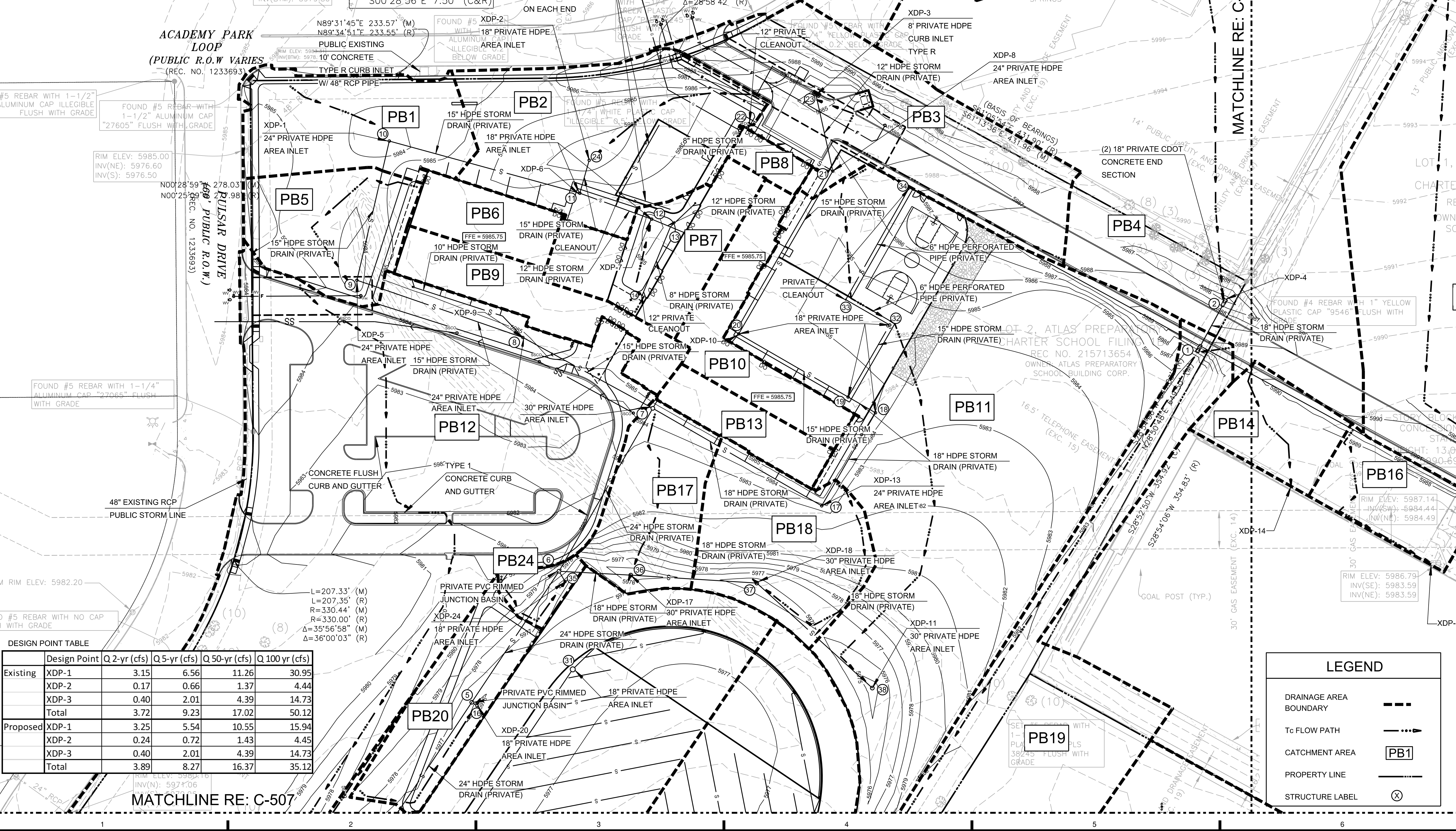
ISSUE:

DATE:	05.02.2019
PROJECT NO:	1975009
CAD DWG FILE:	
DRAWN BY:	MML
CHECKED BY:	DWB

SHEET TITLE

PRELIMINARY PROPOSED
DRAINAGE MAP (NORTH)

C-506



DESIGN POINT TABLE

Design Point	Q 2-yr (cfs)	Q 5-yr (cfs)	Q 50-yr (cfs)	Q 100-yr (cfs)
Existing				
XDP-1	3.15	6.56	11.26	30.95
XDP-2	0.17	0.66	1.37	4.44
XDP-3	0.40	2.01	4.39	14.73
Total	3.72	9.23	17.02	50.12
Proposed				
XDP-1	3.25	5.54	10.55	15.94
XDP-2	0.24	0.72	1.43	4.45
XDP-3	0.40	2.01	4.39	14.73
Total	3.89	8.27	16.37	35.12

LEGEND

- DRAINAGE AREA BOUNDARY: - - - - -
- Tc FLOW PATH: - - - - -
- CATCHMENT AREA: [PB1]
- PROPERTY LINE: - - - - -
- STRUCTURE LABEL: (X)

11/15/2019 9:33:46 AM \\c:\server\projects\1975009 Atlas Preparatory Elem School\Drainage\Proposed Drainage Sheet 2.dgn

CONSULTANT

CIVIL WALLA ENGINEERING
 9800 Pyramid Ct Ste 350, Englewood, CO 80112
 P: 303-350-1690

STRUCTURAL WALLA ENGINEERING
 One Park Square, 6501 Americas Pkwy #301, Albuquerque, NM 87110
 P: 505-881-3008

M/E/P/P BRIDGERS & PAXTON
 1365 W Garden of the Gods Rd #130, Colorado Springs, CO 80907
 P: 719-630-3350

LANDSCAPE GROUNDWORKSTUDIO
 One Park Square, 6501 Americas Pkwy #300, Albuquerque, NM 87110
 P: 505-212-9126

wallace
 Wallace Engineering
 Structural Consultants, Inc.
 Structural and Civil Consultants
 9800 Pyramid Court, Suite 350
 Englewood, Colorado 80112
 303.350.1690, 800.364.5858

THIS DOCUMENT IS PRELIMINARY
 IN NATURE AND IS NOT A FINAL,
 SIGNED AND SEALED DOCUMENT.



ATLAS PREPARATORY SCHOOL
 1515 Pulsar Dr
 Colorado Springs, CO 80916

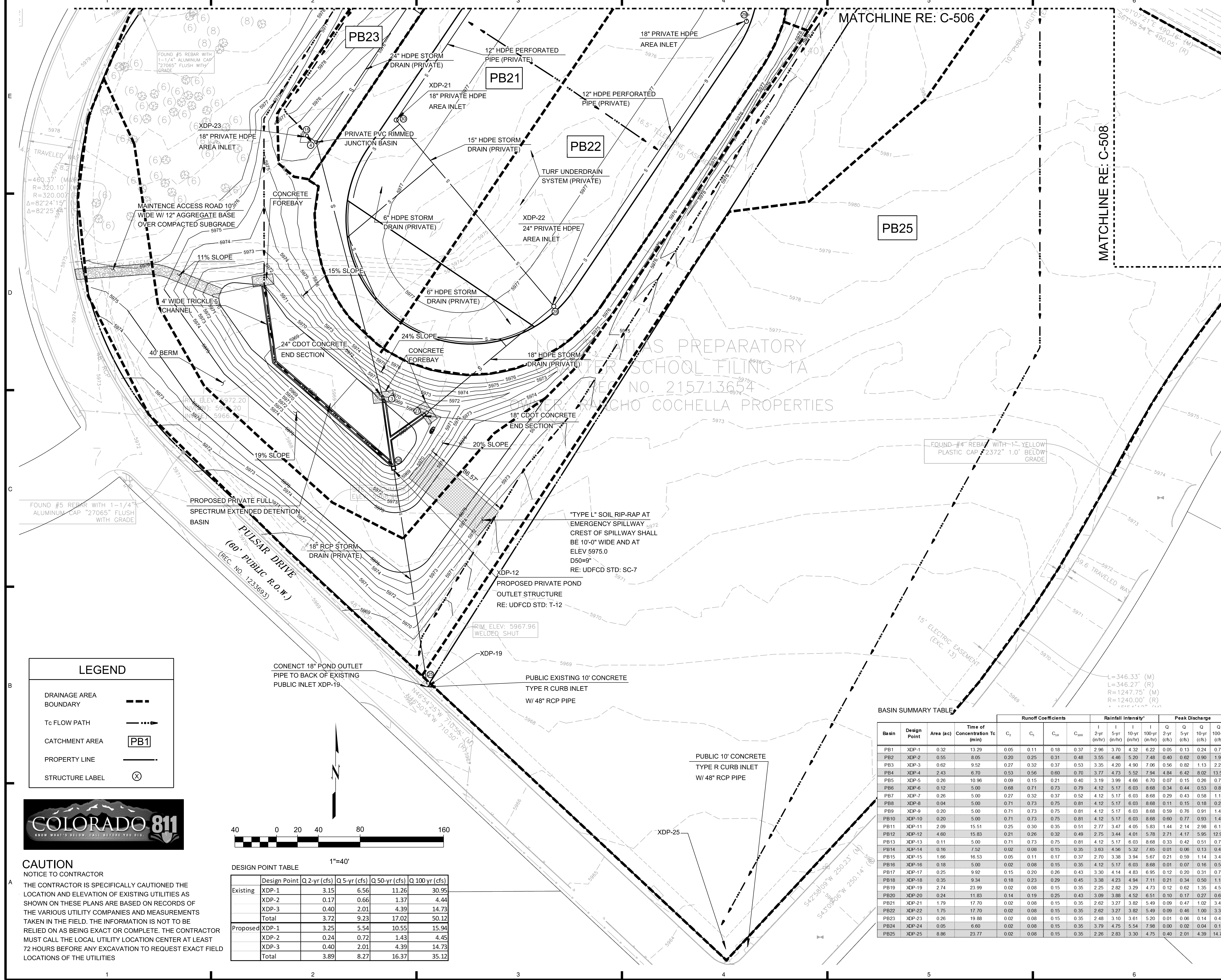
DRAINAGE DESIGN
 SEPTEMBER 2019

MARK	DATE	DESCRIPTION

ISSUE: 05.02.2019
 DATE: 05.02.2019
 PROJECT NO: 1975009
 CAD DWG FILE:
 DRAWN BY: MML
 CHECKED BY: DWB

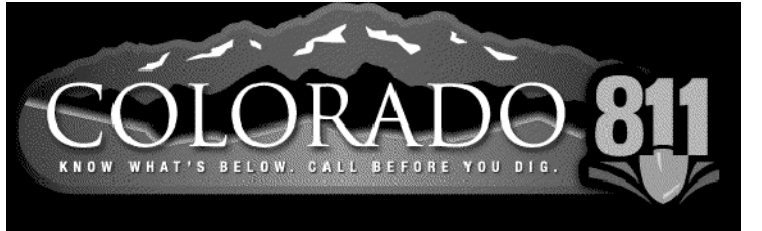
SHEET TITLE
 PRELIMINARY PROPOSED
 DRAINAGE MAP (SOUTH)

C-507



LEGEND

- DRAINAGE AREA BOUNDARY: ---
- To FLOW PATH: ->
- CATCHMENT AREA: [PB1]
- PROPERTY LINE: - - -
- STRUCTURE LABEL: ⊗



CAUTION
 NOTICE TO CONTRACTOR

THE CONTRACTOR IS SPECIFICALLY CAUTIONED THE LOCATION AND ELEVATION OF EXISTING UTILITIES AS SHOWN ON THESE PLANS ARE BASED ON RECORDS OF THE VARIOUS UTILITY COMPANIES AND MEASUREMENTS TAKEN IN THE FIELD. THE INFORMATION IS NOT TO BE RELIED ON AS BEING EXACT OR COMPLETE. THE CONTRACTOR MUST CALL THE LOCAL UTILITY LOCATION CENTER AT LEAST 72 HOURS BEFORE ANY EXCAVATION TO REQUEST EXACT FIELD LOCATIONS OF THE UTILITIES

DESIGN POINT TABLE
 1"=40'

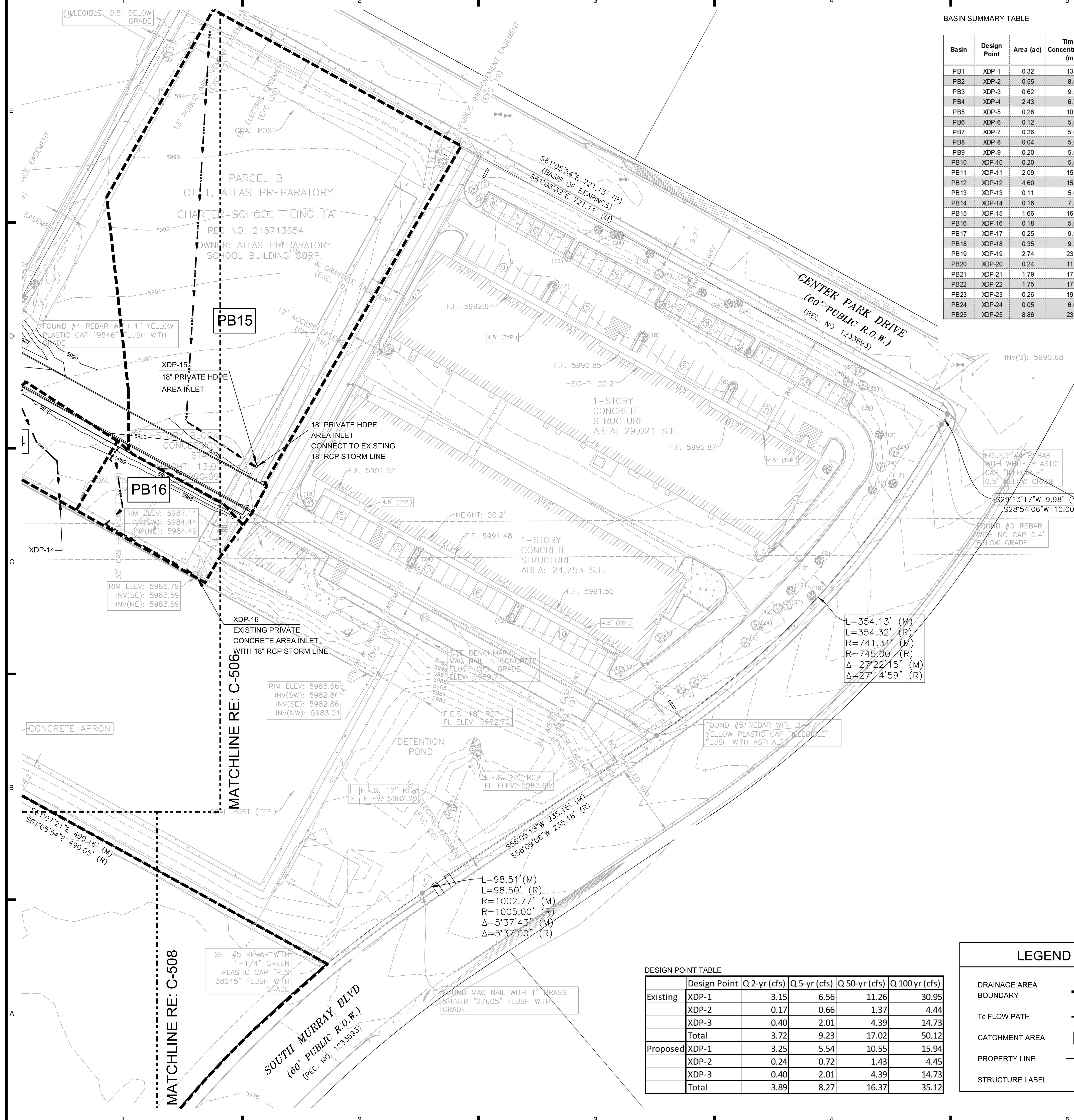
Design Point	Q 2-yr (cfs)	Q 5-yr (cfs)	Q 50-yr (cfs)	Q 100-yr (cfs)
Existing XDP-1	3.15	6.56	11.26	30.95
XDP-2	0.17	0.66	1.37	4.44
XDP-3	0.40	2.01	4.39	14.73
Total	3.72	9.23	17.02	50.12
Proposed XDP-1	3.25	5.54	10.55	15.94
XDP-2	0.24	0.72	1.43	4.45
XDP-3	0.40	2.01	4.39	14.73
Total	3.89	8.27	16.37	35.12

BASIN SUMMARY TABLE

Basin	Design Point	Area (ac)	Time of Concentration Tc (min)	Runoff Coefficients				Rainfall Intensity				Peak Discharge			
				C ₁	C ₂	C ₁₀	C ₁₀₀	2-yr (in/hr)	5-yr (in/hr)	10-yr (in/hr)	100-yr (in/hr)	Q 2-yr (cfs)	Q 5-yr (cfs)	Q 10-yr (cfs)	Q 100-yr (cfs)
PB1	XDP-1	0.32	13.29	0.05	0.11	0.18	0.37	2.96	3.70	4.32	6.22	0.05	0.13	0.24	0.74
PB2	XDP-2	0.55	8.05	0.20	0.25	0.31	0.48	3.55	4.46	5.20	7.48	0.40	0.62	0.90	1.97
PB3	XDP-3	0.62	9.52	0.27	0.32	0.37	0.53	3.35	4.20	4.90	7.06	0.56	0.82	1.13	2.29
PB4	XDP-4	2.43	6.70	0.53	0.56	0.60	0.70	3.77	4.73	5.52	7.94	4.84	6.42	8.02	13.56
PB5	XDP-5	0.26	10.96	0.09	0.15	0.21	0.40	3.19	3.99	4.66	6.70	0.07	0.15	0.26	0.70
PB6	XDP-6	0.12	5.00	0.68	0.71	0.73	0.79	4.12	5.17	6.03	8.68	0.34	0.44	0.53	0.82
PB7	XDP-7	0.26	5.00	0.27	0.32	0.37	0.52	4.12	5.17	6.03	8.68	0.29	0.43	0.58	1.18
PB8	XDP-8	0.04	5.00	0.71	0.73	0.75	0.81	4.12	5.17	6.03	8.68	0.11	0.15	0.18	0.27
PB9	XDP-9	0.20	5.00	0.71	0.73	0.75	0.81	4.12	5.17	6.03	8.68	0.59	0.76	0.91	1.41
PB10	XDP-10	0.20	5.00	0.71	0.73	0.75	0.81	4.12	5.17	6.03	8.68	0.60	0.77	0.93	1.44
PB11	XDP-11	2.09	15.51	0.25	0.30	0.35	0.51	2.77	3.47	4.05	5.83	1.44	2.14	2.98	6.19
PB12	XDP-12	4.60	15.83	0.21	0.26	0.32	0.49	2.75	3.44	4.01	5.78	2.71	4.17	5.95	12.93
PB13	XDP-13	0.11	5.00	0.71	0.73	0.75	0.81	4.12	5.17	6.03	8.68	0.33	0.42	0.51	0.79
PB14	XDP-14	0.16	7.52	0.02	0.08	0.15	0.35	3.63	4.56	5.32	7.65	0.01	0.08	0.13	0.43
PB15	XDP-15	1.66	18.53	0.05	0.11	0.17	0.37	2.70	3.38	3.94	5.67	0.21	0.59	1.14	3.47
PB16	XDP-16	0.18	5.00	0.02	0.08	0.15	0.35	4.12	5.17	6.03	8.68	0.01	0.07	0.16	0.55
PB17	XDP-17	0.25	9.92	0.15	0.20	0.26	0.43	3.30	4.14	4.83	6.95	0.12	0.20	0.31	0.73
PB18	XDP-18	0.35	9.34	0.18	0.23	0.29	0.45	3.38	4.23	4.94	7.11	0.21	0.34	0.50	1.11
PB19	XDP-19	2.74	23.99	0.02	0.08	0.15	0.35	2.25	2.82	3.29	4.73	0.12	0.62	1.35	4.53
PB20	XDP-20	0.24	11.83	0.14	0.19	0.25	0.43	3.09	3.86	4.52	6.51	0.10	0.17	0.27	0.66
PB21	XDP-21	1.79	17.70	0.02	0.08	0.15	0.35	2.62	3.27	3.82	5.49	0.09	0.47	1.02	3.44
PB22	XDP-22	1.75	17.70	0.02	0.08	0.15	0.35	2.62	3.27	3.82	5.49	0.09	0.46	1.00	3.36
PB23	XDP-23	0.26	19.88	0.02	0.08	0.15	0.35	2.48	3.10	3.61	5.20	0.01	0.06	0.14	0.47
PB24	XDP-24	0.05	6.60	0.02	0.08	0.15	0.35	3.79	4.75	5.54	7.98	0.00	0.02	0.04	0.15
PB25	XDP-25	8.86	23.77	0.02	0.08	0.15	0.35	2.26	2.83	3.30	4.75	0.40	2.01	4.39	14.73

12/10/2019 10:13:34 AM \\c:\server\projects\1975009 Atlas Preparatory Elem School\Drainage\Proposed Drainage Sheet 3.dgn

11/14/2019 7:55:44 AM \\c:\server\projects\1975009 Atlas Preparatory Elem School\Drainage\Proposed Drainage Sheet 4.dgn



BASIN SUMMARY TABLE

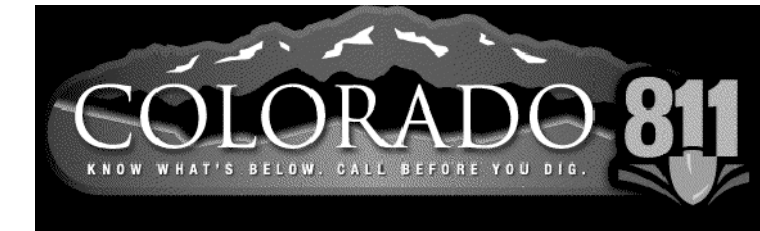
Basin	Design Point	Area (ac)	Time of Concentration Tc (min)	Runoff Coefficients				Rainfall Intensity*				Peak Discharge			
				C ₂	C ₃	C ₁₀	C ₁₀₀	2-yr (in/hr)	5-yr (in/hr)	10-yr (in/hr)	100-yr (in/hr)	Q 2-yr (cfs)	Q 5-yr (cfs)	Q 10-yr (cfs)	Q 100-yr (cfs)
PB1	XDP-1	0.32	13.29	0.05	0.11	0.18	0.37	2.96	3.70	4.32	6.22	0.05	0.13	0.24	0.74
PB2	XDP-2	0.55	8.05	0.20	0.25	0.31	0.48	3.55	4.46	5.20	7.48	0.40	0.62	0.90	1.97
PB3	XDP-3	0.62	9.52	0.27	0.32	0.37	0.53	3.35	4.20	4.90	7.06	0.56	0.82	1.13	2.29
PB4	XDP-4	2.43	6.70	0.53	0.56	0.60	0.70	3.77	4.73	5.52	7.94	4.84	6.42	8.02	13.56
PB5	XDP-5	0.26	10.96	0.09	0.15	0.21	0.40	3.19	3.99	4.66	6.70	0.07	0.15	0.26	0.70
PB6	XDP-6	0.12	5.00	0.68	0.71	0.73	0.79	4.12	5.17	6.03	8.68	0.34	0.44	0.53	0.82
PB7	XDP-7	0.26	5.00	0.27	0.32	0.37	0.52	4.12	5.17	6.03	8.68	0.29	0.43	0.58	1.18
PB8	XDP-8	0.04	5.00	0.71	0.73	0.75	0.81	4.12	5.17	6.03	8.68	0.11	0.15	0.18	0.27
PB9	XDP-9	0.20	5.00	0.71	0.73	0.75	0.81	4.12	5.17	6.03	8.68	0.59	0.76	0.91	1.41
PB10	XDP-10	0.20	5.00	0.71	0.73	0.75	0.81	4.12	5.17	6.03	8.68	0.60	0.77	0.93	1.44
PB11	XDP-11	2.09	15.51	0.25	0.30	0.35	0.51	2.77	3.47	4.05	5.83	1.44	2.14	2.98	6.19
PB12	XDP-12	4.60	15.83	0.21	0.26	0.32	0.49	2.75	3.44	4.01	5.78	2.71	4.17	5.95	12.93
PB13	XDP-13	0.11	5.00	0.71	0.73	0.75	0.81	4.12	5.17	6.03	8.68	0.33	0.42	0.51	0.79
PB14	XDP-14	0.16	7.52	0.02	0.08	0.15	0.35	3.63	4.56	5.32	7.65	0.01	0.06	0.13	0.43
PB15	XDP-15	1.66	16.53	0.05	0.11	0.17	0.37	2.70	3.38	3.94	5.67	0.21	0.59	1.14	3.47
PB16	XDP-16	0.18	5.00	0.02	0.08	0.15	0.35	4.12	5.17	6.03	8.68	0.01	0.07	0.16	0.55
PB17	XDP-17	0.25	9.92	0.15	0.20	0.26	0.43	3.30	4.14	4.83	6.95	0.12	0.20	0.31	0.73
PB18	XDP-18	0.35	9.34	0.18	0.23	0.29	0.45	3.38	4.23	4.94	7.11	0.21	0.34	0.50	1.11
PB19	XDP-19	2.74	23.99	0.02	0.08	0.15	0.35	2.25	2.82	3.29	4.73	0.12	0.62	1.35	4.53
PB20	XDP-20	0.24	11.83	0.14	0.19	0.25	0.43	3.09	3.88	4.52	6.51	0.10	0.17	0.27	0.66
PB21	XDP-21	1.79	17.70	0.02	0.08	0.15	0.35	2.62	3.27	3.82	5.49	0.09	0.47	1.02	3.44
PB22	XDP-22	1.75	17.70	0.02	0.08	0.15	0.35	2.62	3.27	3.82	5.49	0.09	0.46	1.00	3.36
PB23	XDP-23	0.26	19.88	0.02	0.08	0.15	0.35	2.48	3.10	3.61	5.20	0.01	0.06	0.14	0.47
PB24	XDP-24	0.05	6.60	0.02	0.08	0.15	0.35	3.79	4.75	5.54	7.98	0.00	0.02	0.04	0.15
PB25	XDP-25	8.86	23.77	0.02	0.08	0.15	0.35	2.26	2.83	3.30	4.75	0.40	2.01	4.39	14.73

DESIGN POINT TABLE

	Design Point	Q 2-yr (cfs)	Q 5-yr (cfs)	Q 50-yr (cfs)	Q 100 yr (cfs)
Existing	XDP-1	3.15	6.56	11.26	30.95
	XDP-2	0.17	0.66	1.37	4.44
	XDP-3	0.40	2.01	4.39	14.73
	Total	3.72	9.23	17.02	50.12
Proposed	XDP-1	3.25	5.54	10.55	15.94
	XDP-2	0.24	0.72	1.43	4.45
	XDP-3	0.40	2.01	4.39	14.73
	Total	3.89	8.27	16.37	35.12

LEGEND

DRAINAGE AREA BOUNDARY	---
Tc FLOW PATH	→
CATCHMENT AREA	PB1
PROPERTY LINE	—
STRUCTURE LABEL	⊗



CAUTION

NOTICE TO CONTRACTOR
 THE CONTRACTOR IS SPECIFICALLY CAUTIONED THE LOCATION AND ELEVATION OF EXISTING UTILITIES AS SHOWN ON THESE PLANS ARE BASED ON RECORDS OF THE VARIOUS UTILITY COMPANIES AND MEASUREMENTS TAKEN IN THE FIELD. THE INFORMATION IS NOT TO BE RELIED ON AS BEING EXACT OR COMPLETE. THE CONTRACTOR MUST CALL THE LOCAL UTILITY LOCATION CENTER AT LEAST 72 HOURS BEFORE ANY EXCAVATION TO REQUEST EXACT FIELD LOCATIONS OF THE UTILITIES

fbt architects
 MAIL: 415 N. Tejon St. Colorado Springs, CO 80903
 PHONE: 719-309-9440
 FAX: 719-309-9440
 WEB: www.fbtarch.com

CONSULTANT
CIVIL WALLA ENGINEERING
 9800 Pyramid Ct Ste 350, Englewood, CO 80112
 P: 303-350-1690
STRUCTURAL WALLA ENGINEERING
 One Park Square, 6501 Americas Pkwy #301, Albuquerque, NM 87110
 P: 505-881-3008
M/E/P/F BRIDGERS & PAXTON
 1365 W Garden of the Gods Rd #130, Colorado Springs, CO 80907
 P: 719-630-3350
LANDSCAPE GROUNDWORKSTUDIO
 One Park Square, 6501 Americas Pkwy #300, Albuquerque, NM 87110
 P: 505-212-9126

wallace
 Wallace Engineering
 Structural Consultants, Inc.
 Structural and Civil Consultants
 9800 Pyramid Court, Suite 350
 Englewood, Colorado 80112
 303.350.1690, 800.364.5858

THIS DOCUMENT IS PRELIMINARY
 IN NATURE AND IS NOT A FINAL,
 SIGNED AND SEALED DOCUMENT.

ATLAS
 PREPARATORY SCHOOL

ATLAS PREPARATORY SCHOOL
 1515 Pulsar Dr
 Colorado Springs, CO 80916
DRAINAGE DESIGN
 SEPTEMBER 2019

MARK	DATE	DESCRIPTION

ISSUE:	
DATE:	05.02.2019
PROJECT NO:	1975009
CAD DWG FILE:	
DRAWN BY:	MML
CHECKED BY:	DWB

SHEET TITLE
 PRELIMINARY PROPOSED
 DRAINAGE MAP (EAST)

C-508