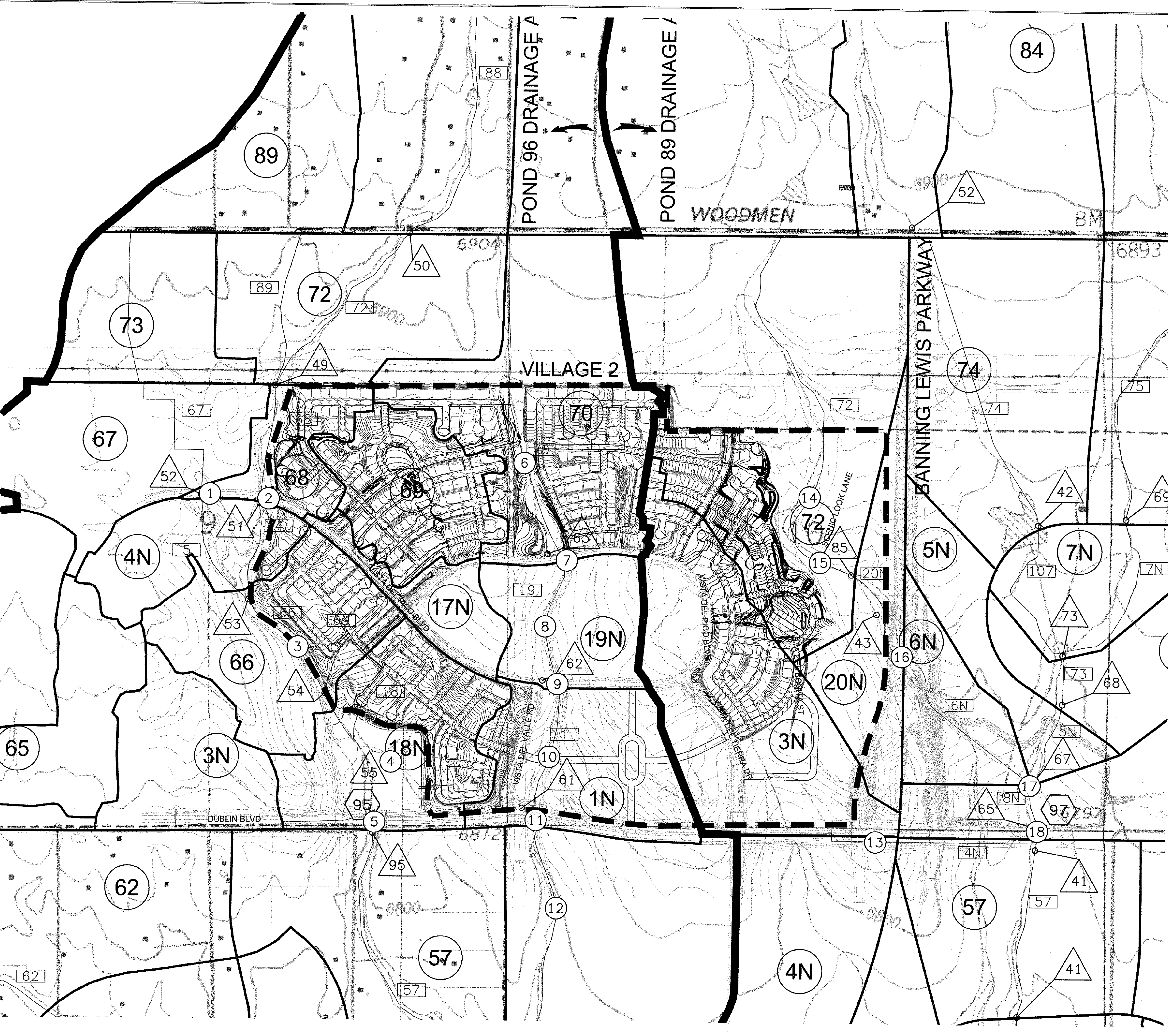


DATE: 7/24/07 TIME: 1:20:37 PM DRAWING NAME: P:\P\14\142.DWG
 SERVER: D:\1 DESIGNER: JMH PROJ. MGR: RLM PLOTTED BY: MEDEN
 PATH: N:\CS06062\CADD\CIVIL\142.DWG

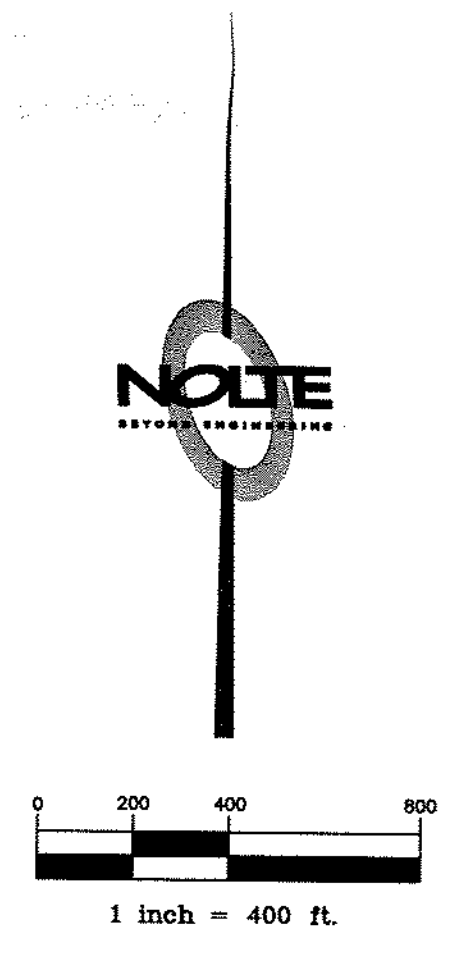


PROPOSED VILLAGE 2 AND SURROUNDING INFRASTRUCTURE

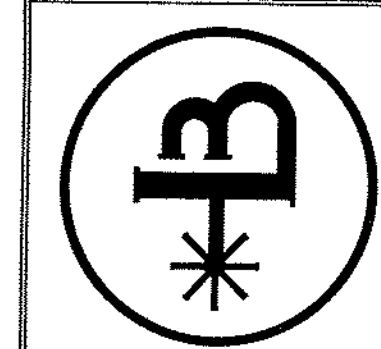
ORIGINAL PHASE 1 & 2 MDDP PROPOSED STRUCTURE SUMMARY

- 1 VISTA DEL PICO BLVD STA 81+98 72"x135" RCP CULVERT (FILING 2)
- 2 VISTA DEL PICO BLVD STA 87+66 6"x6"x96" CONCRETE BOX CULVERT (FILING 2)
- 3 CHANNEL 66 15-50' UNDISTURBED CHANNEL BOTTOM, 4:1 RIPRAPPED SIDESLOPES (FILING 2)
- 4 DETENTION POND 95 69.6 AC-FT (FILING 2)
- 5 DUBLIN BLVD STA 576+79 6"x5"x150" CONCRETE BOX CULVERT (FILING 2)
- 6 FUTURE CHANNEL 70
- 7 VISTA DEL PICO BLVD STA 152+88 60"x143" RCP CULVERT (FILING 2)
- 8 CHANNEL 19N 8' FLAT-BOTTOM, 4:1 RIPRAPPED SIDESLOPES (FILING 2)
- 9 VISTA DEL PICO BLVD STA 118+94 60"x144" RCP CULVERT (FILING 2)
- 10 CHANNEL 1N 8' FLAT-BOTTOM, 4:1 RIPRAPPED SIDESLOPES (FILING 2)
- 11 DUBLIN BLVD STA 590+80 66"x184" RCP CULVERT (FILING 2)
- 12 CHANNEL 2N 10' FLAT-BOTTOM, 4:1 RIPRAPPED SIDESLOPES (FILING 2)
- 13 DUBLIN BLVD STORM SEWER 66"x1363" RCP (FILING 1)
- 14 FUTURE CHANNEL 72
- 15 SCENIC LOOK LANE FUTURE STRUCTURE
- 16 BANNING LEWIS PARKWAY STA 2822+01 14"x6"x317" CONCRETE BOX CULVERT (FILING 4)
- 17 DETENTION BASIN 97 146.0 AC-FT (FILING 4)
- 18 DUBLIN BLVD STA 635+31 TWIN 8"x8"x210" CONCRETE BOX CULVERT (FILING 4)

39 DESIGN POINT ID



BANNING LEWIS RANCH
 VILLAGE 2 MDDP
 DRAINAGE BASIN MAP



NOLTE
 BEYOND ENGINEERING
 5225 N. ACADEMY BLVD., SUITE 304
 COLORADO SPRINGS, CO 80918
 719.268.8500 TEL. 719.268.9200 FAX
 WWW.NOLTE.COM

PRELIMINARY
 NOT FOR CONSTRUCTION

SHEET NUMBER
 2
 OF 3 SHEETS
 JOB NUMBER
 CSB0602

PREPARED FOR: BANNING LEWIS RANCH DATE SUBMITTED: MAY 2007

REVISIONS
 NO. BY DATE
 1 JMH 04/25/2007
 2 JMH 05/17/2007
 CHANGES PER CITY REVIEW COMMENTS

The engineer preparing these plans will not be responsible for, or liable for, unauthorized changes to or uses of these plans. Changes to the plans must be in writing and must be approved by the Engineer of these plans.