

N:\jobs\1859.00\drawings\dp\185900 FDM.dwg, PR DRAINAGE MAP, 12/19/2018 10:48:01 AM

PROPOSED CONDITIONS

BASIN	ACRES	Q5 CFS	Q100 CFS
A1	2.13	3.6	8.7
A2	0.05	0.2	0.4
A3	0.05	0.4	0.4
A4	0.17	0.6	1.2
A5	0.11	0.4	0.8
A6	0.06	0.2	0.4
A7	0.60	0.3	1.9
OS-B1	0.07	0.0	0.2
OS-B2	0.14	0.1	0.4
OS-B3	0.36	0.2	1.1
B1	1.14	2.7	5.8
B2	0.46	1.4	2.8
B3	0.13	0.5	1.0
B4	0.78	2.5	4.8
B5	0.47	0.2	1.5
B6	0.06	0.2	0.4
B7	0.13	0.5	0.9

PROPOSED CONDITIONS

BASIN	ACRES	Q5 CFS	Q100 CFS
B8	0.10	0.4	0.7
B9	0.07	0.2	0.4
B10	0.07	0.5	0.9
B11	0.05	0.2	0.4
B12	0.05	0.2	0.4
B13	0.11	0.4	0.8
B14	0.12	0.5	0.8
B15	0.05	0.2	0.4
B16	0.04	0.2	0.3
B17	0.11	0.4	0.8
B18	0.11	0.4	0.8
B19	0.07	0.3	0.5
B20	0.07	0.3	0.5
B21	0.53	0.2	1.4
OS-C	0.06	0.0	0.2
C1	1.29	3.2	6.5
C2	0.45	1.3	2.6

PROPOSED CONDITIONS

BASIN	ACRES	Q5 CFS	Q100 CFS
C3	0.07	0.3	0.5
C4	0.05	0.2	0.4
C5	0.06	0.2	0.4
C6	0.11	0.4	0.8
C7	0.11	0.4	0.8
C8	0.06	0.2	0.4
C9	0.06	0.2	0.4
C10	0.44	0.2	1.4
D	1.06	3.1	6.6

BARNES & MEDICAL VIEW APARTMENTS

COLORADO SPRINGS, CO

PROPOSED DRAINAGE MAP

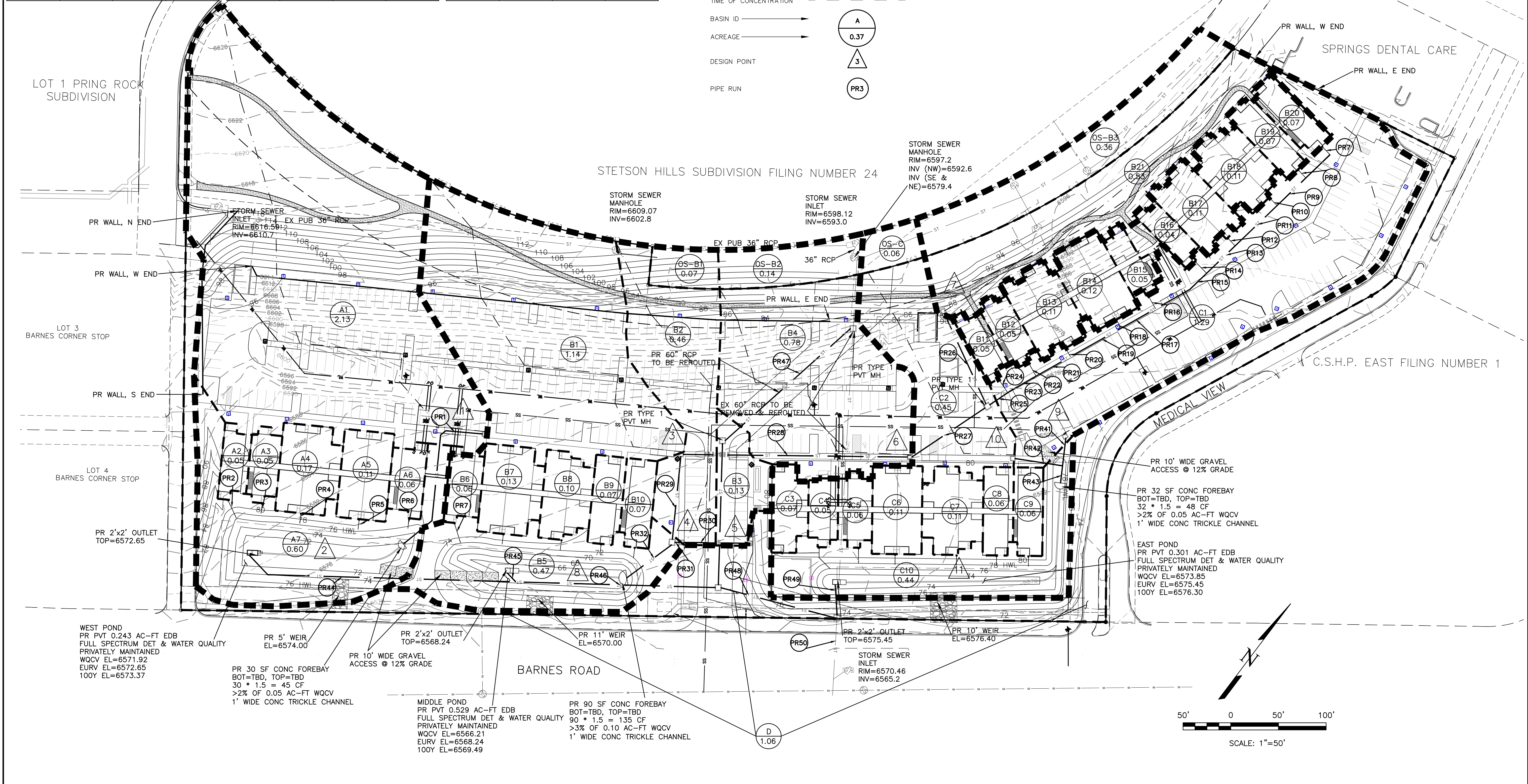
DECEMBER 2018

DESIGN POINT SUMMARY

DP	CONTRIBUTING BASINS	AREA AC.	Q5 CFS	Q100 CFS	INLET SIZE/TYPE	OWNER
1	A1	0.22	3.6	8.7	8' D10-R SUMP	PRIVATE
2	A1-A7	3.17	5.1	12.5	WEST POND	PRIVATE
3	B1	1.14	2.5	5.8	8' D10-R SUMP	PRIVATE
4	B2 & OS-B1	0.53	1.4	3.0	4' D10-R SUMP	PRIVATE
5	B3 & OS-B3	0.27	0.6	1.4	4' D10-R SUMP	PRIVATE
6	B4	0.78	2.5	12.6	12' D10-R SUMP	PRIVATE
7	B21 & OS-B3	0.89	0.4	2.4	TYPE "C" INLET	PRIVATE
8	B1-B21	4.72	10.7	22.9	MIDDLE POND	PRIVATE
9	C1	1.29	3.2	6.5	8' D10-R SUMP	PRIVATE
10	C2 & OS-C	0.45	1.3	2.8	4' D10-R SUMP	PRIVATE
11	C1-C10	2.70	5.9	13.0	EAST POND	PRIVATE

LEGEND

- 10' EX CONTOUR: - - - - - 6810
- 2' EX CONTOUR: - - - - - 6802
- 10' PROP. CONTOUR: ———— 6810
- 2' PROP. CONTOUR: ———— 6802
- PROPOSED FLOW DIRECTION: —————>
- BASIN BOUNDARY: - - - - -
- TIME OF CONCENTRATION: (A) 0.37, (3) 3, (PR3) PR3
- BASIN ID: (A) 0.37
- ACREAGE: (3) 3
- DESIGN POINT: (3) 3
- PIPE RUN: (PR3) PR3



REVISIONS

NO.	DESCRIPTION	DATE

UNTL SUCH TIME AS THESE DRAWINGS ARE APPROVED BY THE ENGINEERING AGENCIES, THE REVIEWING AGENCIES, THE TERRA NOVA ENGINEERING, INC. APPROVES THEIR USE ONLY FOR THE PROJECT AND FOR THE MOST RECENT WRITTEN AUTHORIZATION.

PREPARED FOR:
PAVILION CONSTRUCTION
 ATTN: CASEY CAMERON
 16037 SW BOONESFERRY RD
 TIGARD, OR 97224
 503-332-6562

Terra Nova
 Engineering, Inc.
 721 S. 2900 STREET
 COLORADO SPRINGS, CO 80904
 OFFICE: 719-635-6422
 FAX: 719-635-6426
 www.tneshinc.com

BARNES & MEDICAL VIEW APARTMENTS

PROPOSED DRAINAGE MAP

DESIGNED BY QNA
 DRAWN BY QNA
 CHECKED BY
 H-SCALE AS NOTED
 V-SCALE N/A
 JOB NO. 1859.00
 DATE ISSUED 12/18/18
 SHEET NO. 2 OF 4