

N:\jobs\1859.00\drawings\dp\185900 FDM.dwg, PR ST SEWER, 12/19/2018 10:48:11 AM

PROPOSED CONDITIONS

BASIN	ACRES	Q5 CFS	Q100 CFS
A1	2.13	3.6	8.7
A2	0.05	0.2	0.4
A3	0.05	0.4	0.4
A4	0.17	0.6	1.2
A5	0.11	0.4	0.8
A6	0.06	0.2	0.4
A7	0.60	0.3	1.9
OS-B1	0.07	0.0	0.2
OS-B2	0.14	0.1	0.4
OS-B3	0.36	0.2	1.1
B1	1.14	2.7	5.8
B2	0.46	1.4	2.8
B3	0.13	0.5	1.0
B4	0.78	2.5	4.8
B5	0.47	0.2	1.5
B6	0.06	0.2	0.4
B7	0.13	0.5	0.9

PROPOSED CONDITIONS

BASIN	ACRES	Q5 CFS	Q100 CFS
B8	0.10	0.4	0.7
B9	0.07	0.2	0.4
B10	0.07	0.5	0.9
B11	0.05	0.2	0.4
B12	0.05	0.2	0.4
B13	0.11	0.4	0.8
B14	0.12	0.5	0.8
B15	0.05	0.2	0.4
B16	0.04	0.2	0.3
B17	0.11	0.4	0.8
B18	0.11	0.4	0.8
B19	0.07	0.3	0.5
B20	0.07	0.3	0.5
B21	0.53	0.2	1.4
OS-C	0.06	0.0	0.2
C1	1.29	3.2	6.5
C2	0.45	1.3	2.6

PROPOSED CONDITIONS

BASIN	ACRES	Q5 CFS	Q100 CFS
C3	0.07	0.3	0.5
C4	0.05	0.2	0.4
C5	0.06	0.2	0.4
C6	0.11	0.4	0.8
C7	0.11	0.4	0.8
C8	0.06	0.2	0.4
C9	0.06	0.2	0.4
C10	0.44	0.2	1.4
D	1.06	3.1	6.6

BARNES & MEDICAL VIEW APARTMENTS

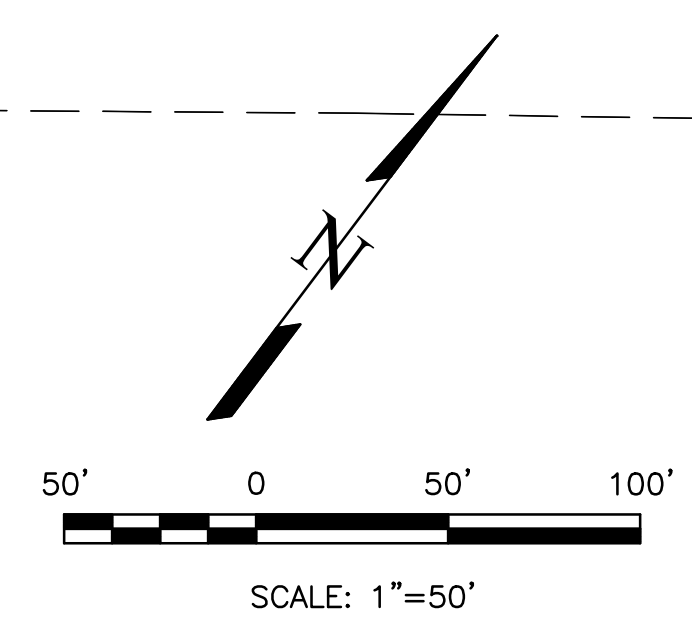
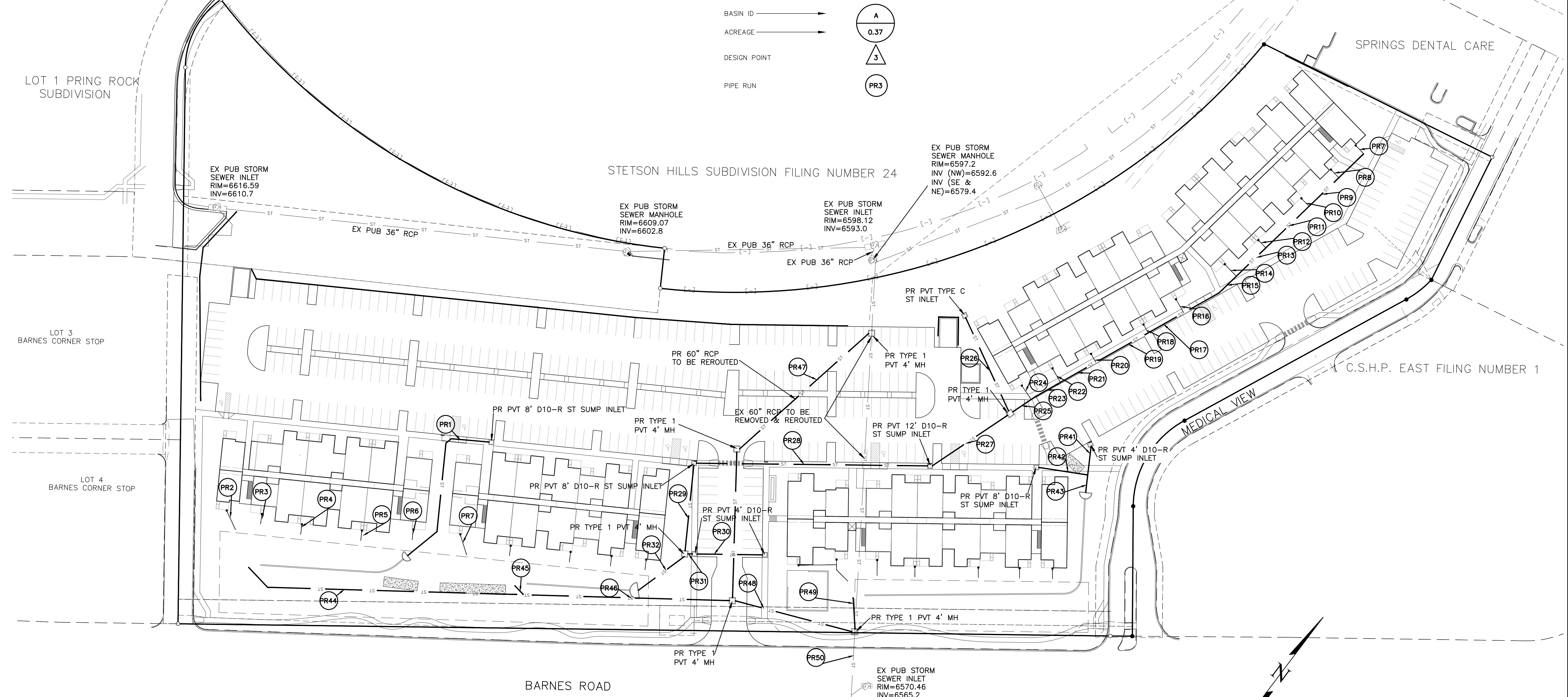
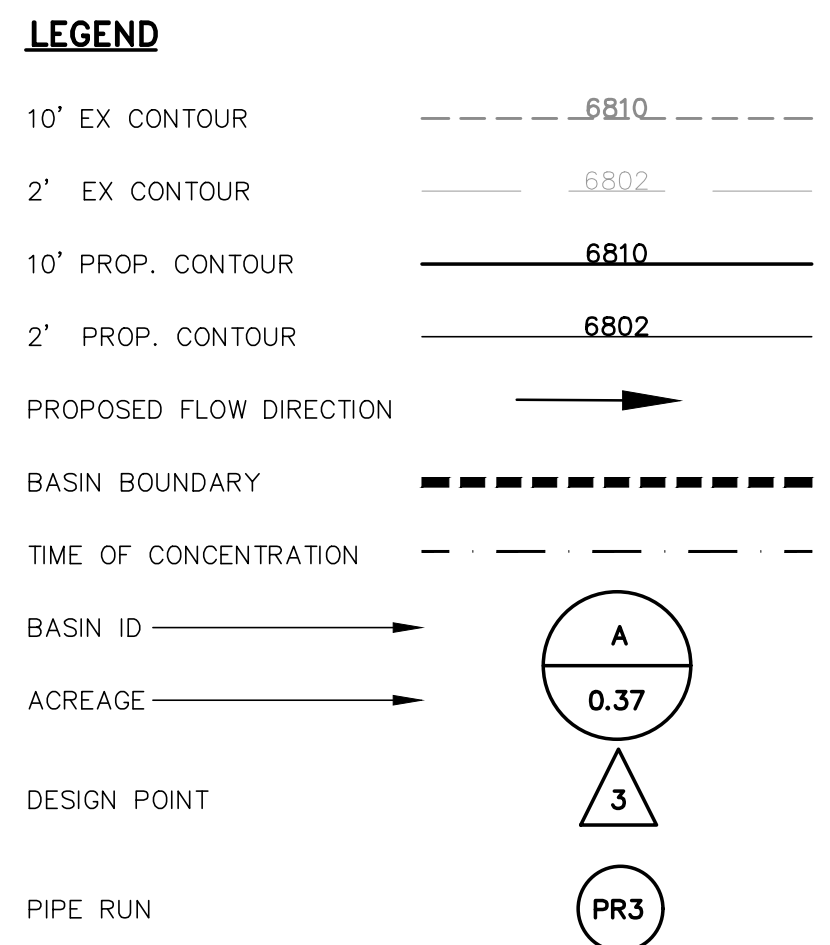
COLORADO SPRINGS, CO

PROPOSED DRAINAGE MAP

DECEMBER 2018

DESIGN POINT SUMMARY

DP	CONTRIBUTING BASINS	AREA AC.	Q5 CFS	Q100 CFS	INLET SIZE/TYPE	OWNER
1	A1	0.22	3.6	8.7	8' D10-R SUMP	PRIVATE
2	A1-A7	3.17	5.1	12.5	WEST POND	PRIVATE
3	B1	1.14	2.5	5.8	8' D10-R SUMP	PRIVATE
4	B2 & OS-B1	0.53	1.4	3.0	4' D10-R SUMP	PRIVATE
5	B3 & OS-B3	0.27	0.6	1.4	4' D10-R SUMP	PRIVATE
6	B4	0.78	2.5	12.6	12' D10-R SUMP	PRIVATE
7	B21 & OS-B3	0.89	0.4	2.4	TYPE "C" INLET	PRIVATE
8	B1-B21	4.72	10.7	22.9	MIDDLE POND	PRIVATE
9	C1	1.29	3.2	6.5	8' D10-R SUMP	PRIVATE
10	C2 & OS-C	0.45	1.3	2.8	4' D10-R SUMP	PRIVATE
11	C1-C10	2.70	5.9	13.0	EAST POND	PRIVATE



DATE: _____
 REVISIONS: _____
 NO. _____
 DESCRIPTION: _____

UNTIL SUCH TIME AS THESE DRAWINGS ARE APPROVED BY THE FOLLOWING AGENCIES: THE CITY OF COLORADO SPRINGS, THE COUNTY OF EL PASO, AND TERRA NOVA ENGINEERING, INC. APPROVES THEIR USE ONLY FOR THE PROJECT AND SITE SPECIFICALLY IDENTIFIED BY THIS DOCUMENT. NO OTHER WRITTEN AUTHORIZATION.

PREPARED FOR:
PAVILION CONSTRUCTION
 ATTN: CASEY CAMERON
 16037 SW BOONESFERRY RD
 TIGARD, OR 97224
 503-332-6562

Terra Nova
 Engineering, Inc.
 A Terra Nova Group Company
 721 S. 29th STREET
 COLORADO SPRINGS, CO 80904
 OFFICE: 719-635-6422
 FAX: 719-635-6426
 www.tneshinc.com

BARNES & MEDICAL VIEW APARTMENTS
 STORM SEWER LAYOUT

DESIGNED BY QNA
 DRAWN BY QNA
 CHECKED BY _____
 H-SCALE AS NOTED
 V-SCALE N/A
 JOB NO. 1859.00
 DATE ISSUED 12/18/18
 SHEET NO. 3 OF 4