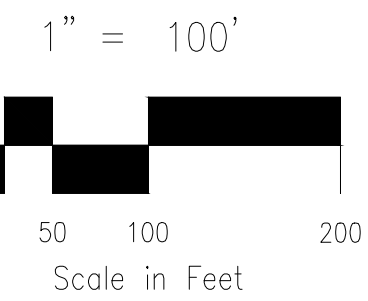


BRADLEY RANCH

MASTER DEVELOPMENT DRAINAGE PLAN MAP

AUGUST 2017



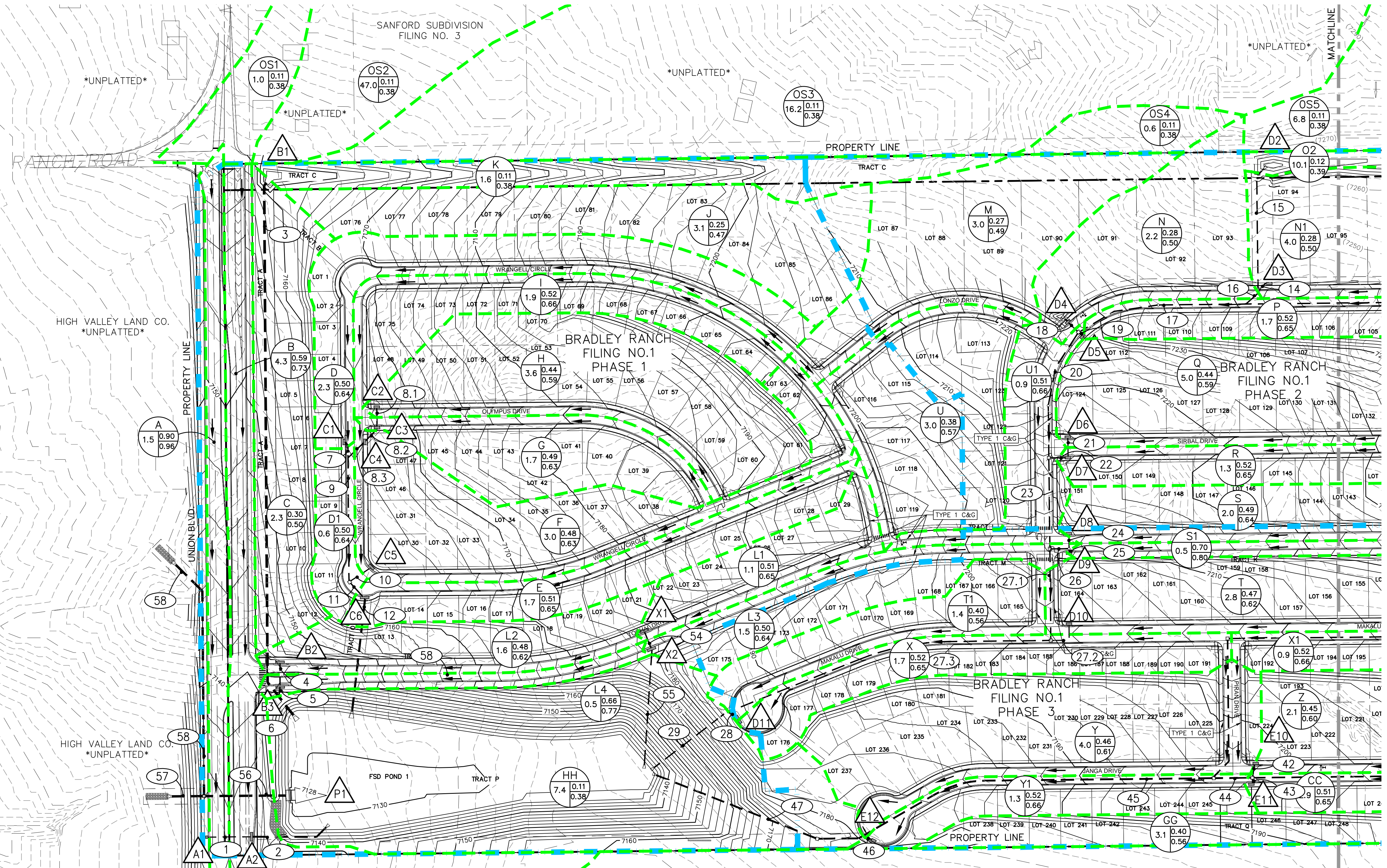
DESIGN POINT SUMMARY				
DESIGN POINT	Q ₅	Q ₁₀₀	BASIN, FB, PR	STRUCTURE
A1	5.7	10.3	A	6" D-10-R SUMP INLET
A2	10.1	25.7	B,C DPB2,DPB3	14" D-10-R @ GRADE INLET
B1	15.6	86.4	J,K,OS2,OS3	CULVERT
B2	3.5	12.2	L2 X1	14" D-10-R @ GRADE INLET
B3	1.5	12.9	L4 X2	14" D-10-R @ GRADE INLET
C1	4.6	9.9	D	10" D-10-R @ GRADE INLET
C2	6.2	10.7	H	12" D-10-R @ GRADE INLET
C3	3.3	10.6	G	12" D-10-R @ GRADE INLET
C4	4.0	8.5	I DPC2,DPC3	12" D-10-R @ GRADE INLET
C5	6.4	14.3	F DPC4	12" D-10-R SUMP INLET
C6	5.1	14.0	D1,E DPC1	12" D-10-R SUMP INLET
D2	3.5	20.3	O2,OS5	CULVERT
D3	3.9	12.9	N1,O1	10" D-10-R @ GRADE INLET
D4	2.3	9.4	N DPD3	12" D-10-R @ GRADE INLET
D5	3.7	10.6	P	12" D-10-R @ GRADE INLET
D6	8.6	12.6	Q	14" D-10-R @ GRADE INLET
D7	2.9	13.7	R	14" D-10-R @ GRADE INLET
D8	4.4	9.5	S	12" D-10-R @ GRADE INLET
D9	1.7	3.2	S1	6" D-10-R @ GRADE INLET
D10	10.8	24.8	T,V1 E7	16" D-10-R @ GRADE INLET
D11	6.7	20.0	TI,X1,DPE8,DPD10	16" D-10-R SUMP INLET
E10	6.6	14.1	Z,AA DPE9	16" D-10-R @ GRADE INLET
E11	5.8	15.8	CC	16" D-10-R @ GRADE INLET
E12	8.4	22.5	Y,Y1 DPE10,DPE11	16" D-10-R SUMP INLET
X1	10.1	19.4	L1,U1,M,OS4 DPD4,DPD8	14" D-10-R @ GRADE INLET
X2	3.4	26.5	L3 DPD9	14" D-10-R @ GRADE INLET

STORM SEWER SUMMARY			
PIPE RUN	Q ₅	Q ₁₀₀	PIPE SIZE
2	14.3	33.3	30" RCP
3	15.6	86.4	48" RCP
4	3.5	10.0	24" RCP
5	3.9	15.5	24" RCP
6	18.1	96.1	48" RCP
7	4.5	7.3	30" RCP
8.1	6.1	8.9	18" RCP
8.2	9.4	17.7	24" RCP
8.3	13.2	25.0	30" RCP
9	17.1	31.2	30" RCP
10	6.4	14.3	24" RCP
11	22.3	43.0	36" RCP
12	26.6	54.8	36" RCP
14	3.9	8.4	18" RCP
15	3.5	20.3	24" RCP
16	7.4	27.6	36" RCP
17	10.9	48.8	36" RCP
19	3.7	8.8	18" RCP
20	16.0	63.3	42" RCP
21	8.2	10.6	18" RCP
22	10.9	20.8	24" RCP
23	25.6	81.2	42" RCP
24	4.4	7.8	18" RCP
25	1.7	2.6	18" RCP
26	6.0	10.3	18" RCP
27.1	30.4	89.4	48" RCP
27.2	10.4	17.0	24" RCP
27.3	39.1	103.2	48" RCP
28	6.7	20.0	24" RCP
29	43.4	117.2	48" RCP
42	6.6	12.3	24" RCP
43	5.8	13.2	24" RCP
44	17.0	34.6	30" RCP
45	34.6	100.2	48" RCP
46	8.4	22.5	24" RCP
47	41.3	118.1	48" RCP
54	9.6	14.4	24" RCP
55	12.3	27.3	30" RCP
56	28.4	148.9	48" RCP
57	7.2	41.5	42" RCP
58	21.2	107.4	42" RCP

NOTE:
ALL CURB AND GUTTER ARE TYPE 5 UNLESS OTHERWISE NOTED.

BASIN SUMMARY			
BASIN	AREA (ACRES)	Q ₅	Q ₁₀₀
A	1.53	5.7	10.3
B	4.32	9.7	19.8
C	2.32	2.5	7.1
CC	2.91	5.8	12.4
D	2.26	4.6	9.9
D1	0.57	1.2	2.6
E	1.72	3.8	8.1
F	3.01	6.4	13.9
G	1.72	3.3	7.2
GG	3.14	6.3	14.7
H	3.56	6.2	14.1
HH	7.41	3.0	17.5
I	1.87	4.0	8.5
J	3.06	2.7	8.6
K	1.64	0.6	3.8
L1	1.15	2.6	5.6
L2	1.61	3.6	7.8
L3	1.50	3.4	7.2
L4	0.51	1.6	3.1
M	3.01	3.1	9.7
N	2.22	2.6	7.8
N1	4.01	3.7	12.0
O2	0.63	0.3	1.5
P	1.69	3.7	8.0
Q	4.96	8.6	19.5
R	1.31	2.9	6.2
S	2.01	4.4	9.5
S1	0.50	1.7	3.2
T	2.84	6.0	13.2
TI	1.42	2.8	5.9
U	2.80	4.1	10.3
U1	1.16	2.3	5.4
X	1.71	3.6	7.6
X1	0.88	2.1	4.4
Y	3.99	6.8	15.1
Y1	1.26	2.7	5.7
Z	2.13	3.6	8.1
OS1	0.98	0.4	2.4
OS2	47.03	10.2	59.2
OS3	16.17	5.1	29.8
OS4	0.63	0.3	1.8
OS5	6.81	3.2	18.6

POND 1 FULL SPECTRUM DETENTION BASIN DATA
 WQ WATER SURFACE EL=7131.28
 WQ VOLUME=2,264 AC-FT
 EURV WATER SURFACE EL=7132.81
 EURV VOLUME=5,820 AC-FT
 100-YR WATER SURFACE EL=7137.77
 SPILLWAY CREST EL=7136.22
 TOP OF EMBANKMENT EL=7140.00
 100-YR VOLUME=15,280 AC-FT
 100-YR INFLOW=412.6 CFS
 100-YR RELEASE=148.9 CFS



LEGEND

	PIPE RUN REFERENCE LABEL		BASIN DESIGNATION		EXISTING MAJOR DRAINAGE BASIN BOUNDARY LINE
	SURFACE DESIGN POINT		ACRES		PHASE LINE
	BASIN BOUNDARY		EXISTING FLOW DIRECTION ARROW		EMERGENCY OVERFLOW DIRECTION
	EXISTING CONTOUR		FLOW DIRECTION		FLARED END SECTION
	PROPOSED CONTOUR		PERIMETER SWALE		PROPERTY LINE
	STORM SEWER PIPE		H.P. HIGH POINT		L.P. LOW POINT
	CROSSSPAN		11 LOT NUMBER		
	INLET				
	STREET GRADE W/DIRECTION				

BRADLEY RANCH
MDDP MAP (PROPOSED CONDITIONS)

PROJECT NO. 43-093	SCALE: HORIZONTAL: 1"=100' VERTICAL: N/A	DATE: 06/16/2017	D1
DESIGNED BY: CN	CHECKED BY: DM	SHEET 1 OF 2	
DRAWN BY: CN			

File: C:\3093A\Bradley Ranch\Map\Map\Plan\01-2.dwg PlotStamp: 8/11/2017 11:38 AM

FOR LOCATING & MARKING GAS, ELECTRIC, WATER & TELEPHONE LINES
 FOR BURIED UTILITY INFORMATION
 48 HRS BEFORE YOU DIG
 CALL 1-800-922-1987