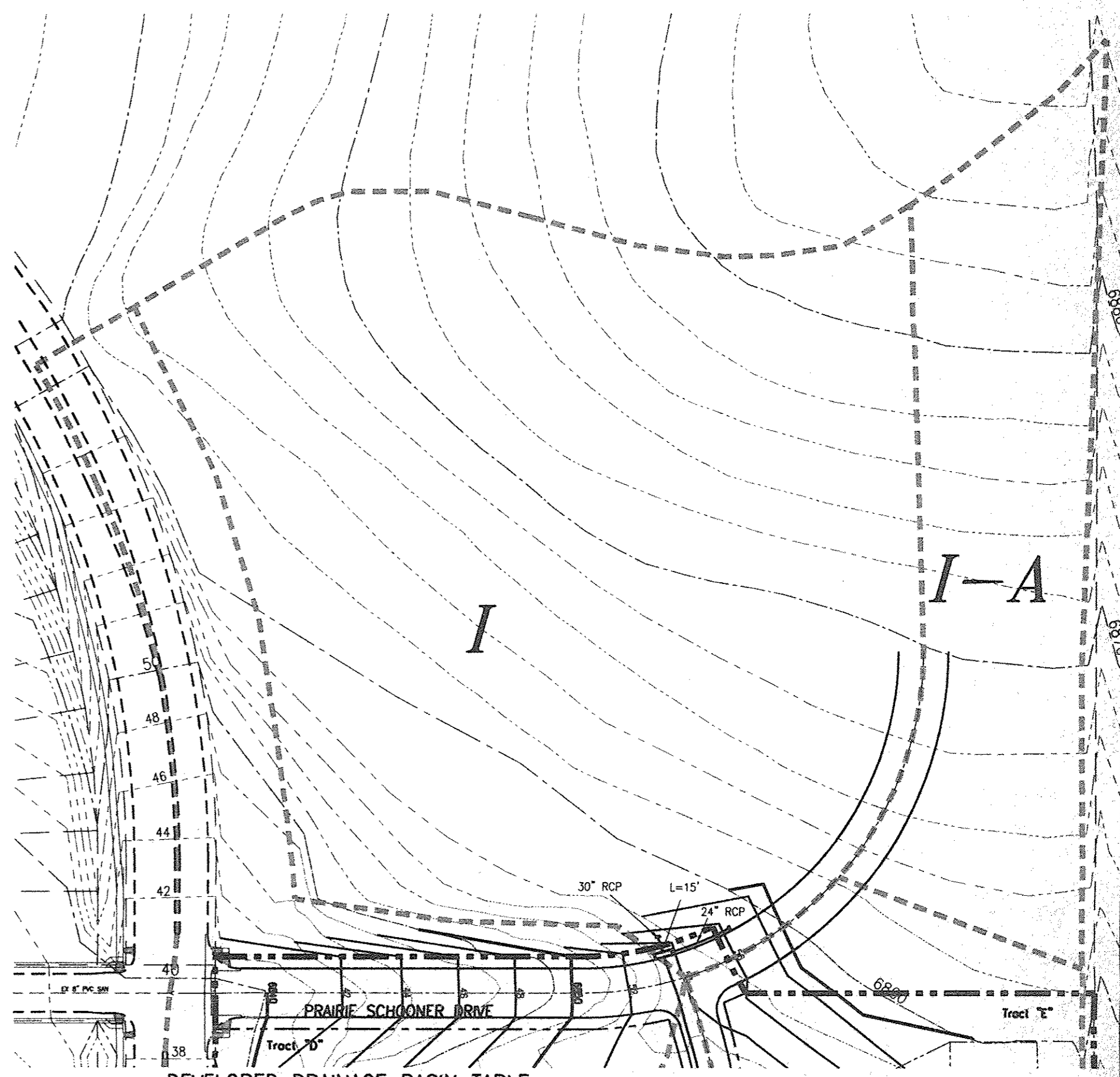
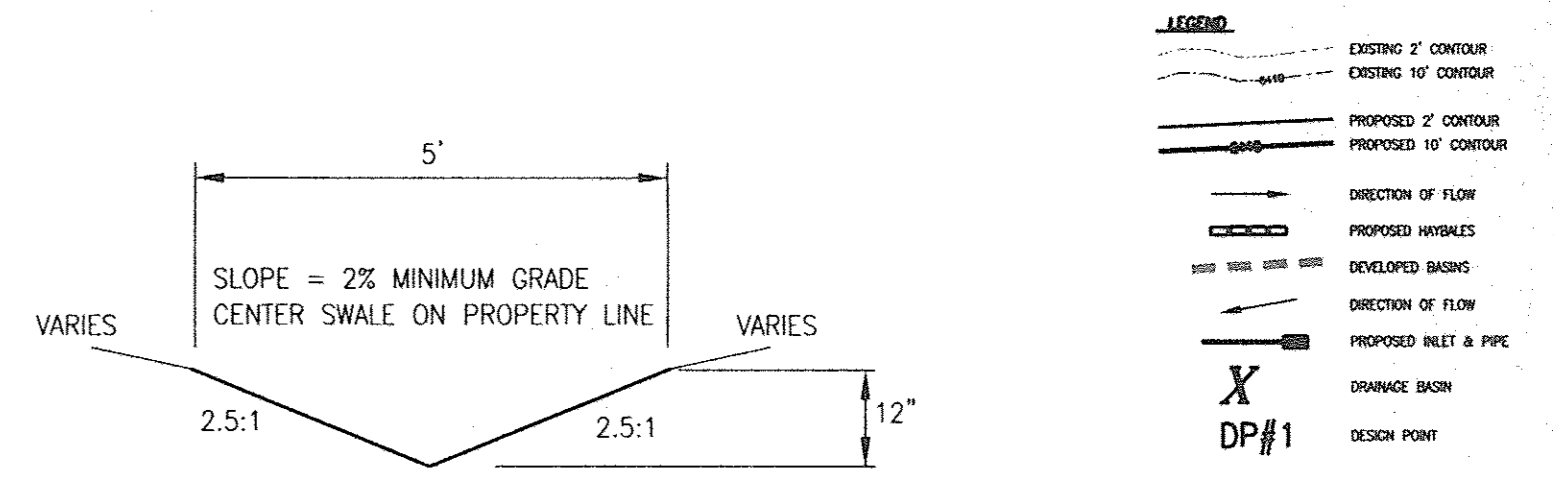
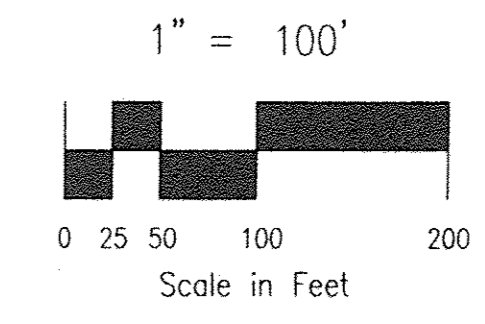


Vicinity Map
NOT TO SCALE



DEVELOPED DRAINAGE BASIN TABLE

BASIN	AREA (Ac.)	Q _s (CFS)	Q ₁₀₀ (CFS)
I-A	2.61	10.6	18.6
I	8.31	32.9	59.1
II	6.86	13.3	25.6
III	2.79	6.7	14.5
IV	6.34	14.8	31.5
V	3.16	6.6	14.9
VI	3.07	7.9	16.8
VII	3.49	8.4	18.1
VIII	1.39	3.4	8.1
IX-A	0.72	2.0	4.4
IX-B	1.16	2.8	6.0
X	2.70	7.0	14.7
XI	0.57	1.8	3.6
XII	0.88	2.6	5.5
XIII	2.98	6.8	14.8
XIV	0.34	1.0	2.1
XV	0.49	1.4	3.1
XVI	0.26	0.8	1.6
XVII	2.48	6.7	14.2
XVIII	1.71	4.6	9.8
XIX	3.81	10.7	21.1
XX	2.63	8.1	14.7
XXI	4.90	7.6	17.7
XXII	3.16	6.4	14.5
XXIII	0.62	2.7	4.7

DESIGN POINT TABLE

BASIN	AREA (Ac.)	Q _s (CFS)	Q ₁₀₀ (CFS)
DP#1	20.57	51.3	93.8
DP#2	4.88	11.7	25.3
DP#3	19.33	44.2	84.3
DP#3A	22.6	52.1	109.4
DP#4	4.07	9.3	20.2
DP#5	10.63	26.9	54.7
DP#6	32.45	71.0	150.2

EXHIBIT 2
FILE: 01075DP2.DWG 1/3/03

ROCKWELL MINCHOW
CONSULTANTS, INC.

ENGINEERING • SURVEYING
1873 AUSTIN BLUFFS PARKWAY
COLORADO SPRINGS, CO 80918
(719) 435-2075 • FAX (719) 435-9223

**BRIDLE PASS SUBDIVISION
DEVELOPED DRAINAGE PLAN**

TITLE :
SCALE : 1"=100'
DATE : 1/3/03

DRAWN BY : KDR
CHECKED BY : KDR

01-075
JOB NO.