

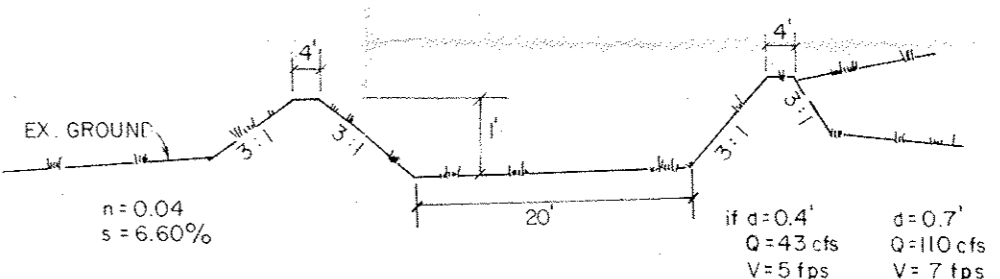
DRAINAGE PLAN
BROADMOOR BLUFFS ESTATES
 COLORADO SPRINGS, COLORADO
 FOR: GATES LAND COMPANY

DREXEL, BARRELL & CO.		ENGINEERS — SURVEYORS	
1700 30TH STREET 3405 N. EL PASO STREET		BOULDER, COLORADO 80501 COLORADO SPRINGS, COLORADO 80907	
Date	16 AUG. 84	Job No.	E-3098
Scale	1" = 100'	Drawn by	DFW
Revisions — Date		Drawing No.	3D 470



SCALE: 1" = 100'

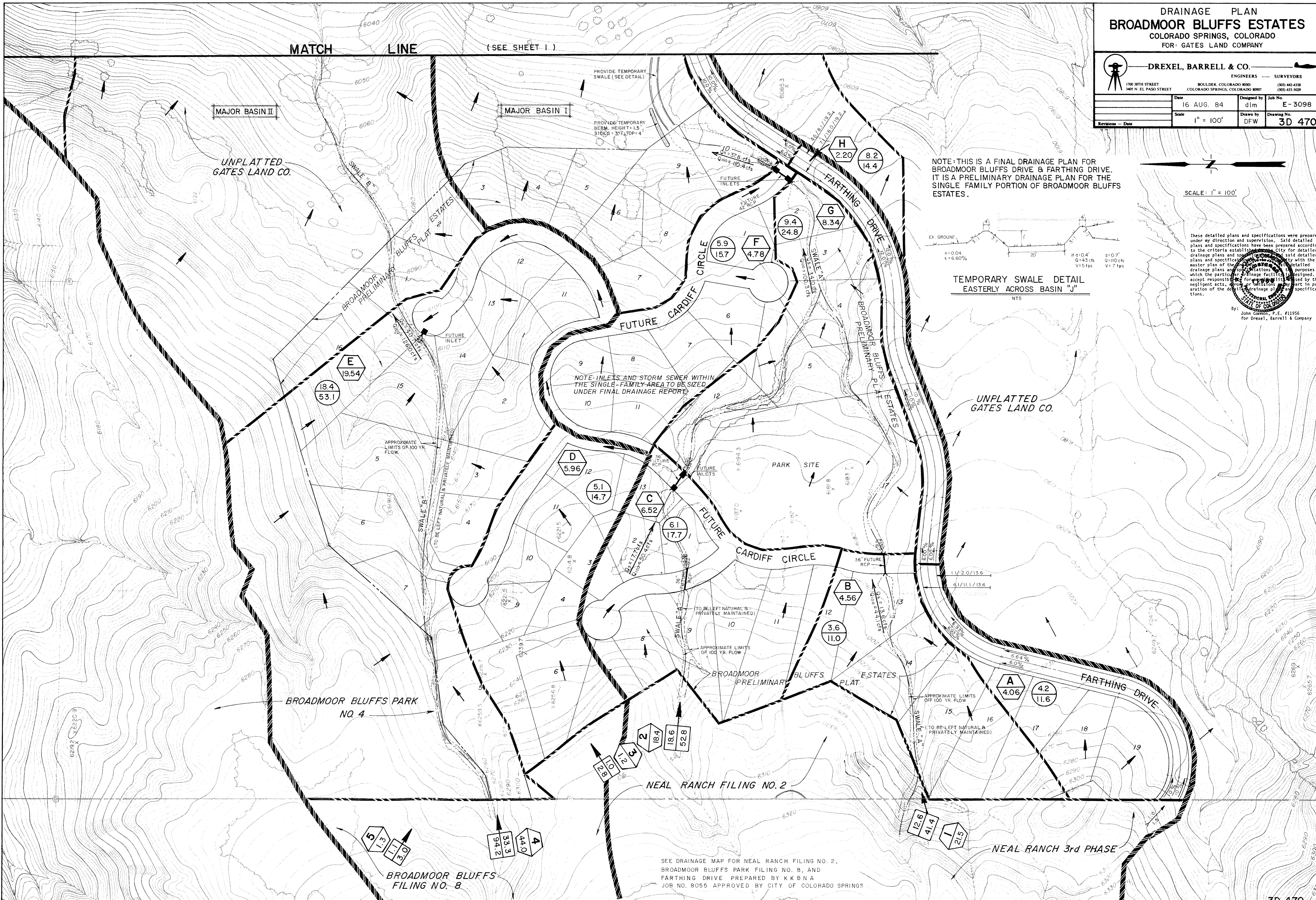
NOTE: THIS IS A FINAL DRAINAGE PLAN FOR BROADMOOR BLUFFS DRIVE & FARTHING DRIVE. IT IS A PRELIMINARY DRAINAGE PLAN FOR THE SINGLE FAMILY PORTION OF BROADMOOR BLUFFS ESTATES.



TEMPORARY SWALE DETAIL
 EASTERLY ACROSS BASIN "J"
 NTS

These detailed plans and specifications were prepared under my direction and supervision. Said detailed plans and specifications have been prepared according to the criteria established by the City for detailed drainage plans and specifications. I accept responsibility for the design and specifications of the drainage facilities designed. I accept responsibility for any omissions or errors in preparation of the detailed drainage plan and specifications.

By: John Coonan, P.E. #11956
 for Drexel, Barrell & Company



NOTE: INLETS AND STORM SEWER WITHIN THE SINGLE-FAMILY AREA TO BE SIZED UNDER FINAL DRAINAGE REPORT.

SEE DRAINAGE MAP FOR NEAL RANCH FILING NO. 2, BROADMOOR BLUFFS PARK FILING NO. 8, AND FARTHING DRIVE PREPARED BY KKBNA JOB NO. 8055 APPROVED BY CITY OF COLORADO SPRINGS