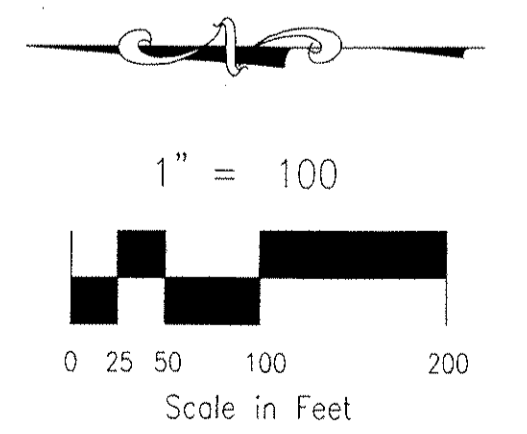
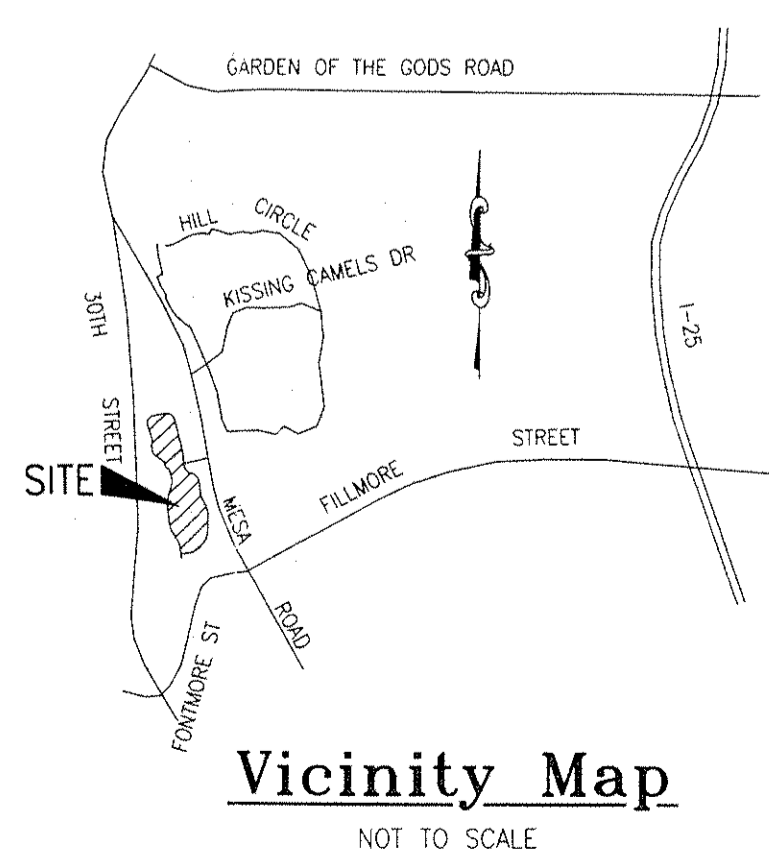
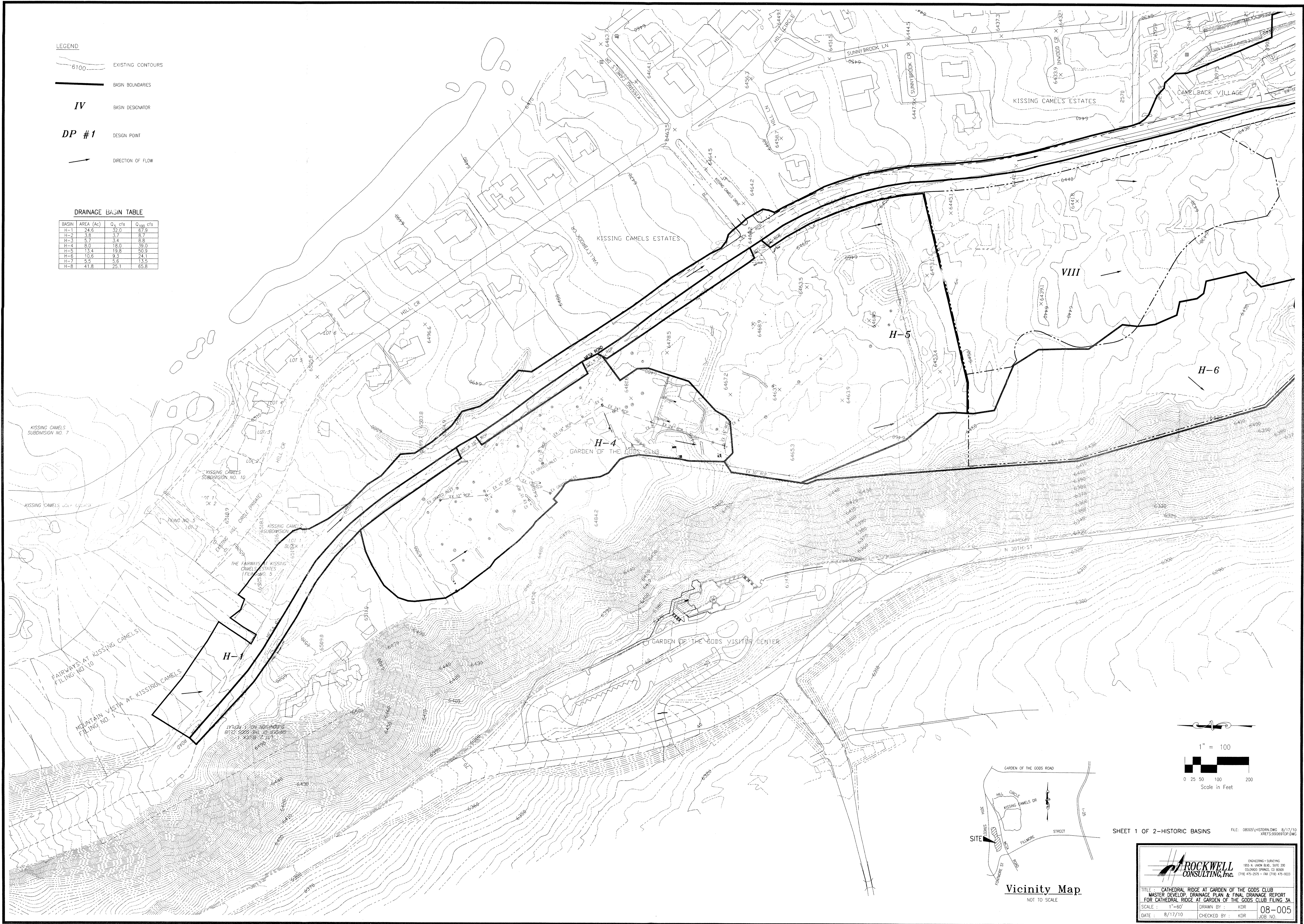


- LEGEND**
- 6100 EXISTING CONTOURS
 - BASIN BOUNDARIES
 - IV** BASIN DESIGNATOR
 - DP #1** DESIGN POINT
 - DIRECTION OF FLOW

DRAINAGE BASIN TABLE

BASIN	AREA (Ac)	Q ₂ cfs	Q ₁₀₀ cfs
H-1	24.6	32.0	87.9
H-2	3.8	3.7	8.7
H-3	5.7	3.4	8.8
H-4	8.0	18.0	39.0
H-5	13.4	19.8	50.9
H-6	10.8	9.3	24.1
H-7	5.5	5.6	13.5
H-8	41.8	25.1	65.8



SHEET 1 OF 2—HISTORIC BASINS FILE: 08065\HISTDRN.DWG 8/17/10 XREFS:99069.TCP.DWG

ROCKWELL CONSULTING, Inc. ENGINEERING • SURVEYING
 1555 N. UNION BLVD., SUITE 200
 COLORADO SPRINGS, CO 80909
 (719) 475-2525 • FAX (719) 475-8223

TITLE: CATHEDRAL RIDGE AT GARDEN OF THE GODS CLUB
 MASTER DEVELOP. DRAINAGE PLAN & FINAL DRAINAGE REPORT
 FOR CATHEDRAL RIDGE AT GARDEN OF THE GODS CLUB FILING 3A
 SCALE: 1"=60' DRAWN BY: KDR 08-005
 DATE: 8/17/10 CHECKED BY: KDR JOB NO.