
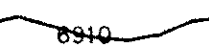




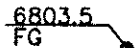


LEGEND

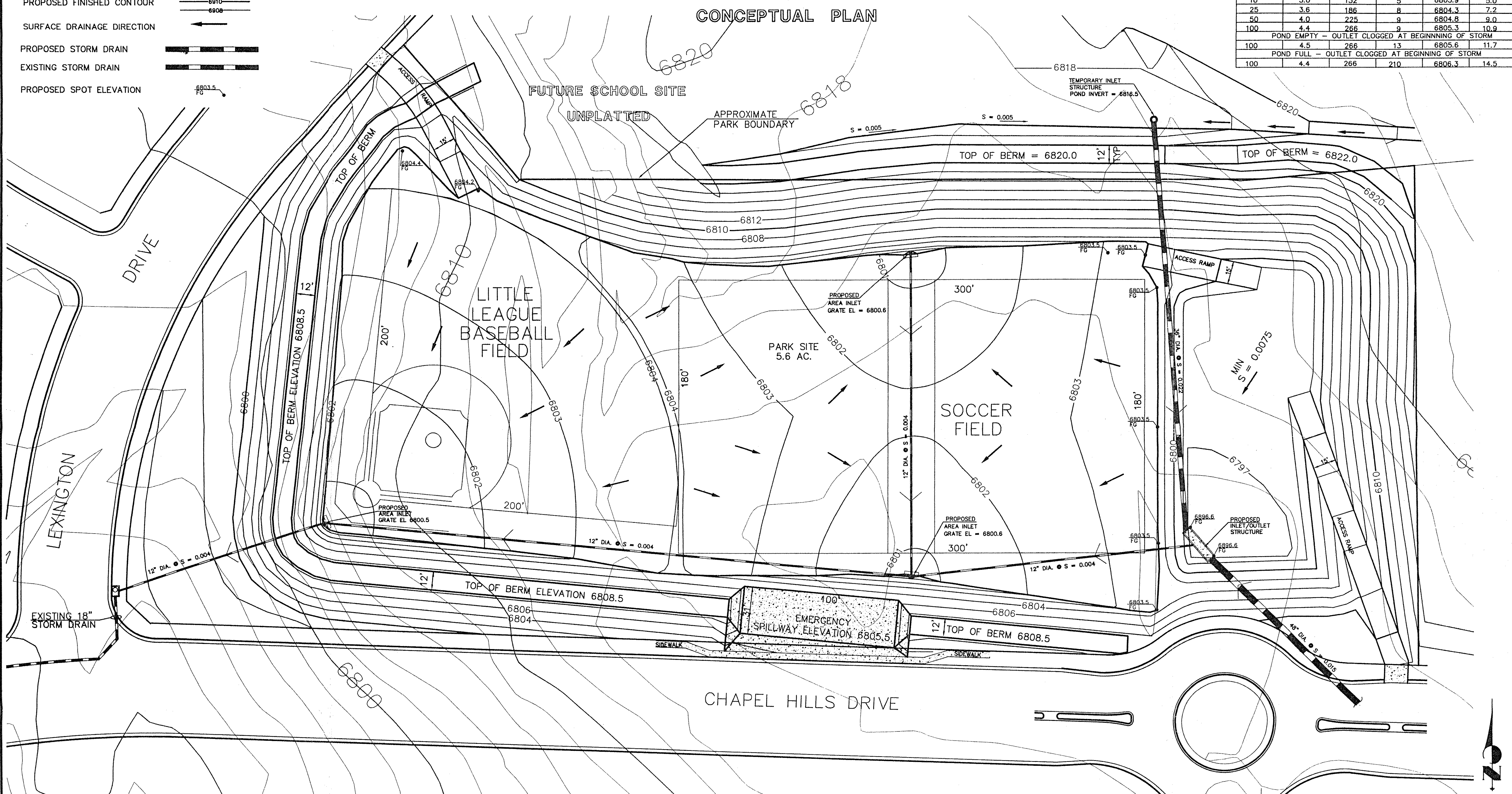
- CONCRETE 
- EXISTING GROUND CONTOUR 
- PROPOSED FINISHED CONTOUR 
- SURFACE DRAINAGE DIRECTION 
- PROPOSED STORM DRAIN 
- EXISTING STORM DRAIN 
- PROPOSED SPOT ELEVATION 

PARK SITE - CHAPEL HILLS DRIVE

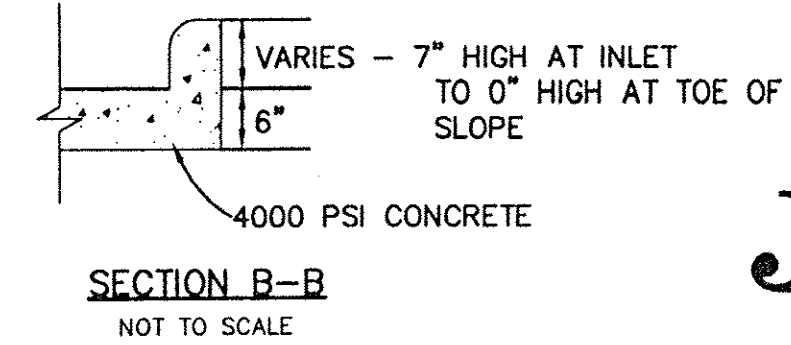
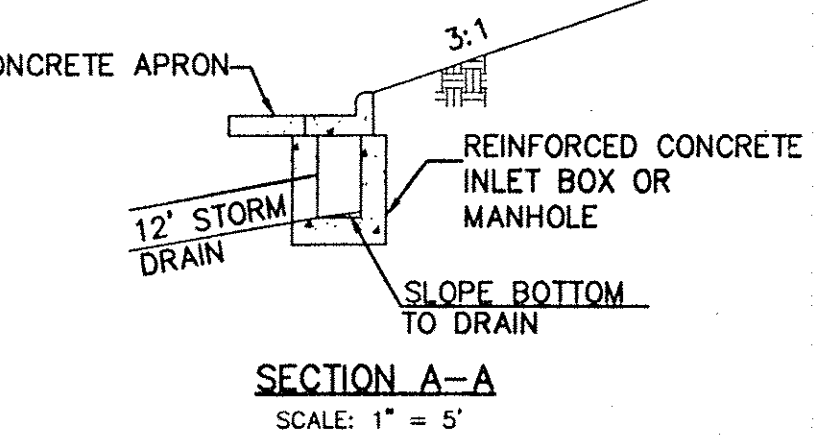
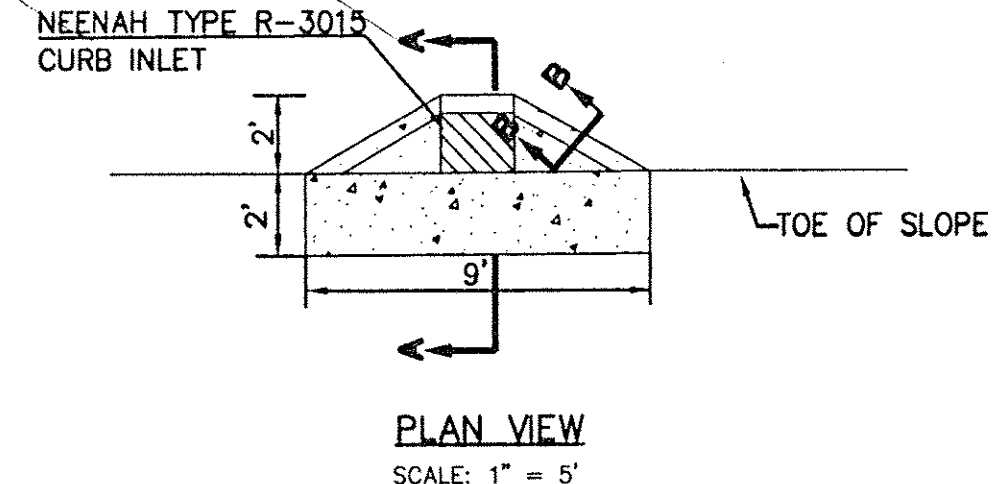
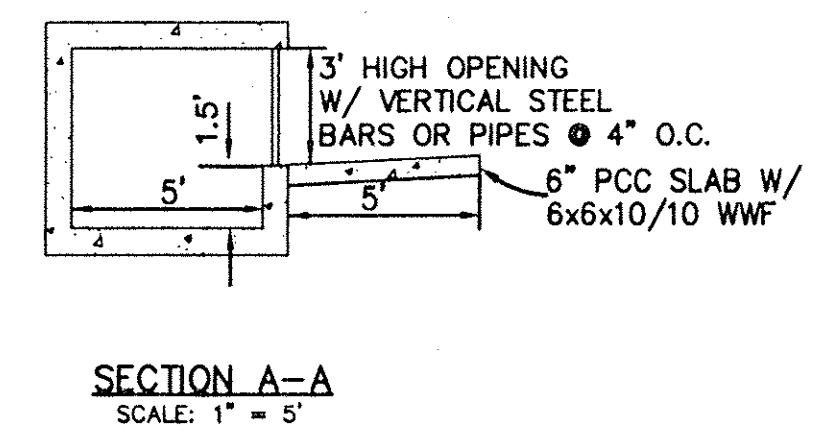
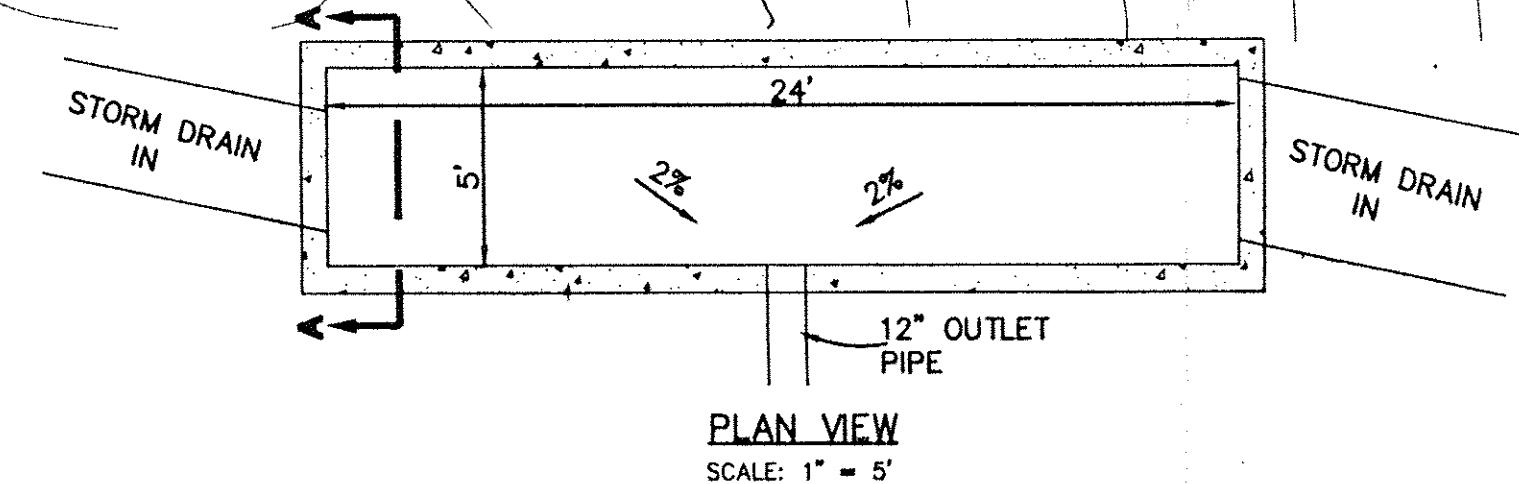
PARK SITE - CHAPEL HILLS DRIVE

CONCEPTUAL PLAN

POND STAGE, STORAGE, & DISCHARGE					
STORM FREQUENCY (years)	RAINFALL DEPTH (in)	PEAK INFLOW (cfs)	PEAK OUTFLOW (cfs)	MAXIMUM STAGE ELEV	MAXIMUM VOLUME (ac-ft)
NORMAL CONDITIONS					
2	2.0	53	4	6801.4	1.7
4	2.4	83	5	6803.5	2.8
5	2.6	98	5	6803.5	3.5
10	3.0	132	5	6803.9	5.0
25	3.6	186	8	6804.3	7.2
50	4.0	225	9	6804.8	9.0
100	4.4	266	9	6805.3	10.9
POND EMPTY - OUTLET CLOGGED AT BEGINNING OF STORM					
100	4.5	266	13	6805.6	11.7
POND FULL - OUTLET CLOGGED AT BEGINNING OF STORM					
100	4.4	266	210	6806.3	14.5



PATH: X:\P70000\ALL\871616\EXHIBITS\FILENAME: CONTOUR.DWG DATE: 12/15/97



30 15 0 30 60

SCALE: 1" = 30'
PARK SITE - CHAPEL HILLS DRIVE
SHEET 2 OF 2

JR Engineering, Ltd.
4935 North 30th Street
Colorado Springs, Colorado 80919
(719) 593-2593 • FAX (719) 528-6613
JOB NO. 8716.16