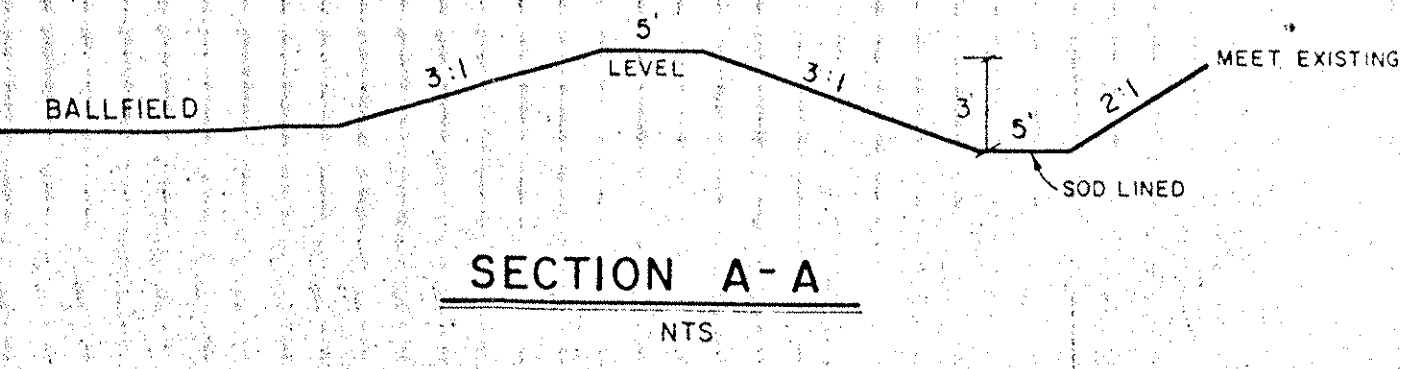


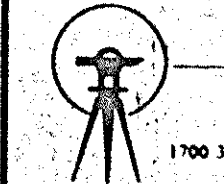
LEGEND

- BERMED & SLOPED (GREATER THAN 4:1) AREAS
- 100 YEAR HIGH WATER
- GRASS AREAS
- DIVERSION CHANNELS
- APPROXIMATE LIMIT OF CONSTRUCTION

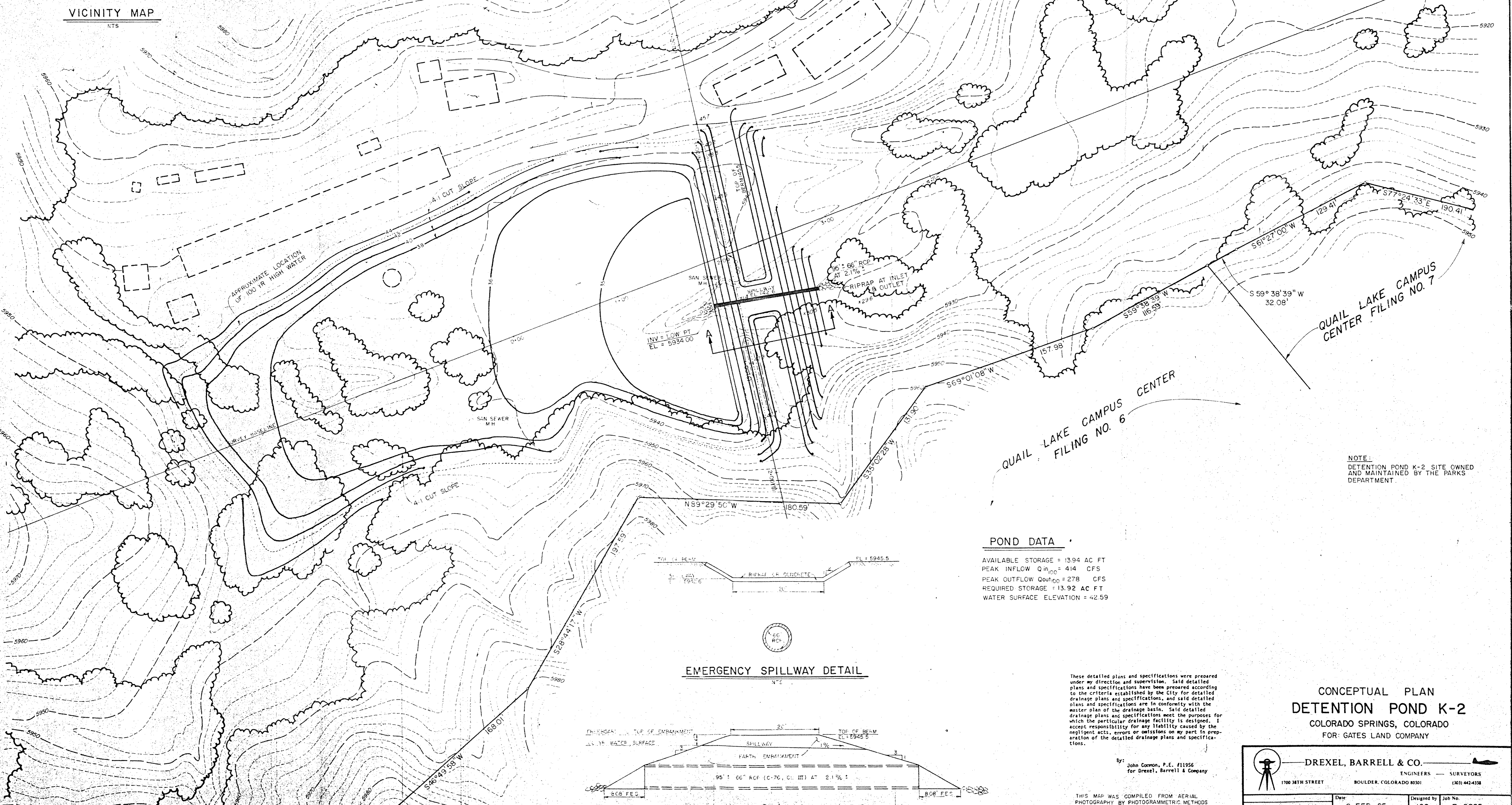
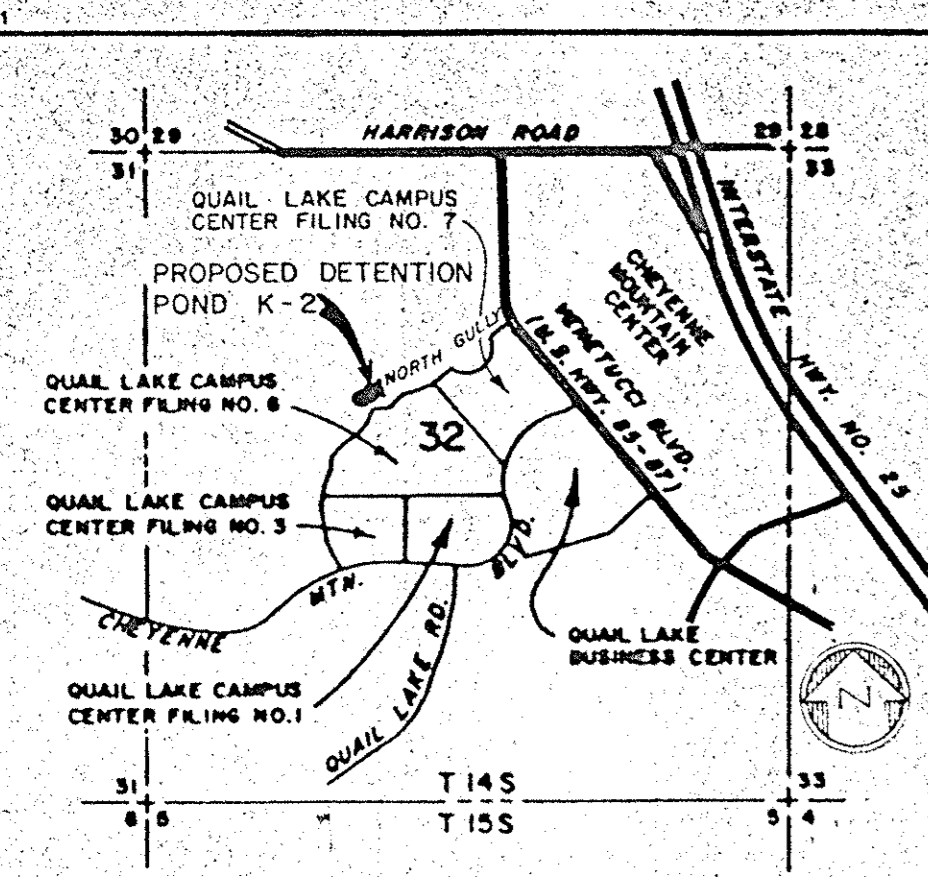
NOTE THE PROPOSED LAYOUT, SIZES AND ELEVATIONS SHOWN ARE APPROXIMATE ONLY



**PRELIMINARY PARK LAYOUT
DETENTION POND K-2
COLORADO SPRINGS, COLORADO
FOR: GATES LAND COMPANY**

 DREXEL, BARRELL & CO. <small>1700 38TH STREET BOULDER, COLORADO 80301</small>	<small>ENGINEERS — SURVEYORS (303) 442-4314</small>	
	<small>Date</small> 12 JUNE 1984	<small>Designed by</small> BJB
<small>Scale</small> 1" = 40'	<small>Drawn by</small> JS/SDS	<small>Drawing No.</small> 3D 460
<small>Revisions — Date</small>		

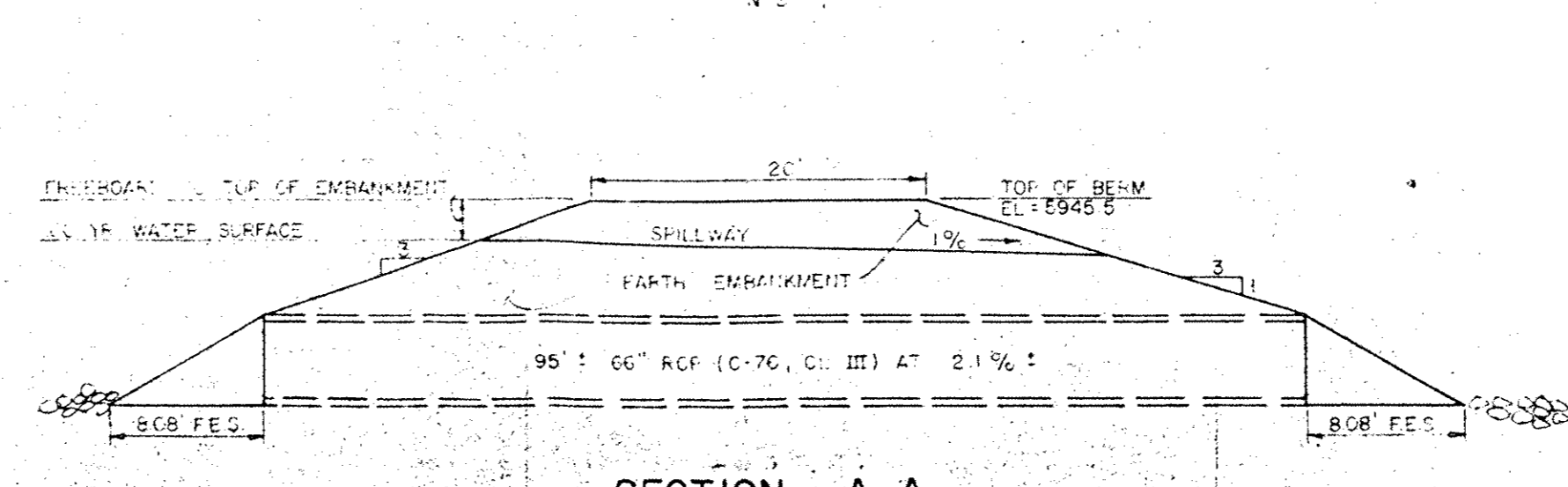
THIS MAP WAS COMPILED FROM AERIAL PHOTOGRAPHY BY PHOTOGRAMMETRIC METHODS AND SUPPLEMENTED WITH FIELD GROUND SURVEY. DATES OF PHOTOGRAPHY 7/29/68 & 3/29/71. DATES OF FIELD SURVEY APRIL & JUNE 1984.



POND DATA

AVAILABLE STORAGE = 13.94 AC FT
 PEAK INFLOW $Q_{in(100)}$ = 414 CFS
 PEAK OUTFLOW $Q_{out(100)}$ = 278 CFS
 REQUIRED STORAGE = 13.92 AC FT
 WATER SURFACE ELEVATION = 42.59

EMERGENCY SPILLWAY DETAIL



NOTE:
 DETENTION POND K-2 SITE OWNED
 AND MAINTAINED BY THE PARKS
 DEPARTMENT.

These detailed plans and specifications were prepared under my direction and supervision. Said detailed plans and specifications have been prepared according to the criteria established by the City for detailed drainage plans and specifications, and said detailed plans and specifications are in conformity with the master plan of the drainage basin. Said detailed drainage plans and specifications meet the purposes for which the particular drainage facility is designed. I accept responsibility for any liability caused by the negligent acts, errors or omissions on my part in preparation of the detailed drainage plans and specifications.

By: John Corwin, P.E. #11956
 for Drexel, Barrell & Company

THIS MAP WAS COMPILED FROM AERIAL PHOTOGRAPHY BY PHOTOGRAMMETRIC METHODS AND SUPPLEMENTED WITH FIELD GROUND SURVEY.
 DATES OF PHOTOGRAPHY 7/29/68 & 3/29/71
 DATES OF FIELD SURVEY APRIL & JUNE 1984

**CONCEPTUAL PLAN
 DETENTION POND K-2
 COLORADO SPRINGS, COLORADO
 FOR: GATES LAND COMPANY**

DREXEL, BARRELL & CO.
 ENGINEERS — SURVEYORS
 1700 38TH STREET BOULDER, COLORADO 80501 (303) 442-4338

Date	8 FEB 85	Designed by	JGS	Job No.	E-2825
Scale	1" = 40'	Drawn by	J.S.	Drawing No.	3D.460