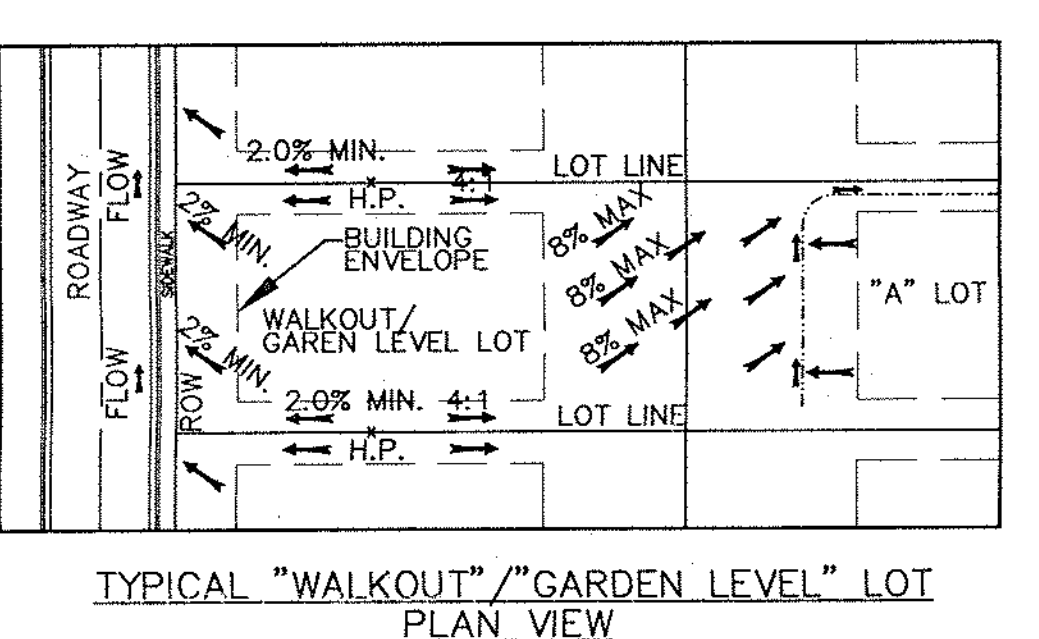
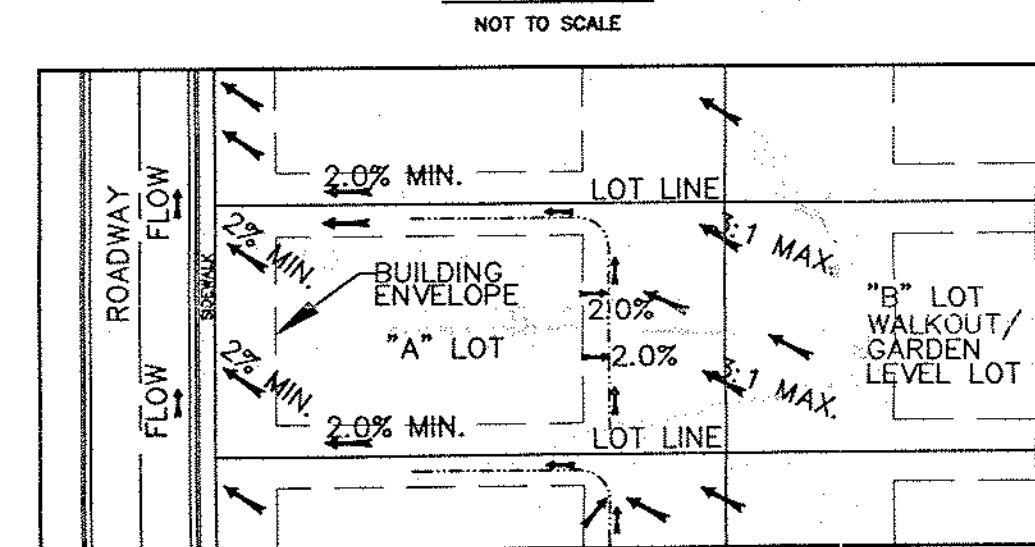
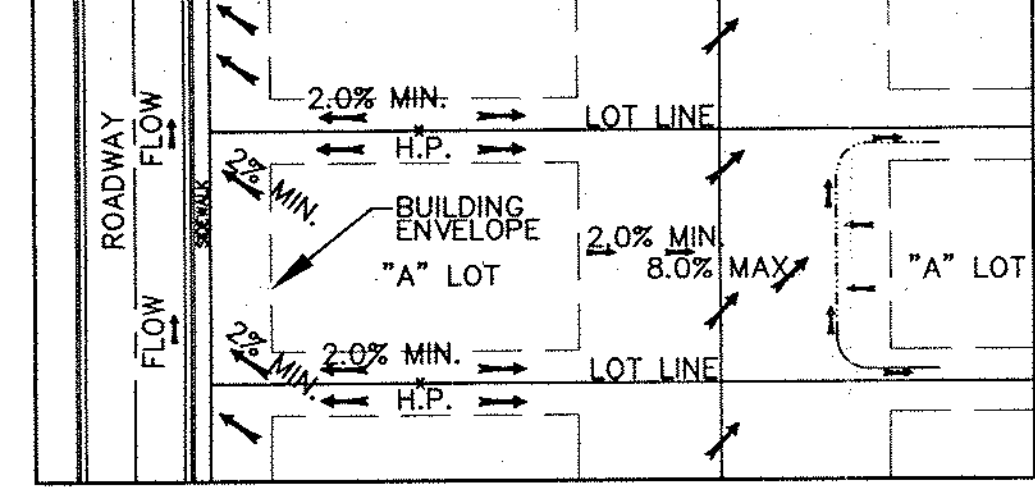
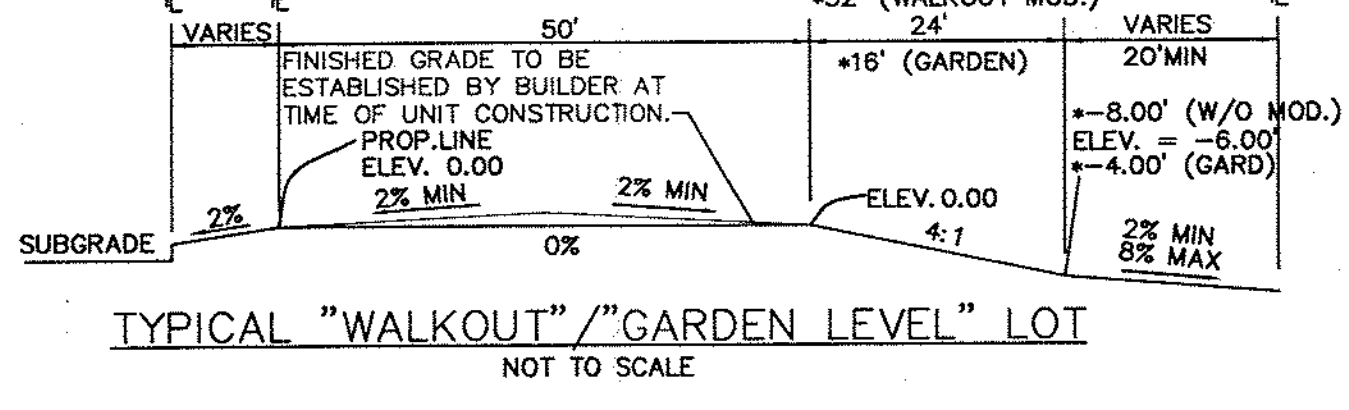
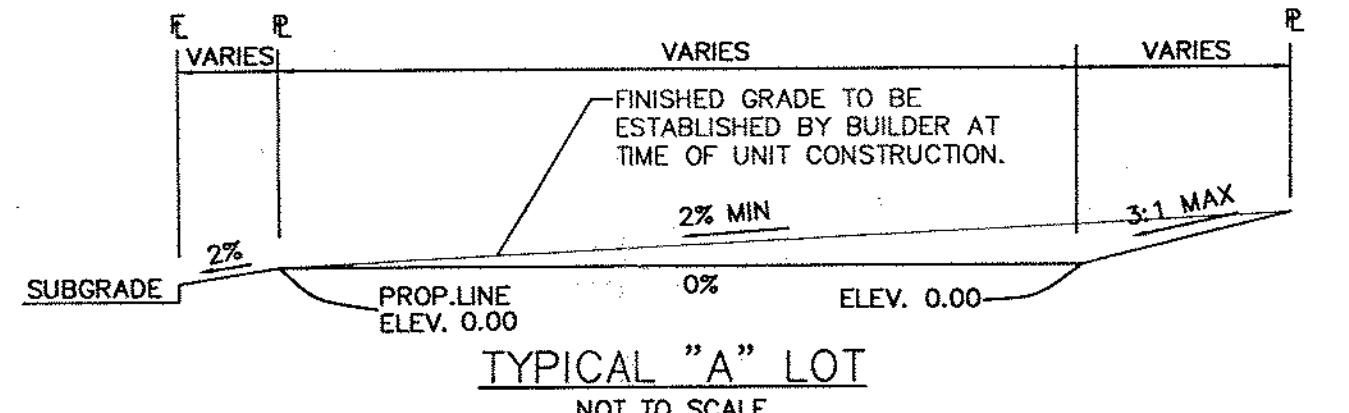
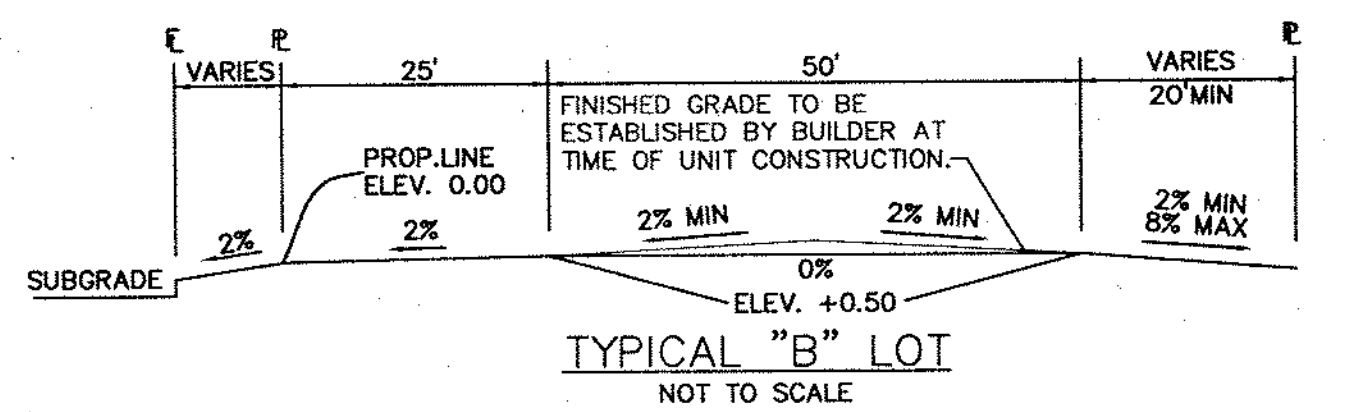


**LEGEND**

- 6520 — PROPOSED CONTOUR
- 6520 — EXISTING CONTOUR
- — PROPOSED STORM DRAIN PIPE
- — EXISTING STORM DRAIN PIPE
- — DRAINAGE DITCH
- — PROPOSED TYPE 'R' INLET
- — PROPOSED TYPE 'I' OR 'II' MANHOLE
- — PROPOSED FLOW DIRECTION ARROW
- ▲ — DESIGN POINT
- ▲ — 5-YEAR STORM EVENT PEAK FLOW (CFS)
- ▲ — 100-YEAR STORM EVENT PEAK FLOW (CFS)
- ▲ — BASIN DESIGNATION
- ▲ — "C" COEFFICIENT (100 YR)
- ▲ — BASIN AREA (ACRES)
- ▲ — FILING LIMITS
- ▲ — DRAINAGE BASIN BOUNDARY

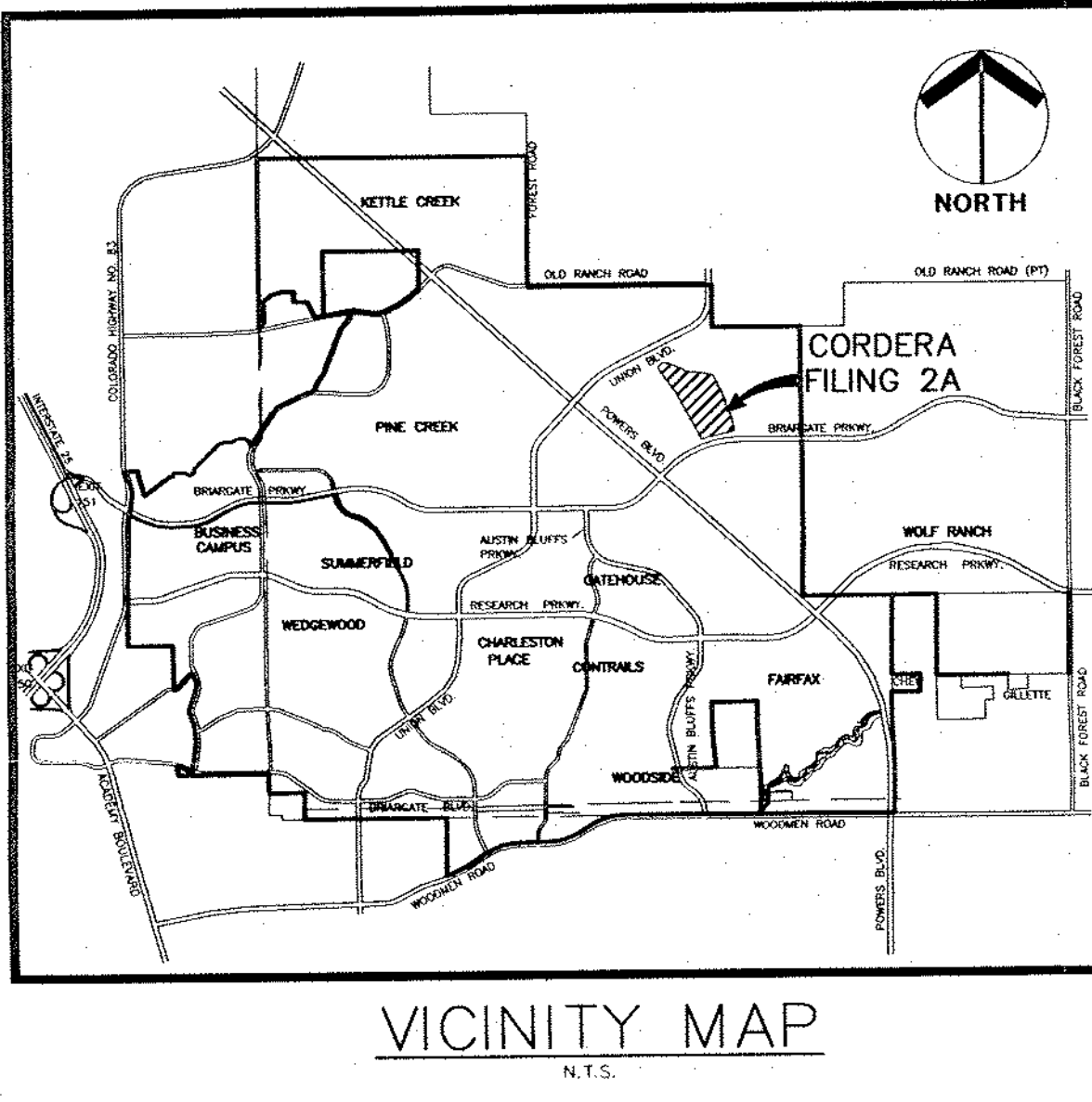
**PINE CREEK SUMMARY TABLE**

DESIGN POINT ID	Q(5) (CFS)	Q(100) (CFS)	SUB-BASINS
P1	4.6	18.1	PF1A, PF1B
P2	5.1	21.0	PF1C, PF1D
P3	15.9	62.5	P1, P2, PF1E, PF2C
P4	54.9	211.2	P3, P8, PF2A, PF2B, PF7A, PF8B
P5	6.9	29.1	PF5B, PF6C
P6	9.6	40.6	P5, PF6A
P7	14.7	61.9	P6, PF7C, PF8D
P8	24.7	101.2	P7, PF7B, PF7D, PF8E, PF8G
P10	64.2	243.8	P4, P8, PF8A, PF8C, PF8F
P11	71.4	269.8	P10, PF9C
P12	77.7	291.3	P11, PF9A, PF9B
P13	50.4	133.2	PF3A, PF3B, PF3C, PF3D
P14	128.8	448.1	P12, P13, PF4A, PF4B, PF4C



**COTTONWOOD CREEK SUMMARY TABLE**

DESIGN POINT ID	Q(5) (CFS)	Q(100) (CFS)	SUB-BASINS
C1	7.6	25.6	CF1E, CF1D
C2	20.6	69.9	C1, CF1A, CF1B, CF1C



**Matrix Design Group, Inc.**  
 Integrated Design Solutions 2925 Professional Place, Suite 202  
 Colorado Springs, CO 80904  
 Phone 719-575-0100  
 Fax 719-575-0208

**CORDERA FILING NO. 2A**  
 DRAINAGE REPORT

FULLY DEVELOPED DRAINAGE MAP  
 FILING NO. 2 INFRASTRUCTURE

DESIGNED BY: RGC SCALE: DATE ISSUED: NOVEMBER 2005  
 DRAWN BY: BJK HORIZ: 1"=100' SHEET NO. 2 OF 3 SHEETS SHT DP02  
 CHECKED BY: VERD VERT: PVA