

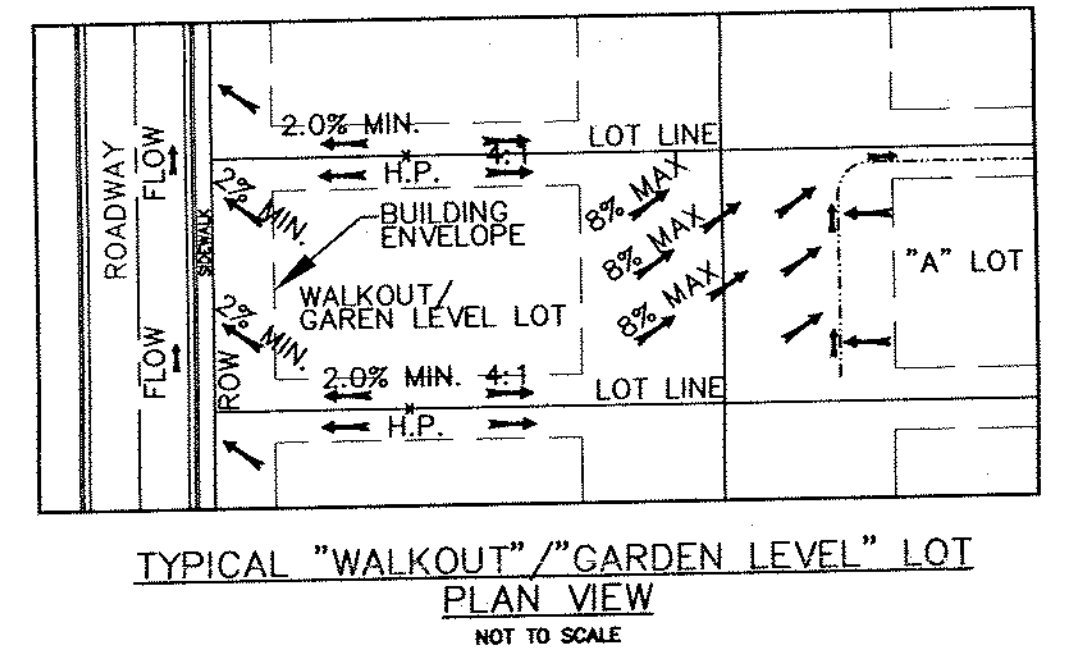
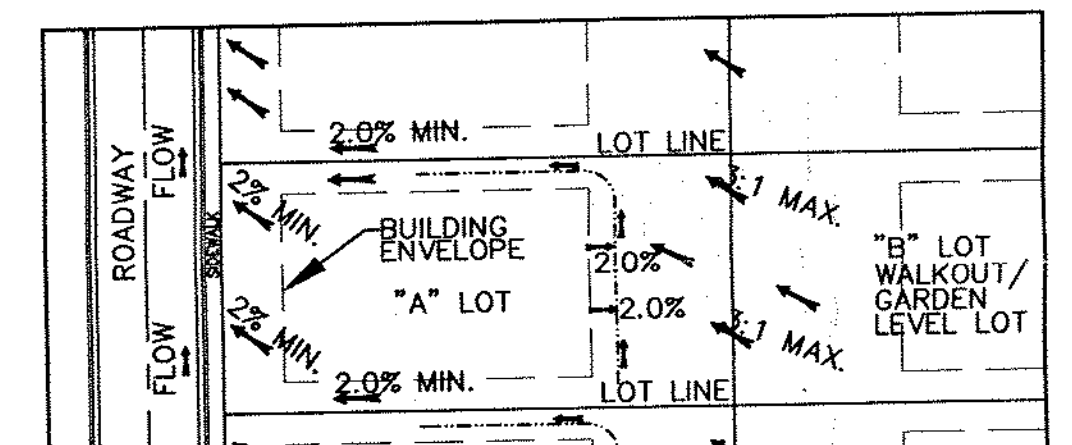
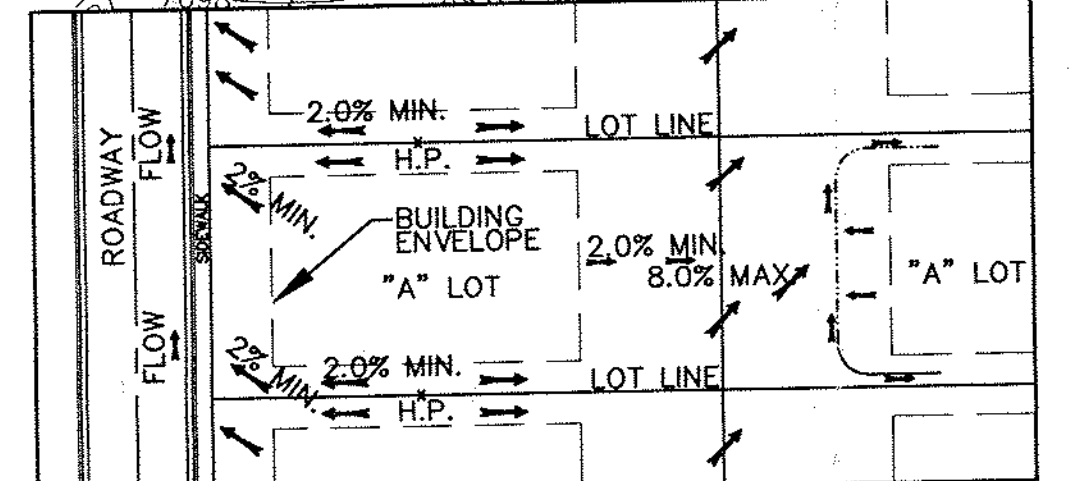
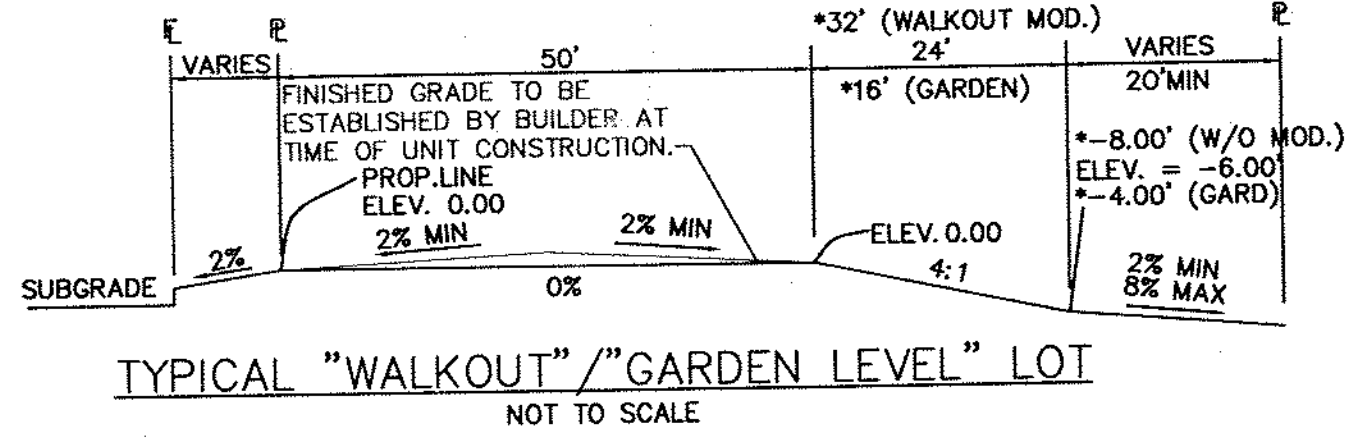
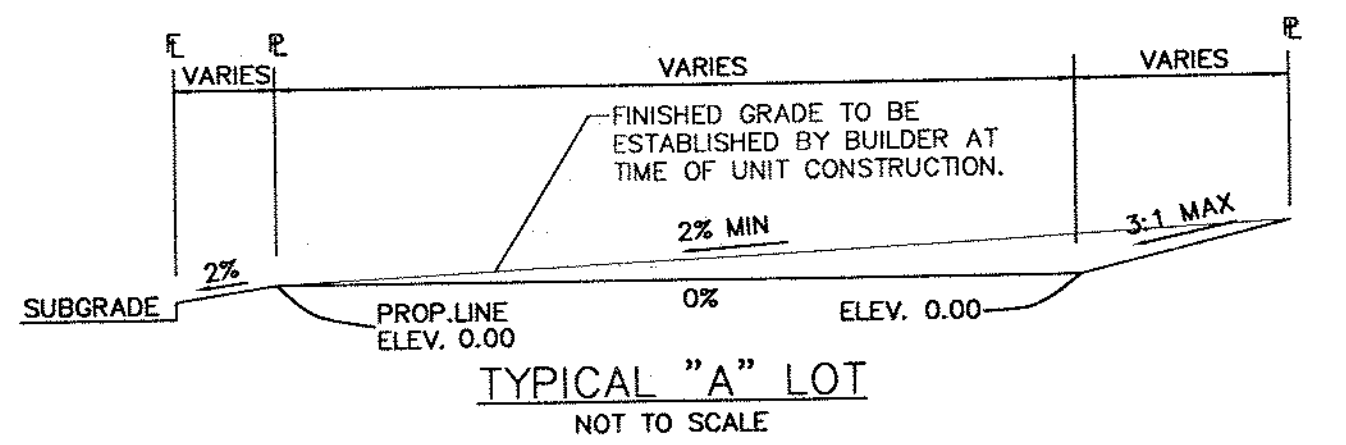
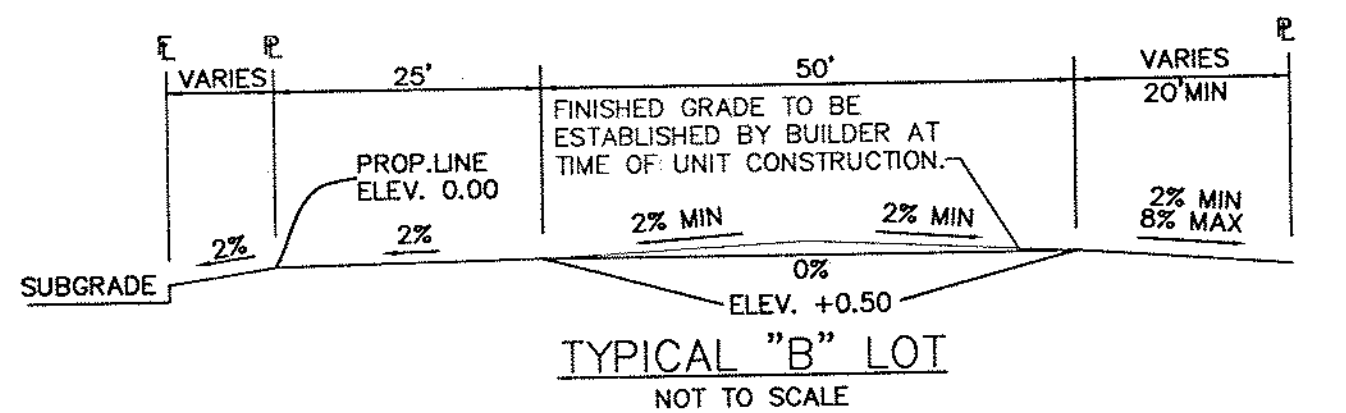
VICINITY MAP

LEGEND

- 8520 — PROPOSED CONTOUR
- 8520 — EXISTING CONTOUR
- — PROPOSED STORM DRAIN PIPE
- — EXISTING STORM DRAIN PIPE
- — DRAINAGE DITCH
- — PROPOSED TYPE 'R' INLET
- — PROPOSED TYPE I OR II MANHOLE
- — PROPOSED FLOW DIRECTION ARROW
- ▲ DESIGN POINT
- ▲ 5-YEAR STORM EVENT PEAK FLOW (CFS)
- ▲ 100-YEAR STORM EVENT PEAK FLOW (CFS)
- ▲ BASIN DESIGNATION
- ▲ "C" COEFFICIENT (100 YR)
- ▲ BASIN AREA (ACRES)
- — FILING LIMITS
- — DRAINAGE BASIN BOUNDARY

PINE CREEK SUMMARY TABLE

DESIGN POINT ID	Q(5) (CFS)	Q(100) (CFS)	SUB-BASINS
P4	8.5	86.4	PINT1
P10	13.1	103.0	P4, PF9C
P11	20.0	115.4	P1, P2, PF1E, PF2C
P12	26.7	131.4	P3, P8, PF2A, PF2B, PF7A, PF8B
P13 (FUT)	50.4	133.2	
P14	40.2	237.4	PINT2, PF3B, PF4A



Matrix Design Group, Inc.
Integrated Design Solutions 2925 Professional Place, Suite 202
Colorado Springs, CO 80904
Phone 719-575-0100
Fax 719-575-0208

CORDERA FILING NO. 2A

DRAINAGE REPORT

INTERIM DRAINAGE MAP
FILING NO. 2A INFRASTRUCTURE

DESIGNED BY: RGC	SCALE: 1"=100'	DATE ISSUED: NOVEMBER 2005	SHT DP03
DRAWN BY: BPK	HORIZ: N/A	SHEET NO. 3 OF 3 SHEETS	
CHECKED BY:	VERT: N/A		