

VICINITY MAP:  
N.T.S.

SUB-BASIN DATA SUMMARY  
EXISTING CONDITIONS

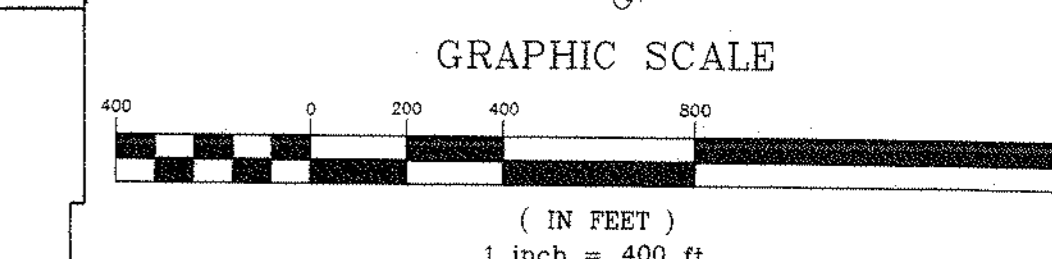
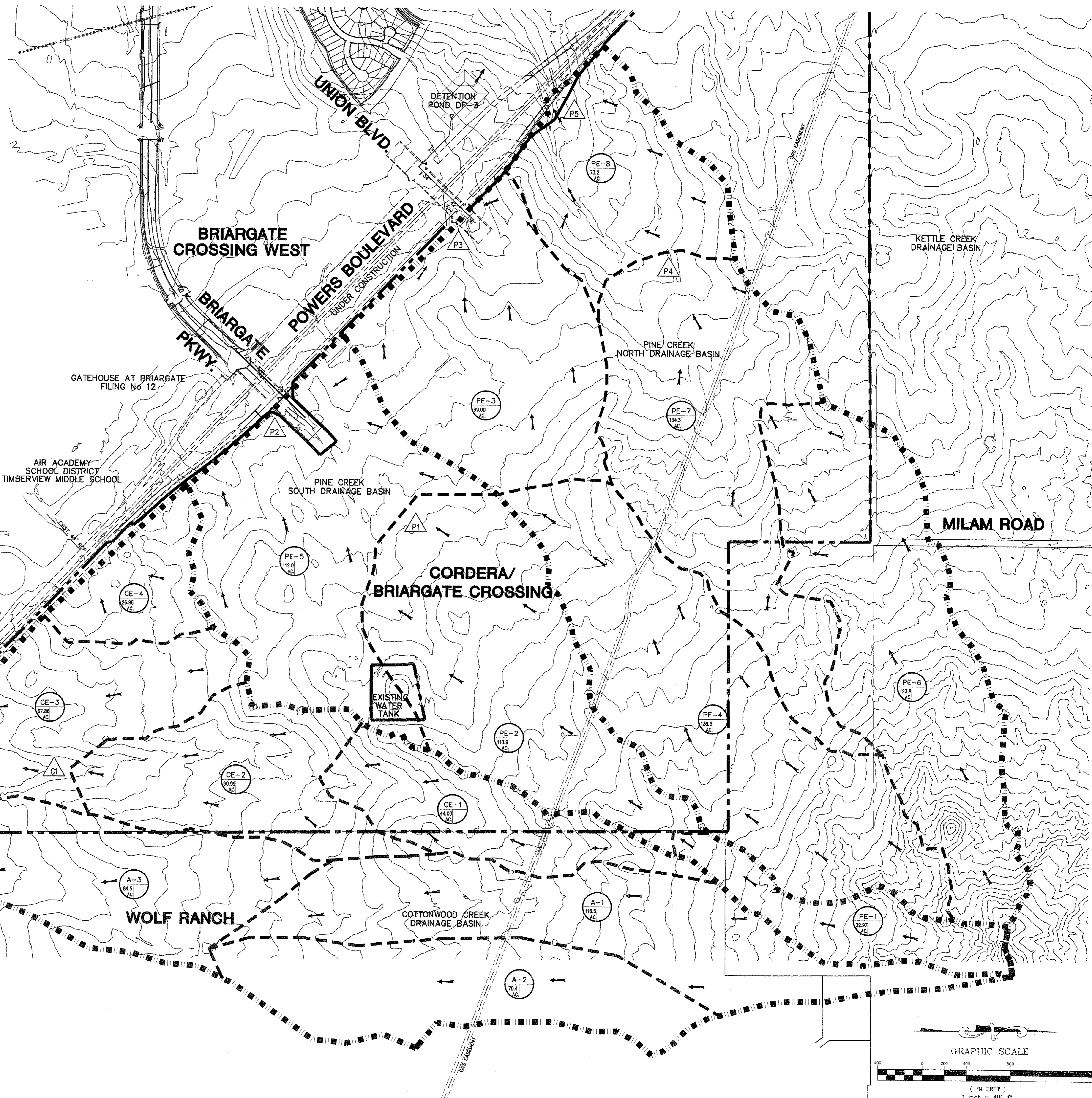
BASIN ID	AREA (AC)	PEAK RUNOFF	
		Q(5) (CFS)	Q(100) (CFS)
CE1	44.00	5.3	37.8
CE2	60.99	8.7	60.3
CE3	67.86	7.5	53.5
CE4	26.96	4.2	28.8
A1	116.50	13.5	86.3
A2	76.40	9.5	67.6
A3	84.50	11.8	82.8
PE1	32.97	4.3	30.5
PE2	110.31	13.8	98.5
PE3	99.00	9.0	63.4
PE4	139.45	14.4	102.5
PE5	111.99	15.9	110.7
PE6	123.75	24.1	151.0
PE7	134.33	14.5	103.4
PE8	73.75	8.6	61.3

SUB-BASIN DATA SUMMARY  
EXISTING CONDITIONS

DESIGN POINT	PEAK RUNOFF	
	Q(5) (CFS)	Q(100) (CFS)
C1	9.8	65.5
C2	16.2	138.0
C3	42.0	362.9
DPA	27.4	225.6
P1	13.9	119.0
P2	34.9	291.0
P3	9.0	63.4
P4	38.0	244.9
P5	45.7	304.2

LEGEND

- FILING LIMITS
- - - DRAINAGE BASIN BOUNDARY
- PROPOSED CONTOUR
- EXISTING CONTOUR
- PROPOSED STORM DRAIN PIPE
- EXISTING STORM DRAIN PIPE
- DRAINAGE CHANNEL
- PROPOSED TYPE 'R' INLET
- PROPOSED TYPE I OR II MANHOLE
- PROPOSED FLOW DIRECTION ARROW
- △ DESIGN POINT
- TAG DESIGN SEGMENT
- BASIN DESIGNATION
- "C" COEFFICIENT (100 YR)
- BASIN AREA (ACRES)



NO.	DATE	DESCRIPTION	BY
REVISIONS			
BENCHMARK DATA (ELEV.)			6975.68
(DATUM) ASSUMED			
(DESCRIPTION/LOCATION) OF BRIARGATE PKWY AND BRAINARD DR			

NAME: S:\03104.015\dwg\Prelim\STRM-RAIN\DP03.dwg  
 PDP: Matrix.ctb  
 PLOT DATE: Nov 09, 2004 3:53pm

FOR AND ON BEHALF OF  
MATRIX DESIGN GROUP, INC.

**Matrix Design Group, Inc.**  
 Integrated Design Solutions 2925 Professional Place, Suite 202  
 Colorado Springs, CO 80904  
 Phone 719-575-0100  
 Fax 719-575-0208

**CORDERA FILING NO. 1**  
**DRAINAGE REPORT**  
**EXISTING DRAINAGE MAP**

DESIGNED BY: RGD SCALE: 1"=400' DATE ISSUED: NOV 2003  
 DRAWN BY: BPK HORIZ: N/A SHEET NO. 3 OF 4 SHEETS  
 CHECKED BY: N/A VERT: N/A

DP03