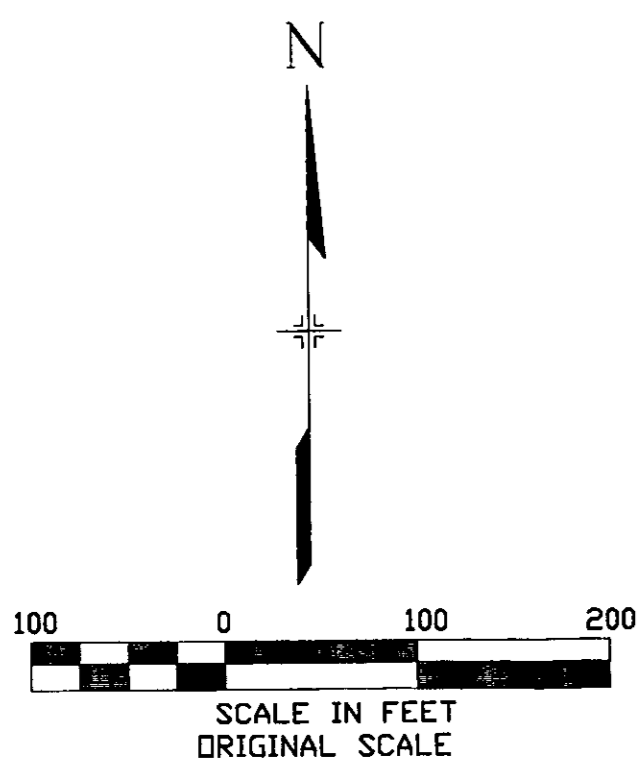


VICINITY MAP
NORTH
NTS

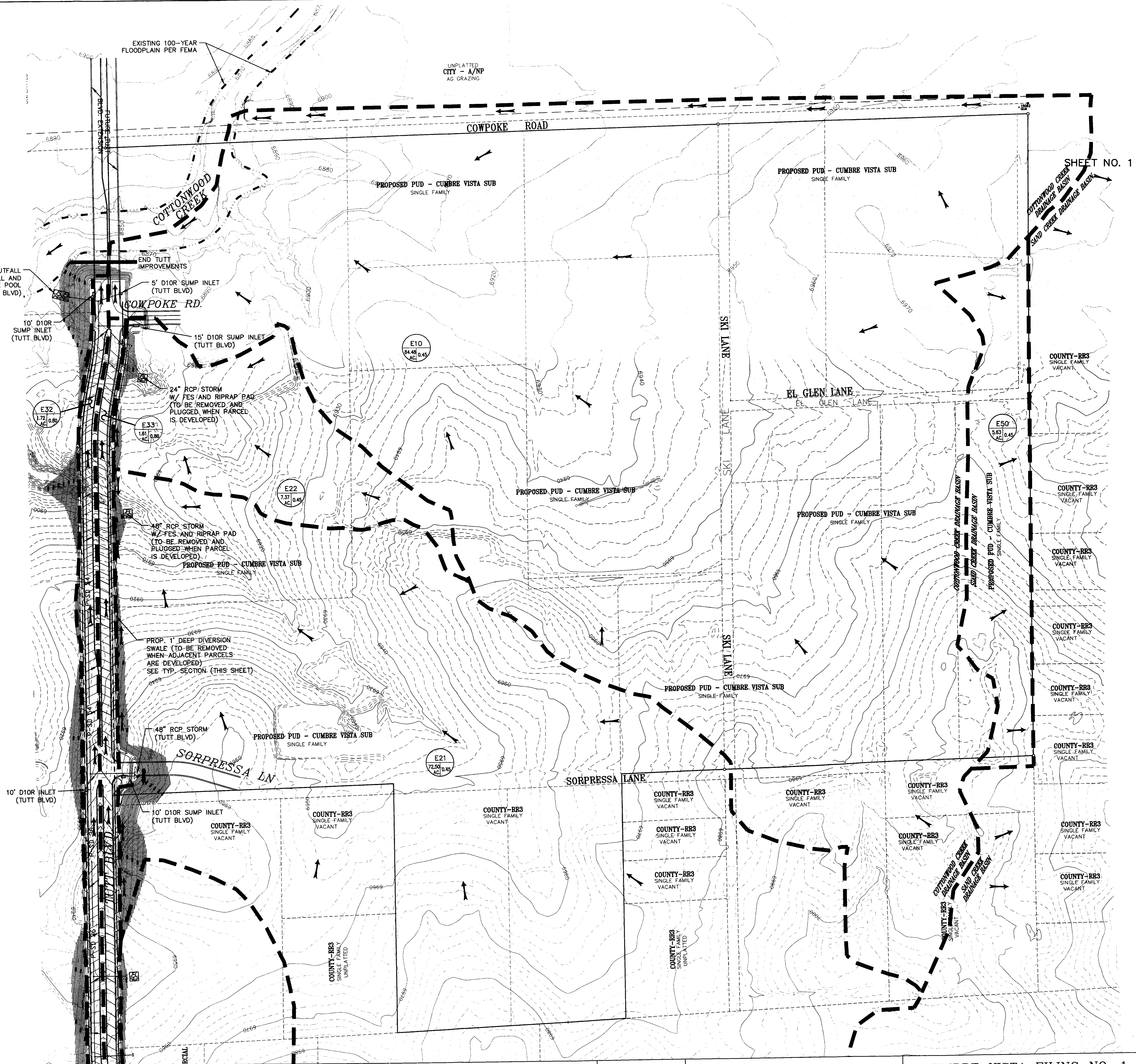
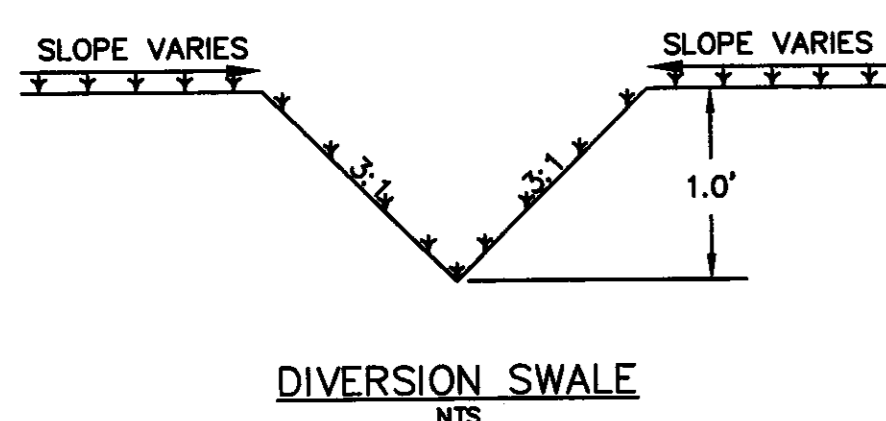
LEGEND

- RIGHT OF WAY
- DRAINAGE BASIN BOUNDARY
- PROPOSED CONTOUR
- EXISTING CONTOUR
- PROPOSED STORM SEWER W/ SIZE OF PIPE
- 100-YEAR FLOODPLAIN
- PROPOSED D10R INLET
- PROPOSED MANHOLE
- PROPOSED FLOW DIRECTION ARROW
- DESIGN POINT
- BASIN DESIGNATION
- "C" COEFFICIENT (100 YR)
- BASIN AREA (ACRES)



SUB-BASIN DATA SUMMARY

BASIN ID	AREA	Q ₅ (cfs)	Q ₁₀₀ (cfs)
E10	84.48	61.5	164.3
E21	72.50	55.2	147.3
E22	7.37	7.3	19.4
E32	1.72	4.3	8.8
E33	1.61	4.0	8.2
E50	5.63	6.2	16.5



SHEET NO. 1

NO.	DATE	DESCRIPTION	BY
REVISIONS			
BENCHMARK DATA (ELEV.)			
(DATUM)			
(DESCRIPTION/LOCATION)			

NAME: S:\05185\001(Powerwood)\dwg\Drainage\DR01.dwg	
PCP: Matrix.cib	
PLOT DATE: Jul 21, 2005 11:09am	

Matrix Design Group, Inc.
Integrated Design Solutions
2925 Professional Place, Suite 202
Colorado Springs, CO 80904
Phone 719-575-0100
Fax 719-575-0208

CUMBRE VISTA FILING NO. 1
PRELIMINARY/FINAL DRAINAGE REPORT
EXISTING CONDITIONS
DRAINAGE MAP

DESIGNED BY: RGC	SCALE: 1"=100'	DATE ISSUED: APRIL 2005	DP01
DRAWN BY: RGC	HORIZ: N/A	SHEET NO. 1 OF 3 SHEETS	
CHECKED BY: RGC	VERT: N/A		

X=STORM
X=PP-DRAINING
X=STORM

FOR AND ON BEHALF OF
MATRIX DESIGN GROUP, INC.