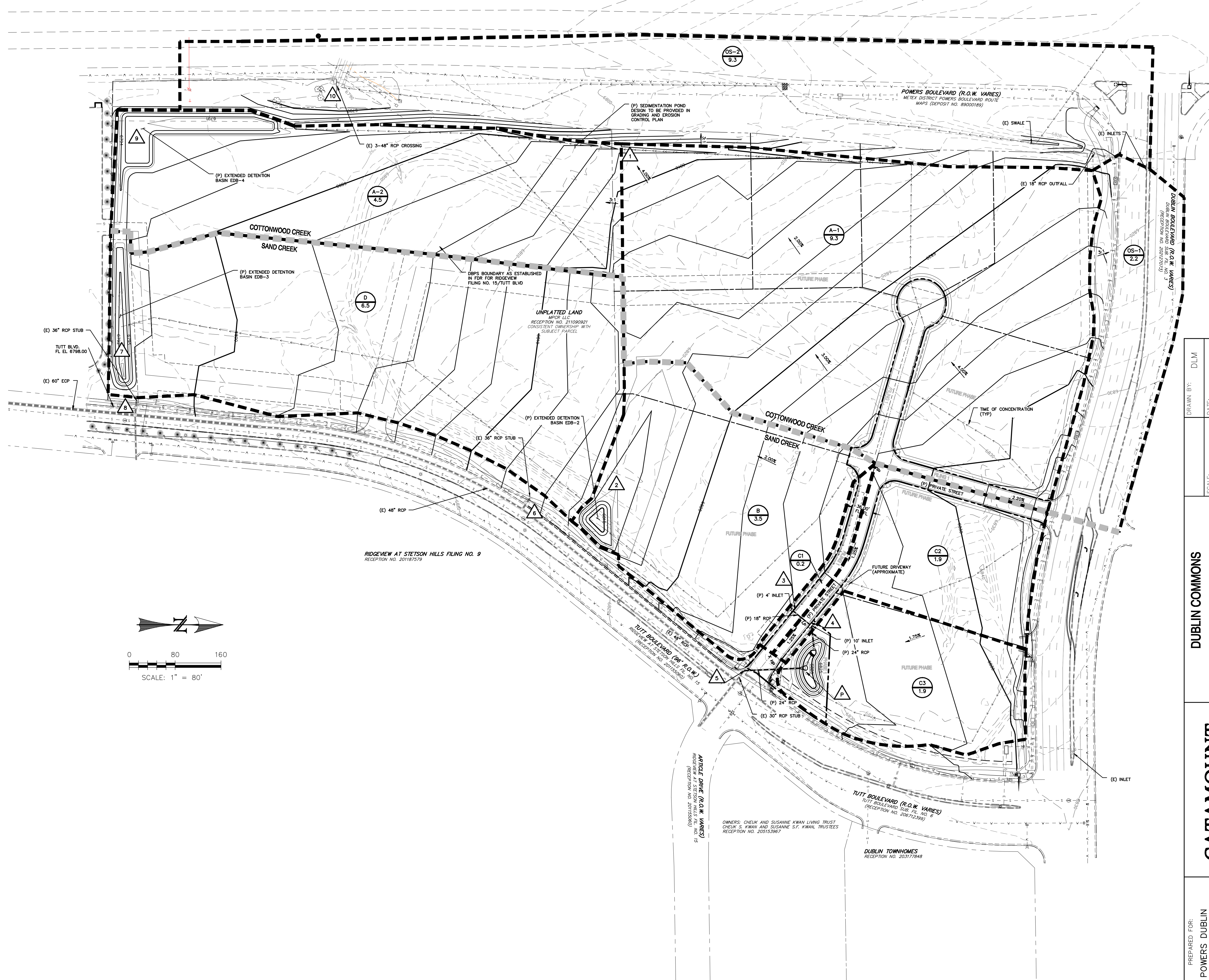
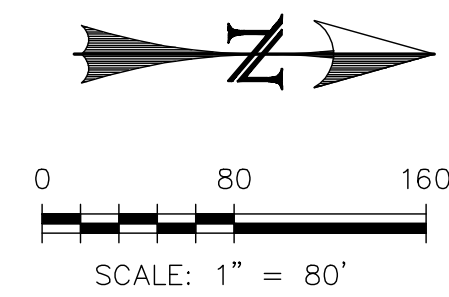


BASIN	Q5 [CFS]	Q100 [CFS]
A1	24	42
A2	14	27
B	12	23
C1	1	2
C2	9	15
C3	9	15
D	20	38
OS-1	7	14
OS-2	12	27

DESIGN POINT	Q5 [CFS]	Q100 [CFS]
1	24	42
2	12	23
3	1	2
4	9	16
P	18	32
5	1	17
6	8	21
7	20	38
8	9	28
9	33	65
10	25	58

DRAINAGE LEGEND

- BASIN IDENTIFIER F
- BASIN AREA [AC] 0.36
- DESIGN POINT IDENTIFIERS 1
- DRAINAGE BASIN BOUNDARY
- SURFACE SHEET FLOW DIRECTION
- EXISTING MAJOR CONTOUR (10')
- EXISTING MINOR CONTOUR (2')
- PROPOSED MAJOR CONTOUR (10')
- PROPOSED MINOR CONTOUR (2')
- EXISTING (E)
- PROPOSED (P)
- FUTURE (F)
- SLOPE/DIRECTION 1.00%
- (E) STORM SEWER
- (P) STORM SEWER, INLET, OUTFALL



DRAWN BY: DLM DATE: 05/15/13 SCALE: 1" = 60' JOB NUMBER: 12-025	SHEET: 1 OF 1 DUBLIN COMMONS DRAINAGE PLAN
CATAMOUNT ENGINEERING <small>TITLE: DUBLIN COMMONS DRAINAGE PLAN DENO, CO 80811 (719) 587-0881</small>	
PREPARED FOR: POWERS, DUBLIN DEVELOPMENT COMPANY <small>102 NORTH CASCADE AVE, SUITE 610 COLORADO SPRINGS, CO 80903</small>	