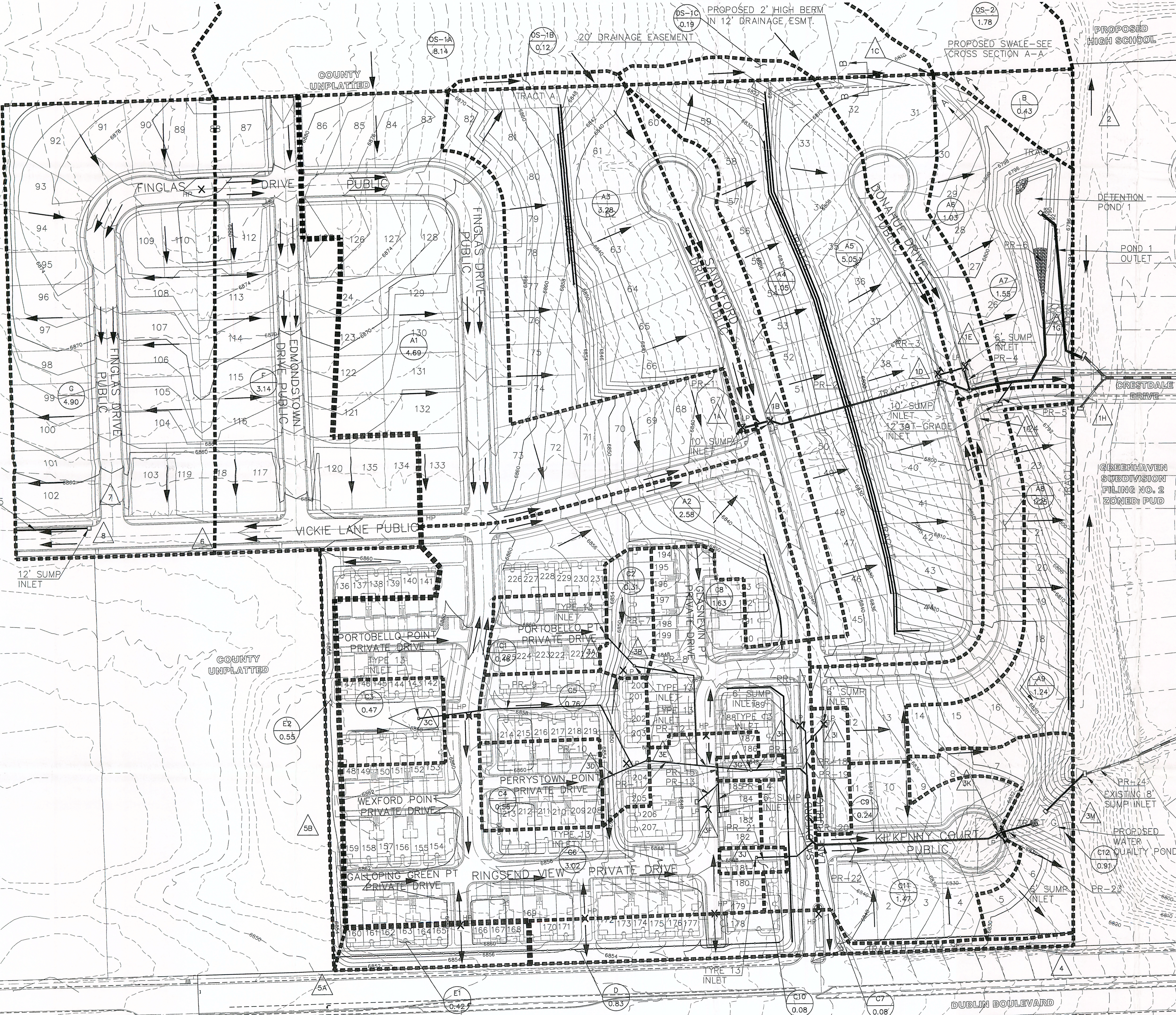
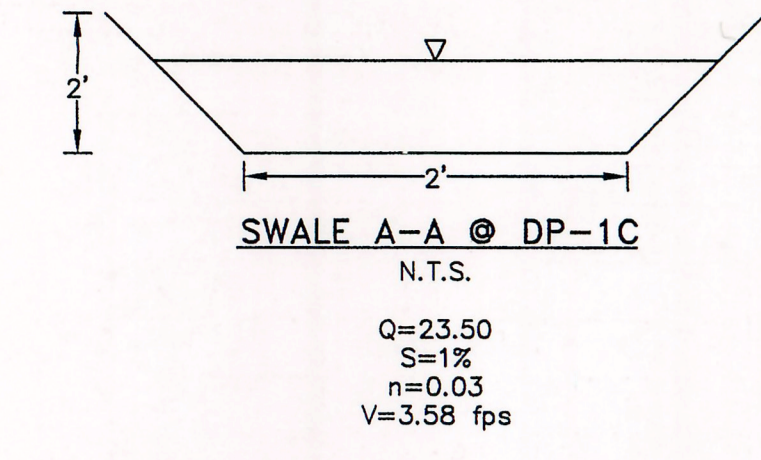
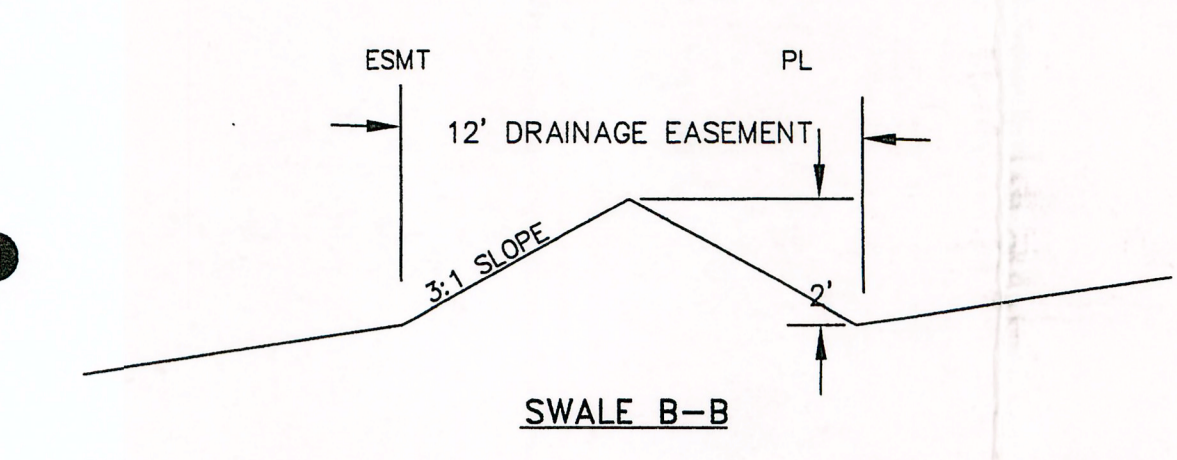


DUBLIN NORTH

CITY OF COLORADO SPRINGS

PROPOSED DRAINAGE MAP

SEPTEMBER 2006



PROPOSED BASIN SUMMARY

BASIN	ACRES	Q5 CFS	Q100 CFS
OS-1A	8.14	11.0	23.5
OS-1B	0.12	0.2	0.5
OS-1C	0.19	0.4	0.8
OS-2	1.78	5.0	9.7
A1	4.69	8.6	16.8
A2	2.58	6.5	13.2
A3	3.28	6.4	12.5
A4	1.05	2.3	4.5
A5	5.05	10.6	21.1
A6	1.03	2.2	4.4
A7	1.55	3.5	7.0
A8	1.25	2.9	5.7
A9	1.59	3.6	7.6
B	0.43	0.4	0.9
C1	0.46	1.3	2.7
C2	0.31	0.8	1.5
C3	0.47	1.2	2.6
C4	0.56	1.5	3.2
C5	0.76	1.9	3.9
C6	3.02	7.3	14.8
C7	0.08	0.2	0.4
C8	1.63	4.1	8.4
C9	0.24	0.6	1.1
C10	0.08	0.2	0.4
C11	1.38	3.3	6.6
C12	0.64	1.7	3.4
D	0.83	2.3	4.8
E1	0.42	1.3	2.7
E2	0.55	1.3	2.7
F	3.14	6.6	13.1
G	4.90	9.9	19.5

PROPOSED DESIGN POINT SUMMARY

DP	Q5 CFS	Q100 CFS
1A	19.5	37.9
1B	2.3	4.5
1A & 1B	21.4	41.7
1C	11.0	23.5
1D	10.6	21.1
1E	2.2	4.4
1F	2.9	5.7
1G	44.5	88.2
1H	3.6	7.6
2	4.5	8.5
3A	1.3	2.7
3B	0.8	1.5
3C	1.2	2.6
3D	1.5	3.2
3E	1.9	3.9
3F	7.3	14.8
3G	0.2	0.4
3H	4.1	8.4
3I	0.6	1.1
3J	0.2	0.4
3K	3.3	6.6
3M	22.4	44.9
4	2.3	4.8
5A	1.3	2.7
5B	1.3	2.7
6	6.6	13.1
7	9.9	19.5
8	16.3	32.1

PROPOSED PIPE RUN SUMMARY

PIPE RUN	SIZE	MIN. S
PR-1	24"	0.8
PR-2	30"	1.0
PR-3	24"	0.8
PR-4	30"	0.4
PR-5	18"	0.0
PR-6	42"	0.4
PR-7	18"	0.0
PR-8	18"	0.1
PR-9	18"	0.0
PR-10	18"	0.0
PR-11	18"	0.4
PR-12	24"	0.3
PR-13	18"	0.5
PR-14	18"	0.5
PR-15	24"	0.4
PR-16	30"	0.4
PR-17	18"	0.6
PR-18	18"	0.0
PR-19	18"	0.7
PR-20	30"	0.7
PR-21	18"	0.0
PR-22	30"	0.8
PR-23	30"	0.9
PR-24	EXIST. 30"	2.2
PR-25	30"	0.6
POND 1	48"	0.2

