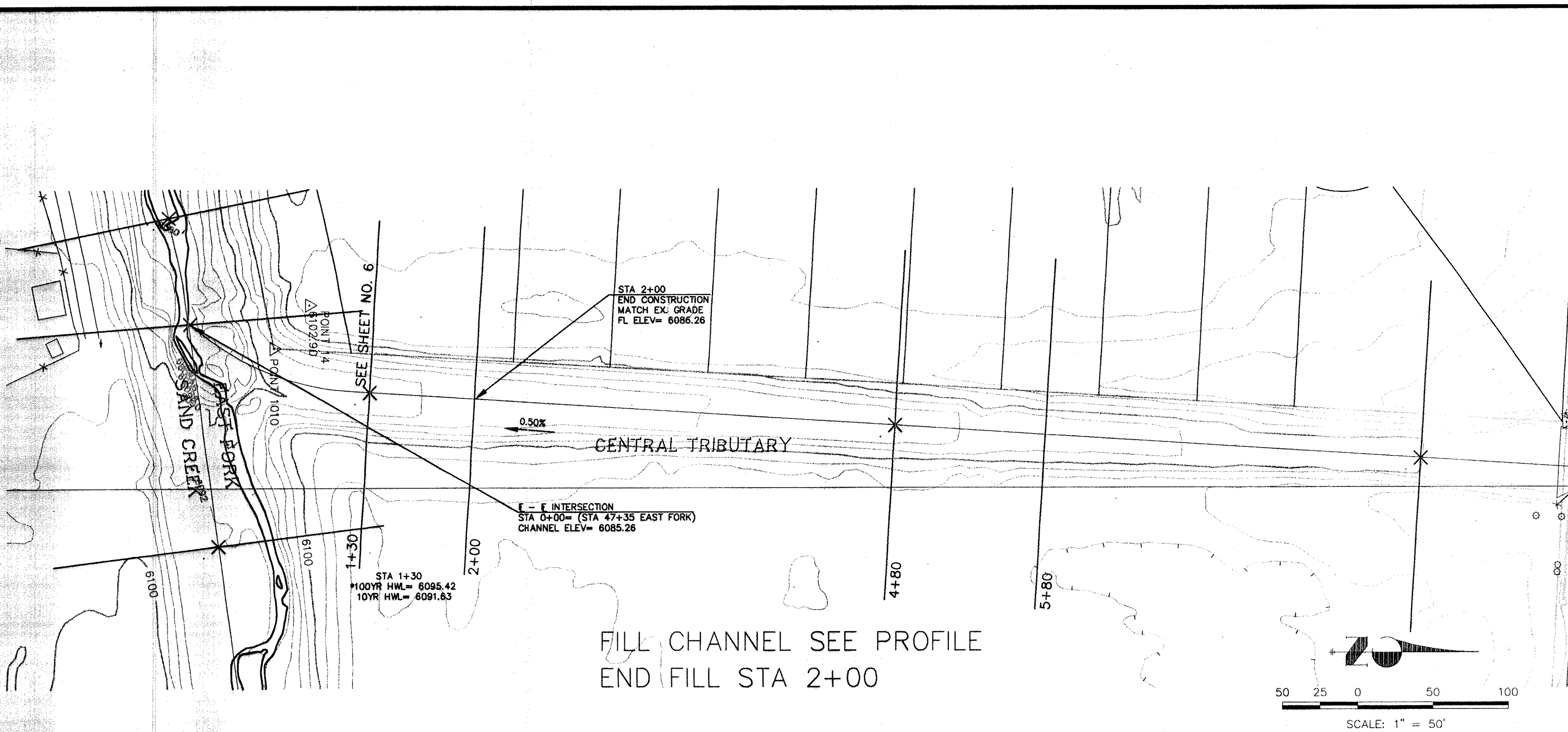
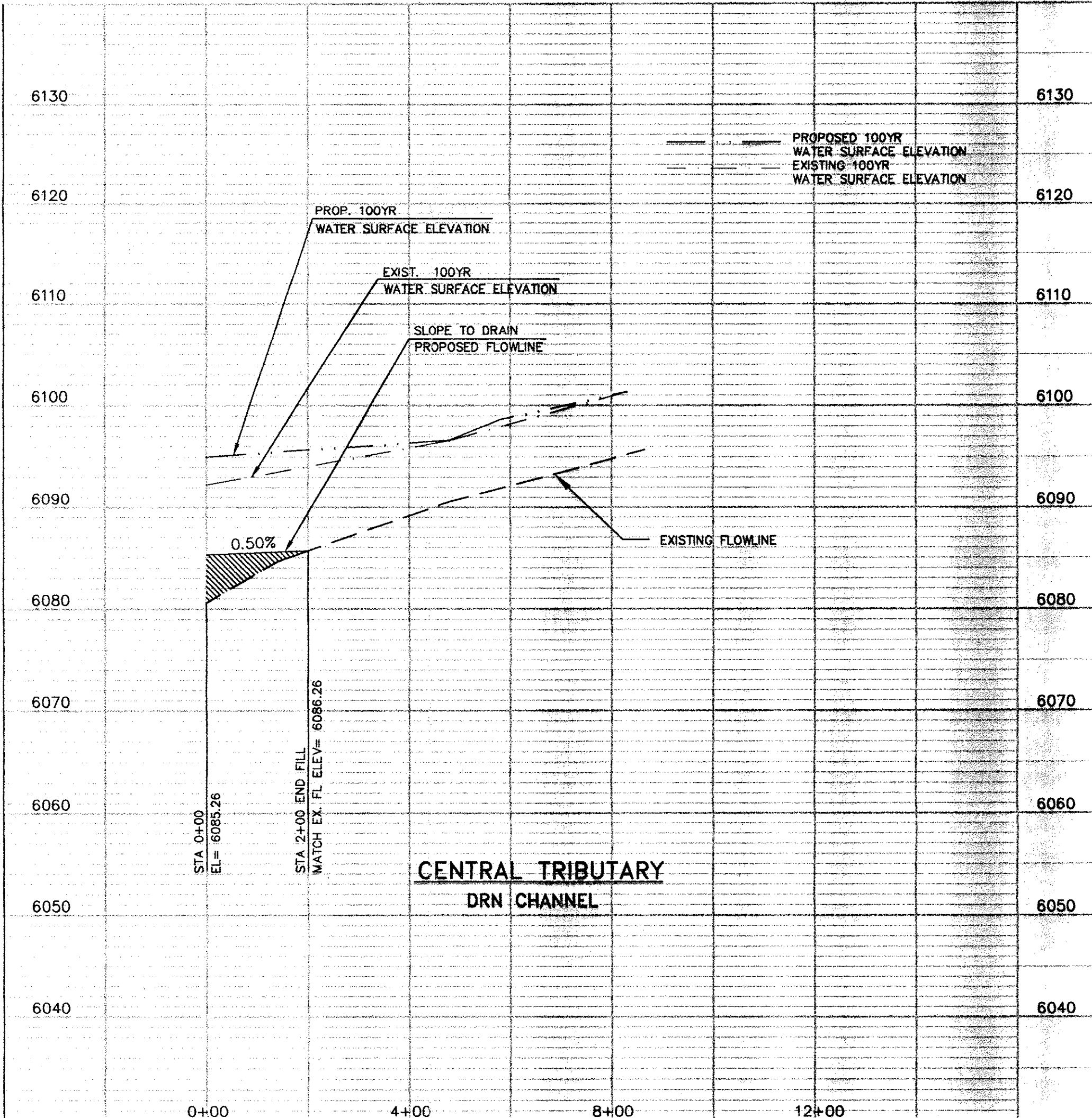
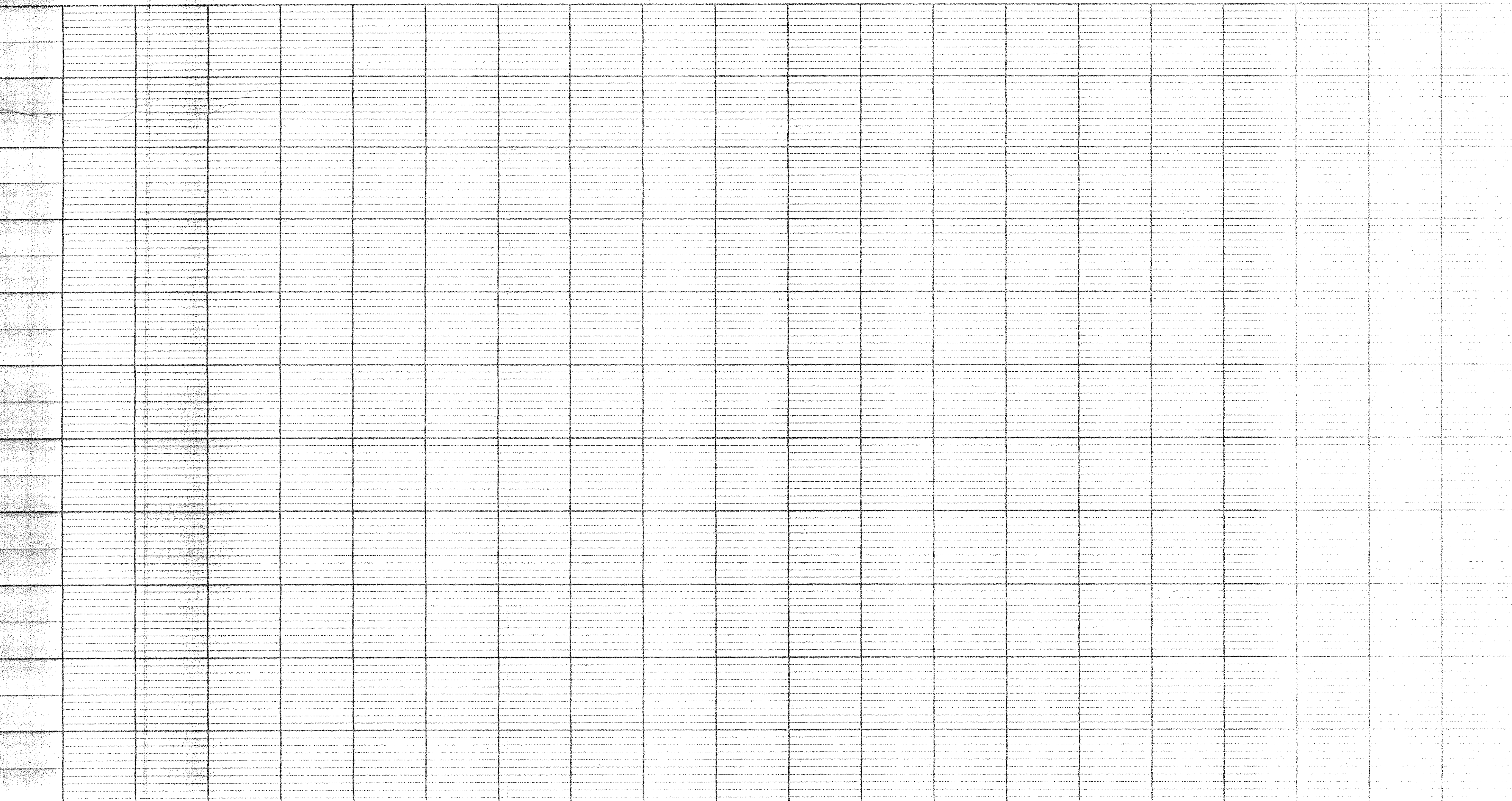


FILENAME: HECKASL.DWG DATE: 3/17/99 XREFS: 863107C.DWG, 863104H.DWG



FILL CHANNEL SEE PROFILE
END FILL STA 2+00



STATEMENT:
THE CITY OF COLORADO SPRINGS RECOGNIZES THE DESIGN ENGINEER AS HAVING RESPONSIBILITY FOR THE DESIGN; THE CITY HAS LIMITED ITS SCOPE OF REVIEW ACCORDINGLY.
RESUBMITTAL REQUIRED IF CONSTRUCTION HAS NOT COMMENCED WITHIN 180 DAYS AFTER REVIEW DATE.

DRAINAGE DESIGN : DRAINAGE BASIN SAND CREEK
FILED IN ACCORDANCE WITH SECTION 15-3-906 OF COLORADO SPRINGS 1980, AS AMENDED
DATE _____

BENCHMARKS:
A. TRAVERSE POINT NO. 15 - CHISELED "X" IN TOP OF CONCRETE PAD AT WEST SIDE OF BRIDGE ON SOUTH SIDE OF AIRPORT ROAD APPROXIMATELY 1300 FEET EAST OF SAND CREEK DRIVE 2 FEET SOUTH OF TOP BACK OF CURB. ELEVATION 6108.42
B. TRAVERSE POINT NO. 18 - NO. 5 REBAR ON NORTH SIDE OF AIRPORT ROAD APPROXIMATELY 125 FEET EAST OF KARR ROAD 4 FEET NORTH OF TOP BACK OF CURB ELEVATION 6101.34

PREPARED UNDER MY DIRECT SUPERVISION FOR AND ON BEHALF OF JR ENGINEERING, LTD.
Mike A. Bramlett
MIKE A BRAMLETT, COLORADO P.E. #32314
DATE 3-26-99

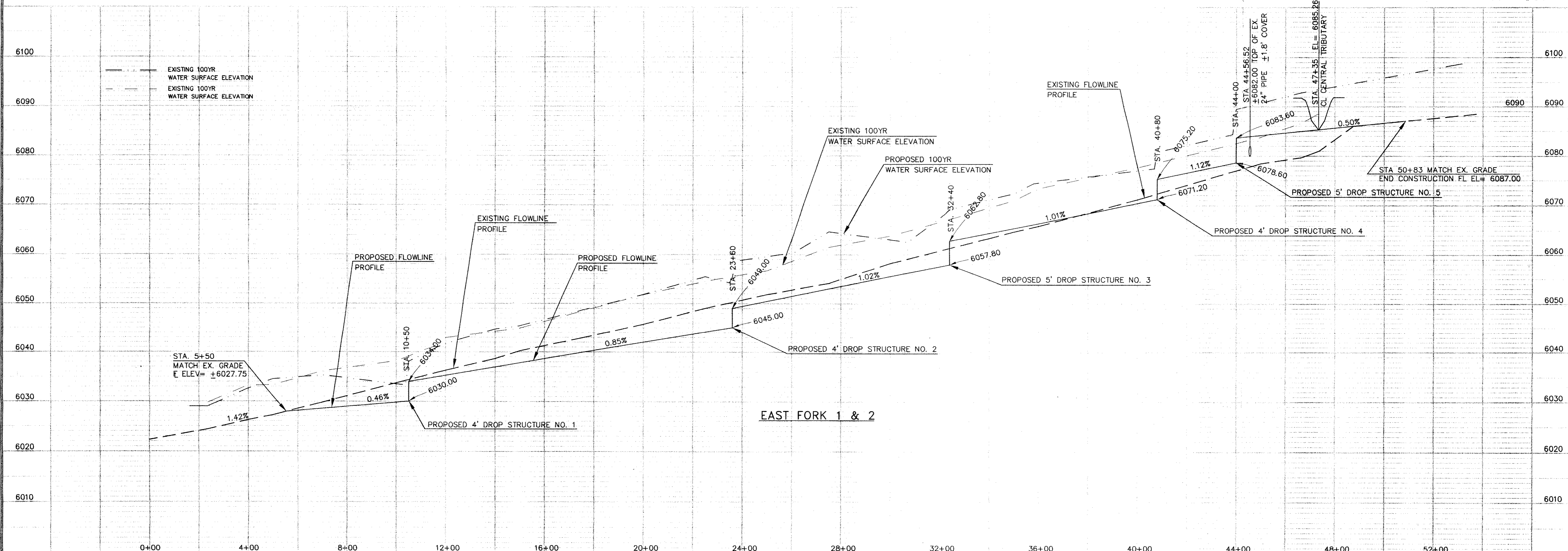
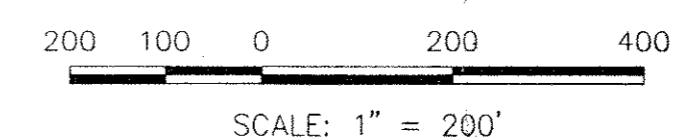
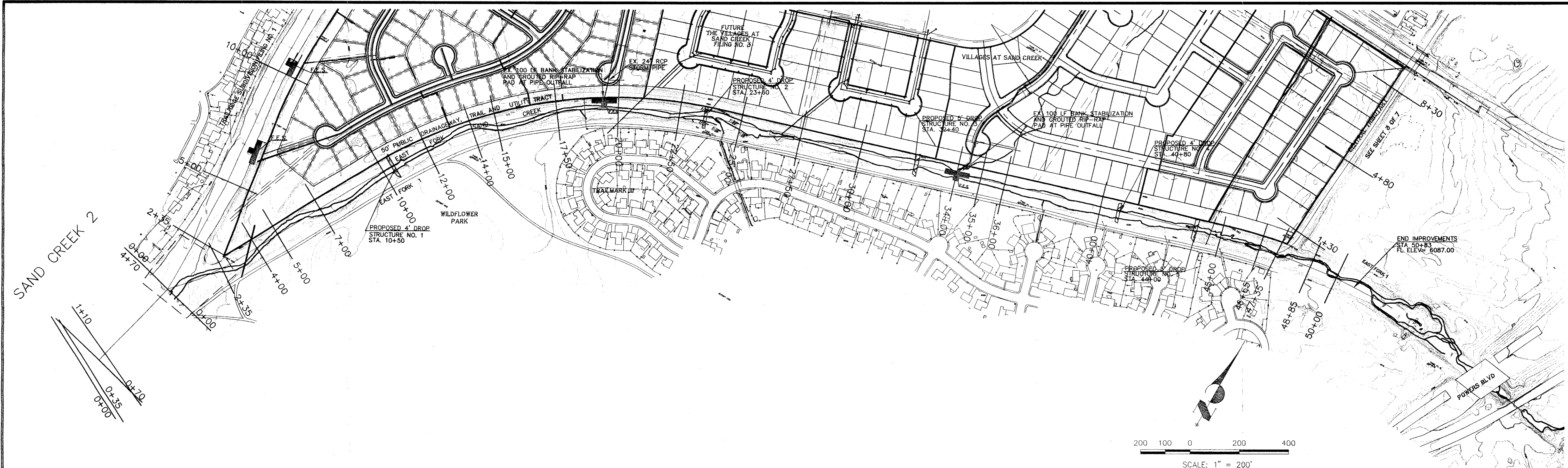
UNTIL SUCH TIME AS THESE DRAWINGS ARE APPROVED BY THE APPROPRIATE REVIEWING AGENCIES THEIR USE ONLY FOR THE PURPOSES DESIGNATED BY WRITTEN AUTHORIZATION.

48 HOURS BEFORE YOU DIG,
CALL UTILITY LOCATORS
1-800-922-1987
CITY OF COLORADO SPRINGS DEPT. OF UTILITIES
GAS, ELECTRIC, WATER AND WASTEWATER

JR Engineering, Ltd.
4835 North 30th Street
Colorado Springs, Colorado 80919
(719) 595-2583 • FAX (719) 598-6613

SCALE	DATE	DES. BY	CHK. BY	DWN. BY	NO.	REVISIONS PER CITY REVIEW	BY	DATE
VILLAGES AT SAND CREEK EAST FORK	2/3/99	LDR			1		RAL	3/17/99
SAND CREEK CHANNEL IMPROVEMENTS								
CENTRAL TRIBUTARY PLAN AND PROFILE								

SHEET 3 OF 7
JOB NO. 8631.07



STATEMENT:
 THE CITY OF COLORADO SPRINGS RECOGNIZES THE DESIGN ENGINEER AS HAVING RESPONSIBILITY FOR THE DESIGN; THE CITY HAS LIMITED ITS SCOPE OF REVIEW ACCORDINGLY.
 RESUBMITTAL REQUIRED IF CONSTRUCTION HAS NOT COMMENCED WITHIN 180 DAYS AFTER REVIEW DATE.

DRAINAGE DESIGN : DRAINAGE BASIN SAND CREEK
 FILED IN ACCORDANCE WITH SECTION 15-3-906 OF COLORADO SPRINGS 1980, AS AMENDED
 DATE _____

BENCHMARKS:
 A. TRAVERSE POINT NO. 15 - CHISELED "X" IN TOP OF CONCRETE PAD AT WEST SIDE OF BRIDGE ON SOUTH SIDE OF AIRPORT ROAD APPROXIMATELY 1300 FEET EAST OF SAND CREEK DRIVE 2 FEET SOUTH OF TOP BACK OF CURB. ELEVATION 6108.42
 B. TRAVERSE POINT NO. 18 - NO. 5 REBAR ON NORTH SIDE OF AIRPORT ROAD APPROXIMATELY 125 FEET EAST OF KARR ROAD 4 FEET NORTH OF TOP BACK OF CURB. ELEVATION 6101.34

PREPARED UNDER MY DIRECT SUPERVISION FOR AND ON BEHALF OF JR ENGINEERING, LTD.
Mike A Bramlett
 MIKE A BRAMLETT, COLORADO P.E. #32314
 DATE 3-26-99

UNTIL SUCH TIME AS THESE DRAWINGS ARE APPROVED BY THE APPROPRIATE REVIEWING AGENCIES, JR ENGINEERING, LTD. IS NOT RESPONSIBLE FOR THE PURPOSES DESIGNATED BY WRITTEN AUTHORIZATION.

48 HOURS BEFORE YOU DIG,
 CALL UTILITY LOCATORS
1-800-922-1987
 CITY OF COLORADO SPRINGS DEPT. OF UTILITIES
 GAS, ELECTRIC, WATER, AND WASTEWATER

JR Engineering, Ltd.
 4835 North 30th Street
 Colorado Springs, Colorado 80919
 (719) 593-8583 • FAX (719) 593-6613

NO.	REVISION	DATE	BY
1	REVISION PER CITY REVIEW	3/17/99	RAL

SCALE	DATE	DES. BY	CHK. BY	DWN. BY
1"=200'	2/3/99	LDR		RAL

VILLAGES AT SAND CREEK
 EAST FORK
 SAND CREEK CHANNEL IMPROVEMENTS
 EAST FORK 1 & EAST FORK 2
 PLAN AND PROFILE

SHEET 4 OF 7
 JOB NO. 8631.07