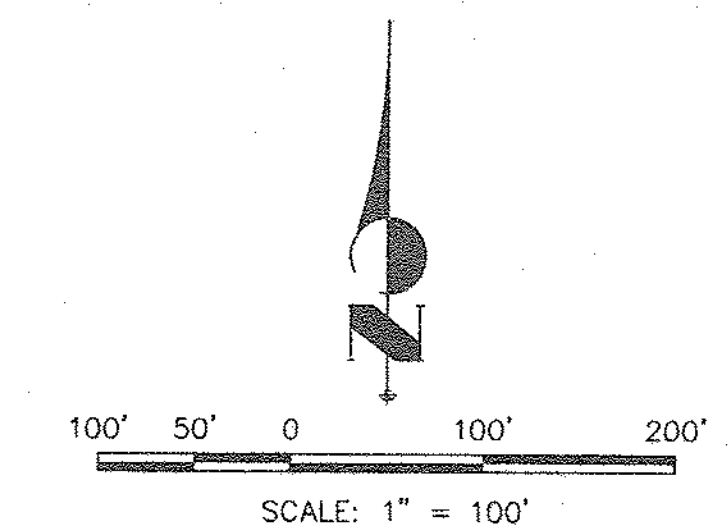
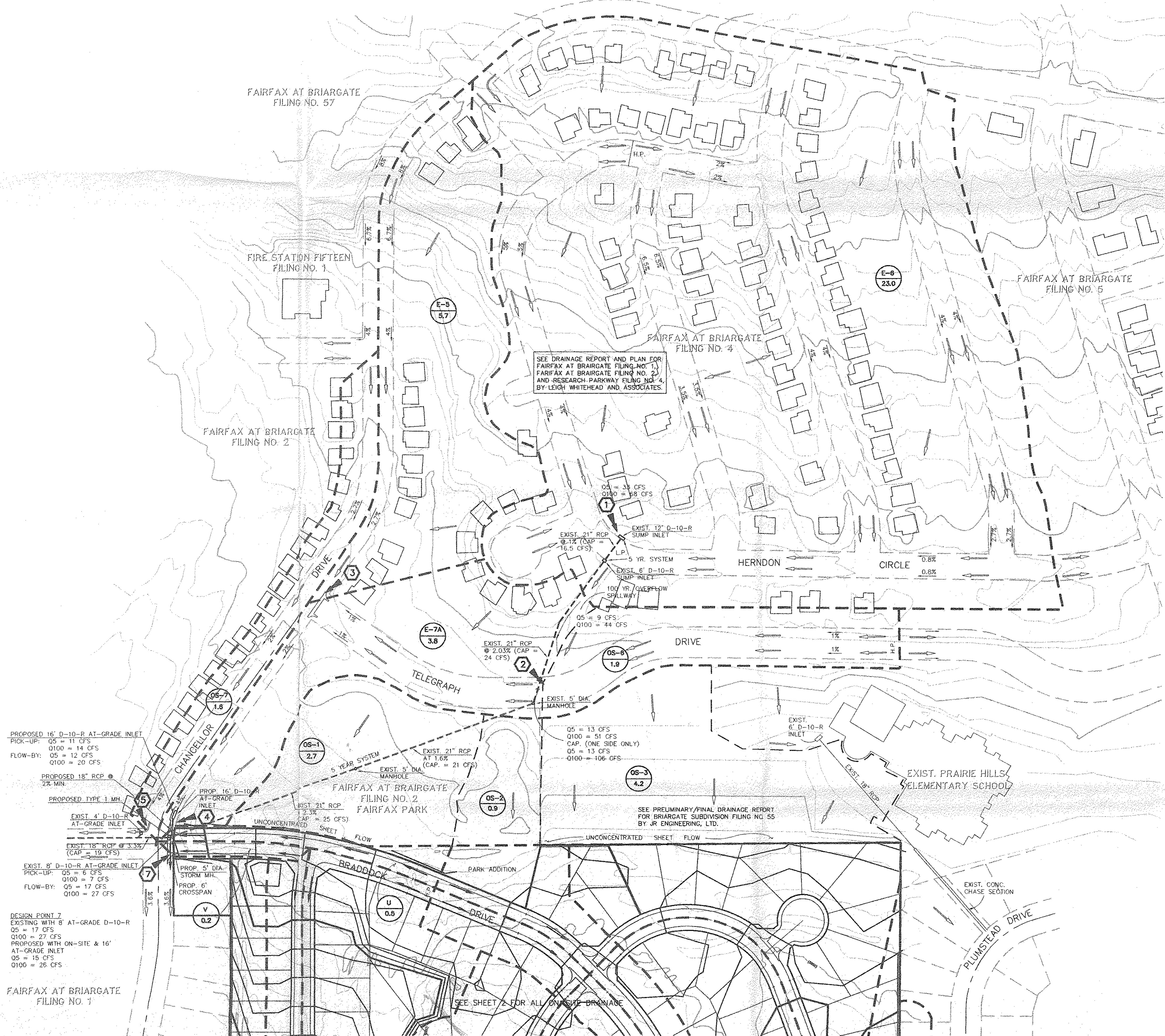


FAIRFAX AT BRIARGATE  
FILING NO. 16



**NOTES:**  
THIS MAP IS TO BE USED FOR DRAINAGE PURPOSES ONLY.  
SEE GRADING PLAN FOR APPROPRIATE GRADING  
INFORMATION.

DESIGN POINT	FLOW (CFS)
①	Q5 = 33 CFS Q100 = 68 CFS
②	Q5 = 13 CFS Q100 = 51 CFS
③	Q5 = 9 CFS Q100 = 16 CFS
④	Q5 = 23 CFS Q100 = 69 CFS
⑤	Q5 = 4 CFS Q100 = 8 CFS
⑥ (TOTAL FROM PARK & ONSITE)	Q5 = 3 CFS Q100 = 7 CFS

**OFF-SITE  
BASIN SUMMARY:**

BASIN	Q(5)-CFS	Q(100)-CFS
E-5	9	18
E-6	33	68
E-7A	5	11
55-6	5	9
OS-1	2	5
OS-2	1	1
OS-3	3	8
OS-6	6	10
OS-7	4	8

SEE DRAINAGE REPORT AND PLAN FOR:  
FAIRFAX AT BRIARGATE FILING NO. 1,  
FAIRFAX AT BRIARGATE FILING NO. 2,  
AND RESEARCH PARKWAY FILING NO. 4,  
BY LEIGH WHITEHEAD AND ASSOCIATES.

SEE PRELIMINARY/FINAL DRAINAGE REPORT  
FOR BRIARGATE SUBDIVISION FILING NO. 55  
BY JR ENGINEERING, LTD.

PROPOSED 16" D-10-R AT-GRADE INLET  
PICK-UP: Q5 = 11 CFS  
Q100 = 14 CFS  
FLOW-BY: Q5 = 12 CFS  
Q100 = 20 CFS

PROPOSED 18" RCP @ 2% MIN.  
PROPOSED TYPE 1 MH

EXIST. 4" D-10-R AT-GRADE INLET  
EXIST. 18" RCP @ 3.3% (CAP. = 19 CFS)

EXIST. 8" D-10-R AT-GRADE INLET  
PICK-UP: Q5 = 6 CFS  
Q100 = 7 CFS  
FLOW-BY: Q5 = 17 CFS  
Q100 = 27 CFS

DESIGN POINT 7  
EXISTING WITH 6" AT-GRADE D-10-R  
Q5 = 17 CFS  
Q100 = 27 CFS  
PROPOSED WITH ON-SITE & 16" AT-GRADE INLET  
Q5 = 15 CFS  
Q100 = 26 CFS

FAIRFAX AT BRIARGATE  
FILING NO. 1

**LEGEND**

DESCRIPTION	SYMBOL
EXISTING GROUND CONTOUR	6910
PROPOSED FINISHED CONTOUR	6910
SUBDIVISION BOUNDARY	---
LOT LINE	---
BASIN BOUNDARY	---
DIRECTION OF DRAINAGE	→
DIRECTION OF EXISTING DRAINAGE	→
BASIN IDENTIFIER	⊙ A
AREA IN ACRES	⊙ 10.1
CROSS PAN	⊏

UNTIL SUCH TIME AS THESE  
PLANS ARE REVIEWED BY  
THE APPROPRIATE REVIEWING  
AGENCIES, OR ENGINEERING, LTD.  
FOR THE PURPOSES OF THE  
WRITTEN AUTHORIZATION.

48 HOURS BEFORE YOU DIG,  
CALL UTILITY LOCATORS  
**1-800-922-1987**  
CITY OF COLORADO SPRINGS DEPT. OF UTILITIES  
GAS, ELECTRIC, WATER AND WASTEWATER

**JR Engineering, Ltd.**  
4935 North 30th Street  
Colorado Springs, Colorado 80919  
(719) 598-2593 • FAX (719) 528-6613

FAIRFAX STATION	SCALE	DATE	DES. BY	CHK. BY	DWN. BY
MDDP	1" = 100'	6/16/95	MAW		JWP
NORTHERLY OFF-SITE DRAINAGE MAP					
SHEET 1 OF 3					
JOB NO. 8659.00					

FILENAME: 86590001.DWG DATE: 8/1/95 XREFS: 86590002, 86590003, 86590004