

FALCON TRUCKING

COUNTY OF EL PASO, STATE OF COLORADO

EXISTING DRAINAGE MAP

MAY 2021

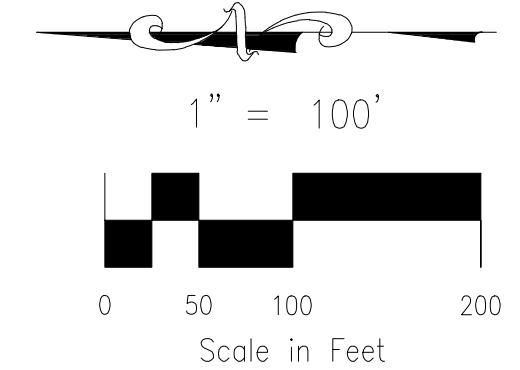


BASIN SUMMARY			
BASIN	AREA (ACRES)	Q ₅	Q ₁₀₀
A	2.37	0.6	4.4
B	8.42	2.2	16.1
C	7.53	1.8	13.0
D	2.23	0.6	4.1
E	12.97	3.1	22.5
F	8.97	2.0	15.0
G	7.78	1.5	11.3
H	0.79	0.2	1.5

DESIGN POINT SUMMARY			
DESIGN POINT	Q ₅	Q ₁₀₀	STRUCTURE
1	2.7	19.6	A, B TO MS ROW (MS CULVERT)
2	1.8	13.0	TO MS ROW (GRAPHITE CULVERT)
3	0.6	4.1	TO GRAPHITE DR ROW (W)
4	4.0	29.6	3' EARTHEN SWALE
5	4.6	33.6	DP4, G EX TYPE D INLET
6	0.2	1.5	TO GRAPHITE DR ROW (E)

LEGEND

- BASIN DESIGNATION
- SURFACE DESIGN POINT
- BASIN BOUNDARY
- EX. WATER VALVE
- EX. SANITARY MANHOLE
- EXIST MAJ CONT
- EXIST MIN CONT
- EXISTING FLOW DIRECTION ARROW
- HIGH POINT
- LOW POINT
- EXISTING ROADSIDE DITCH
- SITE BOUNDARY
- R.O.W./EASEMENT
- LOT LINE



File: C:\30007A-Falcon Trucking\Edr\Levy\Drainage\30007 Existing Drainage Map.dwg Plotstamp: 6/3/2021 10:46 AM

FOR LOCATING & MARKING GAS, ELECTRIC, WATER & TELEPHONE LINES

FOR BURIED UTILITY INFORMATION
48 HRS BEFORE YOU DIG
CALL 1-800-922-1987

20 BOULDER CRESCENT, SUITE 110
COLORADO SPRINGS, CO 80903
PHONE: 719.955.5485

FALCON TRUCKING			
EXISTING DRAINAGE MAP			
PROJECT NO:	29-007A	SCALE:	DATE: 05/20/21
DESIGNED BY:	DLM	HORIZONTAL:	1"=100'
DRAWN BY:	DLM	VERTICAL:	N/A
CHECKED BY:	VAS		
SHEET 1 OF 1			PDM

FALCON TRUCKING FILING NO. 1

COUNTY OF EL PASO, STATE OF COLORADO

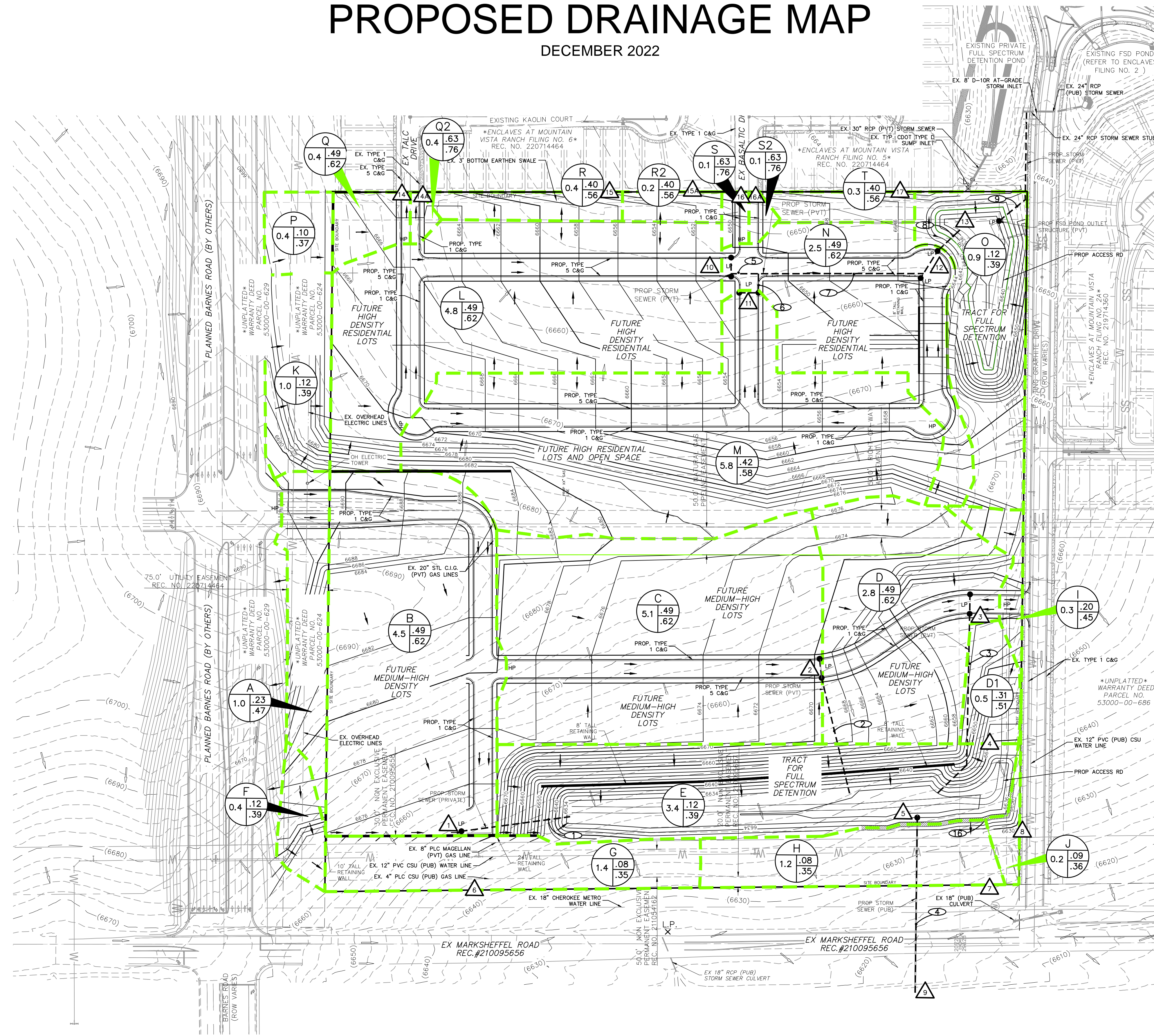
PROPOSED DRAINAGE MAP

DECEMBER 2022

BASIN SUMMARY			
BASIN	AREA (ACRES)	Q ₅	Q ₁₀₀
A	0.95	1.1	3.7
B	4.50	8.9	19.0
C	5.07	9.0	19.1
D	2.80	5.2	11.1
D1	0.46	0.6	1.6
E	3.41	1.6	9.0
F	0.37	0.2	1.0
G	1.44	0.5	3.7
H	1.22	0.4	3.0
I	0.30	0.3	1.2
J	0.17	0.1	0.4
K	0.97	0.5	2.7
L	4.76	8.6	18.2
M	5.84	11.0	25.1
N	2.49	5.0	10.7
O	0.90	0.5	2.8
P	0.41	0.2	1.1
Q	0.36	0.7	1.6
Q2	0.08	0.2	0.4
R	0.40	0.8	2.0
R2	0.22	0.5	1.1
S	0.11	0.5	0.9
S2	0.08	0.4	0.6
T	0.33	0.7	1.6

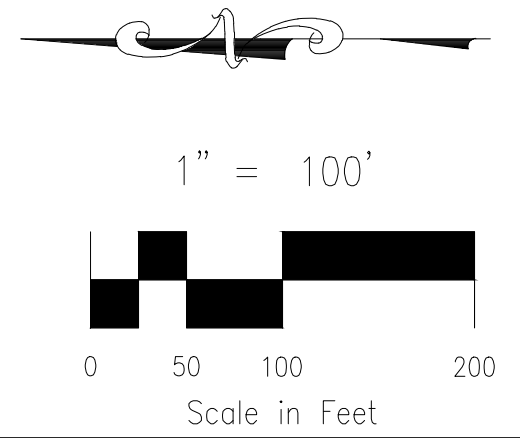
DESIGN POINT SUMMARY				
DESIGN POINT	Q ₅	Q ₁₀₀	BASIN	STRUCTURE
1	11.0	24.6	A, B	PROP 36" RCP*
2	9.0	19.1	C	PROP 30" RCP*
3	5.2	11.1	D	PROP 24" RCP*
4	0.6	1.6	D1	
5	28.5	58.0	PR1-PR3, DP4, E	FSD POND 1
6	0.7	4.5	F, G	
7	0.4	3.0	H	
8	0.4	1.5	I, J	GRAPHITE DRIVE
9	2.7	16.5	DP6, POND 1	EARTHEN SWALE
10	9.0	20.6	K, L	PROP 30" RCP*
11	11.0	25.1	M	PROP 36" RCP*
12	5.0	10.7	N	PROP 42" RCP*
13	23.0	53.2	PR8, O	FSD POND 2
14	0.9	2.6	P, Q	EX TALC DRIVE
14A	0.2	0.4	Q2	EX TALC DRIVE
15	0.8	2.0	R	FILING 6 BOUNDARY
15A	0.5	1.1	R2	FILING 6 BOUNDARY
16	0.5	0.9	S	EX BASALTIC DRIVE
16A	0.4	0.6	S2	EX BASALTIC DRIVE
17	0.7	1.6	T	FILING 5 BOUNDARY

STORM SEWER SUMMARY				
PIPE RUN	Q ₅	Q ₁₀₀	PIPE SIZE	CONTRIBUTING PIPES & DESIGN POINTS
1	11.0	24.6	36" RCP*	DP1
2	9.0	19.1	30" RCP*	DP2
3	5.2	11.1	24" RCP*	DP3
4	2.1	12.0	24" RCP*	FSD POND 1 OUTFALL
5	9.0	20.6	30" RCP*	DP10
6	11.0	25.1	36" RCP*	DP11
7	18.1	41.5	42" RCP*	PR5, PR6
8	22.6	51.0	42" RCP*	PR7, DP12
9	0.6	11.7	18" RCP*	FSD POND 2 OUTFALL



LEGEND

- BASIN DESIGNATION: Z (25 | .25 | .35) C5
- ACRES: C100
- 1: SURFACE DESIGN POINT
- : BASIN BOUNDARY
- ⊕: EX. WATER VALVE
- ⊕: EX. SANITARY MANHOLE
- - - (7070): EXIST MAJ CONT
- - - (7072): EXIST MIN CONT
- : EXISTING FLOW DIRECTION ARROW
- H.P. X: HIGH POINT
- L.P. X: LOW POINT
- : PROP STORM SEWER



File: 0:\200071-Falcon Trucking\200071-Drainage\200071-Drainage.dwg Plotstamp: 12/2/2022 10:36 AM

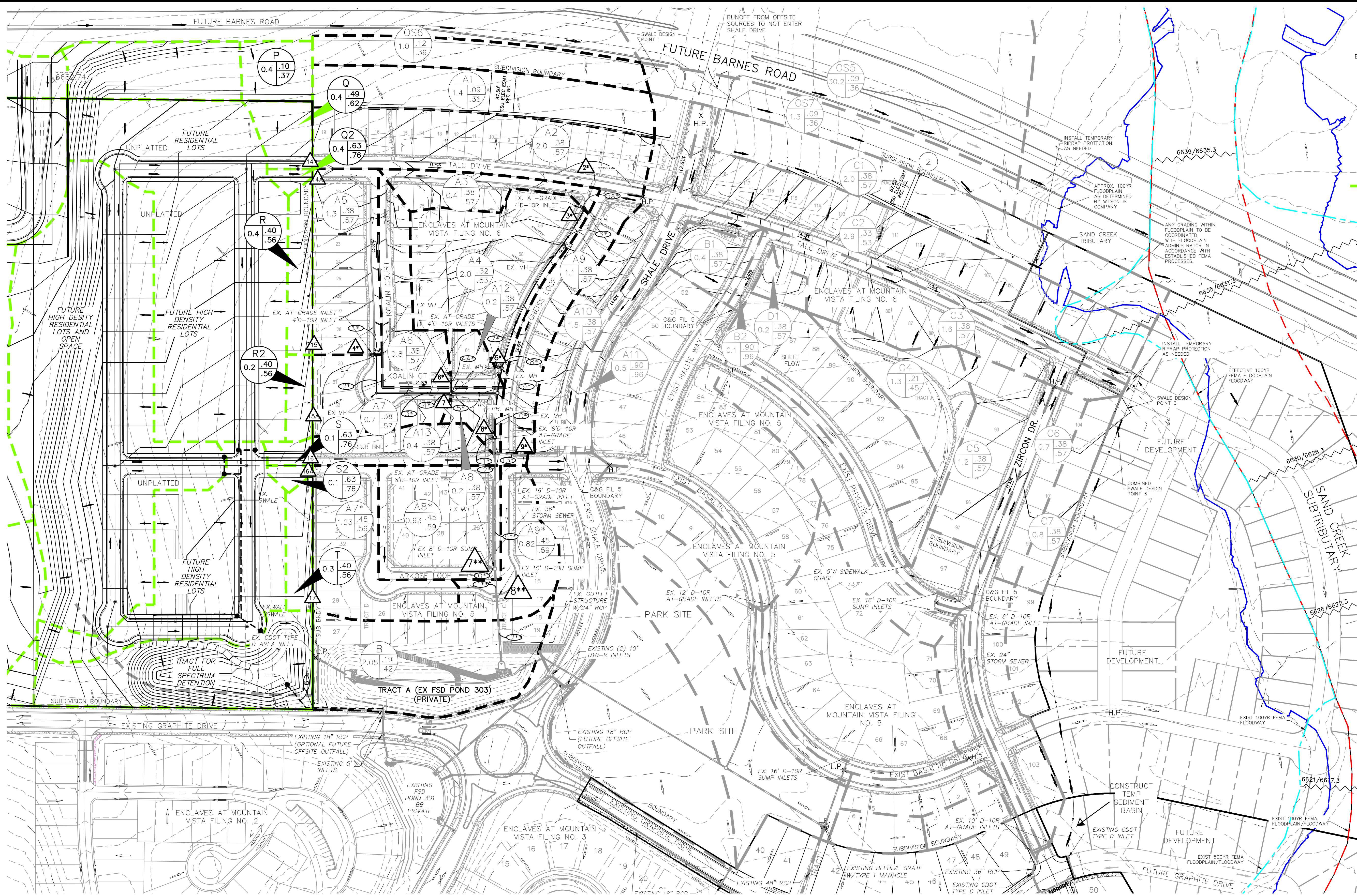
FOR LOCATING & MARKING GAS, ELECTRIC, WATER & TELEPHONE LINES

FOR BURIED UTILITY INFORMATION 48 HRS BEFORE YOU DIG CALL 1-800-922-1987

CIVIL CONSULTANTS, INC.

212 N. WAHSATCH AVE., STE 305
 COLORADO SPRINGS, CO 80903
 PHONE: 719.955.5485

FALCON TRUCKING FILING NO. 1			
PROPOSED DRAINAGE MAP			
PROJECT NO. 29-007A	SCALE: HORIZONTAL: 1"=100' VERTICAL: N/A	DATE: 12/02/22	PDM
DESIGNED BY: CWV	DRAWN BY: CWV	CHECKED BY: VAS	
SHEET 1 OF 2			



LEGEND

BASIN DESIGNATION: G1 (2.35, .53, .66) C5, C100

PIPE RUN REFERENCE LABEL: 4

SURFACE DESIGN POINT: 6

SWALE DESIGN POINT: 3

BASIN BOUNDARY: --- (6920) ---

EXISTING CONTOUR: --- (6920) ---

PROP CONTOUR: --- (6920) ---

SUBDIVISION BOUNDARY: --- (6920) ---

PROPOSED STORM SEWER PIPE: --- (6920) ---

EXISTING STORM SEWER PIPE: --- (6920) ---

CROSSSPAN: [Symbol]

INLET: [Symbol]

MANHOLE: [Symbol]

EXISTING FLOW DIRECTION ARROW: [Symbol]

PROPOSED FLOW DIRECTION ARROW: [Symbol]

FLARED END SECTION: [Symbol]

HIGH POINT: H.P. X

LOW POINT: L.P. X

100 YEAR BFE (NAVD88/NGVD29): [Symbol]

APPRX. 100 YEAR FLOODPLAIN: [Symbol]

EFFECTIVE 100 YEAR FLOODPLAIN: [Symbol]

EFFECTIVE 100 YEAR FLOODWAY: [Symbol]

Scale: 1" = 100'

Scale in Feet: 0 25 50 100 200

BASIN SUMMARY

BASIN	AREA (ACRES)	Q ₅	Q ₁₀₀
P	0.4	0.2	1.1
Q	0.4	0.7	1.6
Q2	0.1	0.2	0.4
R	0.4	0.8	2.0
R2	0.2	0.5	1.1
S	0.1	0.5	0.9
S2	0.1	0.4	0.6
T	0.3	0.7	1.6
OS6	1.0	0.5	2.7
A1	1.4	0.5	3.6
A2	2.0	2.8	7.1
A3	0.4	0.6	1.6
A4	2.0	2.7	7.5
A5	1.3	2.2	5.5
A6	0.8	1.2	3.1

BASIN SUMMARY

BASIN	AREA (ACRES)	Q ₅	Q ₁₀₀
A7	0.7	1.1	2.8
A8	0.2	0.4	1.0
A9	1.1	1.8	4.5
A12	0.2	0.3	0.8
A13	0.4	0.7	1.6
A7*	1.2	2.4	5.3
A8*	0.9	1.8	4.0
A9*	0.8	1.6	3.4

DESIGN POINT SUMMARY

DESIGN POINT	Q ₅	Q ₁₀₀	BASIN	STRUCTURE
14	0.9	2.6	P, Q	WROADWAY
14A	0.2	0.4	Q2	ROADWAY
15	0.8	2.0	R	ROADWAY
15A	0.5	1.1	R2	ROADWAY
16	0.5	0.9	S	ROADWAY
16A	0.4	0.6	S2	ROADWAY
17	0.7	1.6	T	ROADWAY
2*	4.5	15.0	DP14, A1, A2, OS6	CROSSSPAN
3*	5.1	16.4	DP2, A3	EX 4' D10-R AT-GRADE INLET
4*	3.1	7.5	DP14A, DP15, A5	EX 4' D10-R AT-GRADE INLET
5*	4.9	18.4	FB DP3, A4	EX 4' D10-R AT-GRADE INLET
6*	1.2	3.1	A6	EX 4' D10-R AT-GRADE INLET
7*	2.6	8.3	FB DP4, A7, 15A	EX 4' D10-R AT-GRADE INLET
8*	4.6	25.0	FB DP5, FB DP6, FB DP7, A8, A12	EX 8' D10-R AT-GRADE INLET
9*	3.0	19.1	DP16, A9, A13, FB DP8	EX 16' D10-R AT-GRADE INLET
7**	1.8	4.0	A8*	EX 8' D10-R SUMP INLET
8**	4.7	10.4	DP16A, DP17, A7*, A9*	EX 10' D10-R SUMP INLET

STORM SEWER SUMMARY

PIPE RUN	Q ₅	Q ₁₀₀	PIPE SIZE	CONTRIBUTING PIPES/DESIGN POINTS
1*	1.9	2.7	18" RCP	INLET DP4*
2*	1.9	2.7	18" RCP	PR1*
3*	1.9	2.7	18" RCP	PR2*
4*	1.7	2.8	18" RCP	INLET DP7*
4A*	1.1	1.9	18" RCP	INLET DP6*
5*	4.5	7.1	18" RCP	PR4*, PR4A*
5A*	2.3	3.7	18" RCP	INLET DP3*
6*	2.3	3.7	18" RCP	PR5A*
7*	2.3	3.7	18" RCP	PR6*
8*	2.2	3.7	18" RCP	INLET DP5*
9*	4.4	7.2	18" RCP	PR7*, PR8*
10*	8.3	13.4	24" RCP	PR5*, PR9*
11*	3.8	8.7	18" RCP	INLET DP8*
12*	11.5	20.7	30" RCP	PR10*, PR11*
13*	2.7	14.5	18" RCP	PR12*, PR13*

STORM SEWER SUMMARY

PIPE RUN	Q ₅	Q ₁₀₀	PIPE SIZE	CONTRIBUTING PIPES/DESIGN POINTS
9**	14.3	35.5	36" RCP	PR12*, PR13*
10**	1.8	4.0	18" RCP	DP7**
11**	15.6	38.5	36" RCP	PR9**, PR10**
12**	19.6	47.2	36" RCP	PR11, DP8**

FOR LOCATING & MARKING GAS, ELECTRIC, WATER & TELEPHONE LINES

FOR BURIED UTILITY INFORMATION 48 HRS BEFORE YOU DIG CALL 1-800-922-1987

M&S CIVIL CONSULTANTS, INC.

102 E. PIKES PEAK AVE., 5TH FLOOR
 COLORADO SPRINGS, CO 80903
 PHONE: 719.955.5485

FALCON TRUCKING FILING NO.1

FINAL DRAINAGE MAP

PROJECT NO. 29-007

DESIGNED BY: VAS
 DRAWN BY: CLP DCV
 CHECKED BY: VAS

SCALE: HORIZONTAL: 1"=100' VERTICAL: N/A

DATE: 12-02-2022

SHEET 2 OF 2

DM2

File: 0:120071-Falcon Trucking\020007 Proposed Drainage Map-Enclaves.dwg Plotstamp: 12/2/2022 10:37 AM