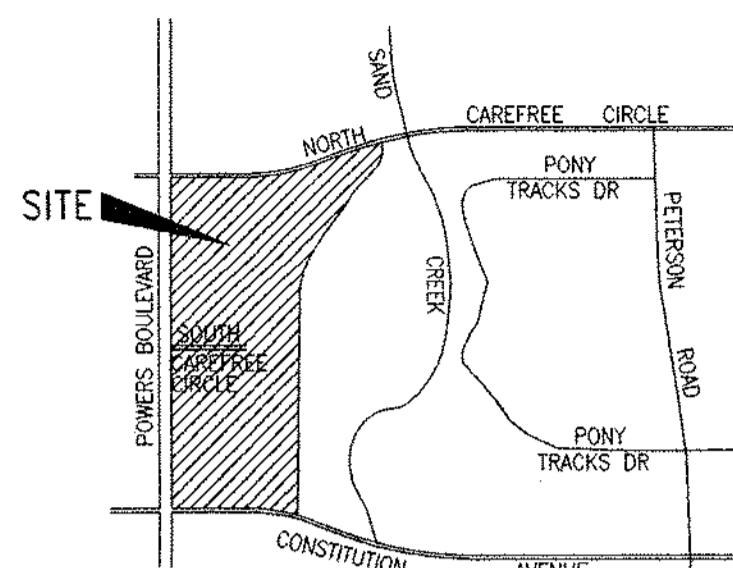


# FIRST AND MAIN TOWN CENTER

## DEVELOPED DRAINAGE PLAN

SUMMARY TABLE				SUMMARY TABLE				SUMMARY TABLE			
BASIN	AREA (Ac)	Q5 (cfs)	Q100 (cfs)	BASIN	AREA (Ac)	Q5 (cfs)	Q100 (cfs)	BASIN	AREA (Ac)	Q5 (cfs)	Q100 (cfs)
I	3.58	10.0	17.6	XV	4.70	12.3	21.5	XXIX	4.97	13.3	23.6
II	16.03	34.4	64.1	XVI	1.71	5.1	9.2	XXX	4.19	11.0	19.2
III	5.03	16.7	29.9	XVII	0.94	4.4	7.6	XXI	0.96	3.1	5.6
IV	7.82	26.2	46.4	XVIII	1.22	2.2	4.1	XXII	1.16	3.8	6.8
V	3.45	12.2	21.3	XIX	1.26	4.9	8.7	DEV. DESIGN PT# 1	32.33	71.3	129.3
VI	7.59	24.5	42.4	XX	0.93	3.7	6.6	DEV. DESIGN PT# 2	43.53	95.1	169.2
VII	3.61	12.4	21.8	XXI	2.80	8.0	14.6	DEV. DESIGN PT# 3	41.22	94.6	166.6
VIII	4.58	5.0	10.0	XXII	9.18	27.0	46.6	DEV. DESIGN PT# 3A	49.33	102.2	184.7
IX	8.59	28.8	49.5	XXIII	2.45	4.5	7.9	DEV. DESIGN PT# 4	6.41	13.8	24.8
X	5.72	20.2	35.0	XXIV	9.49	29.4	50.4	DEV. DESIGN PT# 5	5.80	5.9	11.9
XI	4.20	16.6	30.3	XXV	9.86	35.2	61.6	DEV. DESIGN PT# 6	5.15	13.7	23.9
XII	18.08	61.5	108.8	XXVI	6.63	13.4	27.6	DEV. DESIGN PT# 7	60.09	134.7	240.0
XIII	4.63	16.5	29.1	XXVII	8.31	24.8	44.5	DEV. DESIGN PT# NORTH*	101.17	226.6	398.2
XIV	10.62	28.0	48.4	XXVIII	5.47	17.5	29.8				



Vicinity Map  
NOT TO SCALE

- LEGEND**
- 6100 EXISTING CONTOURS
  - BASIN BOUNDARIES
  - IV BASIN DESIGNATOR
  - DP #1 DEVELOPED DESIGN POINT
  - PROPOSED 2' CONTOURS
  - DIRECTION OF FLOW
  - ② PRELIMINARY PIPE DESIGNATION (SEE TABLE ON EXHIBIT 3)

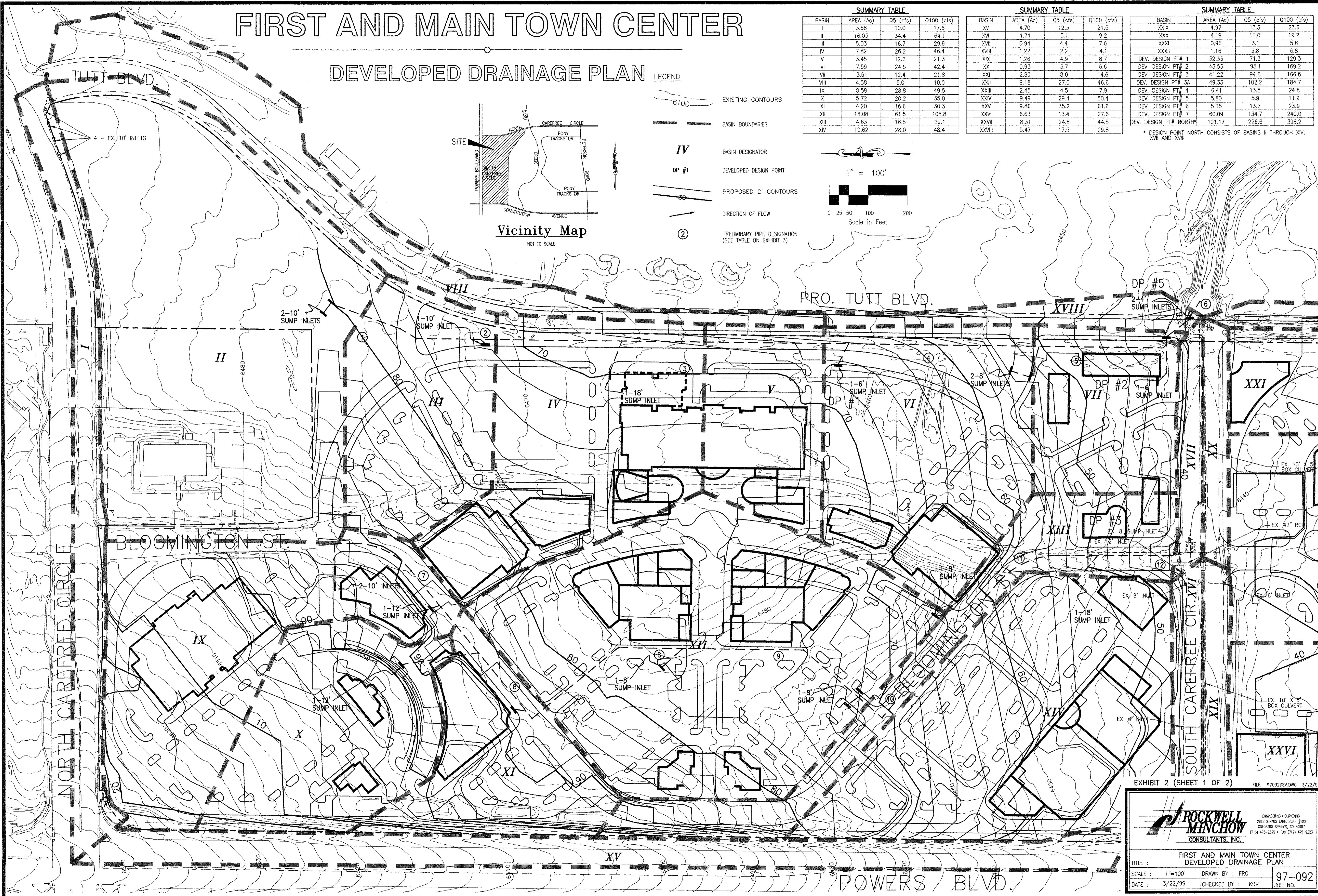
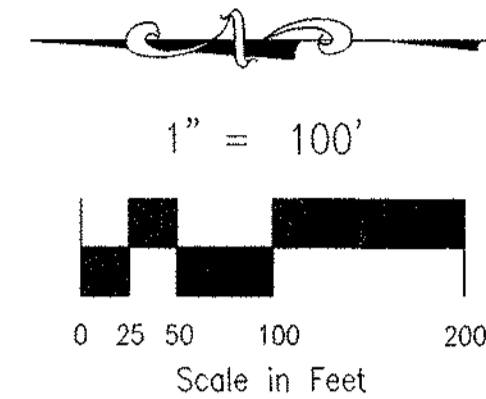


EXHIBIT 2 (SHEET 1 OF 2) FILE: 97092DEV.DWG 3/22/99

**ROCKWELL MINCHOW CONSULTANTS, INC.**  
 ENGINEERING • SURVEYING  
 2228 STRAUS LANE, SUITE #100  
 COLORADO SPRINGS, CO 80907  
 (719) 475-2575 • FAX (719) 475-9223

**FIRST AND MAIN TOWN CENTER DEVELOPED DRAINAGE PLAN**

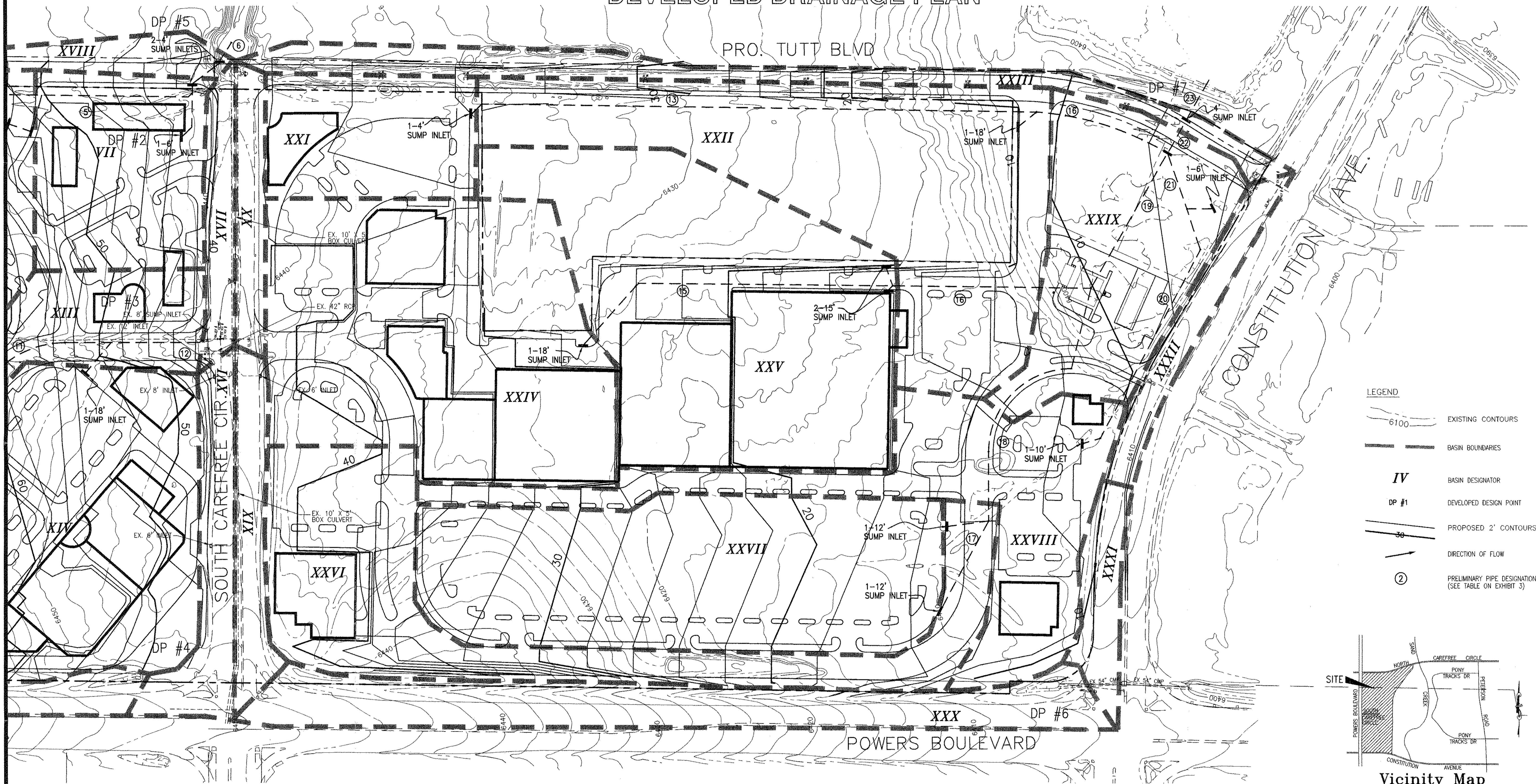
TITLE :  
 SCALE : 1"=100'  
 DATE : 3/22/99

DRAWN BY : FRC  
 CHECKED BY : KDR

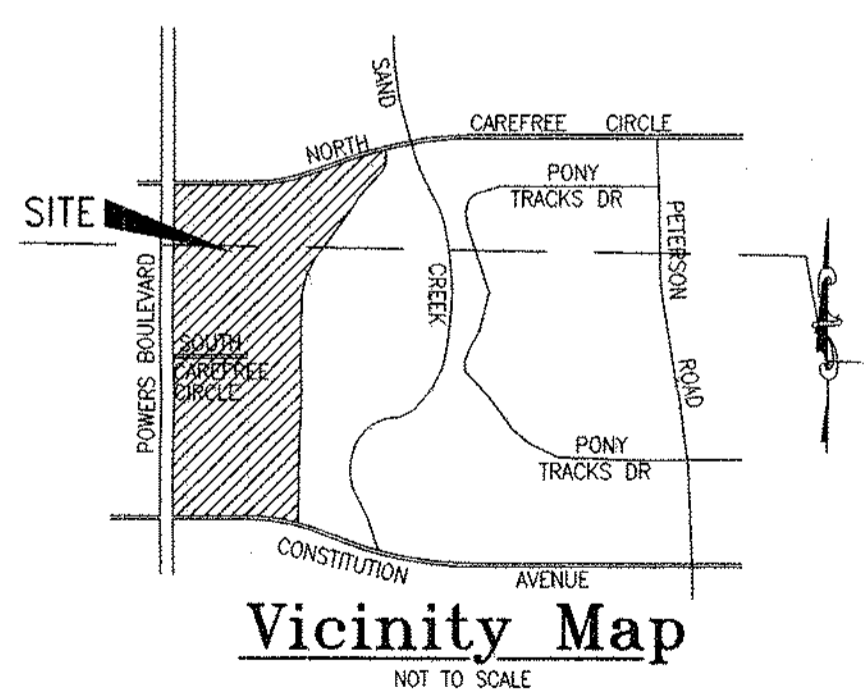
97-092  
 JOB NO.

# FIRST AND MAIN TOWN CENTER

## DEVELOPED DRAINAGE PLAN



- LEGEND**
- 6100 EXISTING CONTOURS
  - BASIN BOUNDARIES
  - IV** BASIN DESIGNATOR
  - DP #1** DEVELOPED DESIGN POINT
  - PROPOSED 2' CONTOURS
  - DIRECTION OF FLOW
  - PRELIMINARY PIPE DESIGNATION (SEE TABLE ON EXHIBIT 3)



**SUMMARY TABLE**

BASIN	AREA (Ac)	Q5 (cfs)	Q100 (cfs)
I	3.58	10.0	17.6
II	16.03	34.4	64.1
III	5.03	16.7	29.9
IV	7.82	26.2	46.4
V	3.45	12.2	21.3
VI	7.59	24.5	42.4
VII	3.61	12.4	21.8
VIII	4.58	5.0	10.0
IX	8.59	28.8	49.5
X	5.72	20.2	35.0
XI	4.20	16.6	30.3
XII	18.08	61.5	108.8
XIII	4.63	16.5	29.1
XIV	10.62	28.0	48.4

**SUMMARY TABLE**

BASIN	AREA (Ac)	Q5 (cfs)	Q100 (cfs)
XV	4.70	12.3	21.5
XVI	1.71	5.1	9.2
XVII	0.94	4.4	7.6
XVIII	1.22	2.2	4.1
XIX	1.26	4.9	8.7
XX	0.93	3.7	6.6
XXI	2.80	8.0	14.6
XXII	9.18	27.0	46.6
XXIII	2.45	4.5	7.9
XXIV	9.49	29.4	50.4
XXV	9.86	35.2	61.6
XXVI	6.63	13.4	27.6
XXVII	8.31	24.8	44.5
XXVIII	5.47	17.5	29.8

**SUMMARY TABLE**

BASIN	AREA (Ac)	Q5 (cfs)	Q100 (cfs)
XXIX	4.97	13.3	23.6
XXX	4.19	11.0	19.2
XXXI	0.96	3.1	5.6
XXXII	1.16	3.8	6.8
DEV. DESIGN PT# 1	32.33	71.3	129.3
DEV. DESIGN PT# 2	43.53	95.1	169.2
DEV. DESIGN PT# 3	41.22	94.6	166.6
DEV. DESIGN PT# 3A	49.33	102.2	184.7
DEV. DESIGN PT# 4	6.41	13.8	24.8
DEV. DESIGN PT# 5	5.80	5.9	11.9
DEV. DESIGN PT# 6	5.15	13.7	23.9
DEV. DESIGN PT# 7	60.09	134.7	240.0
DEV. DESIGN PT# NORTH*	101.17	226.6	398.2

\* DESIGN POINT NORTH CONSISTS OF BASINS II THROUGH XIV, XVII AND XVIII

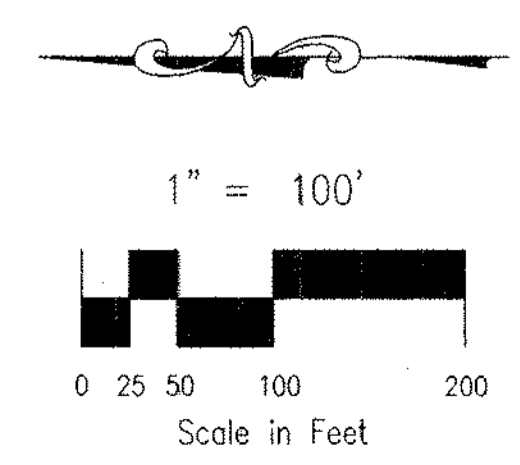


EXHIBIT 2 (SHEET 2 OF 2) FILE: 97092DEV.DWG 3/22/99

**ROCKWELL MINCHOW**  
CONSULTANTS, INC.

ENGINEERING - SURVEYING  
2020 STRONG LANE, SUITE #100  
COLORADO SPRINGS, CO 80907  
(719) 475-2575 • FAX (719) 475-9223

TITLE: FIRST AND MAIN TOWN CENTER DEVELOPED DRAINAGE PLAN  
SCALE: 1"=100' DRAWN BY: FRC 97-092  
DATE: 3/22/99 CHECKED BY: KDR JOB NO.