

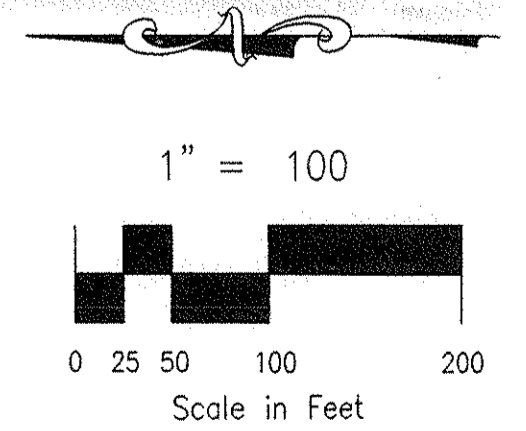
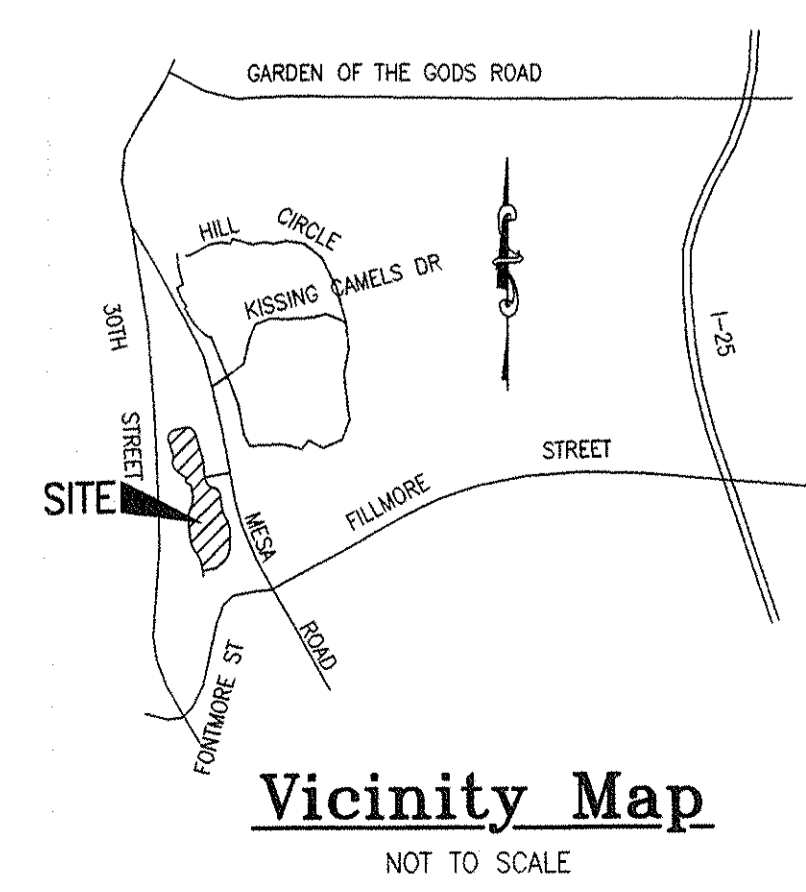
- LEGEND**
- 6100 EXISTING CONTOURS
 - BASIN BOUNDARIES
 - IV** BASIN DESIGNATOR
 - DP #1** DESIGN POINT
 - DIRECTION OF FLOW

DRAINAGE BASIN TABLE

BASIN	AREA (Ac)	Q ₂ cfs	Q ₁₀₀ cfs
I	24.6	32.0	64.9
II	3.6	3.7	8.2
III	5.7	3.4	8.4
IV	8.0	18.0	36.4
V	13.4	19.8	48.4
VI	10.6	9.3	22.6
VII	5.5	5.6	13.5
VIII	41.8	25.1	61.4

DESIGN POINT TABLE

DP	AREA (Ac)	Q ₂ cfs	Q ₁₀₀ cfs
DP#1	28.4	32.7	69.2
DP#2	63.2	48.5	114.1



SHEET 1 OF 2

FILE: 9906BAS.DWG 2/7/02
XREF: 9906TOP.DWG

ROCKWELL MINCHOW
CONSULTANTS, INC.

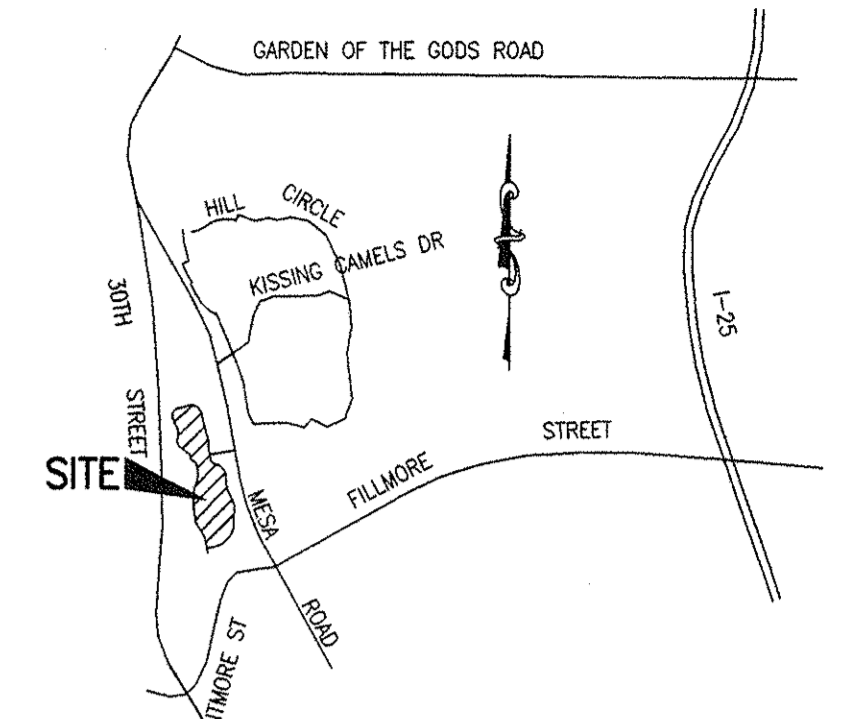
ENGINEERING - SURVEYING
1873 AUSTIN BLUFFS PARKWAY
COLORADO SPRINGS, CO 80918
(719) 479-2075 • FAX (719) 475-8223

GATEWAY VISTA - HILL DEVELOPMENT
HISTORIC DRAINAGE PLAN

TITLE :
SCALE : 1"=100'
DATE : 11/28/01

DRAWN BY : TOM
CHECKED BY : DM

99-069
JOB NO.



Vicinity Map
NOT TO SCALE

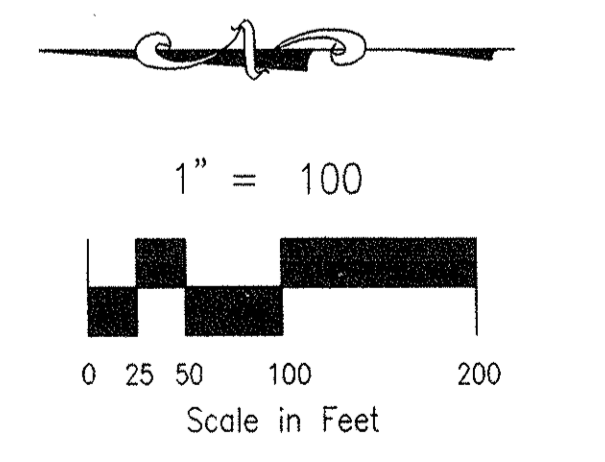
- LEGEND**
- 6100 EXISTING CONTOURS
 - BASIN BOUNDARIES
 - IV** BASIN DESIGNATOR
 - DP #1** DESIGN POINT
 - DIRECTION OF FLOW

DRAINAGE BASIN TABLE

BASIN	AREA (Ac)	Q _x cfs	Q ₁₀₀ cfs
I	24.6	32.0	64.9
II	3.5	3.7	8.7
III	5.7	3.4	8.4
IV	8.0	18.0	36.4
V	13.4	19.8	46.4
VI	10.6	9.3	23.6
VII	5.5	5.6	13.5
VIII	41.8	25.1	61.4

DESIGN POINT TABLE

DP	AREA (Ac)	Q _x cfs	Q ₁₀₀ cfs
DP#1	28.4	32.7	63.2
DP#2	63.2	48.5	114.1



SHEET 2 OF 2

FILE: 99069BAS.DWG 2/07/02
XREF: 99069TOP.DWG

ROCKWELL MINCHOW CONSULTANTS, INC.

ENGINEERING • SURVEYING
1675 ALTON BLUFFS PARKWAY
COLORADO SPRINGS, CO 80916
(719) 475-2075 • FAX (719) 475-4223

**GATEWAY VISTA — HILL DEVELOPMENT
HISTORIC DRAINAGE PLAN**

TITLE: _____ SCALE: 1"=100' DRAWN BY: TOM DATE: 11/28/01 CHECKED BY: DM

99-069
JOB NO.