

GOLD HILL MESA FILING NO. 9 & 10

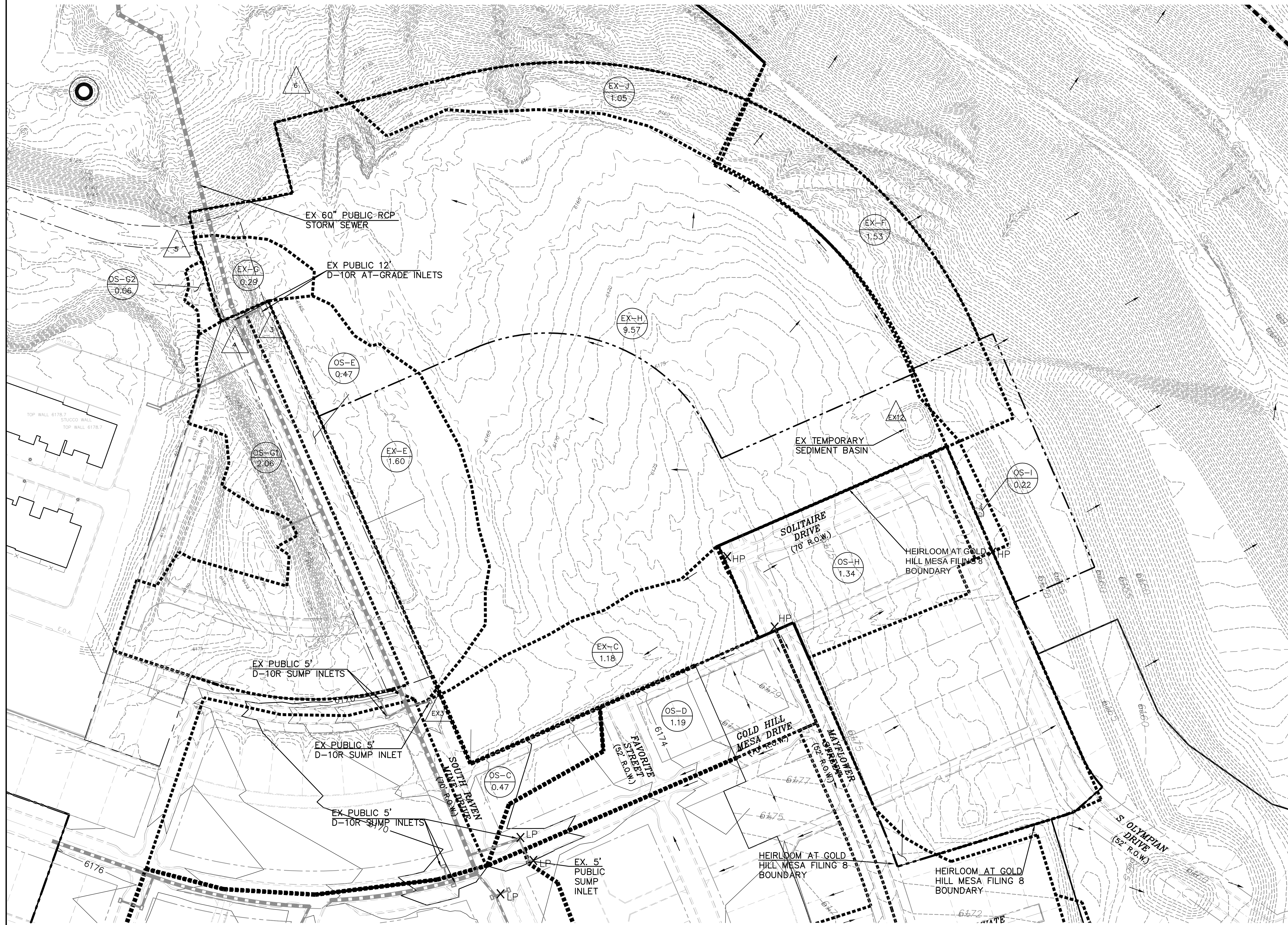
COLORADO SPRINGS, CO

EXISTING DRAINAGE MAP

MAY 2018

DESIGN POINT SUMMARY

DP	CONTRIBUTING BASINS	AREA AC.	Q5 CFS	Q100 CFS	INLET SIZE/TYPE	OWNER
3	OS-E & E	2.07	3.0	6.1	EX 12' D10-R SUMP	PUBLIC
4	OS-G1	2.06	4.9	9.6	EX 12' D10-R AT-GRADE	PUBLIC
5	DP-3 & 4 FLOW BY, OS-G & OS-G2	2.41	0.3	3.5	EX 12' D10-R AT-GRADE	PUBLIC
6	EX-H	9.57	7.2	14.3	NO INLET FLOW CHK	
EX3	OS-C & EX-C	1.65	2.4	4.7	EX 5' D10-R SUMP	PUBLIC
EX12	OS-H & OS-I	1.56	3.6	7.1	EX TEMP SEDIMENT BASIN	

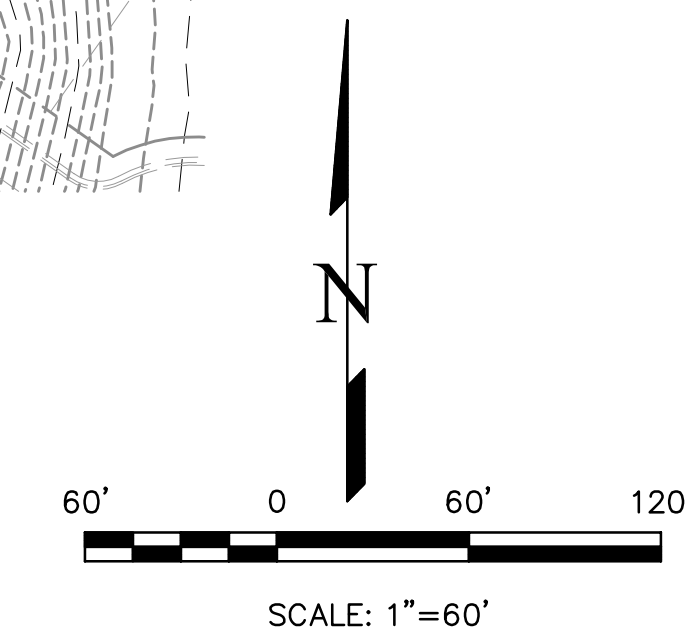


EXISTING CONDITIONS

BASIN	ACRES	Q5 CFS	Q100 CFS
OS-C	0.47	1.40	2.7
EX-C	1.18	1.10	2.3
OS-E	0.47	1.40	2.9
EX-E	1.60	1.60	3.4
EX-F	1.53	1.80	3.9
OS-G1	2.06	4.90	9.6
OS-G2	0.06	0.10	0.2
EX-G	0.29	0.40	0.8
OS-H	1.34	3.10	6.1
EX-H	9.57	7.20	14.3
OS-I	0.22	0.60	1.2
EX-J	1.05	1.20	2.7

LEGEND

- 10' EX CONTOUR
- 2' EX CONTOUR
- PROPOSED FLOW DIRECTION
- BASIN BOUNDARY
- TIME OF CONCENTRATION
- BASIN ID
- ACREAGE
- DESIGN POINT



THIS DESIGN WAS PREPARED UNDER MY DIRECT SUPERVISION FOR AND ON BEHALF OF TERRA NOVA ENGINEERING, INC.

QUENTIN ARMILIO, PROFESSIONAL ENGINEER
COLORADO P.E. NO. 37170

REVISIONS	NO.	DESCRIPTION	DATE

UNTIL SUCH TIME AS THESE CONDITIONS ARE MET, THIS DESIGN IS NOT TO BE USED FOR ANY OTHER PROJECTS WITHOUT THE WRITTEN AUTHORIZATION OF TERRA NOVA ENGINEERING, INC.

PREPARED FOR:
GOLD HILL NEIGHBORHOOD, LLC
ATTN: BARRY BRINTON
142 S. RAVEN MINE DR.
COLORADO SPRINGS, CO 80904
719-499-3917

125 N. WILKINSON AVENUE
COLORADO SPRINGS, CO 80903
OFFICE: 719-635-4422
FAX: 719-635-6426
www.tnove.com

Terra Nova
Engineering, Inc.
A Terra Nova Group Company

GOLD HILL MESA FILING NO. 9 & 10
EXISTING DRAINAGE MAP

DESIGNED BY QNA
DRAWN BY DLM
CHECKED BY QNA
H-SCALE 1"=60'
V-SCALE NA
JOB NO. 1713.00
DATE ISSUED 5/1/18
SHEET NO. 1 OF 1