

PRELIMINARY

Revisions

Greiner Engineering
 Greiner Engineering Sciences, Inc.
 Denver, Colorado, Colorado Springs, Colorado
 Albuquerque, N.M., Kemmerer, Wyoming

Design **KEH**
 Drawn **AK**
 Check **KEH**

Scale 1" = 100'
 JUL 23 1986

HIGH CHAPARRAL SUBD.
 BASIN "C" & "D" DRAINAGE PLAN

Date APRIL, 1986
 Job No 5178806

Sheet 3 of 3

SEE BASIN "C" & "D" OFFSITE FOR PORTIONS OF OLD FARM HEIGHTS DRAINAGE REPORT

PROPOSED SUMP INLETS AS PER OLD FARM HEIGHTS DRAINAGE REPORT.

EXISTING DITCH

EXISTING 64" CMP

OUTFALL STETSON HILLS CHANNEL (SEE REPORT FOR DETAILS)

OLD FARM HEIGHTS ALL SHEET FLOW TO BE DIRECTED TO RIO VISTA VIA CURB & GUTTER PARKING LOT

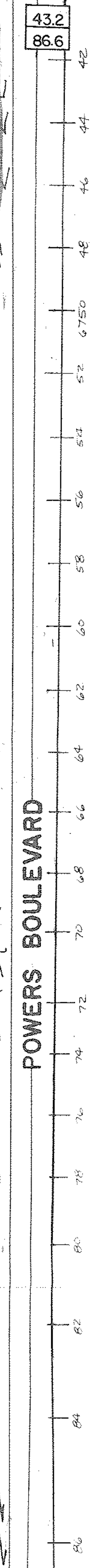
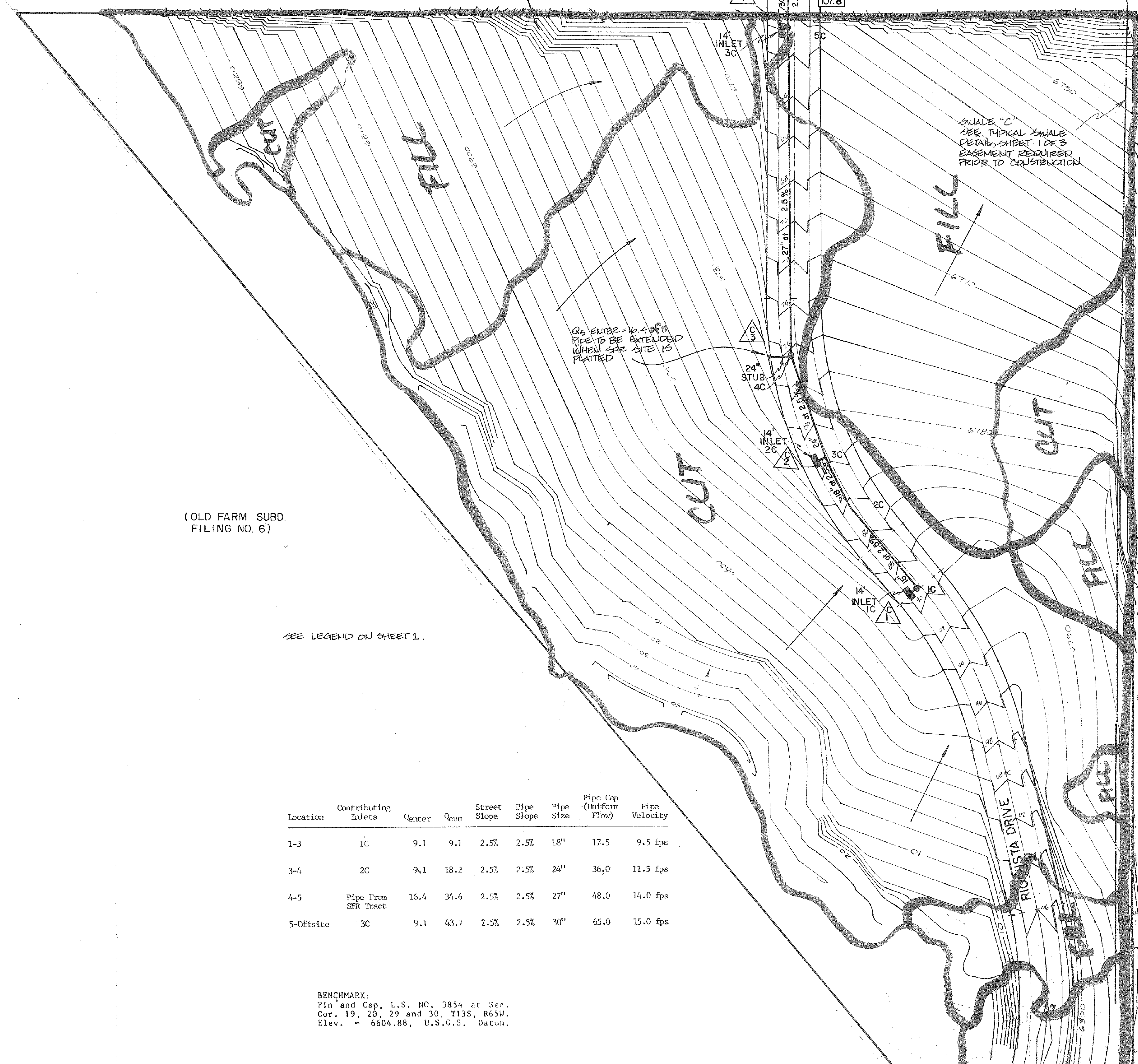
TO SUMP IN OLD FARM HEIGHTS Q PIPE = 43.7
 Q BYPASS 5 yr. = 8.1 cfs
 100 yr. = 64.1 cfs

Q BYPASS = 5 yr. = 4.4 cfs
 100 yr. = 7.7 cfs

EASEMENT REQUIRED PRIOR TO CONSTRUCTION

SWALE "C" SEE TYPICAL SWALE DETAIL SHEET 1 OR 3 EASEMENT REQUIRED PRIOR TO CONSTRUCTION

Q_S ENTER = 16.4 cfs PIPE TO BE EXTENDED WHEN SFR TRACT IS PLATTED



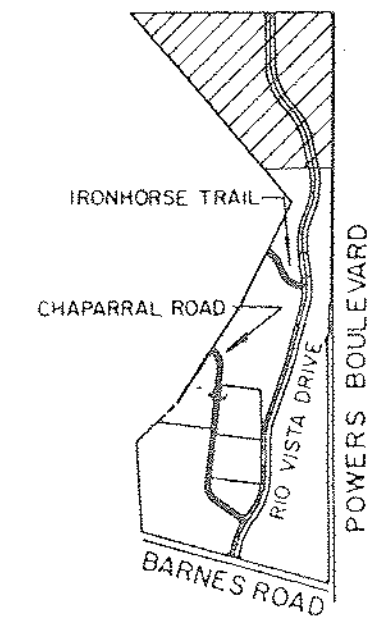
SCALE: 1" = 100'

(OLD FARM SUBD. FILING NO. 6)

SEE LEGEND ON SHEET 1.

Location	Contributing Inlets	Q _{center}	Q _{sum}	Street Slope	Pipe Slope	Pipe Size	Pipe Cap (Uniform Flow)	Pipe Velocity
1-3	1C	9.1	9.1	2.5%	2.5%	18"	17.5	9.5 fps
3-4	2C	9.1	18.2	2.5%	2.5%	24"	36.0	11.5 fps
4-5	Pipe From SFR Tract	16.4	34.6	2.5%	2.5%	27"	48.0	14.0 fps
5-Offsite	3C	9.1	43.7	2.5%	2.5%	30"	65.0	15.0 fps

BENCHMARK:
 Pin and Cap, L.S. NO. 3854 at Sec.
 Cor. 19, 20, 29 and 30, T13S, R65W.
 Elev. = 6604.88, U.S.G.S. Datum.



KEY MAP
 1" = 2000'

DRAWING 44-10-82325