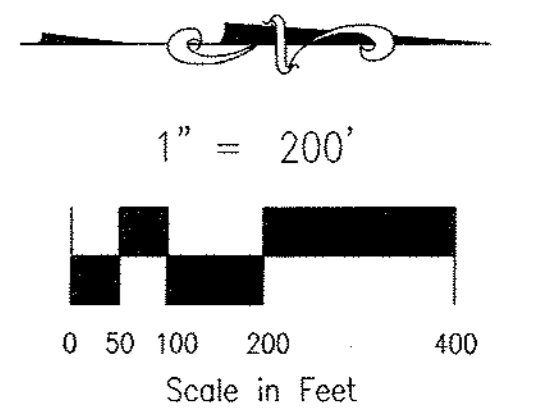
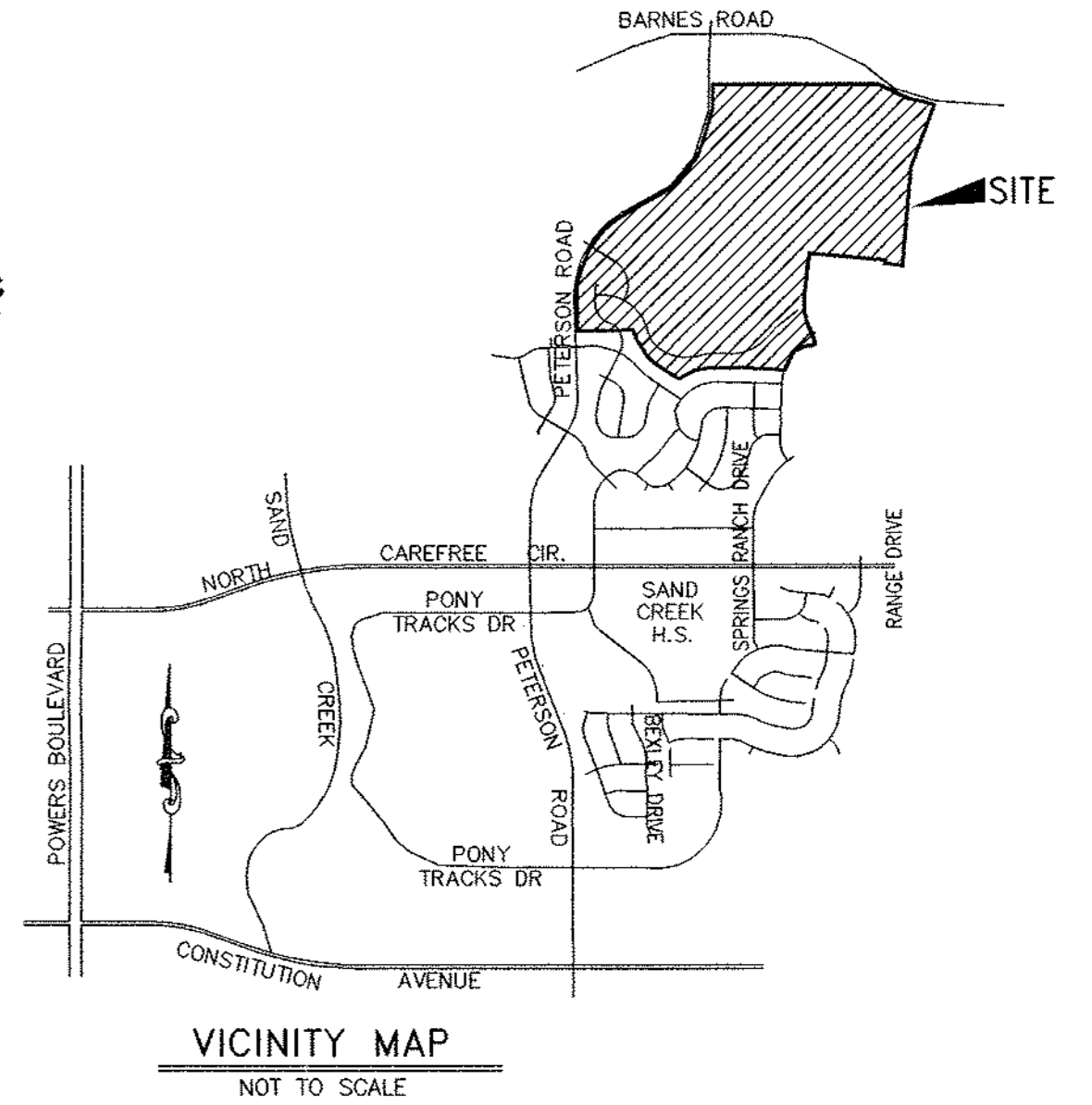
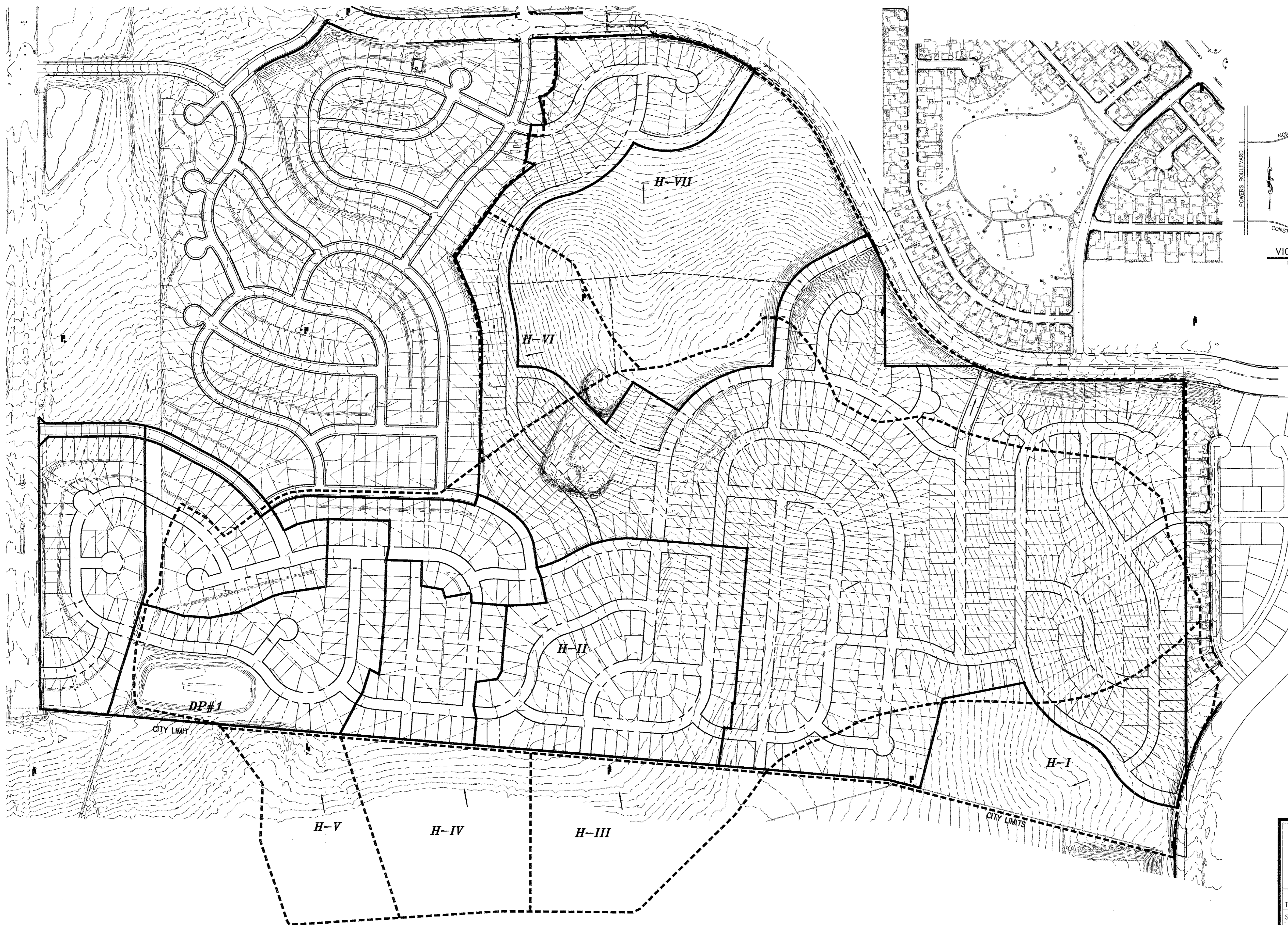


# HIGH MEADOWS AT SPRINGS RANCH

## HISTORIC DRAINAGE PLAN



HISTORIC DRAINAGE BASIN TABLE

| BASIN | AREA (Ac.) | Q <sub>5</sub> (CFS) | Q <sub>100</sub> (CFS) |
|-------|------------|----------------------|------------------------|
| H-I   | 20.7       | 12.9                 | 31.1                   |
| H-II  | 137.3      | 58.3                 | 149.0                  |
| H-III | 12.1       | 6.5                  | 20.6                   |
| H-IV  | 12.2       | 6.2                  | 20.1                   |
| H-V   | 8.4        | 5.7                  | 13.8                   |
| H-VI  | 10.5       | 7.9                  | 19.1                   |
| H-VII | 53.9       | 33.7                 | 81.1                   |
| DP#1  | 190.7      | 81.0                 | 206.9                  |

LEGEND

- 6100 EXISTING CONTOURS
- HISTORIC BASINS
- DIRECTION OF FLOW
- H-I DRAINAGE BASIN
- DP#1 DESIGN POINT

FILE: 01004DPPGEC.DWG 10/30/01

ENGINEERING • SURVEYING  
1512 AUSTIN BLUFFS PARKWAY  
COLORADO SPRINGS, CO 80918  
(719) 475-2575 • FAX (719) 475-9223

**HIGH MEADOWS AT SPRINGS RANCH  
HISTORIC DRAINAGE PLAN**

TITLE :  
SCALE : 1"=200' DRAWN BY : TDM  
DATE : 10/30/01 CHECKED BY : KDR JOB NO. 01-004