

SCALE: 1"=100'  
 CONTOUR INTERVAL: 2'  
 DATE OF PHOTOGRAPHY: 11-29-77  
 B-238 FLT. 1 SHT. 1

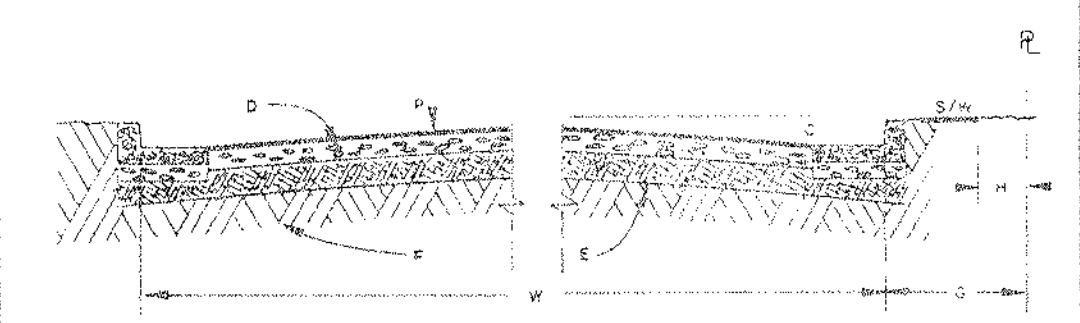
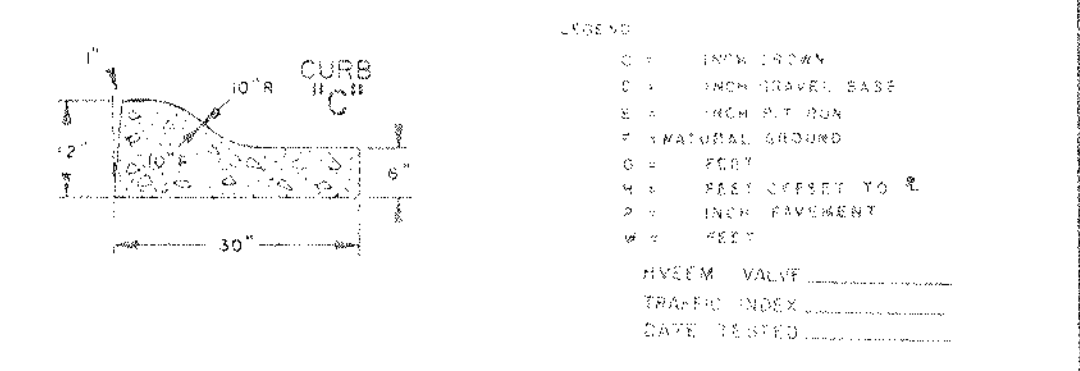
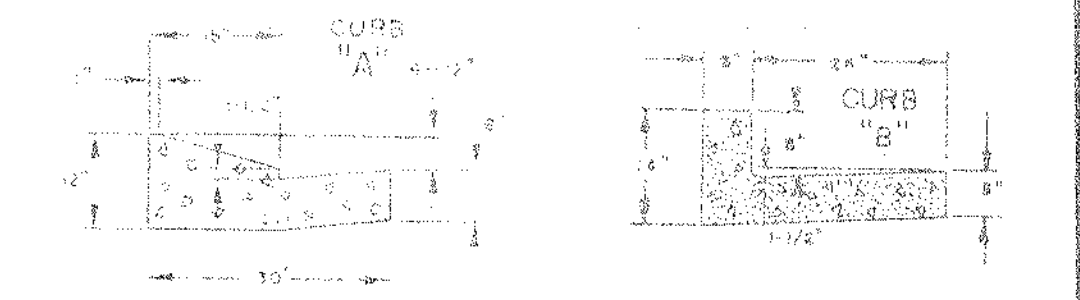
SEWER STATEMENT  
 ANY CHANGES OR ALTERATIONS AFFECTING THE GRADES, ALIGNMENT, ELEVATION AND DEPTH OF COVER OF SEWERS AND APPURTENANCES SHOWN ON THIS DRAWING SHALL BE THE RESPONSIBILITY OF THE DEVELOPER.

SIGNED: \_\_\_\_\_  
 APPROVED: DATE \_\_\_\_\_  
 SIGNED: \_\_\_\_\_  
 SEWER DEPARTMENT

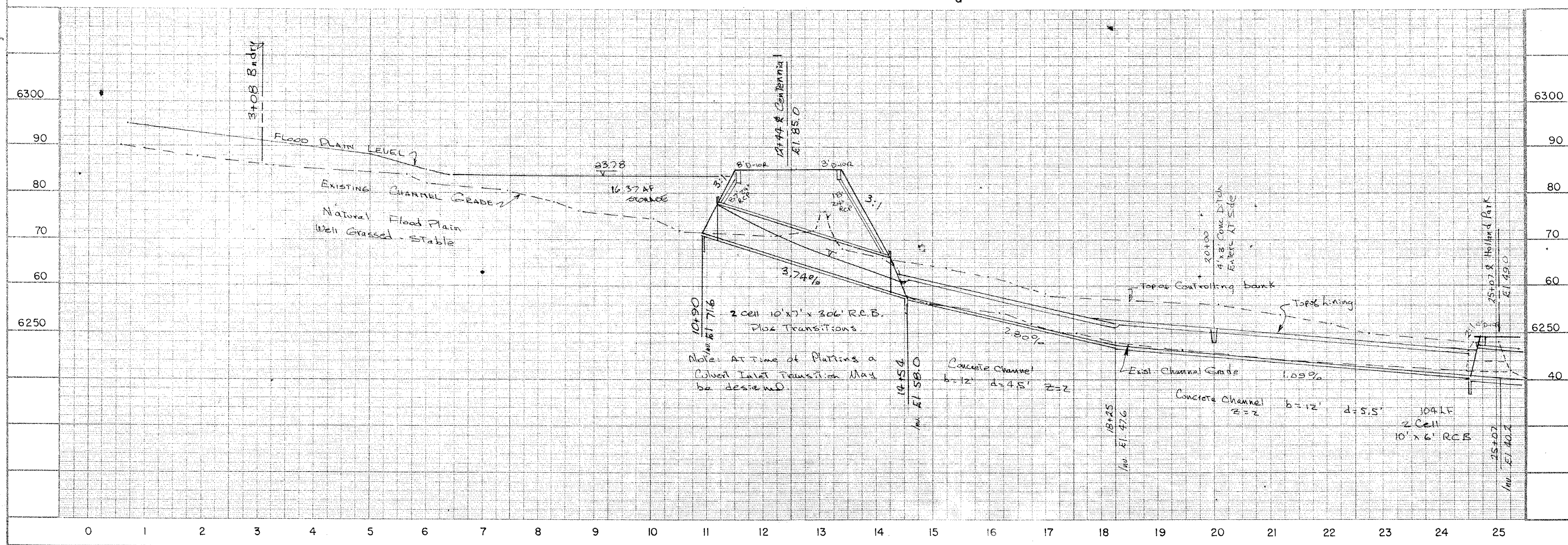
BENCH MARK

NOTES

1. ALL VERTICAL DATUM APPLIES TO THE TOP OF CURB AS SHOWN UNDER DETAILS
2. ALL CURB RETURNS WILL HAVE A 10(TEN) FOOT RADIUS UNLESS OTHERWISE NOTED.
3. ALL DIP SLABS WILL BE CONSTRUCTED ACCORDING TO THE SPECIFICATIONS OF THE CITY OF COLORADO SPRINGS, OR AS OTHERWISE APPROVED.
4. STREET PAVING AT ALL DIP SLABS WILL HAVE A CROWN TRANSITION TO MINIMIZE THE DRIVING HAZARD
5. ALL HORIZONTAL CURB STATIONING IS BASED ON 3' OFFSET BEHIND FACE OF CURB.



ENGINEERING DEPARTMENT  
 CURB AND GUTTER — GRADES  
 APPROVED: \_\_\_\_\_  
 DATE: \_\_\_\_\_  
 SIGNED: \_\_\_\_\_  
 GRADES REVIEWED:  
 DATE: \_\_\_\_\_  
 SIGNED: \_\_\_\_\_



JOB NO. 77  
 1270 FROM 0+00 TO 25+00

PRELIMINARY GREENBELT DESIGN  
 HOLLAND PARK WEST DEVELOPMENT

SCALE: Vert: 1"=12' Horiz: 1"=100'

APPROVED BY: *OEW*  
 G.E. Watts PE 9853

PLAN BY: OEW  
 DRAWN BY: OEW

SURVEYED BY: \_\_\_\_\_ CHECKED BY: \_\_\_\_\_

UNITED PLANNING & ENGINEERING  
 916 N. WEBER ST.  
 Colorado Springs, Colorado

1 of 3



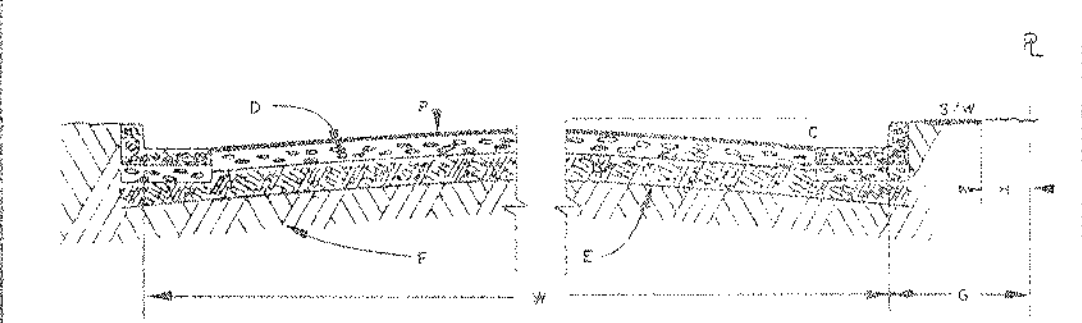
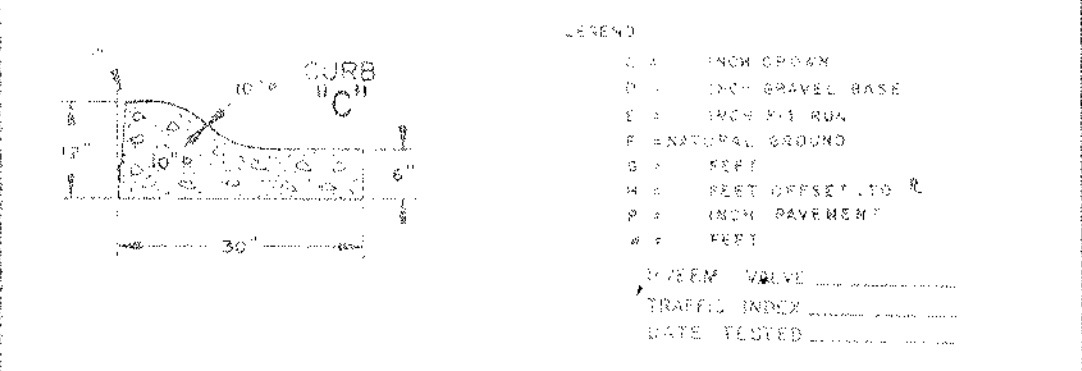
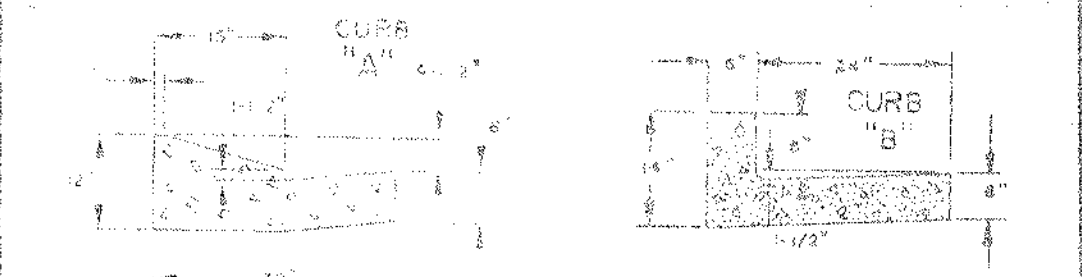
SEWER STATEMENT  
 ANY CHANGES OR ALTERATIONS EFFECTING THE GRADES, ALIGNMENT, ELEVATION AND DEPTH OF COVER OF SEWERS AND APPURTENANCES SHOWN ON THIS DRAWING SHALL BE THE RESPONSIBILITY OF THE DEVELOPER.

SIGNED \_\_\_\_\_  
 APPROVED DATE \_\_\_\_\_  
 SIGNED \_\_\_\_\_  
 SEWER DEPARTMENT

BENCH MARK

NOTES

1. ALL VERTICAL DATUM APPLIES TO THE TOP OF CURB AS SHOWN UNDER DETAILS.
2. ALL CURB RETURNS WILL HAVE A 10 (TEN) FOOT RADIUS UNLESS OTHERWISE NOTED.
3. ALL DIP SLABS WILL BE CONSTRUCTED ACCORDING TO THE SPECIFICATIONS OF THE CITY OF COLORADO SPRINGS, OR AS OTHERWISE APPROVED.
4. STREET PAVING AT ALL DIP SLABS WILL HAVE A CROWN TRANSITION TO MINIMIZE THE DRIVING HAZARD.
5. ALL HORIZONTAL CURB STATIONING IS BASED ON 3' OFFSET BEHIND FACE OF CURB.



ENGINEERING DEPARTMENT  
 CURB AND GUTTER — GRADES  
 APPROVED  
 DATE \_\_\_\_\_  
 SIGNED \_\_\_\_\_  
 GRADES REVIEWED  
 DATE \_\_\_\_\_  
 SIGNED \_\_\_\_\_

77 PRELIMINARY GREENBELT DESIGN  
 1270 HOLLAND PARK WEST DEVELOPMENT  
 FROM 25+00 TO 50+00

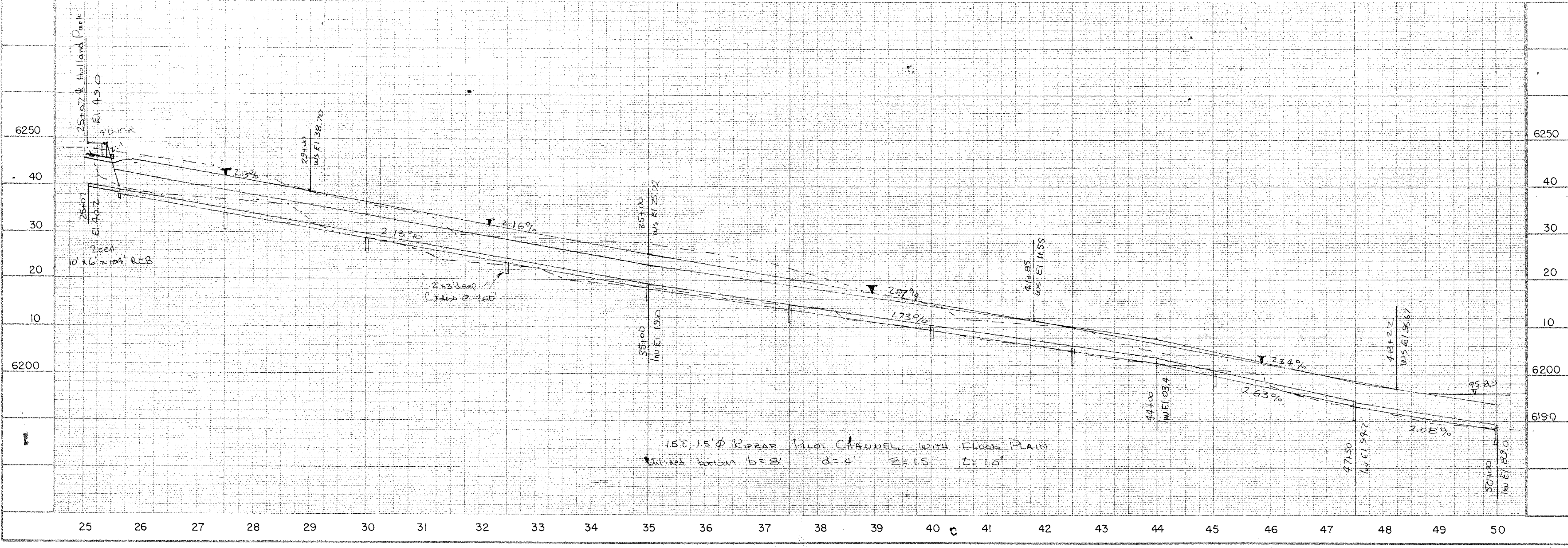
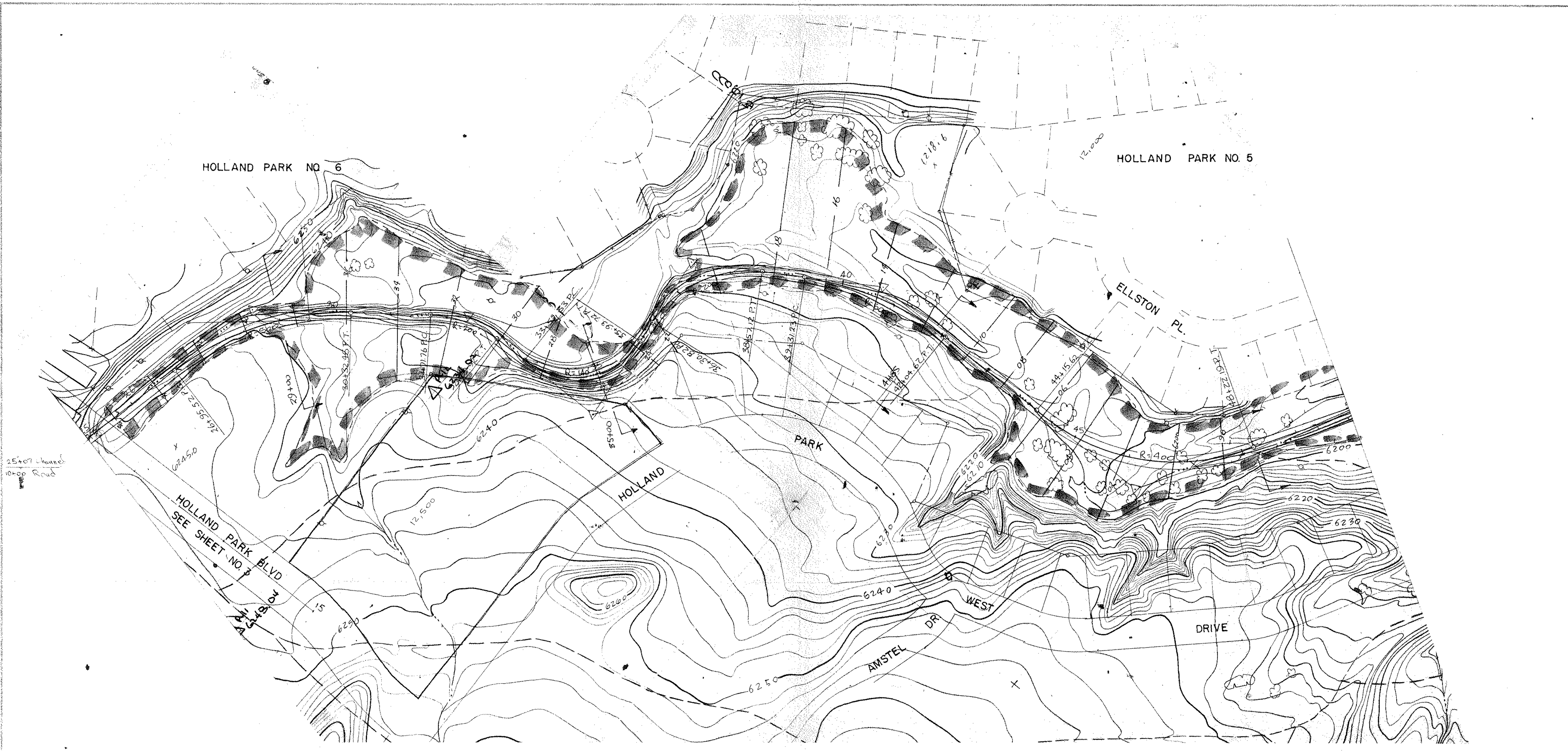
SCALE: Ver. 1"=12' Horiz. 1"=100'

APPROVED BY: *[Signature]* PLAN BY: OEW  
 CHECKED BY: G.E. WILTS RE: 9653 DRAWN BY: OEW

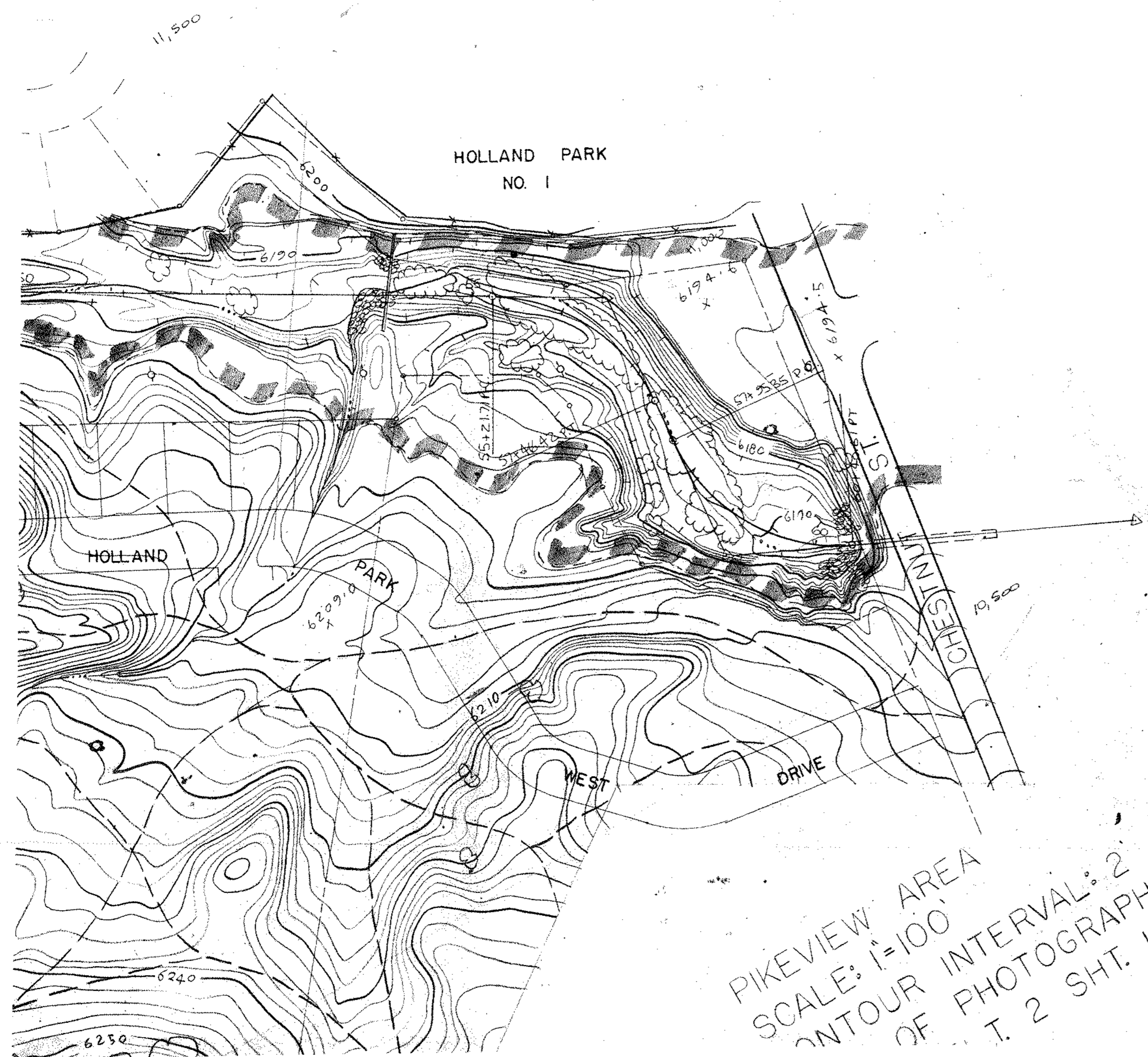
SURVEYED BY: \_\_\_\_\_ CHECKED BY: \_\_\_\_\_

UNITED PLANNING & ENGINEERING  
 916 N. WEBER ST.  
 Colorado Springs, Colorado

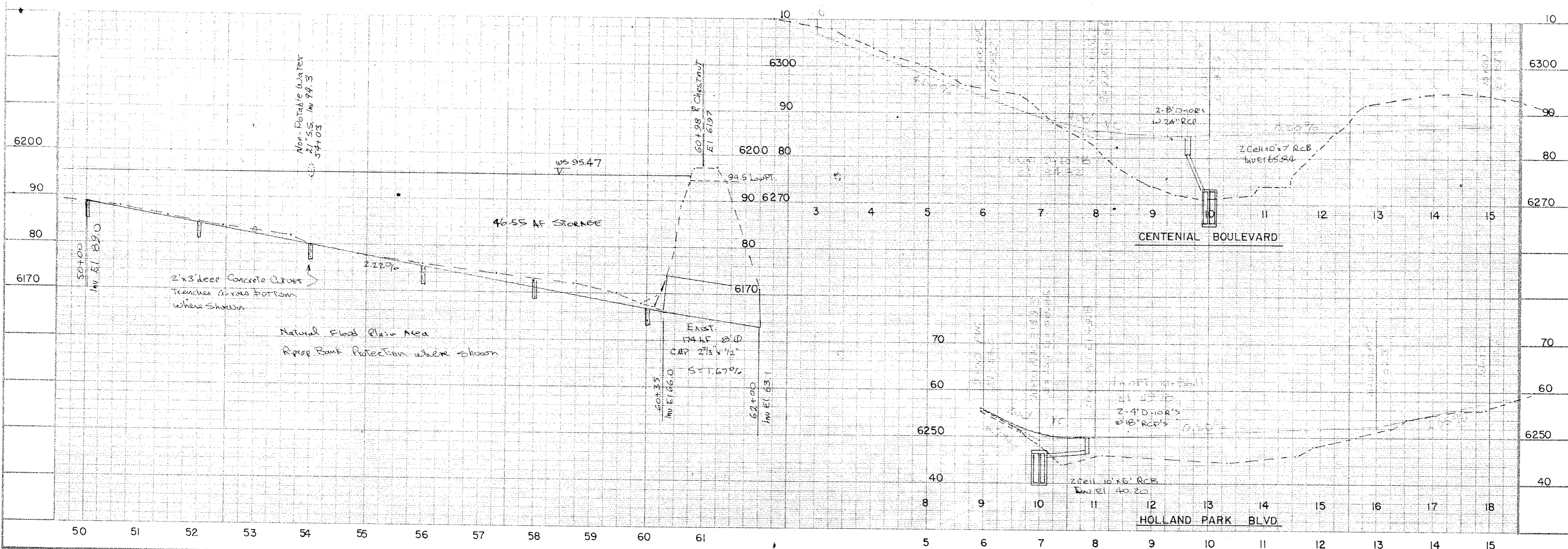
SHEET 2 OF 3







PIKEVIEW AREA  
 SCALE: 1"=100'  
 CONTOUR INTERVAL: 2'  
 PHOTOGRAPHY: 11-29-77  
 T. 2 SHT. 1



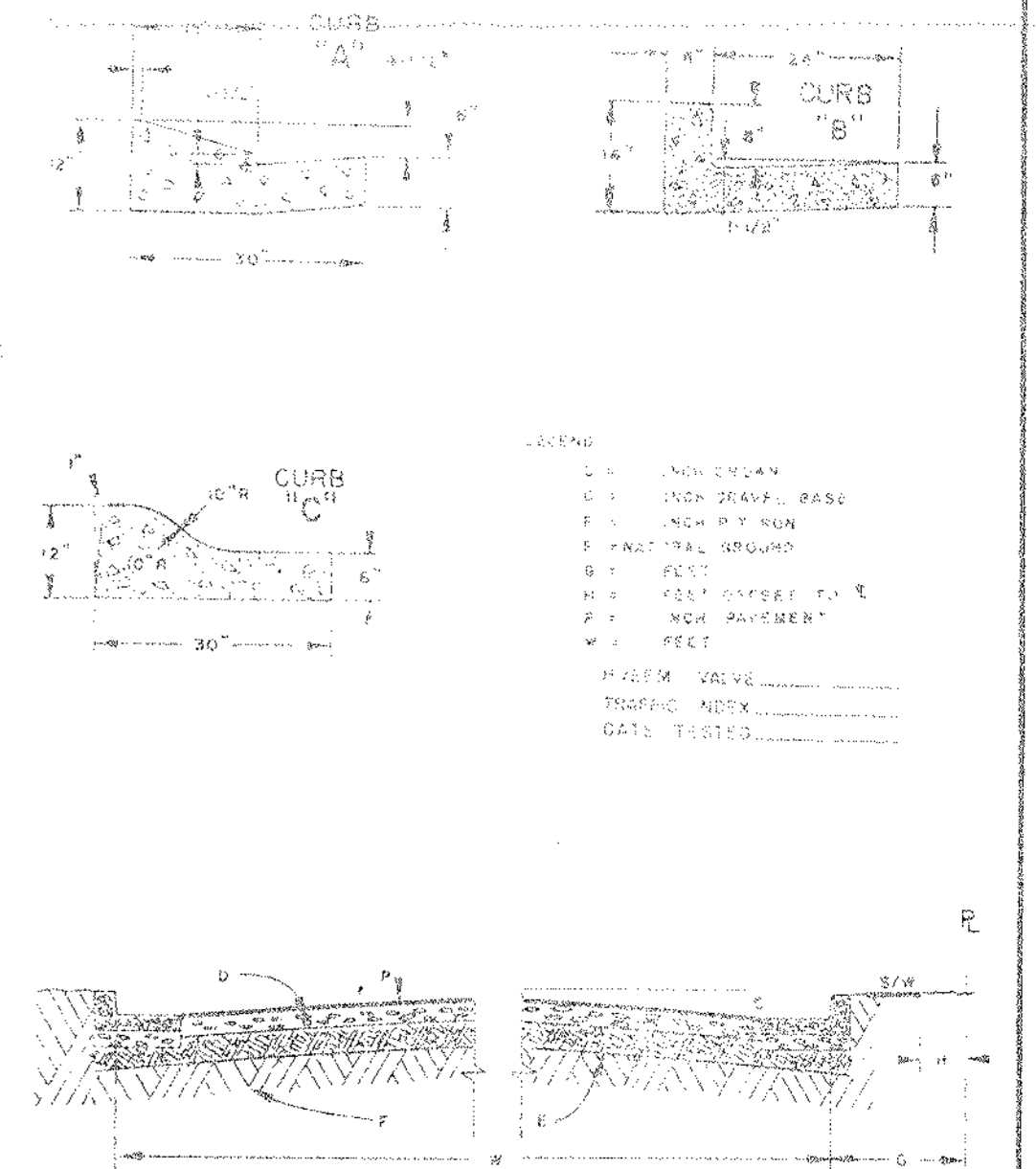
SEWER STATEMENT  
 ANY CHANGES OR ALTERATIONS EFFECTING THE GRADES, ALIGNMENT, ELEVATION AND DEPTH OF COVER OF SEWERS AND APPURTENANCES SHOWN ON THIS DRAWING SHALL BE THE RESPONSIBILITY OF THE DEVELOPER.

SIGNED \_\_\_\_\_  
 APPROVED DATE \_\_\_\_\_  
 SIGNED \_\_\_\_\_  
 SEWER DEPARTMENT

BENCH MARK \_\_\_\_\_

NOTES

1. ALL VERTICAL DATUM APPLIES TO THE TOP OF CURB AS SHOWN UNDER DETAILS.
2. ALL CURB RETURNS WILL HAVE A 10(TEN) FOOT RADIUS UNLESS OTHERWISE NOTED.
3. ALL DIP SLABS WILL BE CONSTRUCTED ACCORDING TO THE SPECIFICATIONS OF THE CITY OF COLORADO SPRINGS, OR AS OTHERWISE APPROVED.
4. STREET PAVING AT ALL DIP SLABS WILL HAVE A CROWN TRANSITION TO MINIMIZE THE DRIVING HAZARD.
5. ALL HORIZONTAL CURB STATIONING IS BASED ON 3' OFFSET BEHIND FACE OF CURB.



ENGINEERING DEPARTMENT  
 CURB AND GUTTER — GRADES  
 APPROVED \_\_\_\_\_  
 DATE \_\_\_\_\_  
 SIGNED \_\_\_\_\_  
 GRADES REVIEWED \_\_\_\_\_  
 DATE \_\_\_\_\_  
 SIGNED \_\_\_\_\_

JOB NO.	77	PRELIMINARY GREENBELT DESIGN
PROJ.	1270	HOLLAND PARK WEST DEVELOPMENT
SCALE:	50+00 TO 60+40.61	
APPROVED BY:	<i>[Signature]</i>	PLAN BY: OEW
CHECKED BY:	O.E. Watts	DRAWN BY: OEW
UNITED PLANNING & ENGINEERING 916 N. WEBER ST. Colorado Springs, Colorado		
SHEET	3	OF 3