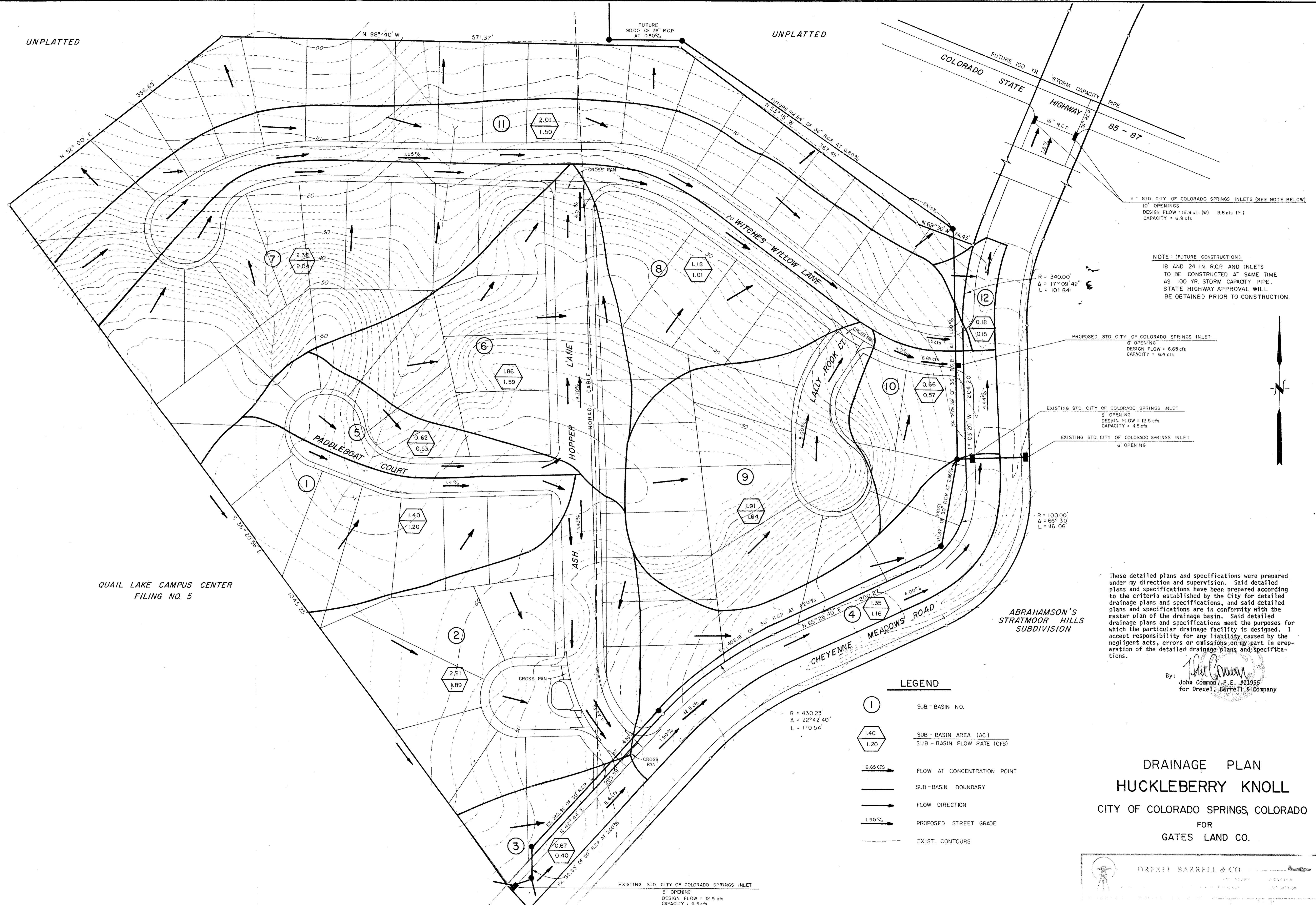


UNPLATTED

UNPLATTED



QUAIL LAKE CAMPUS CENTER
FILING NO. 5

ABRAHAMSON'S
STRATMOOR HILLS
SUBDIVISION

2" STD. CITY OF COLORADO SPRINGS INLETS (SEE NOTE BELOW)
10' OPENINGS
DESIGN FLOW = 12.9 cfs (W) 13.8 cfs (E)
CAPACITY = 6.9 cfs

NOTE: [FUTURE CONSTRUCTION]
18 AND 24 IN. R.C.P. AND INLETS
TO BE CONSTRUCTED AT SAME TIME
AS 100 YR. STORM CAPACITY PIPE.
STATE HIGHWAY APPROVAL WILL
BE OBTAINED PRIOR TO CONSTRUCTION.

PROPOSED STD. CITY OF COLORADO SPRINGS INLET
8' OPENING
DESIGN FLOW = 6.65 cfs
CAPACITY = 6.4 cfs

EXISTING STD. CITY OF COLORADO SPRINGS INLET
5' OPENING
DESIGN FLOW = 12.5 cfs
CAPACITY = 4.8 cfs

EXISTING STD. CITY OF COLORADO SPRINGS INLET
6' OPENING

These detailed plans and specifications were prepared under my direction and supervision. Said detailed plans and specifications have been prepared according to the criteria established by the City for detailed drainage plans and specifications, and said detailed plans and specifications are in conformity with the master plan of the drainage basin. Said detailed drainage plans and specifications meet the purposes for which the particular drainage facility is designed. I accept responsibility for any liability caused by the negligent acts, errors or omissions on my part in preparation of the detailed drainage plans and specifications.

By: *John Common*
John Common, P.E. #11956
for Drexel, Barrett & Company

LEGEND

- (1) SUB - BASIN NO.
- 1.40
1.20 SUB - BASIN AREA (AC.)
SUB - BASIN FLOW RATE (CFS)
- 6.65 cfs FLOW AT CONCENTRATION POINT
- SUB - BASIN BOUNDARY
- FLOW DIRECTION
- 1.90% PROPOSED STREET GRADE
- EXIST. CONTOURS

R = 430.23'
Δ = 22°42'40"
L = 170.54'

EXISTING STD. CITY OF COLORADO SPRINGS INLET
5' OPENING
DESIGN FLOW = 12.9 cfs
CAPACITY = 4.5 cfs

DRAINAGE PLAN
HUCKLEBERRY KNOLL
CITY OF COLORADO SPRINGS, COLORADO
FOR
GATES LAND CO.

DREXEL BARRETT & CO.
REVISOR: [Signature]
DATE: [Signature]