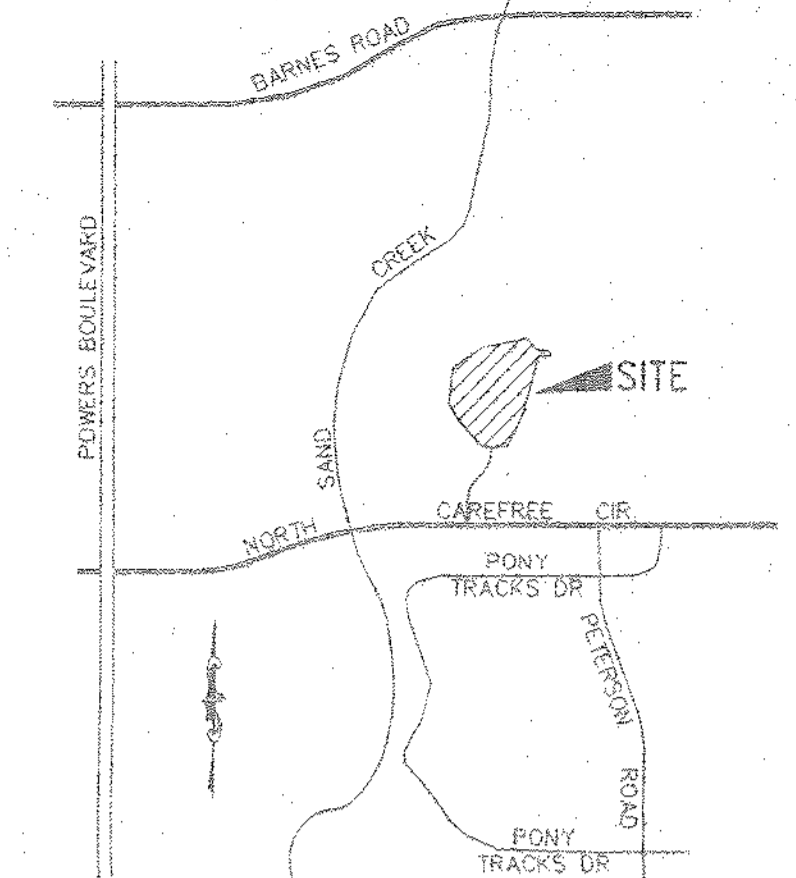
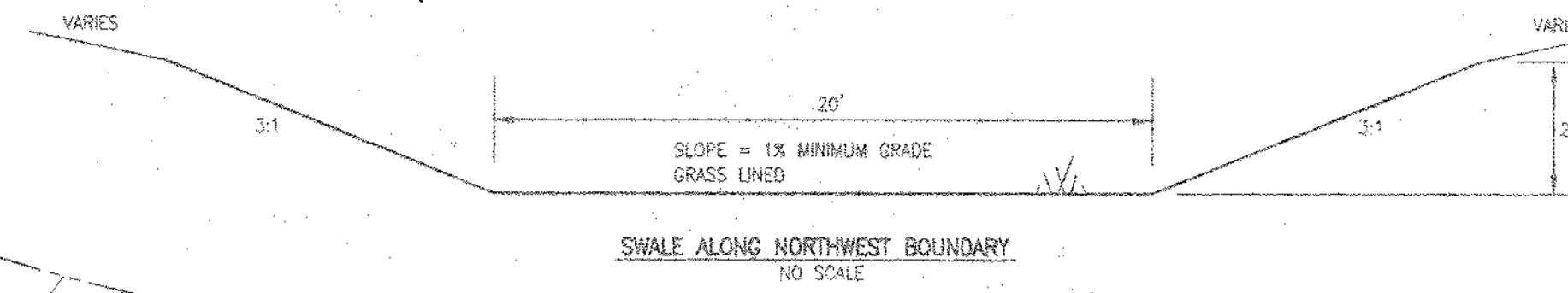


# THE ISLAND AT SPRINGS RANCH

## DEVELOPED DRAINAGE PLAN



VICINITY MAP  
NOT TO SCALE

### LEGEND

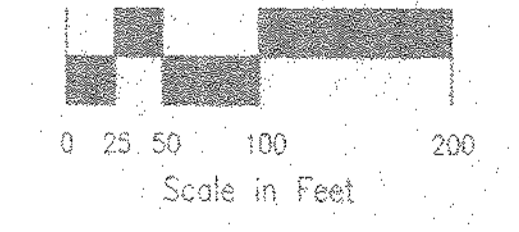
- 6100 EXISTING CONTOURS
- BASIN BOUNDARIES
- D-1** BASIN DESIGNATOR  
BASIN AREA (ACRES)  
0.5, 0.100 (CFS)
- DP #1** DESIGN POINT
- 6510 PROPOSED 2' CONTOURS
- DIRECTION OF FLOW
- PROPOSED INLET

### SUMMARY TABLE

BASIN	AREA (Ac)	Q5 (cfs)	Q100 (cfs)
OS-1	2.0	5.4	10.8
D-1	3.8	9.1	18.4
D-2	5.7	14.0	28.3
D-3	2.3	5.9	12.1
D-4	8.1	19.4	39.7
D-5	1.6	5.0	10.1
D-6	1.7	5.3	10.7
D-7	1.8	6.5	11.9
D-8	0.7	1.8	4.4
D-9	7.1	22.1	44.7
DP#1	9.5	21.7	43.9
DP#2	11.8	24.8	49.6
DP#3	10.1	23.0	46.7
DP#4	21.9	46.0	92.0




1" = 100'



NOT TO BE USED FOR CONSTRUCTION PURPOSES.

FILE: 98101BAS.DWG 7/23/98



**ROCKWELL MINCHOW**  
CONSULTANTS, INC.

ENGINEERING • SURVEYING  
7078 SPRING LAKE SUITE #100  
COLORADO SPRINGS, CO 80907  
(719) 425-2525 • FAX (719) 418-8222

TITLE: THE ISLAND AT SPRINGS RANCH  
DEVELOPED DRAINAGE PLAN

SCALE: 1"=100' DRAWN BY: TDM JOB NO: 96-101

DATE: 7/23/98 CHECKED BY: KOR

