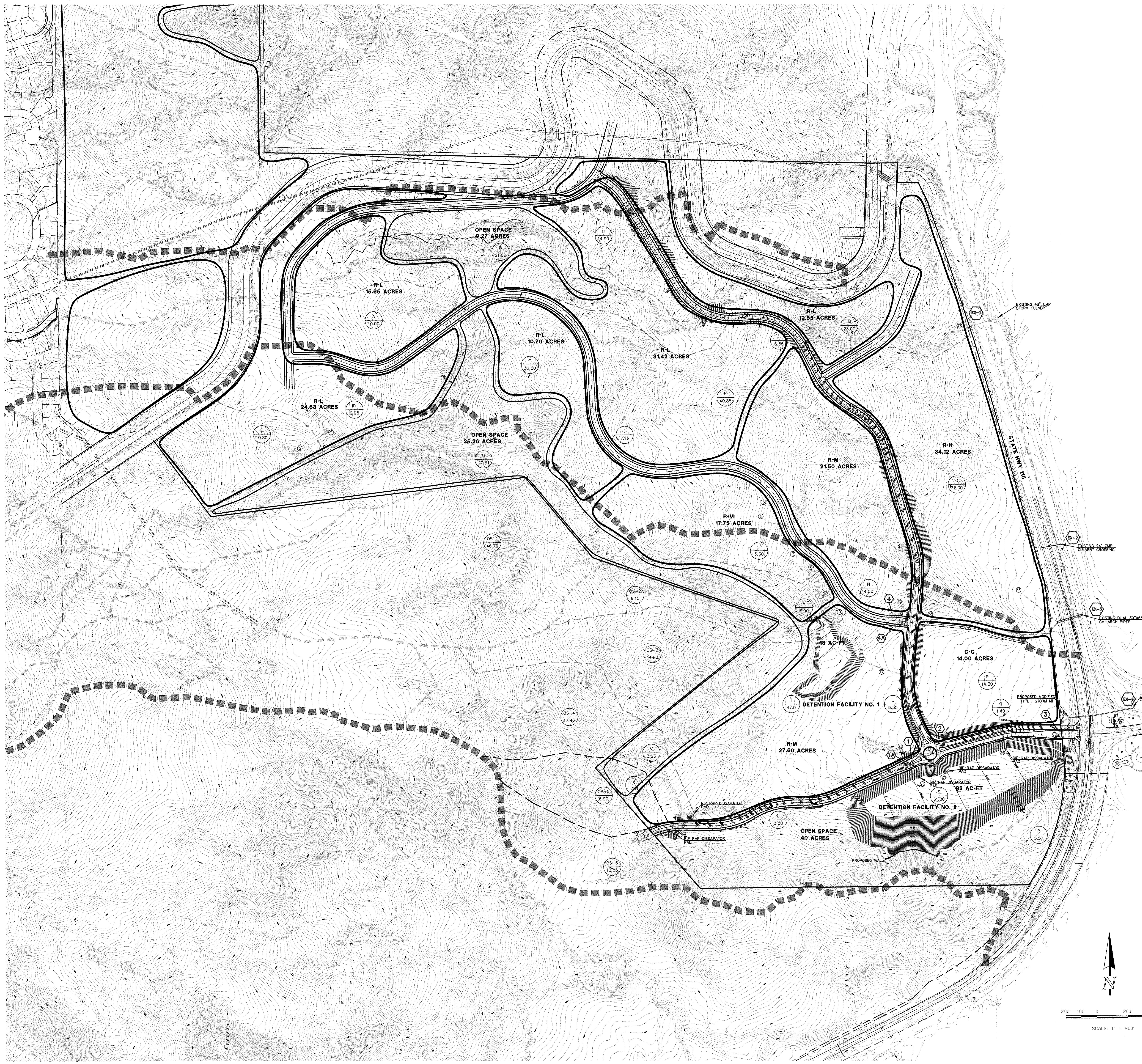


DESCRIPTION	SYMBOL
EXISTING GROUND CONTOUR	6910
PROPOSED FINISHED CONTOUR	6810
BASIN BOUNDARY	---
PROPOSED FLOW DIRECTION	→
EXISTING FLOW	→
DESIGN POINT	③
BASIN IDENTIFIER	BB 100
EXISTING STORM SEWER	---
EXISTING STORM INLET	□
PROPOSED STORM SEWER	---
PROPOSED GRATED INLET	⊞

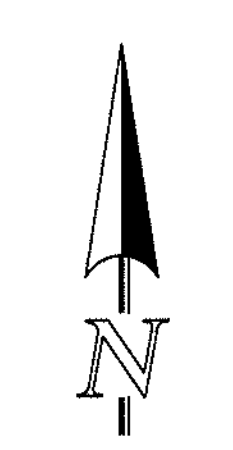
BASIN SUMMARY:

BASIN	Q(5)-CFS	Q(100)-CFS
A	10	24
B	19	36
C	8	19
D	10	25
E	11	29
F	38	65
G	9	23
H	8	19
I	21	51
J	41	95
K	20	52
L	33	76
M	5	11
N	41	89
O	36	63
P	5	7
Q	14	40
R	45	102
S	9	15
T	2	6
U	2	4
V	75	211
W	72	207
OS-1	16	39
OS-2	18	43
OS-3	16	39
OS-4	17	41
OS-5	18	43
OS-6	17	41
OS-7	18	43
OS-8	17	41
OS-9	18	43
OS-10	17	41

DESIGN POINT	FLOW (CFS)
①	Q5 = 15 CFS Q100 = 24 CFS
①A	Q5 = 5 CFS Q100 = 8 CFS
②	Q5 = 10 CFS Q100 = 15 CFS
③	Q5 = 4 CFS Q100 = 7 CFS
④	Q5 = 11 CFS Q100 = 18 CFS
④A	Q5 = 11 CFS Q100 = 18 CFS
⑤	Q5 = 73 CFS Q100 = 166 CFS
⑤A	Q5 = 93 CFS Q100 = 210 CFS
⑤B	Q5 = 280 CFS Q100 = 622 CFS
⑤C	Q5 = 206 CFS Q100 = 458 CFS

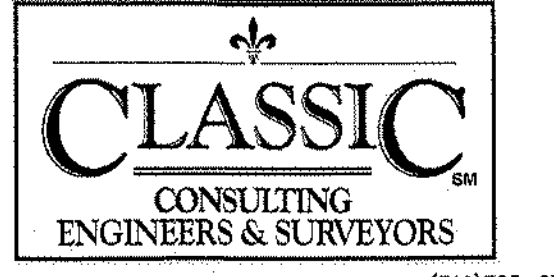


FORT CARSON



SCALE: 1" = 200'

EXHIBIT
LOWER JL RANCH
JOB NO. 2004.10
OCTOBER 3, 2002
SHEET 1 OF 1



6385 Corporate Drive, Suite 300
Colorado Springs, Colorado 80918
(719) 785-0790
(719) 785-0799 (Fax)