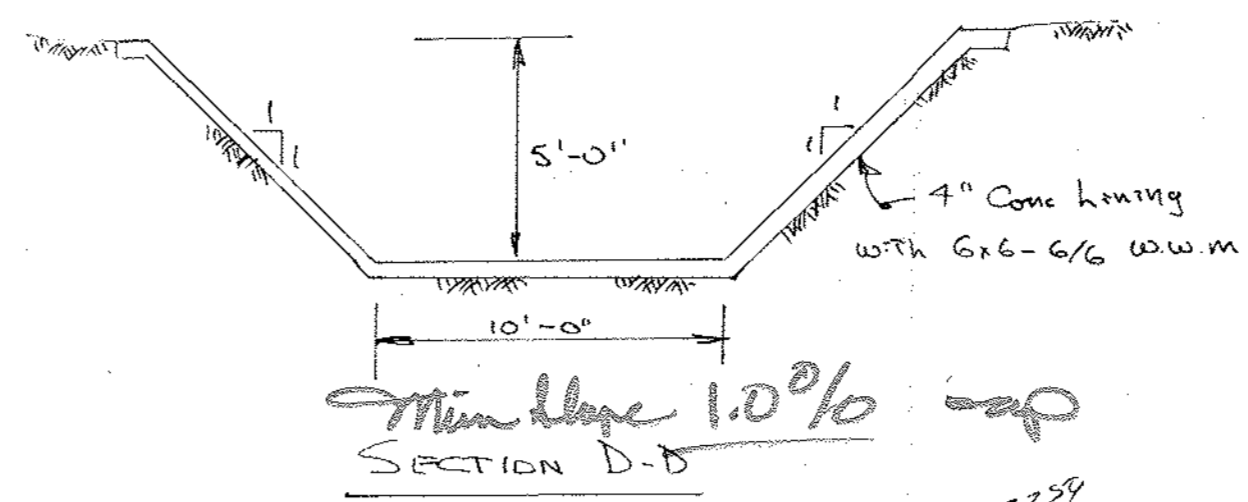
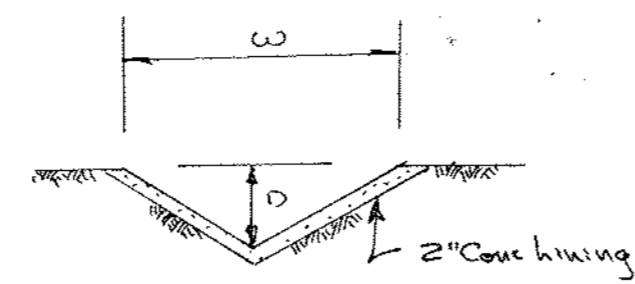
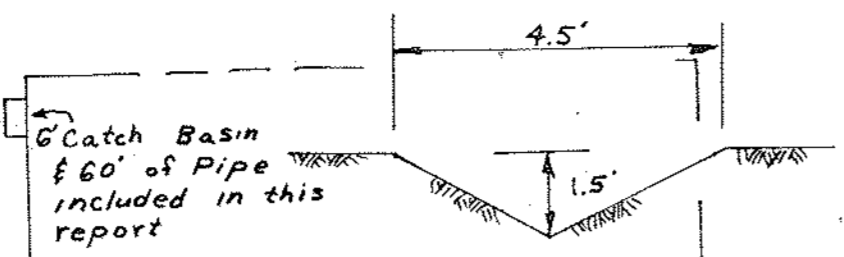


ACADEMY BLVD.

1'-0" Min. Free Board is Provided



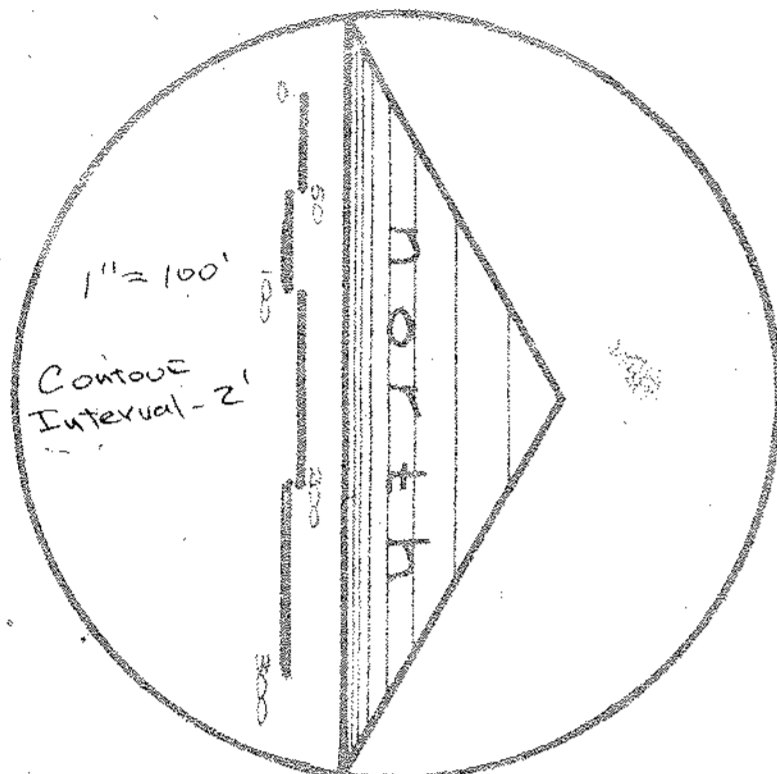
P.B.C. COMMERCIAL AREA S.D. ALICES

SECTION B-B w=4' D=1'  
SECTION C-C w=6' D=1'-6"

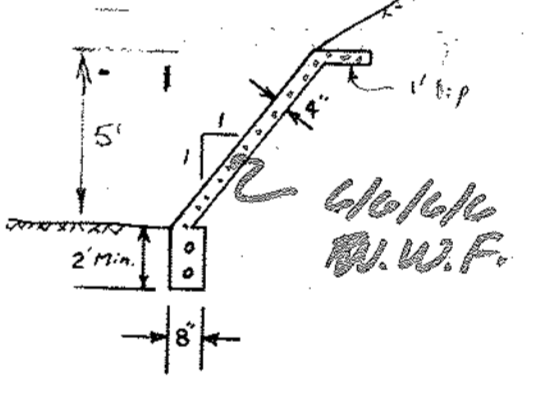
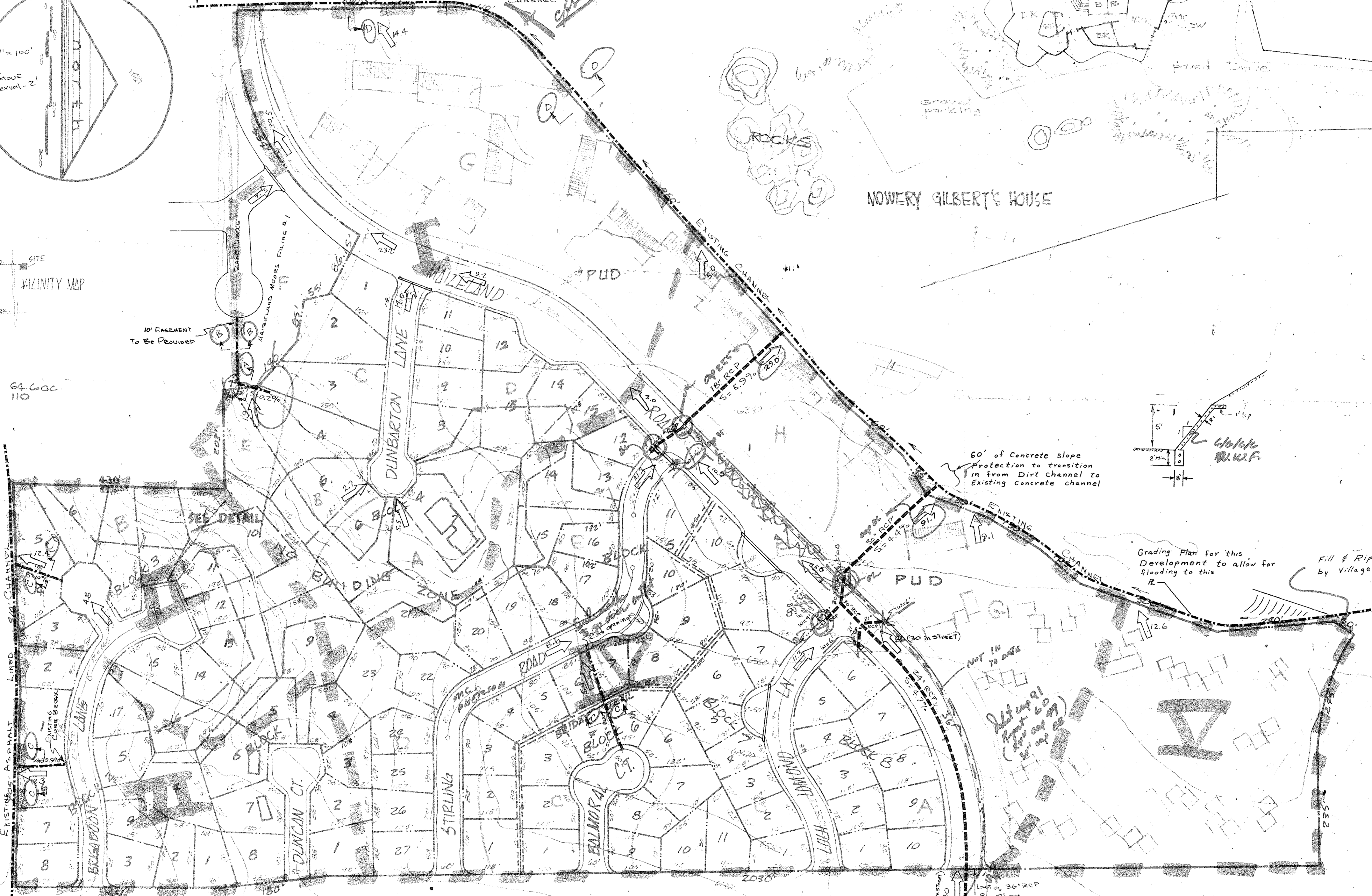
*At this site, this will have to come forward!*

SPROUDE RIP RAP (50' Section)  
1/2 of RCB included per this report

END EXISTING CONCRETE LINED CHANNEL



DATA  
TOTAL AC. 64.6 AC.  
NO. OF LOTS 110



Grading Plan for this development to allow for flooding to this

Fill & Rip to be accomplished by Village Seven Developer

LEGAL:  
A Portion of Sec. 35, T13S, R66W, and  
Portion of Sec 2 T14'S, R66W, of the 6<sup>th</sup> P.M.,  
El Paso County, Colorado

DEW 4-29-71 Rev 5-11-71 PCC

- Major Basin
- Minor Basin
- CULVERT - SIZE & TYPE SHOWN
- OPEN CHANNEL DITCH - AS SHOWN
- CATCH BASIN - SIZE AS SHOWN
- Flow in CES (Arrows in Street/Block)
- Cross Pans

# DRAINAGE PLAN FOR

# PRELIMINARY DEVELOPMENT PLAN FOR

# MAIZELAND MOORS

RAYMOND MCPHERSON 2525 ACADEMY BLVD. COLORADO SPRINGS, COLORADO

**UNITED ENGINEERS**  
 WESTERN  
 planner - Chuck Helenberg  
 date 2-16-71  
 illustrator - Dean Mabe