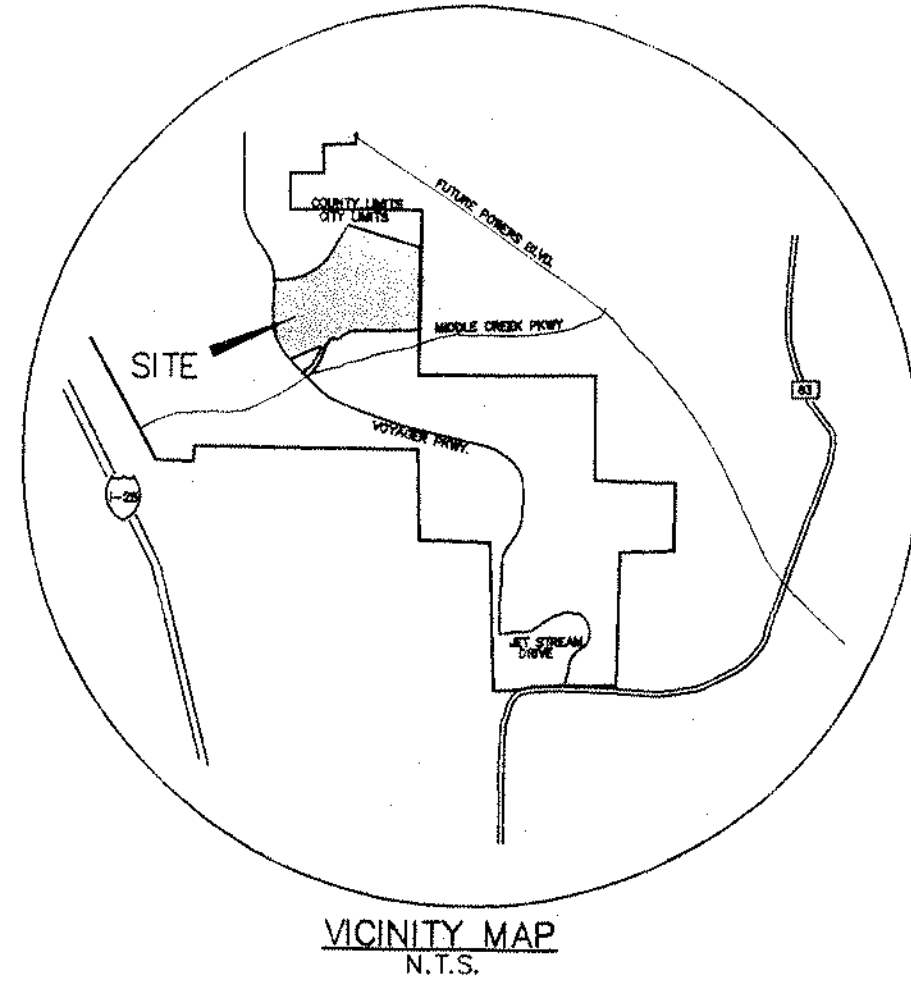


MIDDLE CREEK MANOR @ NORTHGATE

CITY OF COLORADO SPRINGS, COUNTY OF EL PASO, STATE OF COLORADO



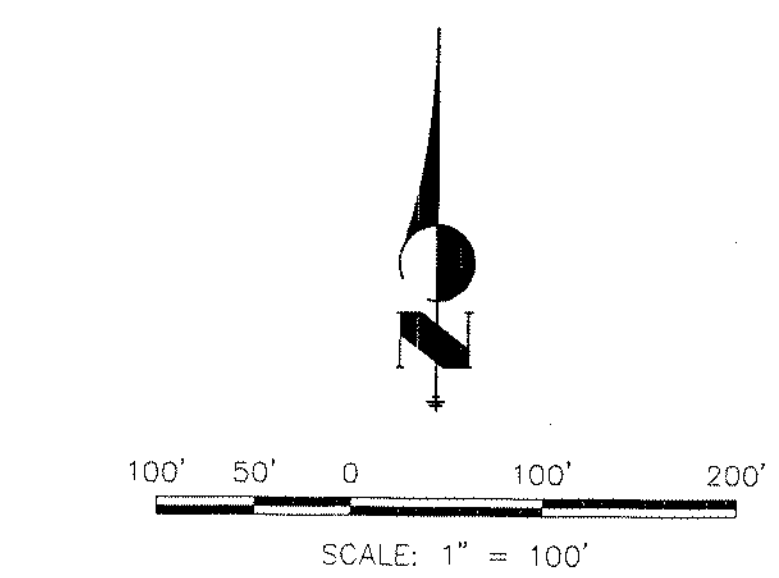
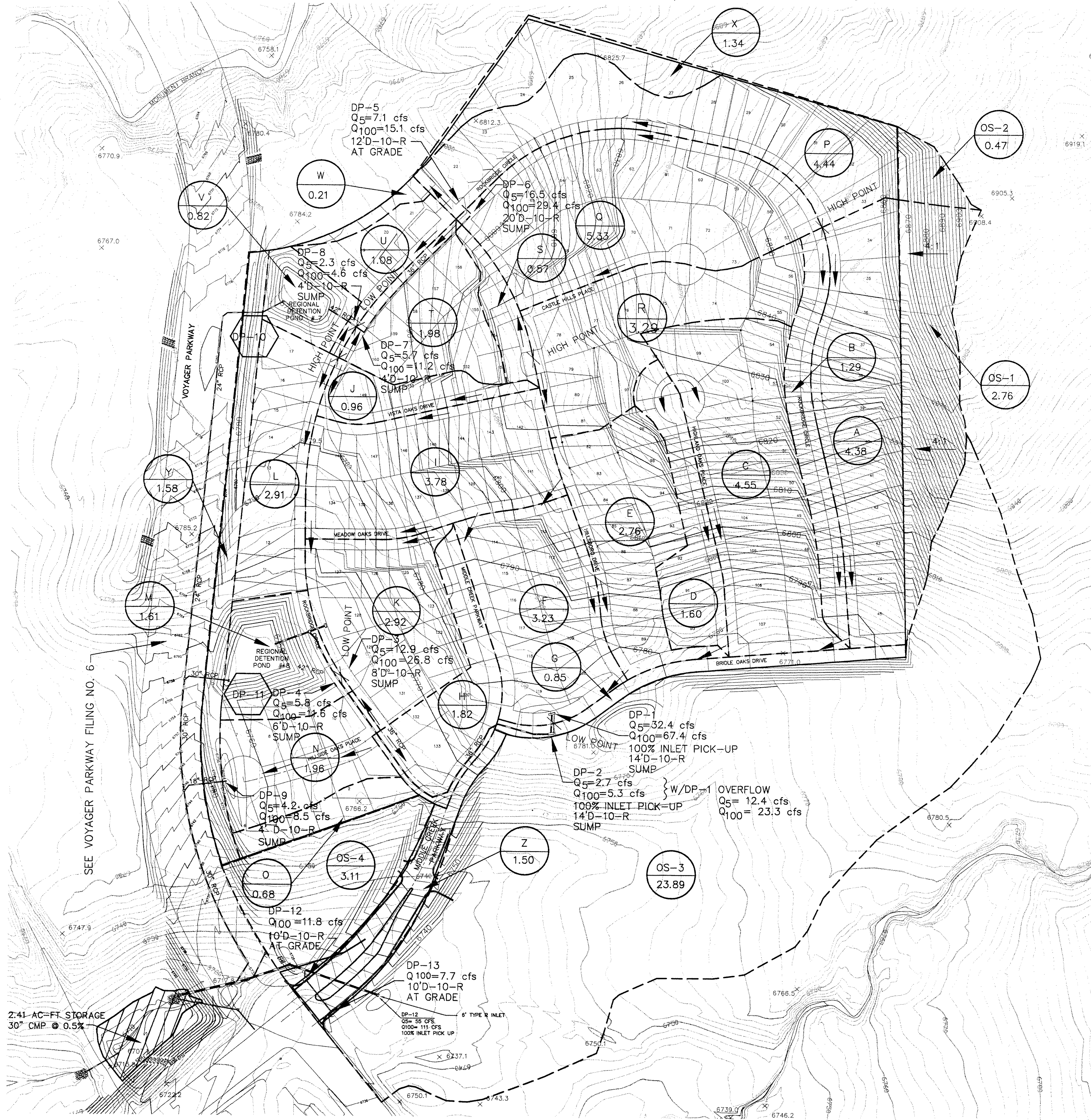
BASIN	AREA (ACRES)	Q ₅ (CFS)	Q ₁₀₀ (CFS)
A	4.38	6.3	13.5
B	1.29	4.2	8.1
C	4.55	8.5	17.4
D	1.60	3.3	6.9
E	2.76	5.8	11.8
F	3.23	6.8	13.8
G	0.85	2.7	5.3
H	1.82	3.8	7.8
I	3.78	7.9	16.1
J	0.96	2.5	5.0
K	2.92	6.0	12.1
L	2.91	5.8	11.6
M	1.61	2.1	5.1
N	4.96	4.2	8.5
O	0.68	1.8	3.5
P	4.44	6.4	13.7
Q	5.33	8.2	17.3
R	3.29	6.9	14.0
S	0.57	1.8	3.6
T	1.98	4.0	8.2
U	1.08	2.3	4.6
V	0.82	0.9	2.1
W	0.21	0.5	1.1
X	1.34	2.2	4.6
Y	1.58	1.7	4.1
Z	1.50	7.0	12.8
OS-1	2.76	5.1	10.6
OS-2	0.47	0.8	1.8
OS-3	23.89	54.5	110.4
OS-4	3.11	13.4	24.2

DEVELOPED FLOWS

DESIGN POINT	Q ₅ (CFS)	Q ₁₀₀ (CFS)
DP-1	32.4	67.4
DP-2	2.8	5.3
DP-3	44.1	92.9
DP-4	5.8	11.6
DP-5	7.1	15.1
DP-6	16.5	29.4
DP-7	5.7	11.2
DP-8	2.3	4.6
DP-9	4.2	8.5
DP-10	31.1	64.6
DP-11	54.2	113.7
DP-12	54.5	110.4

HISTORIC FLOWS

DESIGN POINT	Q ₅ (CFS)	Q ₁₀₀ (CFS)
DP-10	10	30
DP-11	17	39



LEGEND

DESCRIPTION	SYMBOL
EXISTING GROUND CONTOUR	8910
PROPOSED FINISHED CONTOUR	8910
SUBDIVISION BOUNDARY	---
LOT LINE	---
BASIN BOUNDARY	---
DIRECTION OF DRAINAGE	→
BASIN IDENTIFIER AREA IN ACRES	A 10.1
DETENTION DESIGN POINT	DPX
PROPOSED STORM SEWER	---

UNTIL SUCH TIME AS THESE DRAWINGS ARE APPROVED BY AGENCIES, THEIR USE ONLY FOR APPROVES. THEIR USE ONLY FOR WRITTEN AUTHORIZATION.

48 HOURS BEFORE YOU DIG,
CALL UTILITY LOCATORS
1-800-922-1987
CITY OF COLORADO SPRINGS, DEPT. OF UTILITIES
GAS, ELECTRIC, WATER AND WASTEWATER

JR Engineering, Ltd.
4985 North 30th Street
Colorado Springs, Colorado 80919
(719) 598-2583 • FAX (719) 528-6813

NO.	DATE	REVISION
1	8-4-98	REVISED LOT LAYOUT
2	8-27-98	REVISED GRADING ON ADJACENT PROPERTY

SCALE: 1"=100'
DATE: 8-4-98
DES. BY: ABE
CHK. BY: MJP
DWN. BY: MJP

MIDDLE CREEK MANOR @ NORTHGATE
BASIN MAP

SHEET 1 OF 1
JOB NO. 896600