

PREPARED BY:

DREXEL, BARRELL & CO.
 Engineers - Surveyors
 3 SOUTH 7TH STREET
 COLORADO SPRINGS, COLORADO 80905
 CONTACT: TIM D. MCCONNELL, P.E.
 (719) 260-0887
 BOULDER • COLORADO SPRINGS
 GRAND JUNCTION

CLIENT:

CHEYENNE MOUNTAIN DEVELOPMENT COMPANY, LLC
 P.O. BOX 60068
 COLORADO SPRINGS, CO 80960
 (719) 475-7474
 CONTACT: ROBERT C. IRWIN

MOUNTAIN VALLEY PRESERVE CONCEPT PLAN
 6005, 6085 & 6115 N. MARKSHEFFEL ROAD
 COLORADO SPRINGS, COLORADO

ISSUE	DATE
INITIAL ISSUE	3/12/15
LATEST ISSUE	6/26/15

DESIGNED BY: SBN
 DRAWN BY: SBN
 CHECKED BY: TM
 FILE NAME: DRAINAGE PLAN

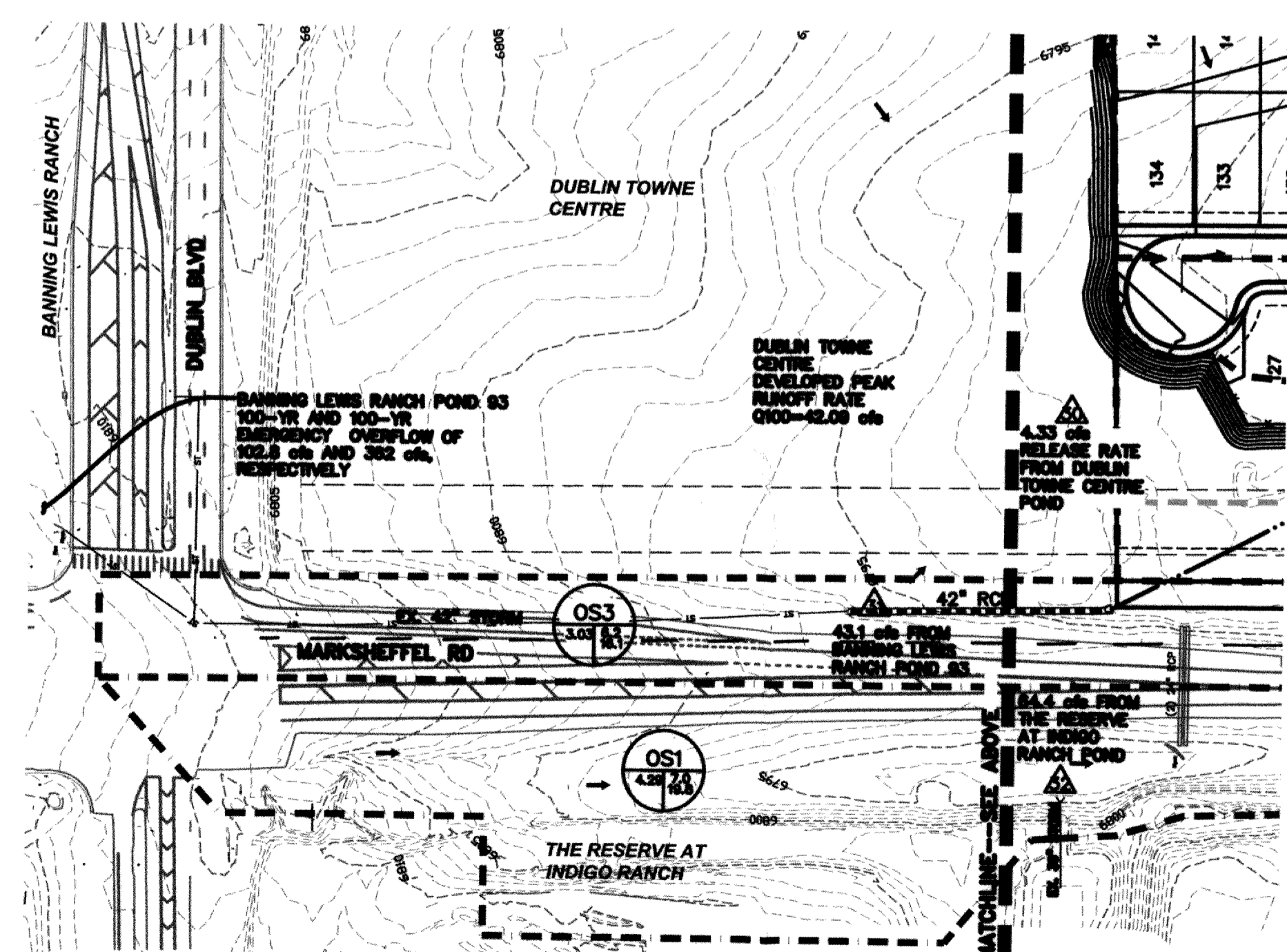
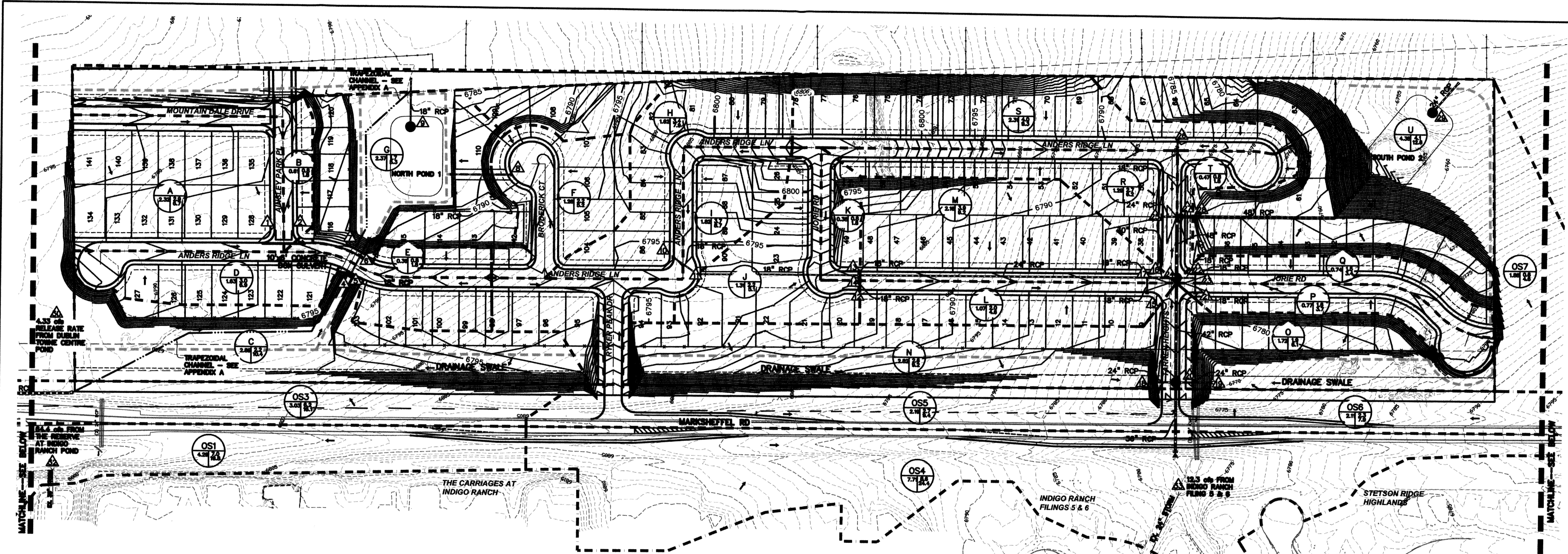
DRAWING SCALE:
 HORIZONTAL: 1"=100'
 VERTICAL: N/A

PROPOSED DRAINAGE PLAN

PROJECT NO. 20534-03CSCV
 DRAWING NO.

DR-2

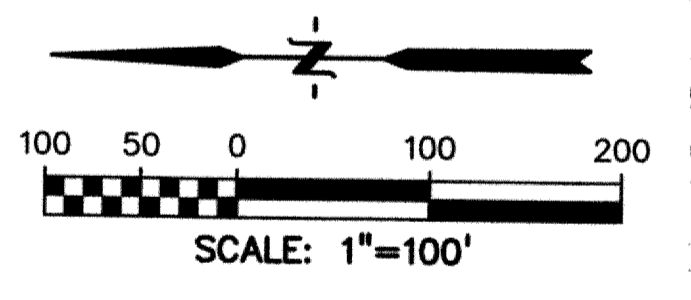
SHEET: 2 OF 2



DESIGN POINTS

POINT	Q5 (cfs)	Q100 (cfs)	POINT	Q5 (cfs)	Q100 (cfs)
DP-1	2.9	6.7	DP-26	4.0	9.3
DP-2	3.6	8.5	DP-27	40.9	101.2
DP-3	NOT USED		DP-28	42.4	103.3
DP-4	106.1	174.7	DP-29	47.2	120.5
TOTAL EMERGENCY OVERFLOW=		579.8	DP-30		4.33
DP-5	3.0	6.9	DP-31		59.7
DP-6	7.3	17.1	EMERGENCY OVERFLOW= 579.8		
DP-7	106.1	579.8	DP-32	33.6	84.2
DP-8	2.2	5.2	DP-33	14.5	36.7
DP-9	11.2	27.6			
DP-10	3.4	7.9			
DP-11	6.7	15.7			
DP-12	2.2	5.1			
DP-13	0.8	1.8			
DP-14	8.8	20.6			
DP-15	2.0	4.6			
DP-16	3.9	9.2			
DP-17	12.9	30.1			
DP-18	5.4	18.5			
DP-19	4.1	13.9			
DP-20	23.2	70.5			
DP-21	1.6	3.7			
DP-22	1.5	3.4			
DP-23	3.0	6.9			
DP-24	36.4	90.6			
DP-25	2.7	6.2			

RELEASE RATE



LEGEND

- EX. MINOR CONTOUR
- EX. MAJOR CONTOUR
- PR. MINOR CONTOUR
- PR. MAJOR CONTOUR
- STORM DRAIN
- ROAD CENTERLINE
- CURB FLOWLINE
- R.O.W.
- EXST. EASEMENT
- PR. TRAIL SYSTEM/POND ACCESS
- BASIN BOUNDARY
- FLOW DIRECTION
- DESIGN POINT
- BASIN
- Q5
- Q100

