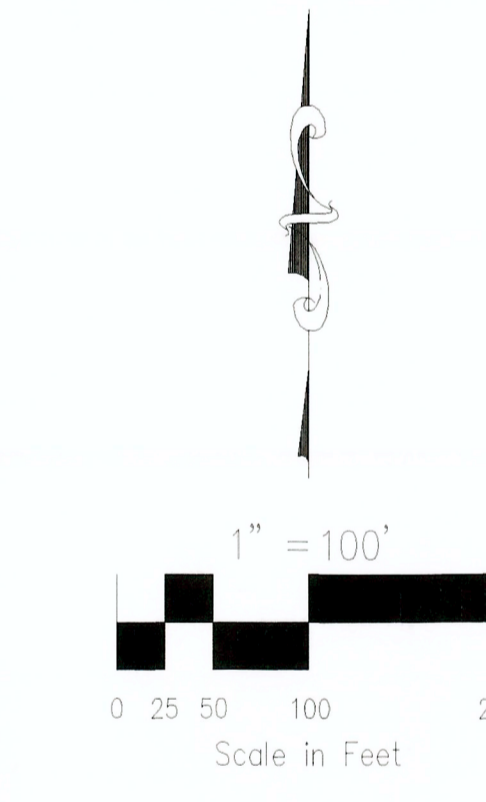


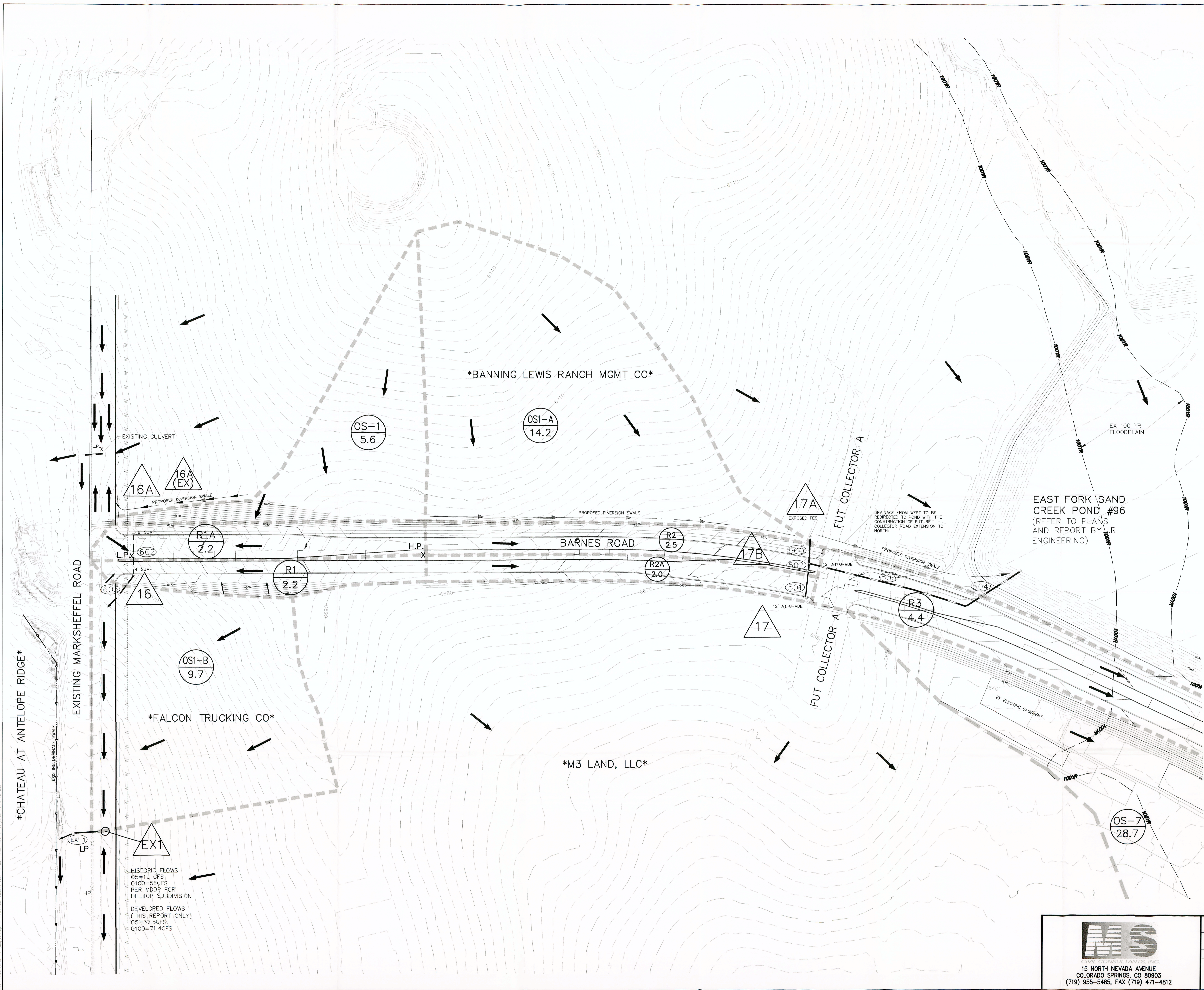
KEY MAP
NTS

PIPE SUMMARY		
PIPE	SIZE	Q5/Q100
602	30" RCP	13.4/27.1
603	36" RCP	22.8/44.8
500	42" RCP	25.3/52.5
501	18" RCP	3.8/5.3
502	24" RCP	5.1/8.6
503	42" RCP	37.9/76.8
504	42" RCP	36.8/74.2
401	18" RCP	1.9/3.9
402	18" RCP	4.3/9.2
403	24" RCP	5.7/12.1
404	18" RCP	3.3/7.0
405	24" RCP	9.5/19.8
406	18" RCP	1.7/3.5
407	18" RCP	1.5/3.1
408	36" RCP	12.4/25.9
409	18" RCP	1.2/2.1
410A	42" RCP	38.8/80.5
410	30" RCP	12.3/27.8
411	24" RCP	4.1/9.8
412	42" RCP	51.6/110.0
413	54" RCP	60.0/127.2
414A	36" RCP	28.9/60.1
414	48" RCP	48.1/102.3
415	18" RCP	3.9/8.1
416	48" RCP	50.9/108.1
417	60" RCP	110.0/233.8
418	30" RCP	10.0/20.5
419	36" RCP	13.5/28.8
419A	36" RCP	23.4/47.1
420	60" RCP	109.5/232.4
301	18" RCP	3.2/4.8
302	18" RCP	3.5/6.1
303	24" RCP	6.7/10.9
305	18" RCP	3.9/7.8
306	24" RCP	10.7/18.7
307	36" RCP	13.5/31.8
308	42" RCP	23.2/48.8
309	54" RCP	37.9/79.3
201	36" RCP	16.2/35.9
202	18" RCP	0.7/1.4
203	36" RCP	16.8/37.2
204	18" RCP	4.6/7.8
205	36" RCP	21.7/44.5
206	36" RCP	15.6/34.3
207	30" RCP	11.3/24.0
208	36" RCP	44.8/95.9
101	18" RCP	4.4/7.2
102	24" RCP	5.9/13.2
103	24" RCP	10.2/20.1
104	36" RCP	18.9/42.0
105	18" RCP	0.8/1.7
106	36" RCP	29.4/62.9
107	30" RCP	8.7/18.7
108	42" RCP	38.1/81.5
EX-1	48" RCP	43.9/88.9



LEGEND

	BASIN LABEL ACREAGE
	PIPE REFERENCE LABEL
	SURFACE DESIGN POINT
	FLOW DIRECTION
	BASIN BOUNDARY
	EXISTING CONTOUR
	PROPOSED CONTOUR
	STORM SEWER PIPE
	CROSSSPAN
	INLET
	MANHOLE
	FLARED END SECTION
	PHASE LINE



HISTORIC FLOWS
Q5=19 CFS
Q100=58CFS
PER MODP FOR
HILLTOP SUBDIVISION

DEVELOPED FLOWS
(THIS REPORT ONLY)
Q5=37.5CFS
Q100=71.4CFS

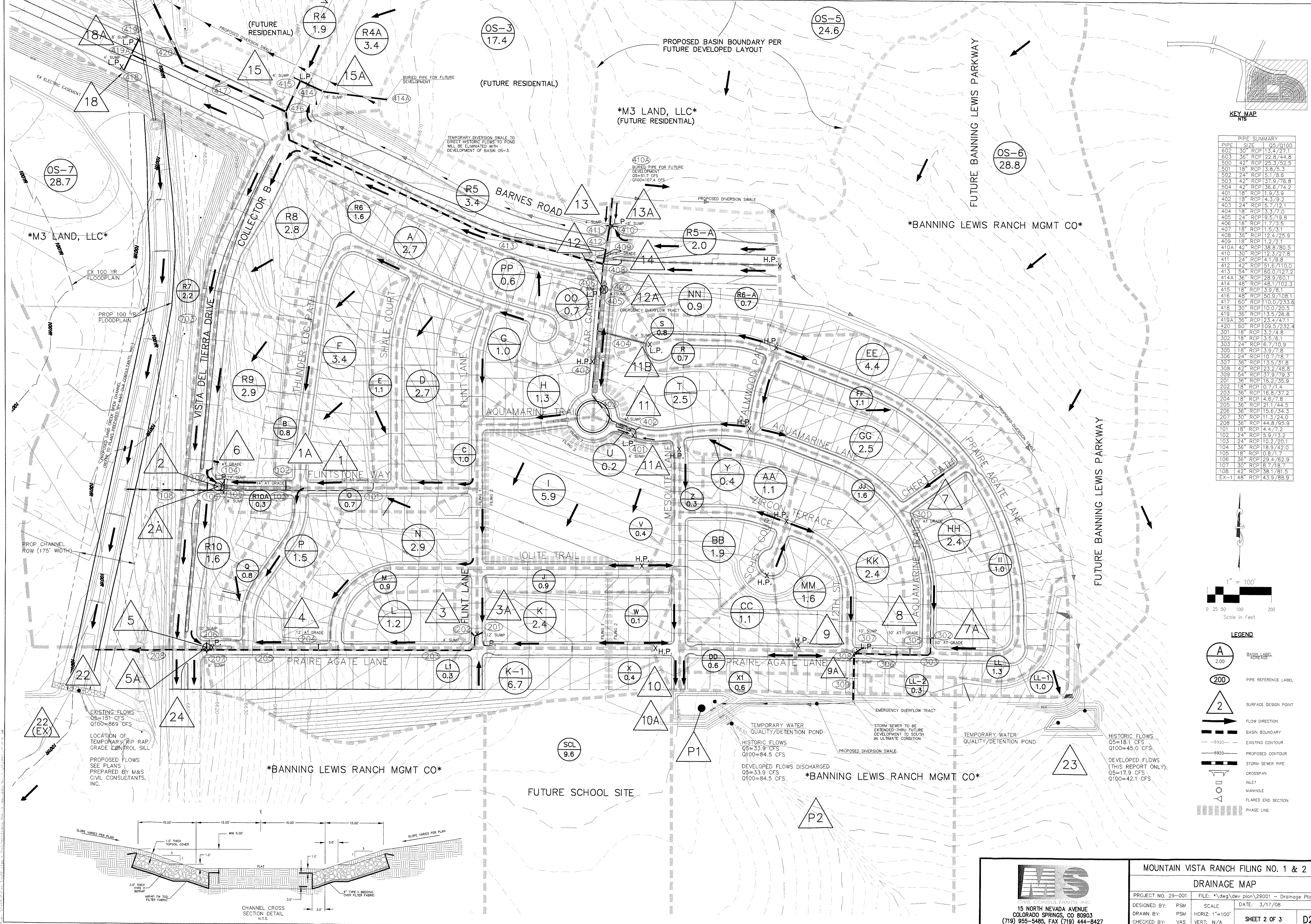
MS
CIVIL CONSULTANTS, INC.
15 NORTH NEVADA AVENUE
COLORADO SPRINGS, CO 80903
(719) 955-5485, FAX (719) 471-4812

MOUNTAIN VISTA RANCH FILING NO. 1 & 2

DRAINAGE MAP

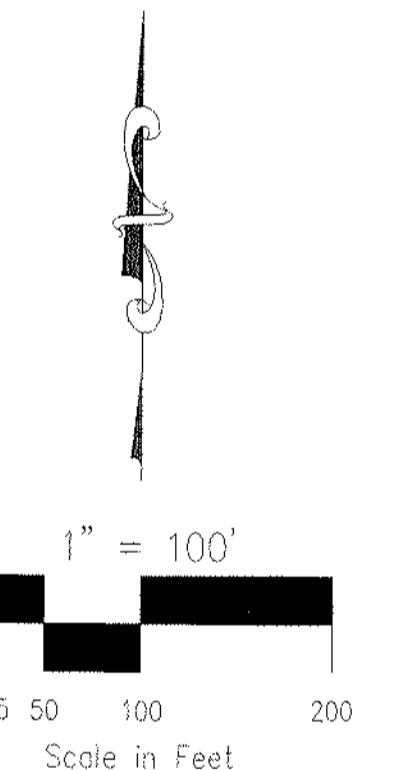
PROJECT NO. 29-001 FILE: *dwg\dev plan\29001 - Drainage Plan
DESIGNED BY: PSM SCALE: DATE: 3/17/08
DRAWN BY: PSM HORIZ: 1"=100'
CHECKED BY: VAS VERT: N/A

SHEET 1 OF 3 D1



PIPE SUMMARY

PIPE	SIZE	OS/Q100
602	30" RCP	13.7/27.1
603	36" RCP	22.8/44.8
500	42" RCP	25.3/52.5
501	18" RCP	3.8/5.3
502	24" RCP	5.1/7.6
503	42" RCP	37.9/76.8
504	42" RCP	36.7/74.2
401	18" RCP	1.9/3.9
402	18" RCP	4.3/9.2
403	24" RCP	5.7/12.1
404	18" RCP	3.3/7.0
405	24" RCP	9.5/19.8
406	18" RCP	1.7/3.5
407	18" RCP	1.5/3.1
408	36" RCP	12.4/25.9
409	18" RCP	1.2/2.1
410A	42" RCP	38.8/80.5
410	30" RCP	12.3/27.8
411	24" RCP	4.1/9.8
412	42" RCP	51.6/110.0
413	54" RCP	60.0/127.2
414A	36" RCP	28.9/60.1
414	48" RCP	48.1/102.3
415	18" RCP	3.9/7.8
416	48" RCP	50.9/108.1
417	60" RCP	110.0/233.6
418	30" RCP	10.0/20.5
419	36" RCP	13.5/26.8
419A	36" RCP	23.4/47.1
420	60" RCP	109.5/232.4
301	18" RCP	3.2/4.8
302	18" RCP	3.5/6.1
303	24" RCP	6.7/10.9
305	18" RCP	3.9/7.8
306	24" RCP	10.7/18.7
307	36" RCP	13.5/31.8
308	42" RCP	23.7/48.8
309	54" RCP	37.9/79.3
201	36" RCP	16.2/35.9
202	18" RCP	0.7/1.4
203	36" RCP	16.8/37.2
204	18" RCP	4.6/7.8
205	36" RCP	21.7/44.5
206	36" RCP	15.6/34.3
207	30" RCP	11.3/24.0
208	36" RCP	44.8/95.9
101	18" RCP	4.4/7.2
102	24" RCP	5.9/13.2
103	24" RCP	10.2/20.1
104	36" RCP	18.9/42.0
105	18" RCP	0.8/1.7
106	36" RCP	29.4/62.9
107	30" RCP	8.7/18.7
108	42" RCP	38.1/81.5
EX-1	48" RCP	43.9/88.9



- LEGEND**
- A BASIN LABEL
 - 200 PIPE REFERENCE LABEL
 - 2 SURFACE DESIGN POINT
 - FLOW DIRECTION
 - BASIN BOUNDARY
 - EXISTING CONTOUR
 - PROPOSED CONTOUR
 - STORM SEWER PIPE
 - CROSSSPAN
 - INLET
 - MANHOLE
 - FLARED END SECTION
 - PHASE LINE

EXISTING FLOWS
 OS=151 CFS
 Q100=869 CFS

LOCATION OF TEMPORARY RIP RAP GRADE CONTROL SILL

PROPOSED FLOWS
 SEE PLANS
 PREPARED BY M&S CIVIL CONSULTANTS, INC.

TEMPORARY WATER QUALITY/DETENTION POND

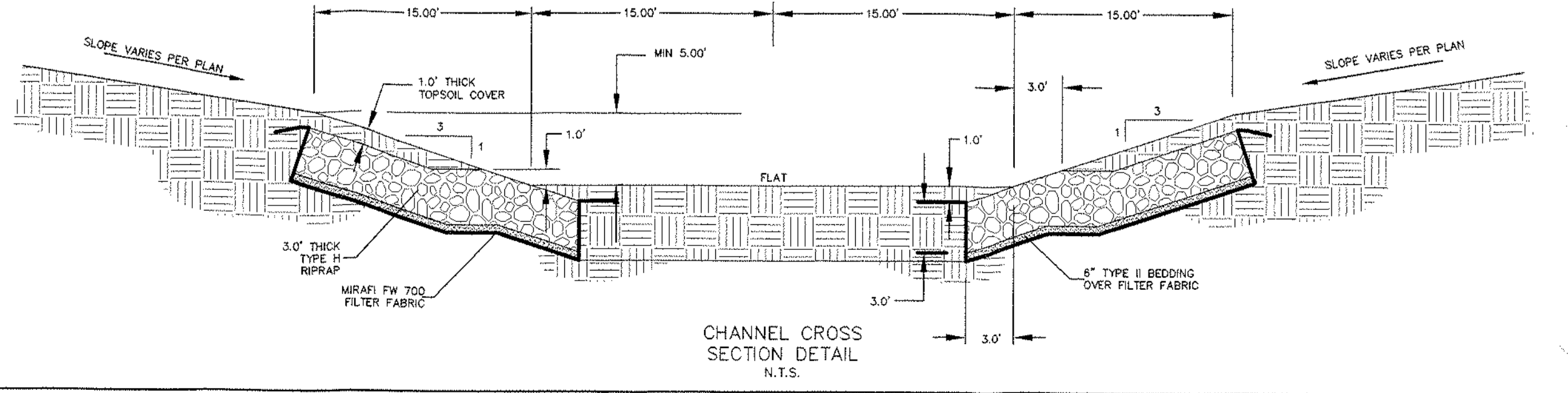
HISTORIC FLOWS
 OS=33.9 CFS
 Q100=84.5 CFS

DEVELOPED FLOWS DISCHARGED
 OS=33.9 CFS
 Q100=84.5 CFS

TEMPORARY WATER QUALITY/DETENTION POND

HISTORIC FLOWS
 OS=18.1 CFS
 Q100=45.0 CFS

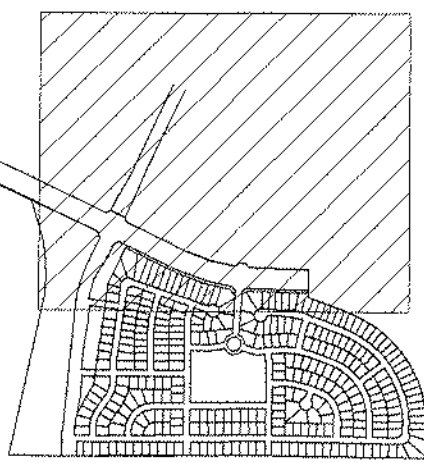
DEVELOPED FLOWS (THIS REPORT ONLY)
 OS=17.9 CFS
 Q100=42.1 CFS



MOUNTAIN VISTA RANCH FILING NO. 1 & 2
DRAINAGE MAP

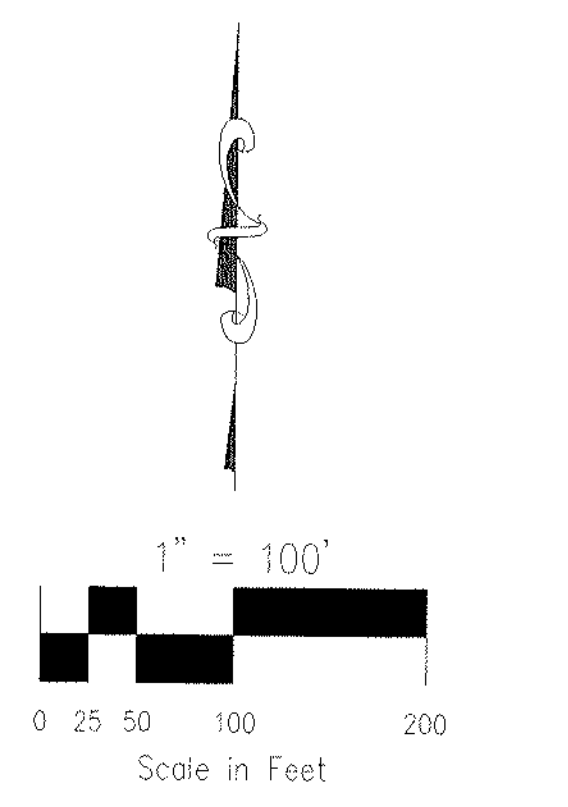
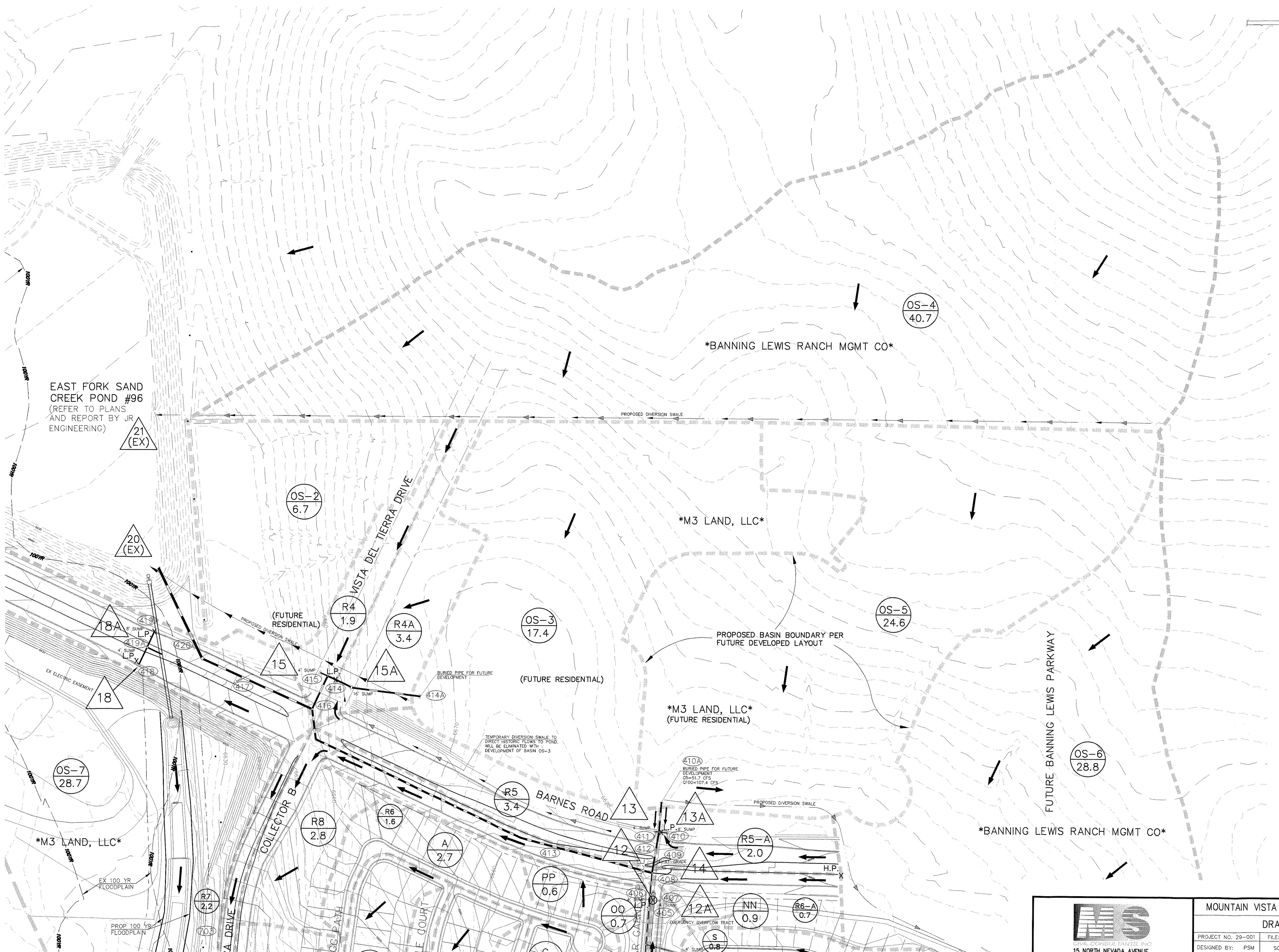
PROJECT NO. 29-001 FILE: *.dwg\dev\plan\29001 - Drainage Plan
 DESIGNED BY: PSM SCALE DATE: 3/17/08
 DRAWN BY: PSM HORIZ: 1"=100' SHEET 2 OF 3
 CHECKED BY: VAS VERT: N/A D2

15 NORTH NEVADA AVENUE
 COLORADO SPRINGS, CO 80903
 (719) 955-5485, FAX (719) 444-8427



KEY MAP

PIPE	SIZE	OS	LENGTH
602	30" RCP	13.4/27.1	
603	36" RCP	22.8/44.8	
500	42" RCP	25.3/52.5	
501	18" RCP	3.8/6.3	
502	24" RCP	5.1/8.6	
503	42" RCP	33.9/76.8	
504	42" RCP	36.6/74.2	
401	18" RCP	1.9/3.9	
402	18" RCP	4.3/9.2	
403	24" RCP	5.7/12.1	
404	18" RCP	3.3/7.0	
405	24" RCP	9.5/19.8	
406	18" RCP	1.5/3.1	
407	18" RCP	1.5/3.1	
408	36" RCP	12.4/25.9	
409	18" RCP	1.2/2.1	
410A	42" RCP	38.8/80.5	
410	30" RCP	12.3/23.8	
411	24" RCP	4.1/9.8	
412	42" RCP	51.6/110.0	
413	54" RCP	60.0/127.2	
414A	36" RCP	28.9/60.1	
414	48" RCP	48.1/102.3	
415	18" RCP	3.9/8.1	
416	48" RCP	50.9/108.1	
417	60" RCP	110.0/233.6	
418	30" RCP	10.0/20.5	
419	36" RCP	13.5/26.8	
419A	36" RCP	23.4/47.1	
420	60" RCP	109.5/232.4	
301	18" RCP	3.2/4.8	
302	18" RCP	3.5/6.1	
303	24" RCP	6.7/10.9	
305	18" RCP	3.9/7.8	
306	24" RCP	10.7/18.7	
307	36" RCP	13.5/31.8	
308	42" RCP	23.2/48.8	
309	54" RCP	37.9/79.3	
201	36" RCP	16.2/35.9	
202	18" RCP	0.7/1.4	
203	36" RCP	16.8/37.2	
204	18" RCP	4.6/7.8	
205	36" RCP	21.1/44.5	
206	36" RCP	15.6/34.3	
207	30" RCP	11.3/24.0	
208	36" RCP	44.8/95.9	
101	18" RCP	4.4/7.2	
102	24" RCP	5.9/13.2	
103	24" RCP	10.2/20.1	
104	36" RCP	18.9/42.0	
105	18" RCP	0.8/1.7	
106	36" RCP	29.4/62.9	
107	30" RCP	8.7/18.7	
108	42" RCP	38.1/81.5	
EX-1	48" RCP	43.9/88.9	



LEGEND

	BASIN LABEL 2.00
	PIPE REFERENCE LABEL 200
	SURFACE DESIGN POINT 2
	FLOW DIRECTION
	BASIN BOUNDARY
	EXISTING CONTOUR
	PROPOSED CONTOUR
	STORM SEWER PIPE
	CROSSSPAN
	INLET
	MANHOLE
	FLARED END SECTION
	PHASE LINE

15 NORTH NEVADA AVENUE
COLORADO SPRINGS, CO 80903
(719) 955-5485, FAX (719) 471-4812

MOUNTAIN VISTA RANCH FILING NO. 1 & 2

DRAINAGE MAP

PROJECT NO. 29-001 FILE: \\dwg\dev\plan\29001 - Drainage Plan

DESIGNED BY: PSM SCALE: DATE: 3/17/08

DRAWN BY: PSM HORIZ: 1"=100'

CHECKED BY: VAS VERT: N/A

SHEET 3 OF 3

D3