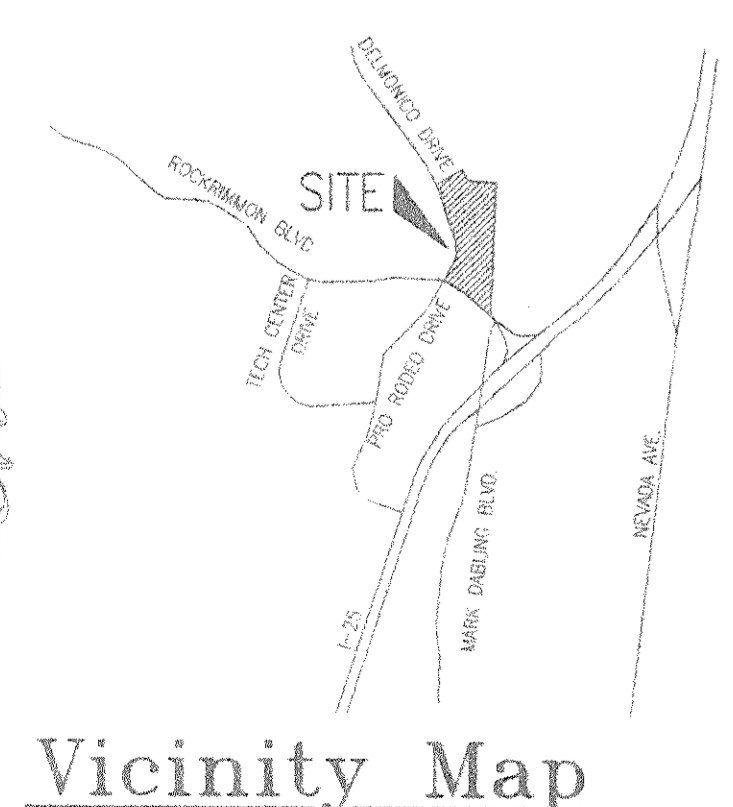
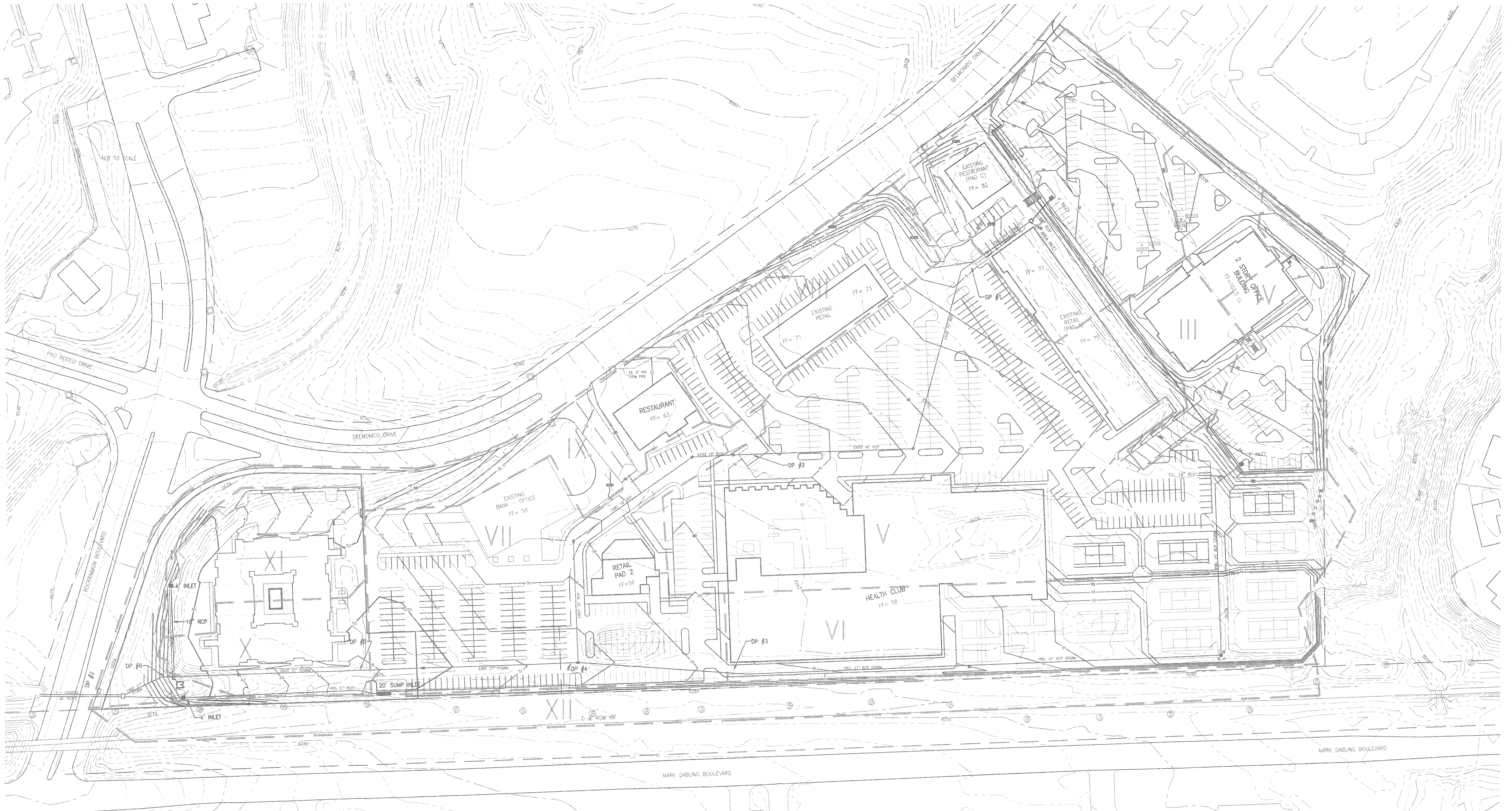


NORTH POINTE

DEVELOPED DRAINAGE PLAN



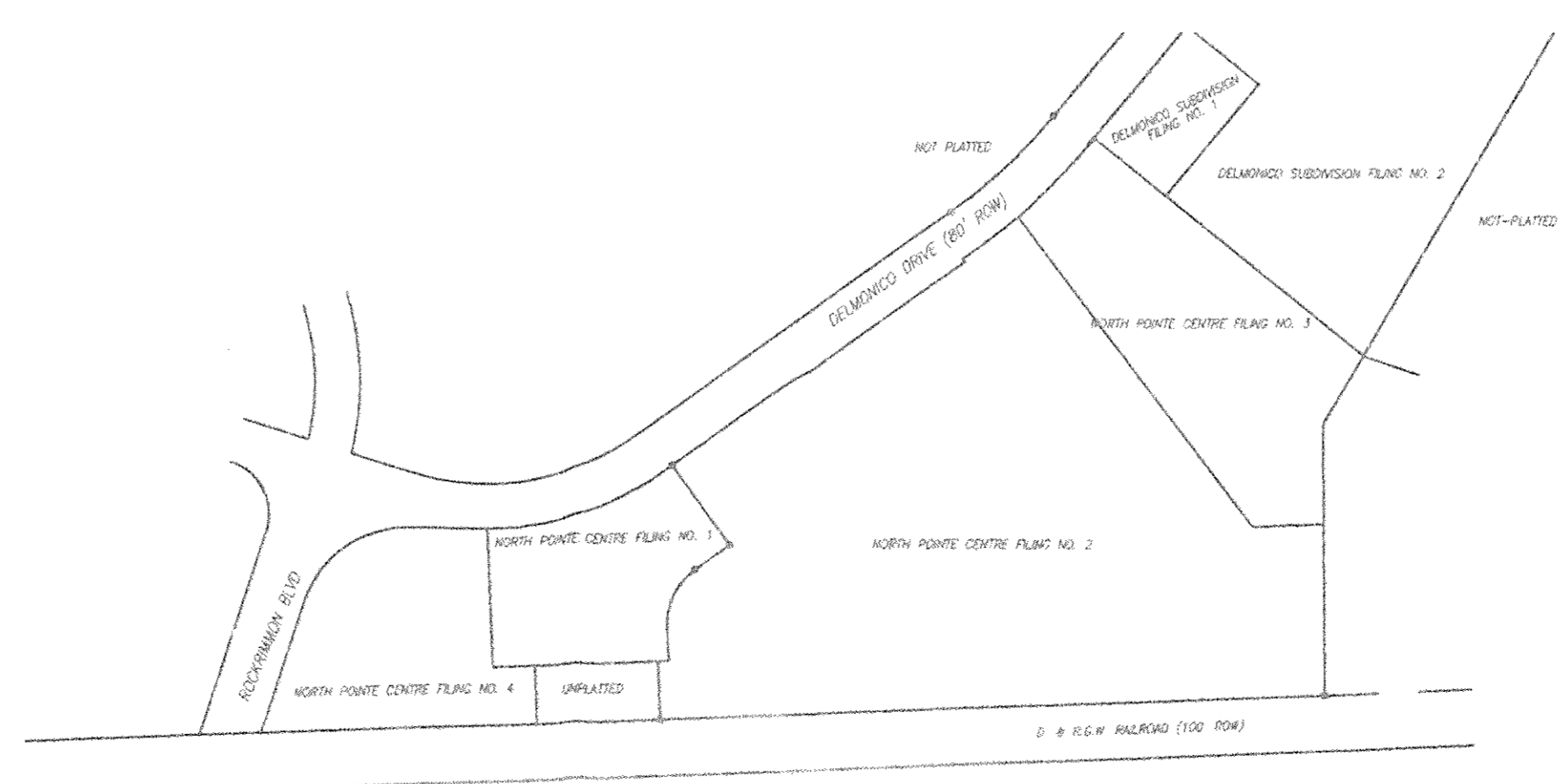
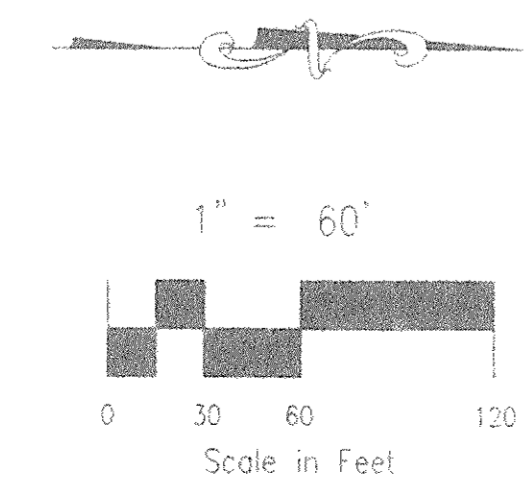
Vicinity Map

SUMMARY TABLE

BASIN	AREA (Ac.)	05' (cfs)	0'100' (cfs)
I	1.75	6.9	12.9
II	0.90	2.2	4.2
III	0.71	2.5	4.8
IV	1.87	6.2	11.8
V	8.07	27.1	50.1
VI	2.92	9.8	17.8
VII	3.77	12.1	22.0
VIII	1.56	6.3	11.8
IX	2.26	2.0	4.8
X	1.10	4.2	7.9
XI	1.12	4.3	8.0
XII	2.45	2.0	4.9


SUMMARY TABLE

BASIN	SUB-BASINS	AREA (Ac.)	05' (cfs)	0'100' (cfs)
DP #1	I,II	2.65	7.2	13.4
DP #2	III,IV,V	11.43	36.6	68.6
DP #3	VI,VI	4.79	15.1	27.8
DP #4	I - VII	16.22	44.8	83.7
DP #5	I - VII	19.99	54.4	98.0
DP #6	I-VI, X,XI	22.21	58.6	105.1



- LEGEND**
- - - - - EXISTING 2' CONTOUR
 - - - - - EXISTING 10' CONTOUR
 - - - - - PROPOSED 2' CONTOUR
 - - - - - PROPOSED 10' CONTOUR
 - DIRECTION OF FLOW
 - - - - - PROPOSED SILT FENCE
 - PROPOSED HYDRANTS

EXHIBIT 2
FILE: 97050R01.DWG 7/15/98



ENGINEERING - SURVEYING
3000 STEEL DR. SUITE #100
COLUMBIA, MISSOURI 65207
(314) 476-2575 • FAX (314) 476-4223

**NORTH POINTE
DEVELOPED DRAINAGE PLAN**

TITLE	SCALE	DATE	DRAWN BY	CHECKED BY	JOB NO.
	1"=60'	7/15/98	KC & FRC	KDR	97-074