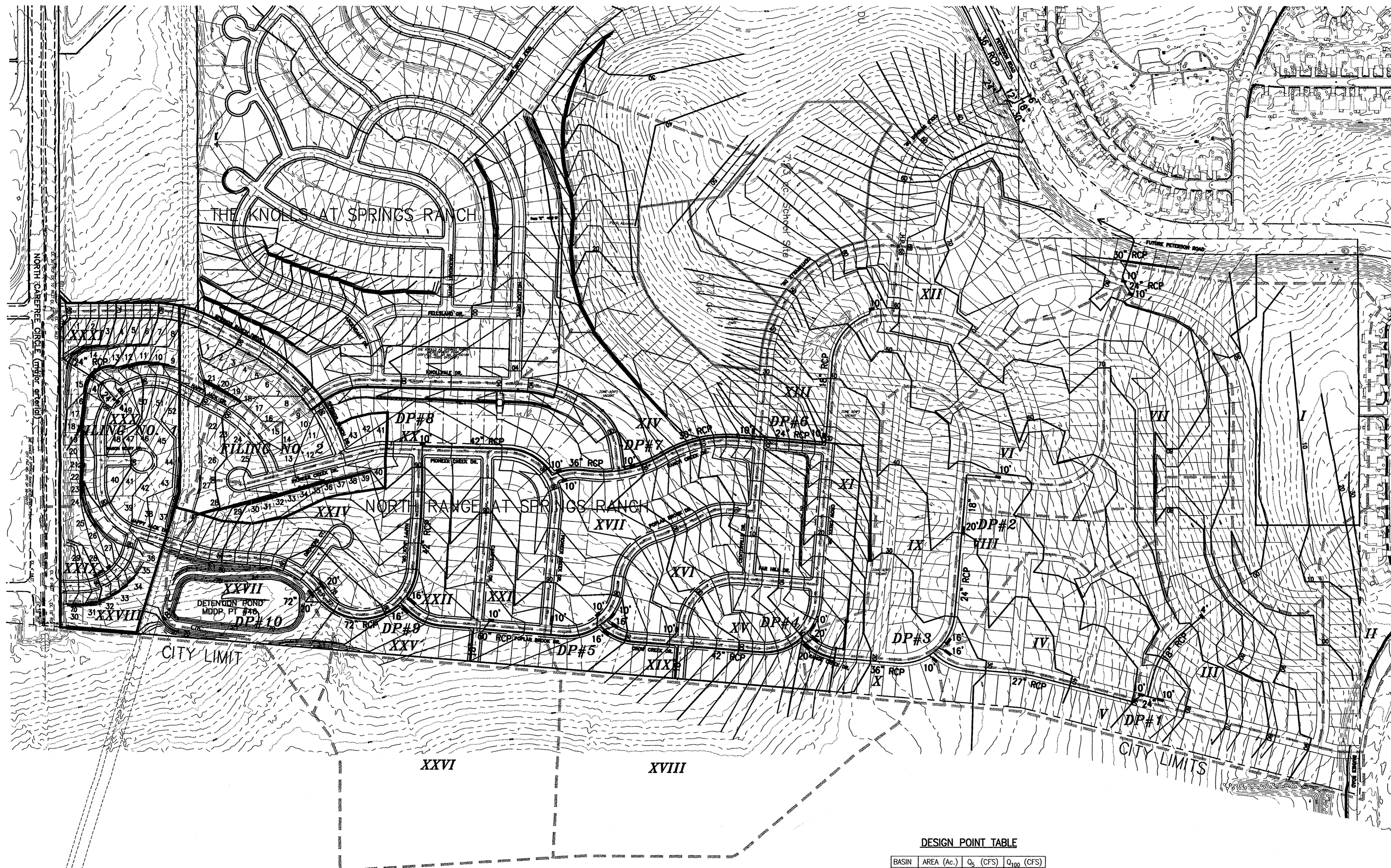
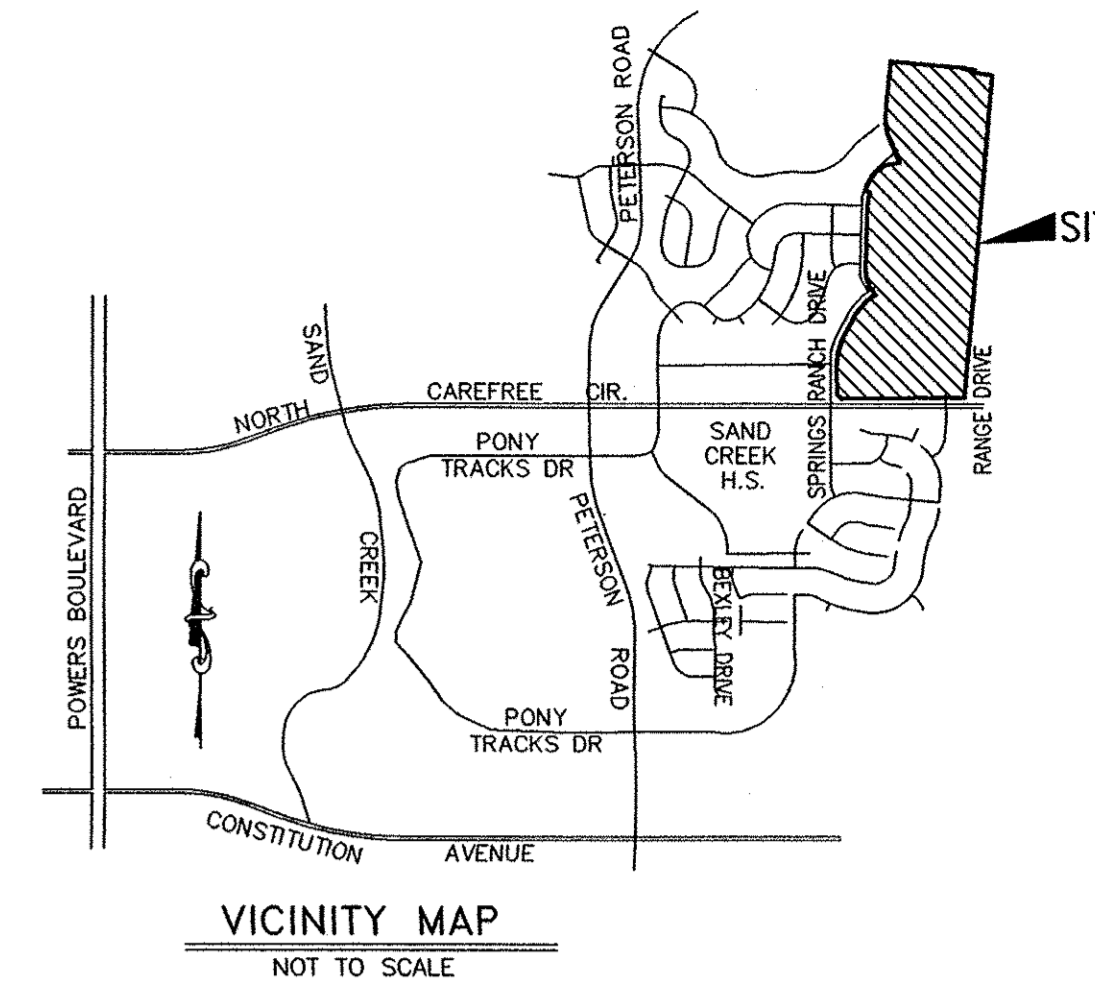


NORTH RANGE AT SPRINGS RANCH

DEVELOPED DRAINAGE PLAN



DEVELOPED DRAINAGE BASIN TABLE

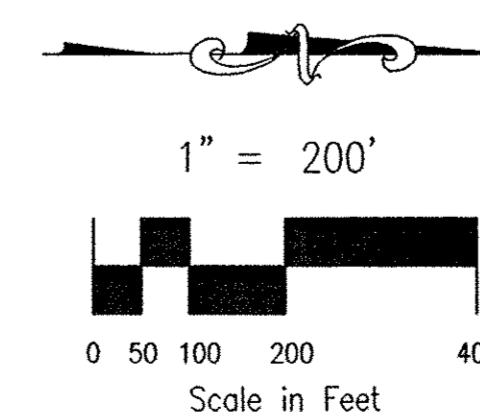
BASIN	AREA (Ac.)	Q _s (CFS)	Q ₁₀₀ (CFS)
I	16.3	27.4	55.9
II	7.4	15.5	31.6
III	10.7	22.5	44.9
IV	7.6	16.0	31.9
V	6.3	12.8	25.6
VI	7.5	16.2	32.5
VII	9.1	16.9	34.4
VIII	4.6	9.7	19.3
IX	8.4	15.6	31.7
X	2.1	4.8	9.5
XI	8.0	16.3	32.5
XII	7.8	16.4	32.7
XIII	5.4	11.6	23.0
XIV	26.3	47.3	95.7
XV	2.7	6.1	12.5
XVI	7.4	15.5	31.1
XVII	7.2	14.3	28.7
XVIII	16.6	11.6	24.5
XIX	3.9	8.4	16.6
XX	10.1	21.2	41.7
XXI	4.0	8.6	17.1
XXII	4.0	9.6	19.3
XXIII			
XXIV	9.2	22.1	44.4
XXV	4.1	9.1	18.1
XXVI	16.0	11.2	27.4
XXVII	4.6	4.8	11.0
XXVIII	2.3	6.1	12.2
XXIX	3.3	8.9	18.0
XXX	6.5	14.0	28.2
XXXI	7.5	14.8	30.4

LEGEND


- 6100 EXISTING CONTOURS
- DEVELOPED BASINS
- PROPOSED 2' CONTOURS
- DIRECTION OF FLOW
- PROPOSED INLET & PIPE
- DRAINAGE BASIN
- DESIGN POINT

DESIGN POINT TABLE

DESIGN POINT	AREA (Ac.)	Q _s (CFS)	Q ₁₀₀ (CFS)
DP#1	18.1	34.7	70.9
DP#2	16.6	30.9	62.7
DP#3	53.2	92.6	186.2
DP#4	63.7	107.0	218.5
DP#5	101.5	170.5	341.0
DP#6	13.2	25.3	51.7
DP#7	39.5	71.1	143.8
DP#8	45.2	78.6	161.4
DP#9	170.7	276.5	561.6
DP#10	187.2	303.3	602.8



FILE: 99044DDP.GEC.DWG 1/11/01



ROCKWELL MINCHOW
CONSULTANTS, INC.

ENGINEERING - SURVEYING
1873 AUSTIN BLUFFS PARKWAY
COLORADO SPRINGS, CO 80918
(719) 475-2525 • FAX (719) 475-9223

TITLE: NORTH RANGE AT SPRINGS RANCH
DEVELOPED DRAINAGE PLAN

SCALE: 1"=200' **DRAWN BY:** TDM **99-044**

DATE: 1/11/01 **CHECKED BY:** KDR **JOB NO.**