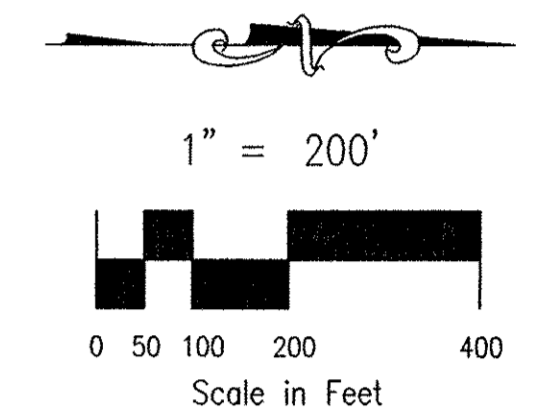
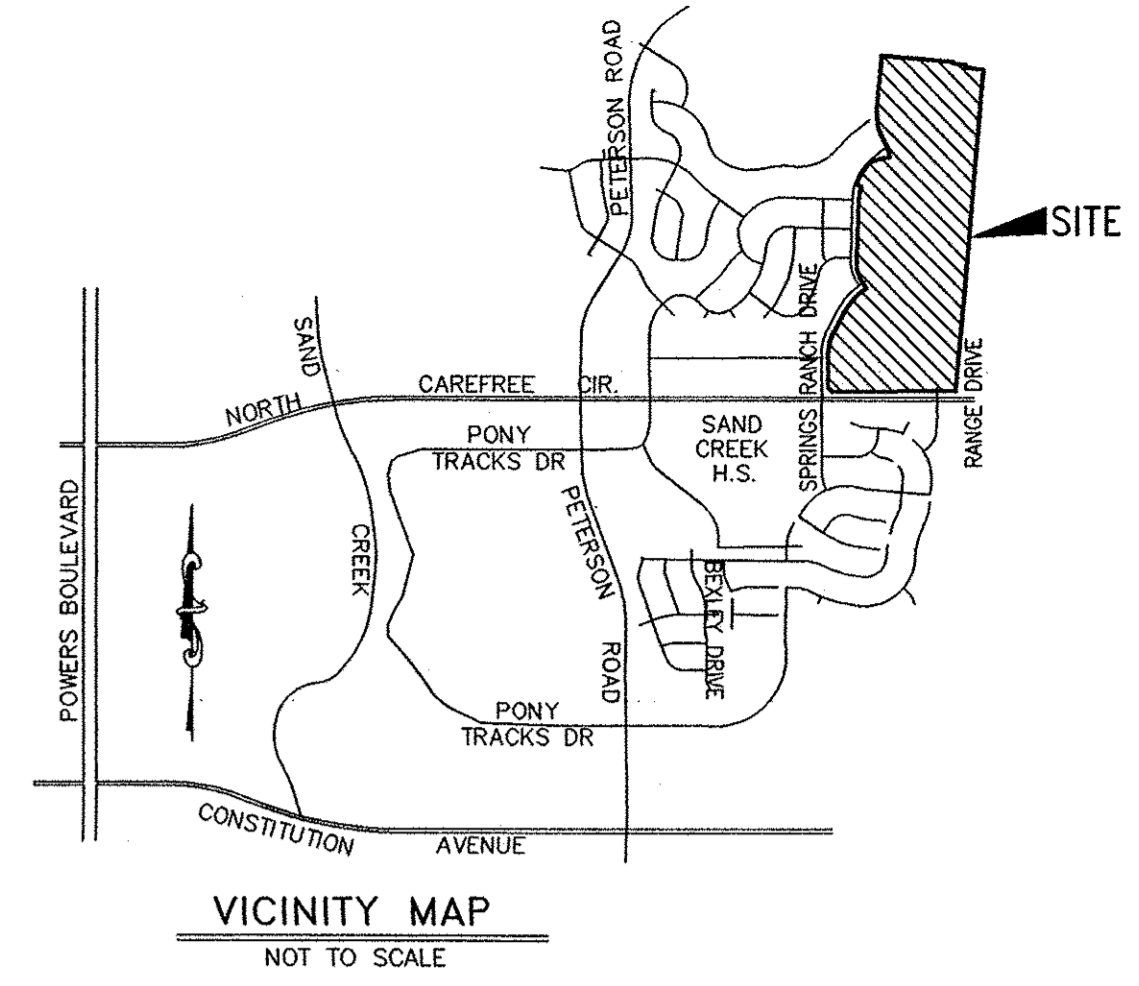
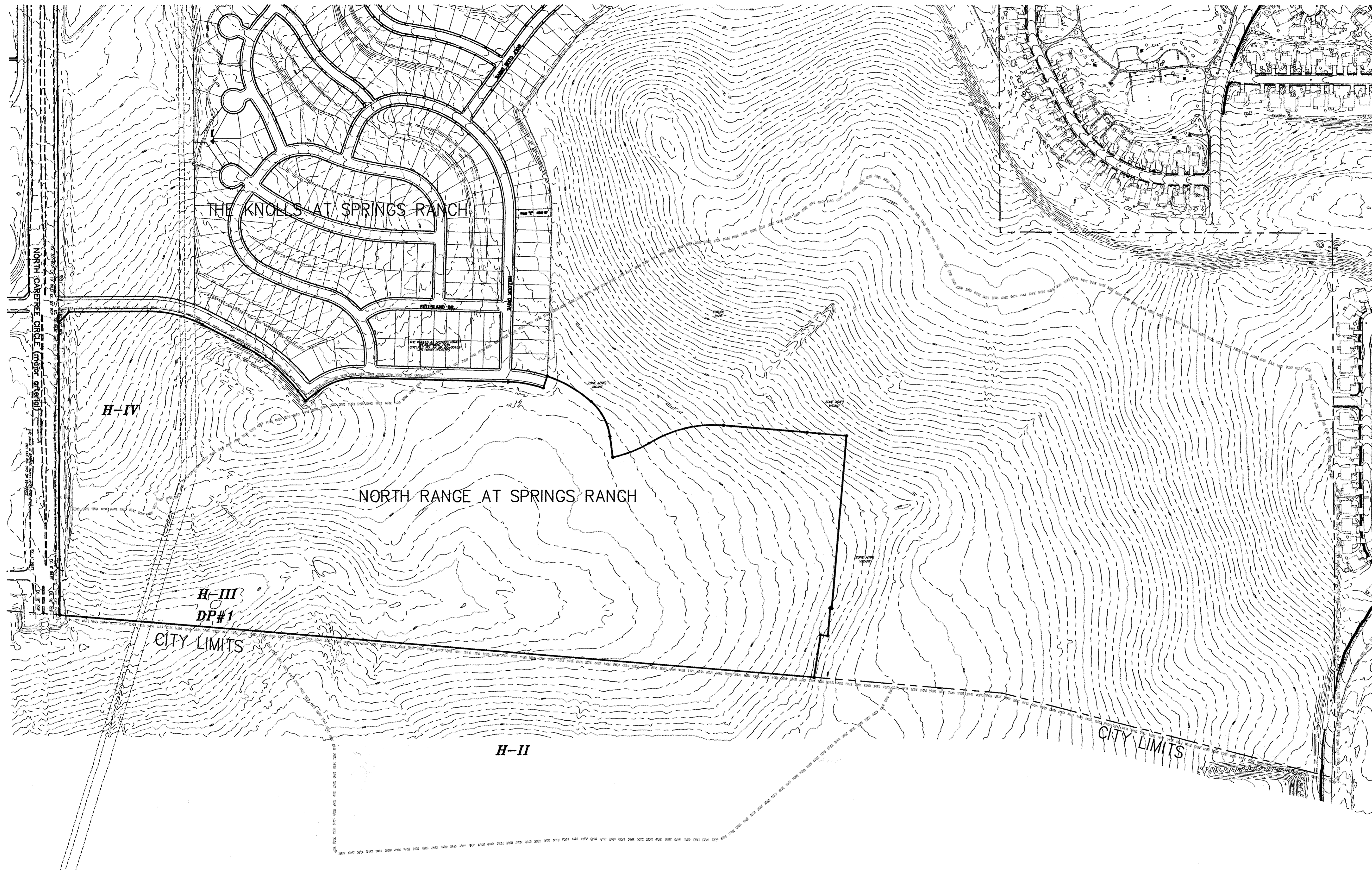


# NORTH RANGE AT SPRINGS RANCH

## HISTORIC DRAINAGE PLAN



HISTORIC DRAINAGE BASIN TABLE

BASIN	AREA (Ac.)	Q <sub>s</sub> (CFS)	Q <sub>100</sub> (CFS)
H-I	4.3	9.8	20.2
H-II	33.4	23.4	56.1
H-III	162.3	73.0	181.8
H-IV	14.5	9.8	23.3
DP#1	200.0	90.0	224.0

- LEGEND**
- 6100 EXISTING CONTOURS
  - HISTORIC BASINS
  - DIRECTION OF FLOW
  - H-I** DRAINAGE BASIN
  - DP#1** DESIGN POINT

FILE: 99044DDPPEC.DWG 11/3/00

ENGINEERING • SURVEYING  
1673 AUSTIN BLUFFS PARKWAY  
COLORADO SPRINGS, CO 80918  
(719) 475-2575 • FAX (719) 475-9223

**ROCKWELL MINCHOW**  
CONSULTANTS, INC.

**NORTH RANGE AT SPRINGS RANCH  
HISTORIC DRAINAGE PLAN**

TITLE :	DRAWN BY : TDM	<b>99-044</b>
SCALE : 1"=200'	CHECKED BY : KDR	JOB NO.
DATE : 11/3/00		