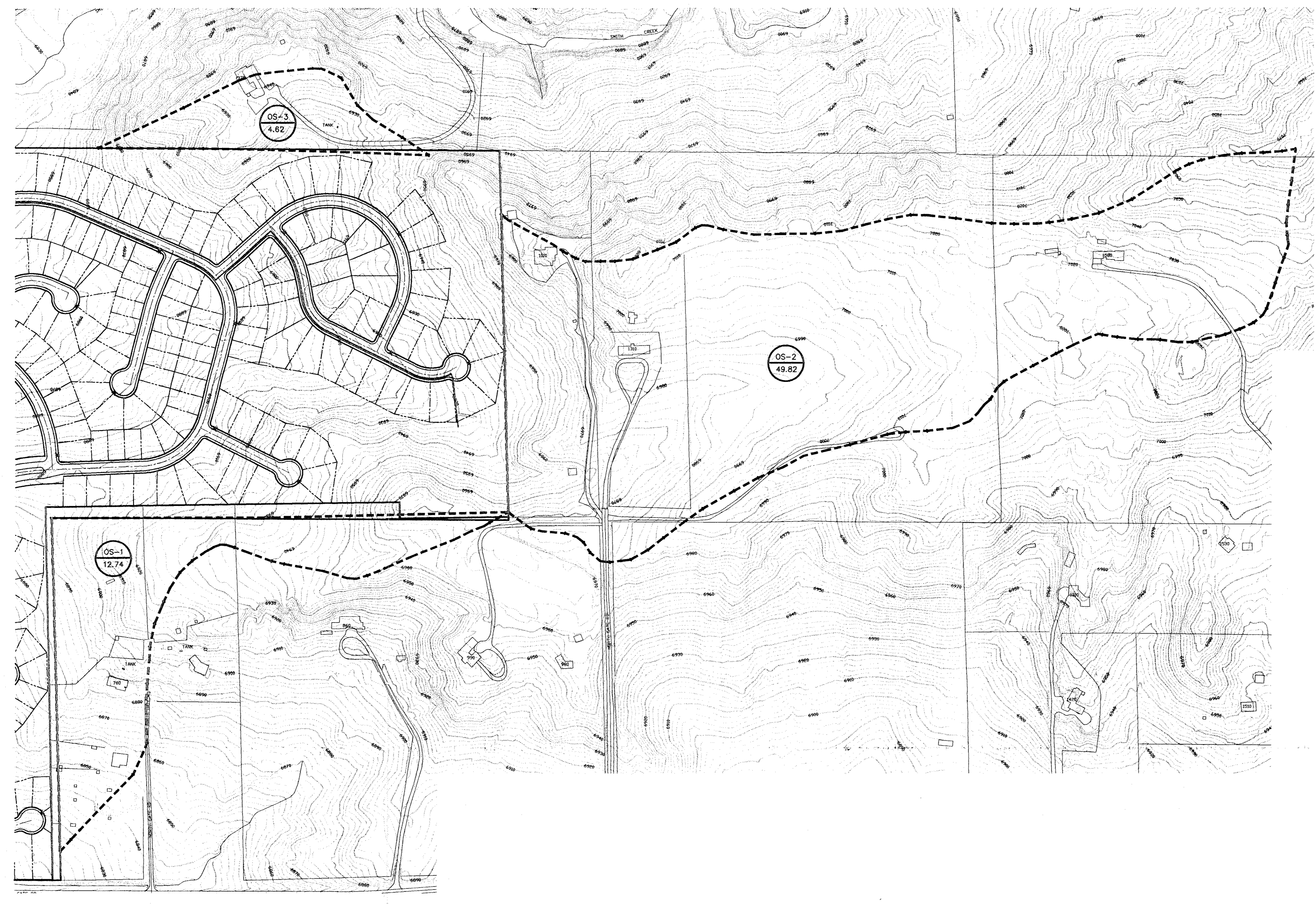
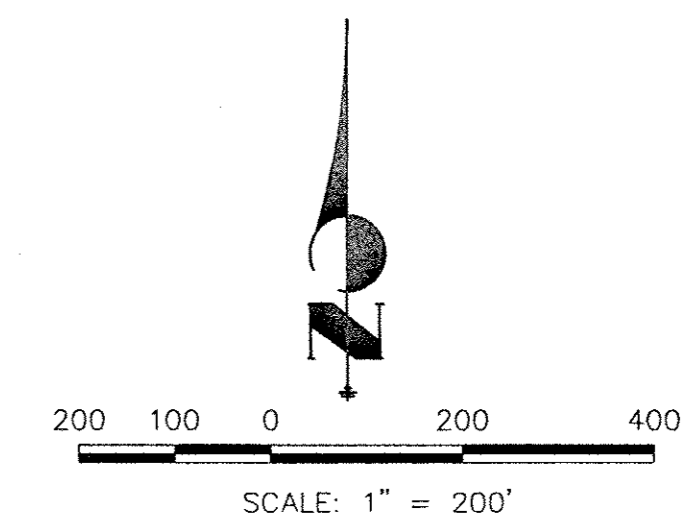
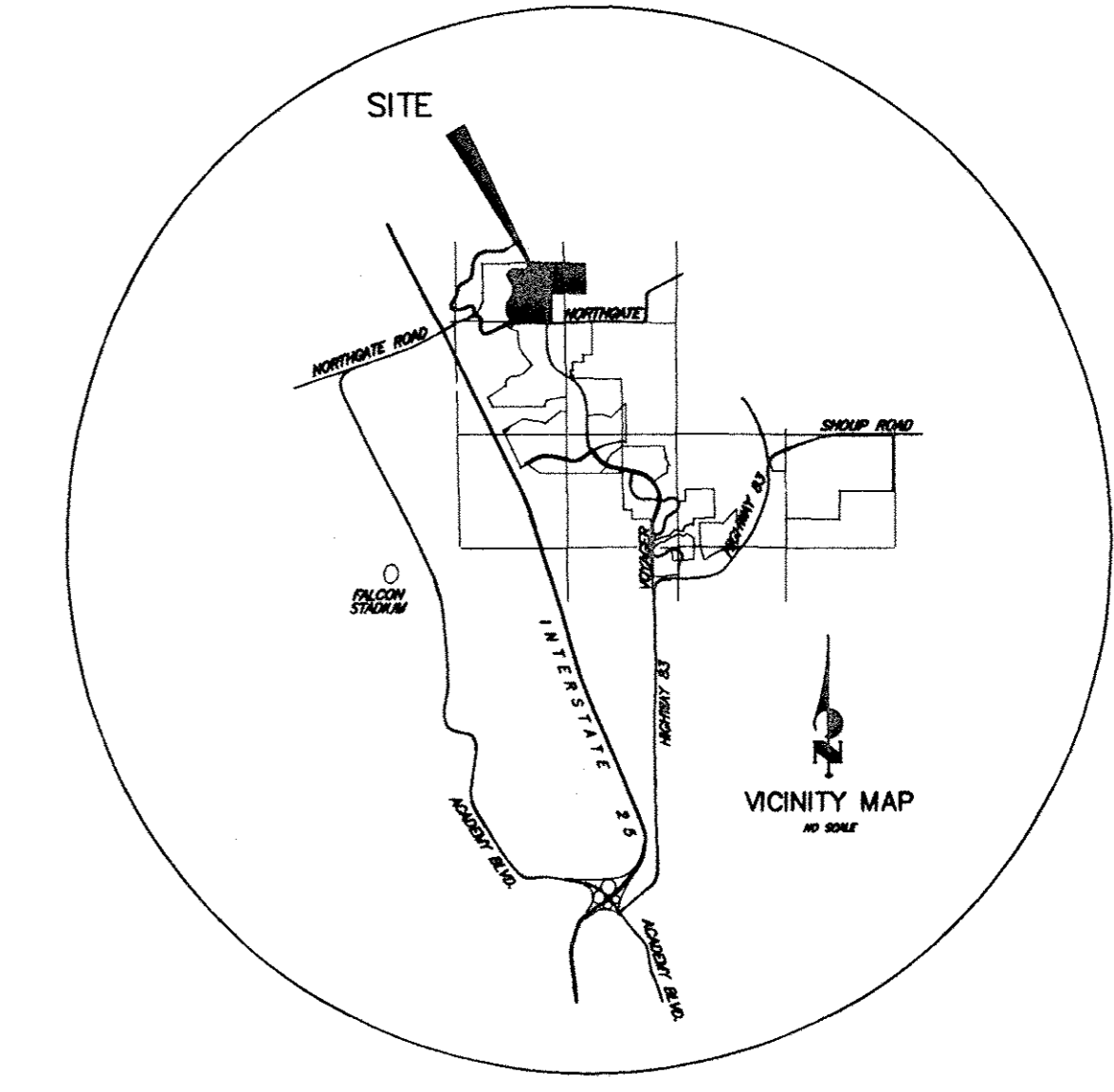


# NORTHGATE HIGHLANDS

## CITY OF COLORADO SPRINGS, COUNTY OF EL PASO, STATE OF COLORADO

# MASTER DRAINAGE DEVELOPMENT PLAN

### OFF-SITE BASINS DECEMBER 1998



#### LEGEND

DESCRIPTION	SYMBOL
EXISTING GROUND CONTOUR	6910
PROPOSED FINISHED CONTOUR	6910
SUBDIVISION BOUNDARY	—
LOT LINE	—
MINOR BASIN BOUNDARY	- - -
MAJOR BASIN BOUNDARY	- - - -
DIRECTION OF DRAINAGE	→
DIRECTION OF EXISTING DRAINAGE	→
BASIN IDENTIFIER	A
AREA IN ACRES	10.1
DESIGN POINT	DP-X
PROPOSED CROSSSPAN	—
EXISTING STORM SEWER	—
EXISTING PAVEMENT	—
PROPOSED STORM SEWER	—

BASIN	AREA (ACRES)	T <sub>c</sub>	C <sub>s</sub>	C <sub>100</sub>	I <sub>s</sub>	I <sub>100</sub>	Q <sub>s</sub> (CFS)	Q <sub>100</sub> (CFS)
OS-1	12.74	11.3	.25	.35	4.0	6.8	12.7	30.3
OS-2	49.82	17.1	.25	.35	3.2	5.6	39.9	97.7
OS-3	4.62	7.6	.25	.35	4.5	7.8	5.2	12.6

#### BASIN PARAMETERS

BASIN: OS-1  
300' OVERLAND @ 15%  
T<sub>c</sub> = 11.3 MIN.

BASIN: OS-2  
300' OVERLAND @ 15%  
1400' CHANNEL FLOW @ 4fps  
T<sub>c</sub> = 17.1 MIN.

BASIN: OS-3  
150' OVERLAND @ 17%  
T<sub>c</sub> = 7.6 MIN.

UNTIL SUCH TIME AS THESE  
PLANS ARE APPROVED BY  
THE APPROPRIATE REVIEWING  
AGENCIES, JR ENGINEERING, LTD.  
APPROVES THEIR USE ONLY FOR  
THE PROJECT AND AS AUTHORIZED BY  
WRITTEN AUTHORIZATION.

48 HOURS BEFORE YOU DIG,  
CALL UTILITY LOCATORS  
**1-800-922-1987**  
CITY OF COLORADO SPRINGS DEPT. OF UTILITIES  
GAS, ELECTRIC, WATER AND WASTEWATER

**JR Engineering, Ltd.**  
4935 North 30th Street  
Colorado Springs, Colorado 80919  
(719) 595-5383 • FAX (719) 528-8613

SCALE	DATE	DES. BY	CHK. BY	DWN. BY	REVISION	BY	DATE
					NO.	IND.	NO.
1" = 200'	12/21/98	ABE					
NORTHGATE HIGHLANDS MASTER DRAINAGE DEVELOPMENT PLAN OFF-SITE BASINS							
SHEET 3 OF 3							
JOB NO. 9048.00							

FILENAME: 904800DR-3 DATE: 12/22/98 XREFS: 904800HZ, 904800EC