

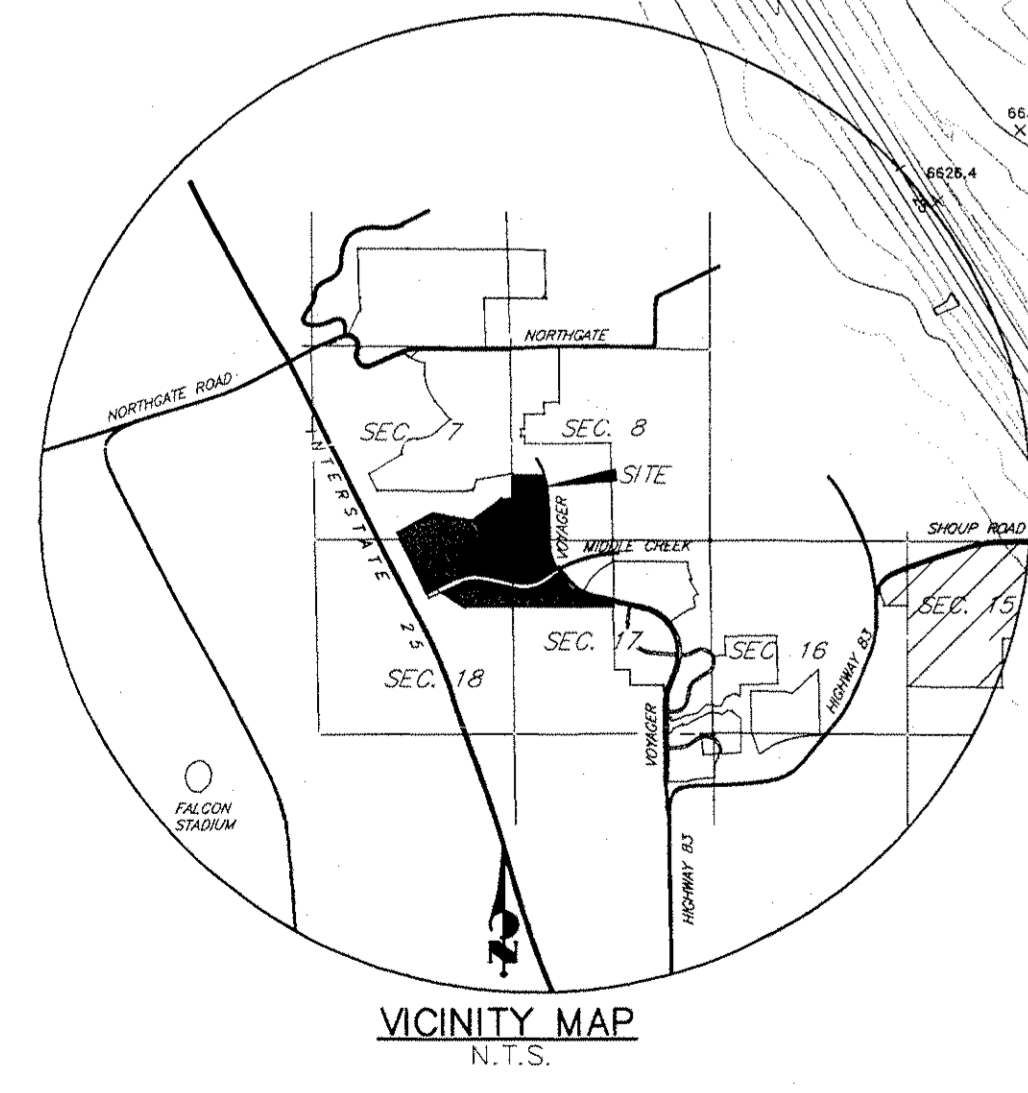
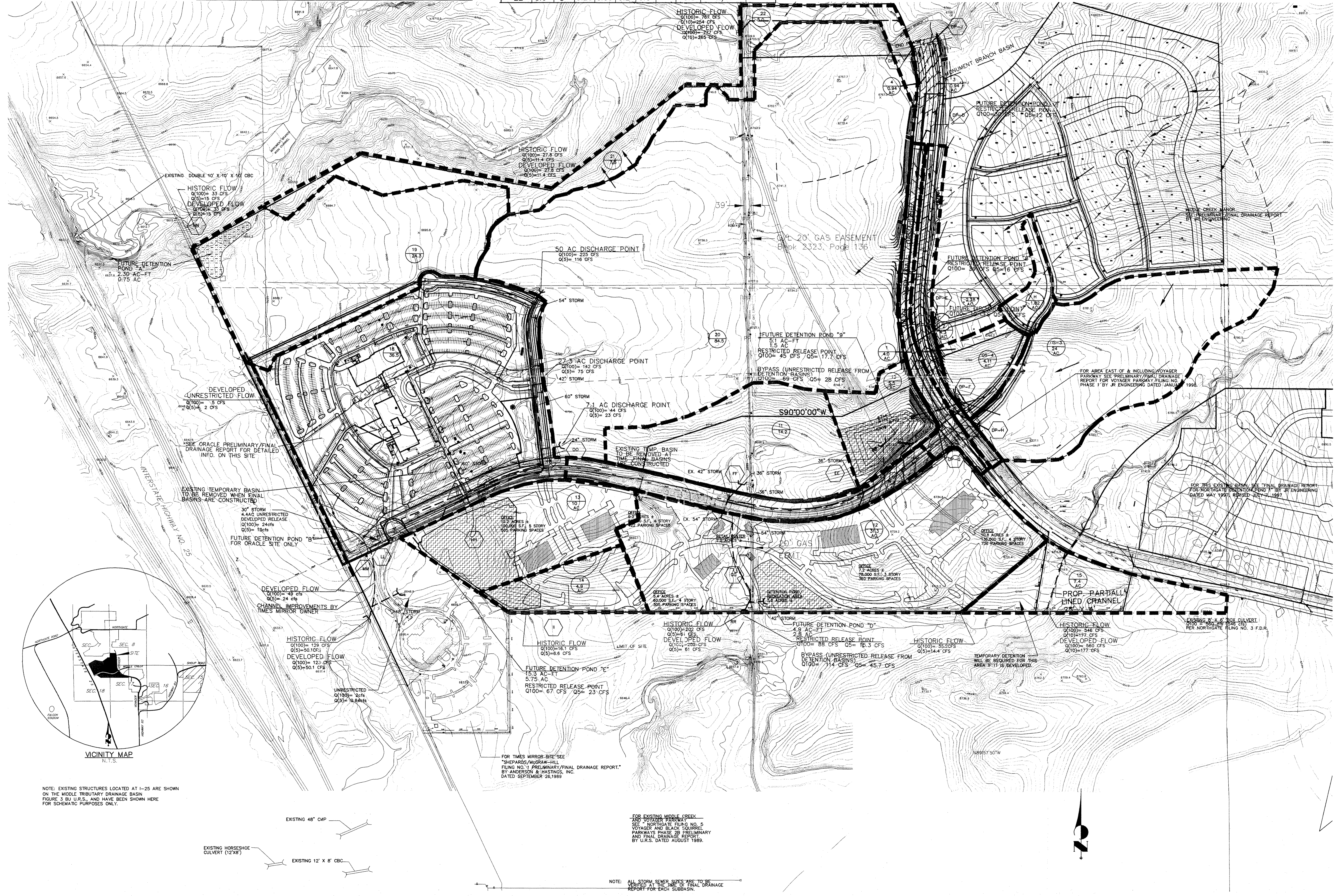
BASIN SUMMARY										
BASIN	AREA (ACRES)	Tc (MIN)	Cs	C100	I _s	I ₁₀₀	Q _s (CFS)	Q ₁₀₀ (CFS)	Q ALLOWABLE BASIN RELEASE FROM URS STUDY (CFS)	DESIGN POINT
7	PROF. BASIN	REST. RELEASE	12	30	35					(D)
8	PROF. BASIN	REST. RELEASE	16	39	27					(E)
H.OS-4 OS-3	29.9	14	0.67	0.74	3.5	6.1	70.1	135.0	161cfs	(F)
1	4.0	16	0.67	0.74	3.3	5.7	8.8	16.9	N/A	(G)
2	4.3	16	0.64	0.71	3.3	5.7	9.1	17.4	N/A	(H)
3	0.94	15	0.64	0.71	3.4	5.9	2.05	3.94	N/A	(J)
4	0.94	15	0.64	0.71	3.4	5.9	2.05	3.94	N/A	(K)
10	5.5	5	0.90	0.95	5.2	9.0	25.7	47.0	98cfs	(E)
11	14.2	18	0.80	0.88	3.1	5.4	35.2	67.5	N/A	(F)

BASIN	AREA (ACRES)	Tc (MIN)	Cs	C100	I _s	I ₁₀₀	Q _s (CFS)	Q ₁₀₀ (CFS)	Q ALLOWABLE BASIN RELEASE FROM URS STUDY (CFS)	DESIGN POINT
12	31.3	15	0.80	0.88	3.4	5.9	85.1	162.5	202cfs	(G)
13	10.0	12	0.80	0.88	3.8	6.6	30.4	58.1	N/A	(H)
14	4.9	4	0.80	0.88	5.4	9.4	21.2	40.5	N/A	(I)
15	5.8	4	0.25	0.35	5.4	9.4	7.8	19.1	N/A	
16	6.6	16	0.90	0.95	3.3	5.7	19.6	35.7	N/A	
17	4.4	11	0.74	0.80	6.8	4.0	24.0	13.0	N/A	(L)
18	40.3	SEE ORACLE F.D.R.							123cfs	(M)
19	24.3	20	0.68	0.74	3.0	5.3	49.6	95.3	94cfs	(N)
20	84.5	25	0.80	0.88	2.6	4.5	176	335	N/A	(O)
21	7.5	2	0.26	0.36	6.0	9.8	11.7	26.5	N/A	
22	5.0	5	0.25	0.35	5.2	9.0	6.5	15.8	N/A	

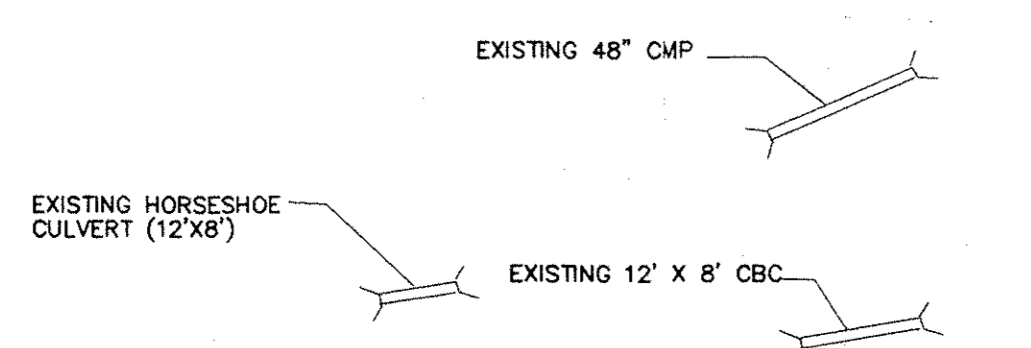
BASIN	AREA (ACRES)	Tc (MIN)	Cs	C100	I _s	I ₁₀₀	Q _s (CFS)	Q ₁₀₀ (CFS)	Q ALLOWABLE BASIN RELEASE FROM URS STUDY (CFS)	DESIGN POINT
N	2.28	7	0.65	0.70	4.8	8.2	7.1	13.1		

LEGEND

	EXISTING GROUND CONTOUR		PROPOSED FINISHED CONTOUR
	BASIN IDENTIFIER		AREA IN ACRES
	DESIGN POINT		PROPOSED CROSSSPAN
	MINOR BASIN BOUNDARY		EXISTING STORM SEWER
	SUBDIVISION BOUNDARY		PROPOSED STORM SEWER
	LOT LINE		EXISTING PAVEMENT
	MAJOR BASIN BOUNDARY		
	DIRECTION OF DRAINAGE		
	DIRECTION OF EXISTING DRAINAGE		



NOTE: EXISTING STRUCTURES LOCATED AT I-25 ARE SHOWN ON THE MIDDLE TRIBUTARY DRAINAGE BASIN FIGURE 3 BU U.R.S. AND HAVE BEEN SHOWN HERE FOR SCHEMATIC PURPOSES ONLY.



FOR EXISTING MIDDLE CREEK AND VOYAGER PARKWAY AND NORTHGATE PLUG NO. 5 VOYAGER AND BLACK SQUIRREL PARKWAYS PHASE 2B PRELIMINARY AND FINAL DRAINAGE REPORT BY U.R.S. DATED AUGUST 1989.

NOTE: ALL STORM SEWER SIZES ARE TO BE SHOWN AT THE FINAL DRAINAGE REPORT FOR EACH SUBBASIN.

48 HOURS BEFORE YOU DIG, CALL UTILITY LOCATORS
1-800-922-1987
 CITY OF COLORADO SPRINGS DEPT. OF UTILITIES
 GAS, ELECTRIC, WATER AND WASTEWATER

JR Engineering, Ltd.
 4835 North 40th Street
 Colorado Springs, Colorado 80919
 (719) 593-2885 • FAX (719) 528-8613

NO.	REVISION	DATE	BY	DATE	BY
1	COMBINED BASIN "E"	2-1-99	LDR	2-1-99	LDR

SCALE: 1"=200'
 DATE: 8/7/98
 DES. BY: LDR
 CHK. BY: LDR
 DWN. BY: LDR

NORTHGATE SOFTWARE CAMPUS
 DEVELOPED CONDITION DRAINAGE MAP

SHEET 1 OF 1
 JOB NO. 889615