

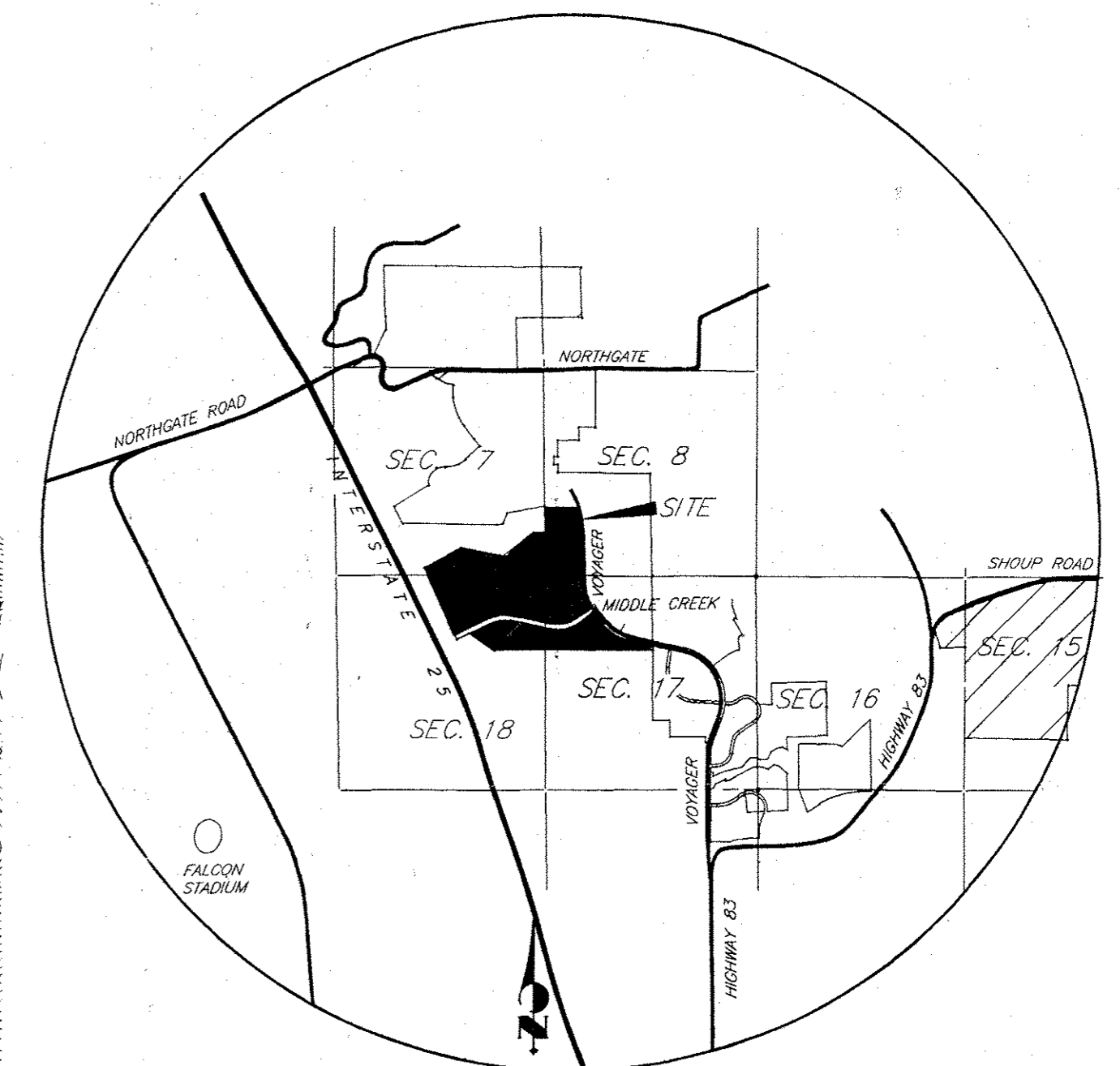
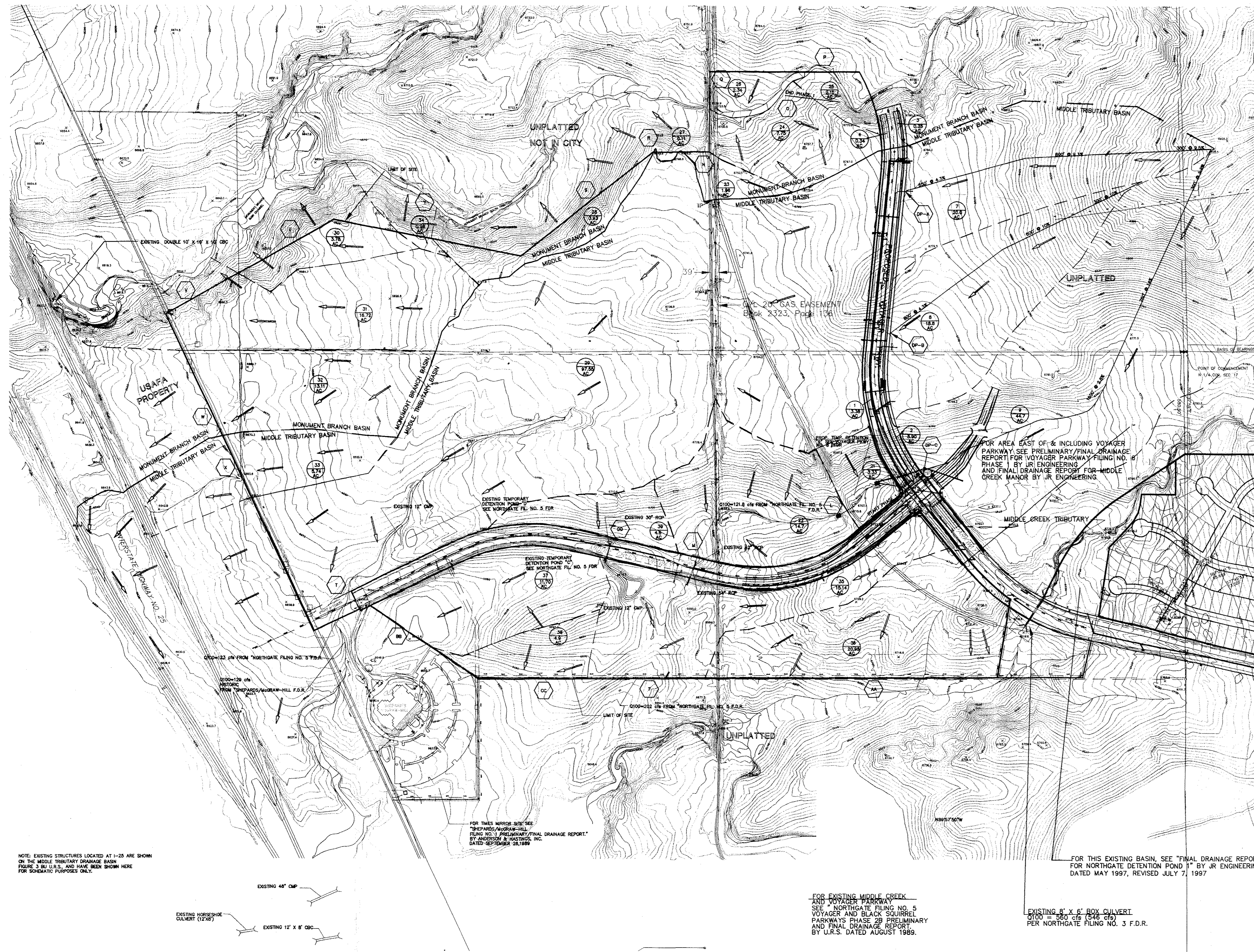
# NORTHGATE SOFTWARE CAMPUS

## COLORADO SPRINGS, CO.

# MASTER DEVELOPMENT DRAINAGE PLAN

### EXISTING CONDITIONS DRAINAGE MAP

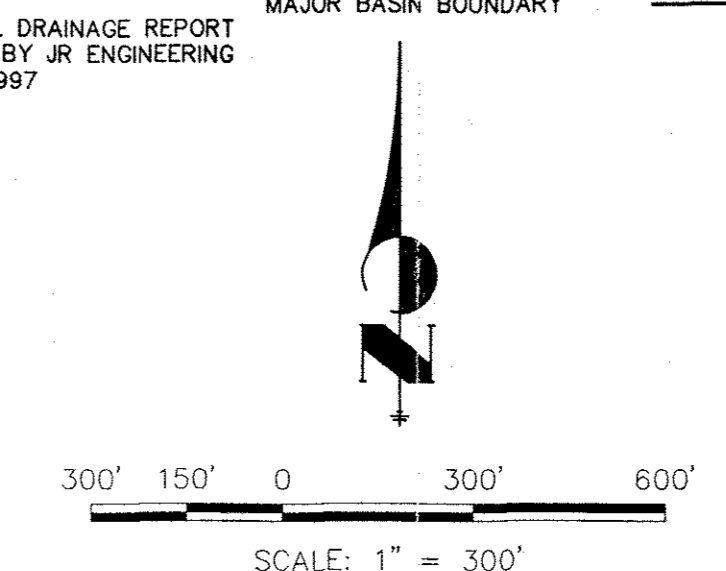
### FEBRUARY, 1998



BASIN SUMMARY									
BASIN	AREA (ACRES)	T <sub>c</sub>	C <sub>s</sub>	C <sub>100</sub>	I <sub>s</sub>	I <sub>100</sub>	Q <sub>s</sub> (CFS)	Q <sub>100</sub> (CFS)	DP DESIGN POINT
7	20.0	19	.15	.20	3.0	5.3	9.0	21.2	(A)
8	18.8	17	.15	.20	3.2	5.6	9.0	21.0	(B)
9	44.7	22	.15	.20	2.8	4.9	18.8	43.8	(C)
21	3.33	4	.15	.20	5.4	9.4	2.7	6.3	(L)
22	14.7	4	.15	.20	5.4	9.4	11.9	27.6	(M)
23	1.96	5	.15	.20	5.2	9.0	1.5	3.5	(N)
24	7.75	5	.15	.20	5.2	9.0	6.0	9.3	(O)
25	2.15	4	.15	.20	5.4	9.4	1.7	4.0	(P)
26	2.34	5	.15	.20	5.2	9.0	1.8	4.2	(Q)
27	0.11	1	.15	.20	6.0	10.0	0.1	0.2	(R)
28	3.93	2	.15	.20	6.0	9.8	3.5	7.7	(S)
29	97.55	23	.15	.20	2.7	4.7	39.5	91.7	(T)
30	3.78	5	.15	.20	5.2	9.0	2.9	6.8	(U)
31	16.72	11	.15	.20	4.0	6.8	10.0	22.7	(V)
32	13.11	11	.15	.20	4.0	6.8	7.9	17.8	(W)
33	5.74	9	.15	.20	4.3	7.4	3.7	8.5	(X)
34	0.28	3	.15	.20	6.0	9.6	0.3	0.5	(Y)
35	15.14	13	.15	.20	3.7	6.3	8.4	19.10	(Z)
36	20.95	8	.15	.20	4.5	7.8	14.1	32.7	(AA)
37	11.7	10	.15	.20	4.1	7.0	7.2	16.4	(BB)
38	4.9	4	.15	.20	5.4	9.4	4.0	9.2	(CC)
39	4.6	5	.15	.20	5.2	9.0	3.6	8.3	(DD)
1	3.38	16	.15	.20	3.3	5.7	1.67	3.85	
2	3.90	16	.15	.20	3.3	5.7	1.93	4.44	
3	0.35	15	.15	.20	3.4	5.9	0.18	0.41	
4	0.34	15	.15	.20	3.4	5.9	0.17	0.40	

\* NOTE: FLOWS SHOWN IN THE TABLE ONLY REFLECT FLOW FROM SUBBASIN AND NOT FLOWS FROM UPSTREAM AREA.

DESCRIPTION	SYMBOL	DESCRIPTION	SYMBOL
EXISTING GROUND CONTOUR	6910	DIRECTION OF DRAINAGE	→
PROPOSED FINISHED CONTOUR	6910	DIRECTION OF EXISTING DRAINAGE	→
SUBDIVISION BOUNDARY	—	BASIN IDENTIFIER	(A)
STUDY BOUNDARY	—	AREA IN ACRES	(10.1)
MINOR BASIN BOUNDARY	- - -	DESIGN POINT	DP-X
MAJOR BASIN BOUNDARY	—	EXISTING STORM SEWER	—
		EXISTING PAVEMENT	—



NOTE: EXISTING STRUCTURES LOCATED AT 1-25 ARE SHOWN ON THE MIDDLE TRIBUTARY DRAINAGE BASIN FIGURE 3 IN U.S. AND HAVE BEEN SHOWN HERE FOR SCHEMATIC PURPOSES ONLY.

FOR THIS MIRROR SITE SEE SHEPARDSON/ANGRAM-HILL FILING NO. 4 PRELIMINARY/FINAL DRAINAGE REPORT BY ANDERSON & HASTINGS, INC. DATED SEPTEMBER 28, 1989

FOR EXISTING MIDDLE CREEK AND VOYAGER PARKWAY SEE NORTHGATE FILING NO. 5 VOYAGER AND BLACK SQUIRREL PARKWAYS PHASE 2B PRELIMINARY AND FINAL DRAINAGE REPORT BY U.S. DATED AUGUST 1989.

EXISTING 8' X 6' BOX CULVERT 0100 = 550 cfs (546 cfs) PER NORTHGATE FILING NO. 3 F.D.R.

\* NOTE: FOR MIDDLE CREEK PARKWAY, REFER TO MIDDLE CREEK PARKWAY PLANS BY URS FOR EXACT LOCATION AND SIZE OF STORM SEWER. AS ONLY 1/2 OF THE MIDDLE CREEK PARKWAY WAS CONSTRUCTED AT THE TIME OF THE REPORT, MUCH OF THE STORM SEWER HAS NOT YET BEEN INSTALLED.

UNTIL SUCH TIME AS THESE AGENCIES, OR ENGINEERING, ARCHITECTURAL, OR OTHER PROFESSIONAL AGENCIES, REVIEW AND APPROVE THIS PLAN FOR THE PURPOSES DESCRIBED BY WRITTEN AUTHORIZATION.

48 HOURS BEFORE YOU DIG, CALL UTILITY LOCATORS  
1-800-922-1987  
CITY OF COLORADO SPRINGS DEPT. OF UTILITIES GAS, ELECTRIC, WATER AND WASTEWATER

**JR Engineering, Ltd.**  
4835 North 30th Street  
Colorado Springs, Colorado 80919  
(719) 593-2593 • FAX (719) 528-6613

NO.	DATE	REVISION	SCALE	DATE	DES. BY	CHK. BY	DWN. BY
1	3/23/98		1"=300'	1/27/98	LDR	LDR	INV.

NORTHGATE SOFTWARE CAMPUS  
MASTER DEVELOPMENT DRAINAGE PLAN  
EXISTING CONDITIONS DRAINAGE MAP  
EXHIBIT 1

SHEET 1 OF 1

JOB NO. 889615

FILENAME: 889615.D889615.DRAINAGE DATE: 3/23/98 XREFS: 889614.HZ/DRAINAGE