



GREENCREST SUBDIVISION NO. 3

BOUNDARY PALMER PARK ADD. NO. 12

WIRWENZKI SUB.

DUDGE SUBDIVISION

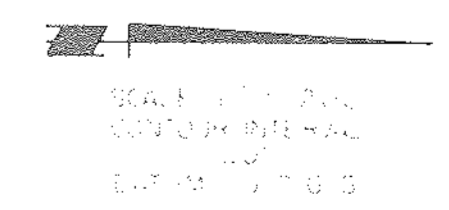
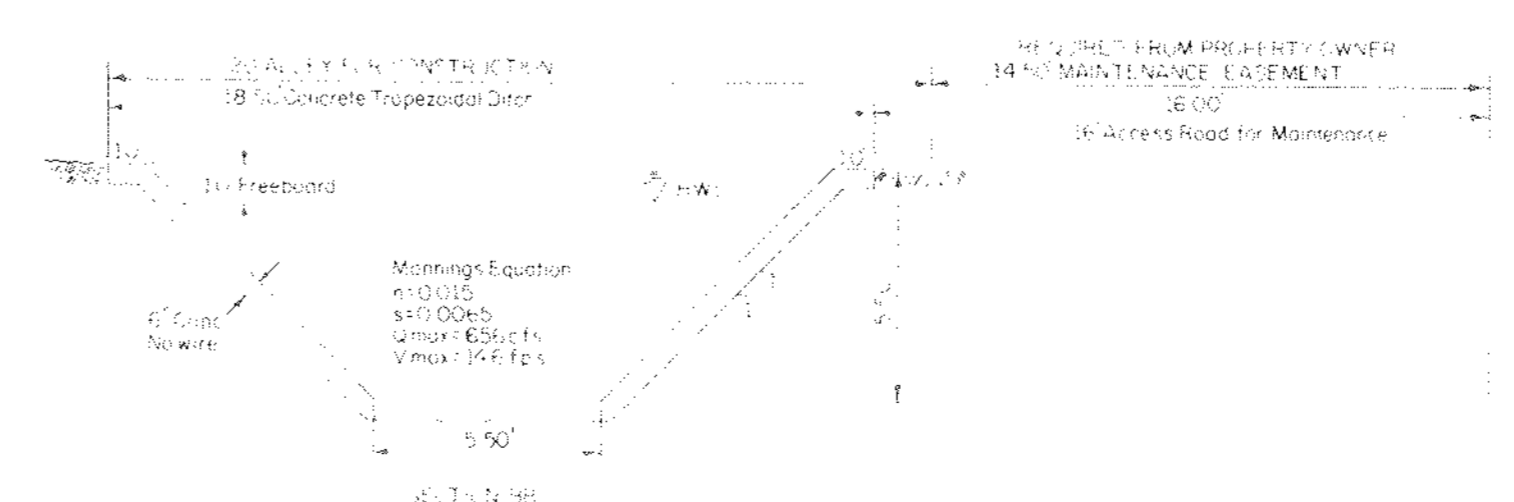
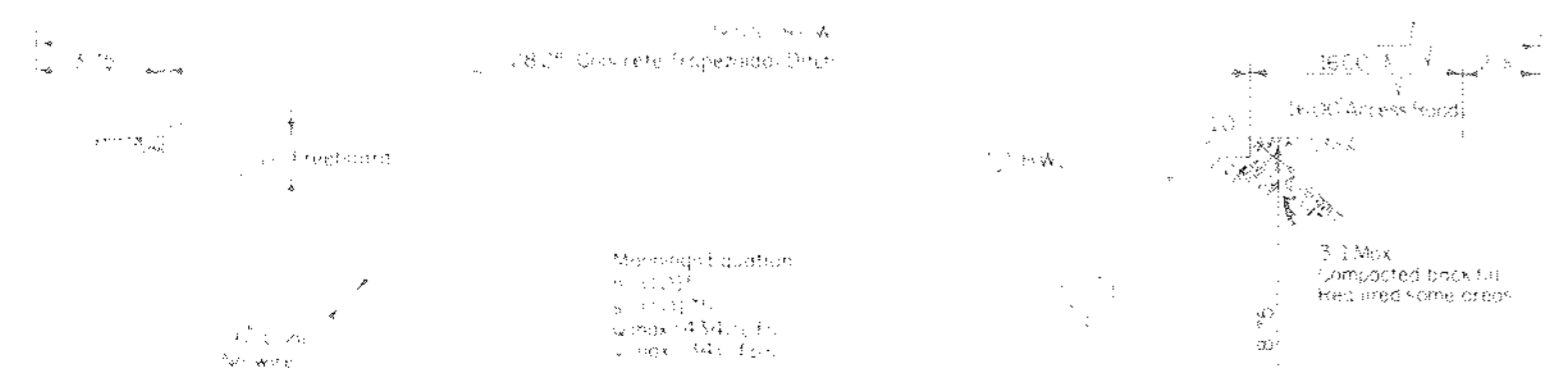
3 SUBDIVISION

SHOPPERS WORLD SUB.

VILLAGE SEVEN FILING NO. 5

VILLAGE GREEN PARK

Existing State Hwy Dept Triple Concrete Culvert Type 13-16 A



**PALMER PARK ADDITION NO. 12
MASTER DRAINAGE PLAN**

PROPOSED ALIGNMENT

DATE: 11/11/11	PROJECT: PALMER PARK ADDITION NO. 12	DRAWN BY: J. GIBBS	CHECKED BY: J. GIBBS
SCALE: AS SHOWN	PROJECT NO.: 11-11-11	DATE: 11/11/11	PROJECT: PALMER PARK ADDITION NO. 12