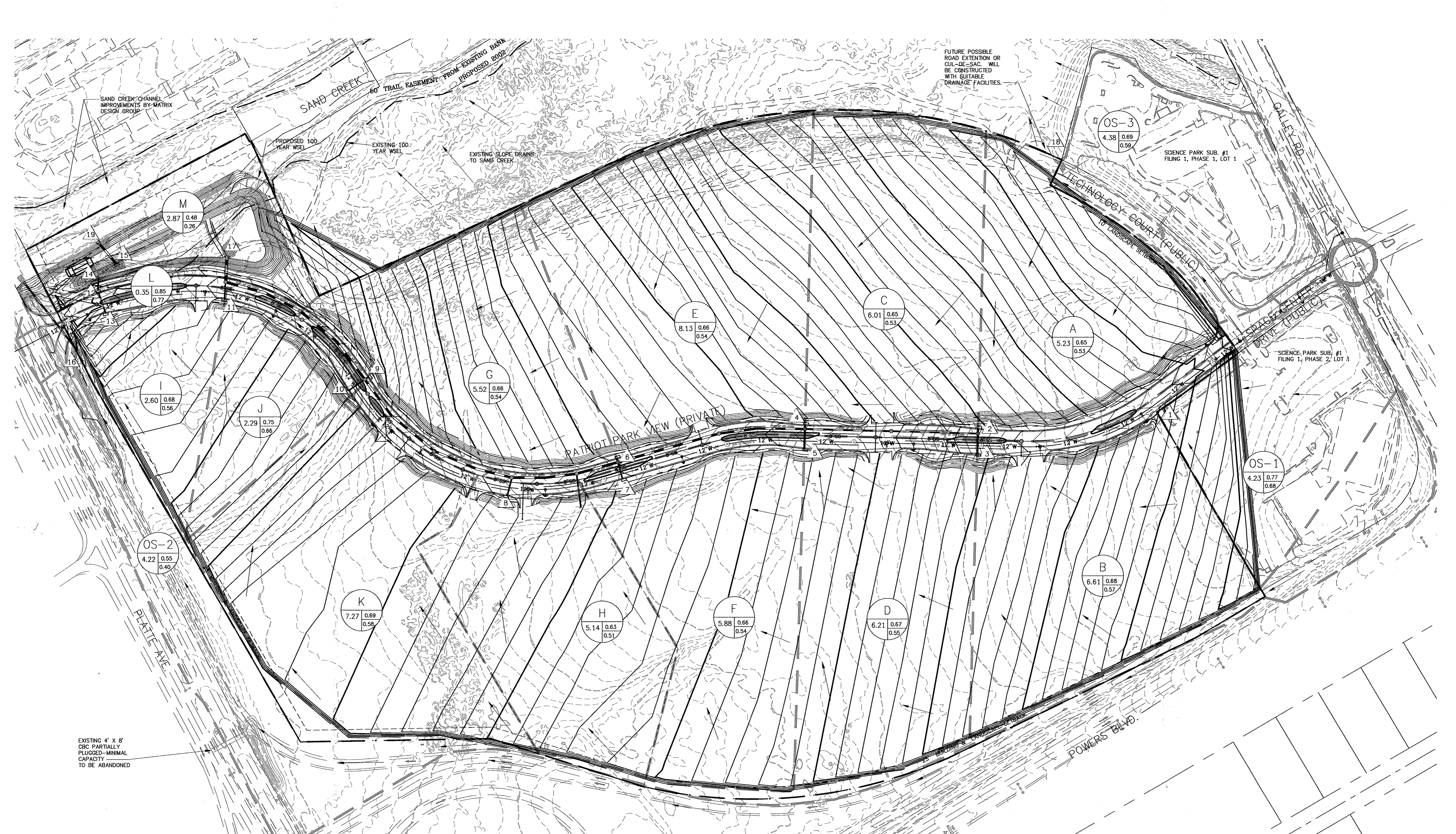


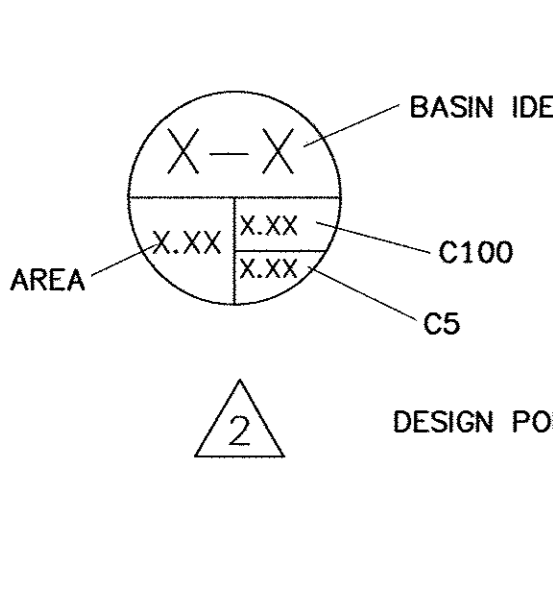
DRAWING NAME: PATRIOT PARK DRAINAGE PLAN
 DATE: _____ TIME: _____
 SERVER: _____ SERVICE: _____
 PATH: _____ PROJ. NO: _____



NO.	BY	DATE	REVISIONS

PATRIOT PARK DRAINAGE PLAN
 PREPARED FOR: PATRIOT PARK, LLC
 DATE SUBMITTED: MAY 2005

NOTICE
 BEYOND ENGINEERING
 5225 N. ACADEMY BLVD, SUITE 304 COLORADO SPRINGS, CO. 80918
 719.268.8500 TEL 719.268.9200 FAX WWW.NOLTE.COM



LEGEND

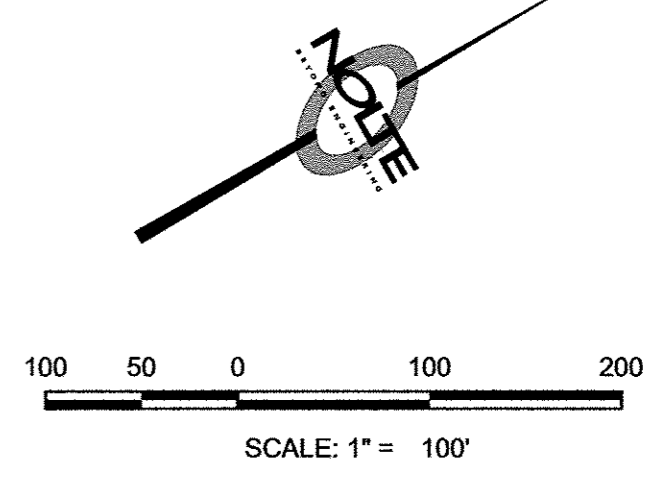
——— DRAINAGE FLOW DIRECTION
 ——— BASIN BOUNDARY LINE
 ——— PROP STORM DRAIN
 ——— PROP MAJOR CONTOUR
 ——— PROP MINOR CONTOUR
 - - - - EX MAJOR CONTOUR
 - - - - EX MINOR CONTOUR
 - - - - CONCEPTUAL OVERLOT MAJOR CONTOUR
 - - - - CONCEPTUAL OVERLOT MINOR CONTOUR

BASIN SUMMARY

BASIN	AREA (Ac)	C _s	C ₁₀₀	Q ₁ (cfs)	Q ₁₀₀ (cfs)
A	5.23	0.53	0.85	10.9	23.7
B	6.61	0.57	0.68	14.6	31.1
C	6.01	0.53	0.65	12.4	26.9
D	6.21	0.55	0.67	13.5	29.0
E	8.13	0.54	0.66	16.1	34.9
F	5.88	0.54	0.66	12.7	27.4
G	5.52	0.54	0.66	12.9	27.9
H	5.14	0.51	0.63	10.4	23.2
I	2.60	0.56	0.68	6.3	13.4
J	2.29	0.66	0.75	6.6	13.5
K	7.27	0.58	0.69	16.0	33.8
L	0.35	0.77	0.85	1.3	2.6
M	2.33	0.26	0.48	2.5	8.8
OS-1	4.23	0.68	0.77	13.5	27.2
OS-2	4.22	0.40	0.55	3.9	9.7
OS-3	4.36	0.59	0.69	10.6	22.4

DESIGN POINT FLOWS

DESIGN POINT	Q ₁ (cfs)	Q ₁₀₀ (cfs)
1	13.5	27.2
2	10.9	23.7
3	33.0	54.1
4	12.4	26.9
5	13.5	29.0
6	16.1	34.9
7	12.7	27.4
8	10.4	23.2
9	12.9	27.9
10	16.0	33.8
11	6.6	13.5
12	1.3	2.6
13	6.3	13.4
14	7.3	15.44
15	215.0	303.8
16	3.9	9.7
17	127.2	272.4
18	10.6	22.4
19	0.57	0.57



STATEMENT:
 THE CITY OF COLORADO SPRINGS RECOGNIZES THE DESIGN ENGINEER AS HAVING RESPONSIBILITY FOR THE DESIGN; THE CITY HAS LIMITED ITS SCOPE OF REVIEW ACCORDINGLY. RESUBMITTAL REQUIRED IF CONSTRUCTION HAS NOT COMMENCED WITHIN 180 DAYS AFTER REVIEW DATE.

WASTEWATER DESIGN APPROVAL:
 SIGNED: _____ DATE: _____
 PROJECT NO: 2002-S142
 RMS NO: 1147944
IN CASE OF ERRORS OR OMISSIONS WITH THE SEWER DESIGN AS SHOWN ON THIS DOCUMENT THE STANDARDS AS DEFINED IN THE "RULES AND REGULATIONS FOR THE INSTALLATION OF SEWER MAINS" SHALL RULE. APPROVAL EXPIRES 180 DAYS FROM DESIGN APPROVAL.

UTILITY GRADE APPROVAL:
 SIGNED: _____ DATE: _____
 FOR THE CITY ENGINEER
CENTERLINE LINE AND GRADE IS REVIEWED FOR CONFORMANCE TO THE CITY STANDARDS TO ALLOW FOR THE DESIGN AND CONSTRUCTION OF UTILITY MAINS. DRAINAGE FACILITIES DESIGN HAS BEEN CHECKED BY THE DESIGN ENGINEER TO AVOID CONFLICTS WITH UTILITY MAINS. THIS IS NOT A CURB & GUTTER REVIEW AND THE DEVELOPER WILL BE RESPONSIBLE FOR ANY COSTS DUE TO DESIGN CHANGES PRIOR TO CURB & GUTTER REVIEW. THIS REVIEW EXPIRES IN 180 DAYS.

UNDERDRAIN REVIEW:
 SIGNED: _____ DATE: _____
 FOR THE CITY ENGINEER
REVIEW BY WASTEWATER DIVISION IS FOR SYSTEM SEPARATION AND DISCHARGE TO OPEN OR STORM SEWER. THE WASTEWATER DIVISION IS NOT RESPONSIBLE FOR SUBDRAIN SYSTEM MAINTENANCE.
 NOTE: UNDERDRAIN SYSTEM WILL NOT BE MAINTAINED BY THE PUBLIC WORKS DEPARTMENT.

REVIEW:
 TRAFFIC ENGINEERING: _____ DATE: _____
 STREET DESIGN: _____ DATE: _____
 CURB & GUTTER: _____ DATE: _____
 FINAL REVIEW: _____ DATE: _____
 DRAINAGE DESIGN: _____ DATE: _____
 DRAINAGE REVIEW: _____ DATE: _____

BENCHMARK:
 City of Colorado Springs FIMS bench mark F-83.
 Located on the north side of East Platte Avenue approximately 2100 linear feet west of the centerline of the Sand Creek drainage channel.
 Elevation = 6177.09

DESIGN DATA:
 SIDEWALKS: _____ LOCATION: ATTACHED DETACHED
 CURB TYPE: 1 5 (REF. DETAIL SHEET)
 ROW WIDTH: _____ F/C-F/C: _____
 STREET TYPE: _____

STATEMENT:
 ANY CHANGES OR ALTERATIONS EFFECTING THE GRADE ALIGNMENT, ELEVATION AND DEPTH OF COVER OF SEWERS AND APPURTENANCES SHOWN ON THIS DRAWING SHALL BE THE RESPONSIBILITY OF THE DEVELOPER. THE OWNER/DEVELOPER SHALL BE RESPONSIBLE FOR OPERATIONAL DAMAGES AND DEFECTS IN THE INSTALLATION AND MATERIAL FOR MAINS AND SERVICES FROM THE DATE OF APPROVAL UNTIL FINAL ACCEPTANCE IS ISSUED.
 BY: _____ DATE: _____

SHEET NUMBER
 1 OF 1 SHEETS
 SCALE
 VERTICAL: 1" = 1"
 HORIZONTAL: 1" = 1"
 JOB NUMBER
 CSB014300