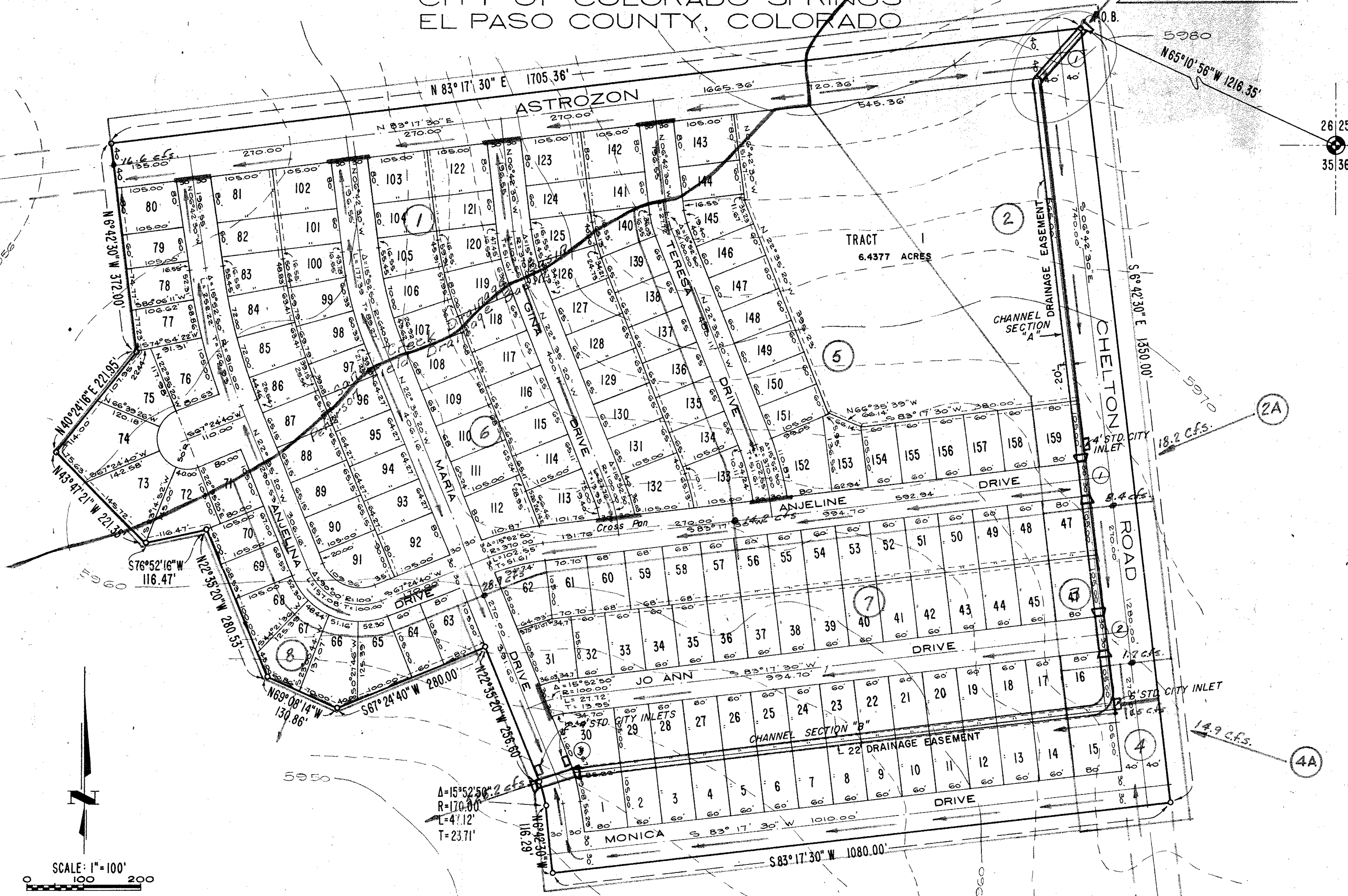


# PIKES PEAK PARK SUBDIVISION NO. 28

IN THE  
CITY OF COLORADO SPRINGS  
EL PASO COUNTY, COLORADO

Point "A" 436 cfs.



**EASEMENTS:**  
BOTH SIDES OF ALL SIDE LOT LINES ARE HEREBY PLATTED WITH A 5 FOOT, AND BOTH SIDES OF ALL REAR LOT LINES WITH A 7 FOOT, "UNLESS OTHERWISE SHOWN GREATER IN WIDTH", EASEMENT FOR PUBLIC UTILITY AND DRAINAGE PURPOSES, WITH SOLE RESPONSIBILITY FOR MAINTENANCE BEING VESTED WITH ADJACENT PROPERTY OWNERS.

## DRAINAGE PLAN