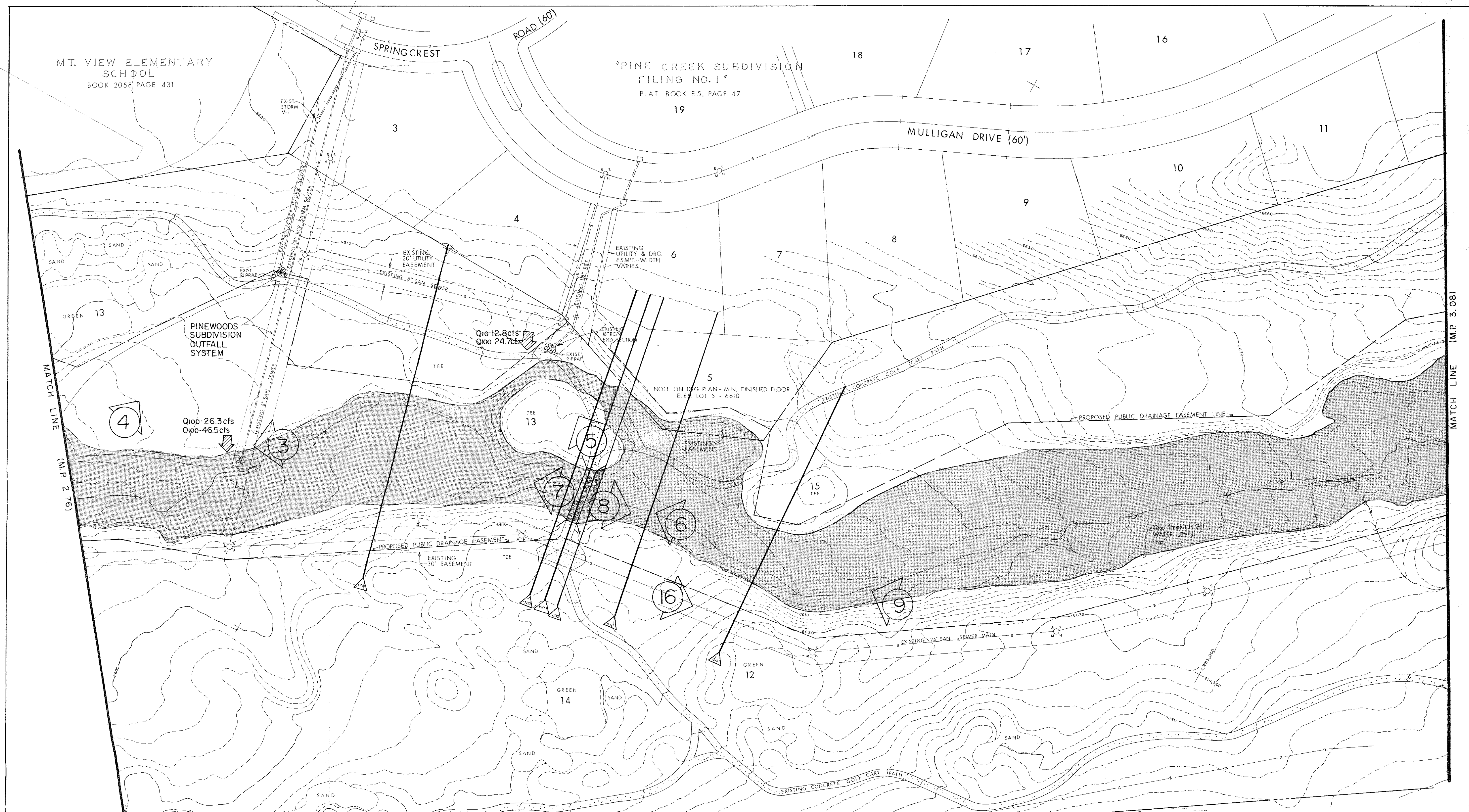


MT. VIEW ELEMENTARY SCHOOL
BOOK 2058 PAGE 431

'PINE CREEK SUBDIVISION
FILING NO. 1'
PLAT BOOK E-5, PAGE 47



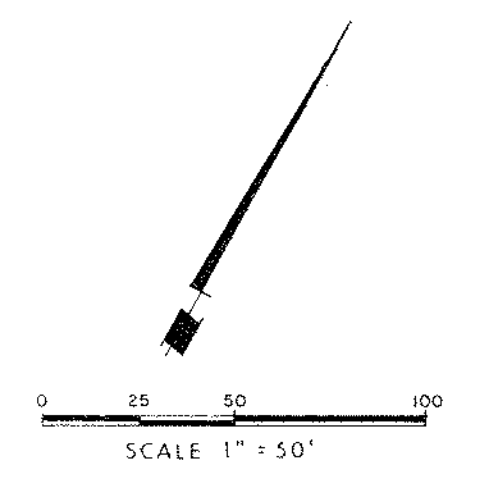
MATCH LINE (M.P. 2.76)

MATCH LINE (M.P. 3.08)

Contour interval: 2' Datum: O/N Briargate/U.S.G.S.

LEGEND

- CROSS SECTION DESIGNATION
- CROSS SECTION LOCATION
- DIRECTION OF PHOTO
- PHOTO NUMBER PHOTO LOCATION
- Q100 FLOOD LIMITS
- Q100 (max) HIGH WATER LEVEL
- M.P. PINE CREEK MILE POST DESIGNATION



NO.	DATE	REVISION	BY

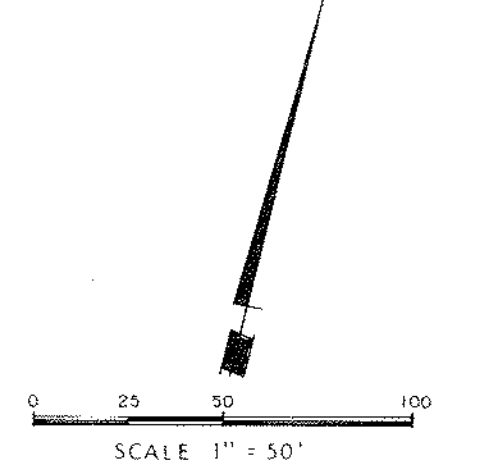
PROJECT	CORRIDOR PLAN	FILED BOOK NO.	N/A
	M.P. 2.76 to 3.08	SCALE	1"=50'
DATE	1/11/93	DESIGNED BY	CMG
PROJECT	PINE CREEK CORRIDOR - Phase I	CHECKED BY	RGD/TLW
	Detention Facility No. 1 to Chapel Hills Drive	DESIGNED BY	SGB/TLW
PROJECT NO.	91025-2	PROJECT NO.	91025-2
Obering, Wurth & Associates Consulting Civil Engineers Professional Land Surveyors 1015 Elton Drive Colorado Springs, Colorado 80907 Phone (719) 531-6200		2 of 3 SHEETS	



Contour interval: 2'
Datum: O/N Briargate/U.S.G.S.

LEGEND

- CROSS SECTION DESIGNATION
- CROSS SECTION LOCATION
- DIRECTION OF PHOTO
- PHOTO NUMBER
PHOTO LOCATION
- FLOOD LIMITS
- HIGH WATER LEVEL
- M.P. PINE CREEK MILE POST DESIGNATION



NO.	DATE	REVISION	BY

<p>CORRIDOR PLAN M.P. 3.08 to 3.34</p> <p>PINE CREEK CORRIDOR - Phase I Detention Facility No. 1 to Chapel Hills Drive</p> <p>Obering, Wurth & Associates Consulting Civil Engineers Professional Land Surveyors 1015 Elkton Drive Colorado Springs, Colorado 80907 Phone (719) 531-6200</p>	<p>SCALE: N/A 1"=50'</p> <p>DATE: 1/11/93</p> <p>DESIGNED BY: RGO/TLW DRAWN BY: SCB/TLW</p> <p>PROJECT NO.: 91025-2</p> <p>3 of 3 sheets</p>
---	--