

PINE CREEK DETENTION FACILITY "C"

CITY OF COLORADO SPRINGS, COUNTY OF EL PASO, STATE OF COLORADO

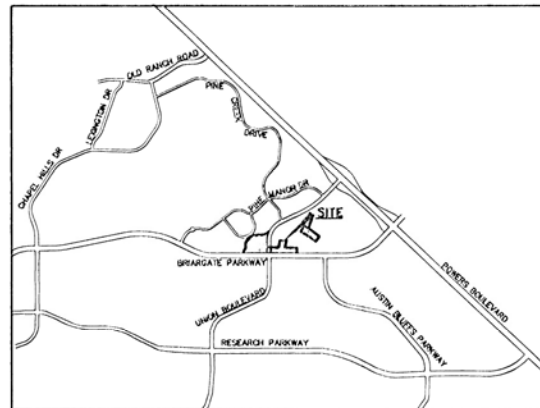
GRADING AND EROSION CONTROL PLANS

JULY 1998

GENERAL NOTES:

1. IT SHALL BE THE RESPONSIBILITY OF THE CONTRACTOR TO VERIFY THE EXISTENCE AND LOCATION OF ALL UNDERGROUND UTILITIES ON AND ADJACENT TO THE SITE. THE OMISSION FROM OR THE INCLUSION OF UTILITY LOCATIONS ON THE PLANS SHALL NOT BE CONSTRUED AS THE NON-EXISTENCE OF OR A DEFINITE LOCATION OF EXISTING UNDERGROUND UTILITIES.
2. THE CONTRACTOR WILL TAKE THE NECESSARY PRECAUTIONS TO PROTECT EXISTING UTILITIES, BUILDINGS, FENCES, AND ROADWAYS FROM DAMAGE DUE TO THIS OPERATION. ANY DAMAGE TO THE ABOVE WILL BE REPAIRED AT THE CONTRACTOR'S EXPENSE, AND ANY SERVICE DISRUPTION WILL BE SETTLED BY THE CONTRACTOR.
3. OVERLOT GRADING SHALL BE COMPLETED TO A SUBGRADE TOLERANCE OF PLUS OR MINUS 0.2'.
4. CONTRACTOR SHALL OBTAIN COPIES OF THE SOILS REPORT FROM THE GEOTECHNICAL ENGINEER AND KEPT ONSITE DURING ALL EARTHWORK OPERATIONS.
5. THE SITE SHALL BE STRIPPED A MINIMUM OF 0.5' BELOW EXISTING GRADE AND THE TOPSOIL STOCKPILED ON OR OFFSITE FOR REUSE.
6. MAXIMUM CUT/FILL SLOPES SHALL NOT EXCEED 3:1, UNLESS OTHERWISE NOTED.
7. THE PRIMARY FUNCTION OF THIS FACILITY IS STORMWATER DETENTION. AS SUCH IT WILL BE EXPECTED TO ACT AS A DAM PERIOD DURING AND FOLLOWING ANY MAJOR STORM. ANY USE OR ACTIVITY THAT WOULD COMPROMISE THIS FUNCTION SHOULD BE CAREFULLY CONTROLLED, I.E. USES THAT ENTAIL OBJECTS THAT COULD CLOG THE SPILLWAY OR COMPROMISE THE BERM OR OUTLET SPILLWAY AREA.
8. BENCHMARKS:

1. 30" CUT SQUARE ON TOP OF CURB ON BRIARGATE PARKWAY APPROXIMATELY 300±' EAST OF THE INTERSECTION OF BRIARGATE PARKWAY AND LEXINGTON DRIVE.
EL. = 6798.71
2. THE SOUTH 1/4 CORNER OF SECTION 27 BEING A 3-1/4" ALUMINUM CAP STAMPED L.S. 10958 APPROXIMATELY 2540' EAST OF THE EXISTING END OF CURB ON BRIARGATE PARKWAY AND APPROXIMATELY 660' NORTH OF THE SAME.
EL. = 6823.58

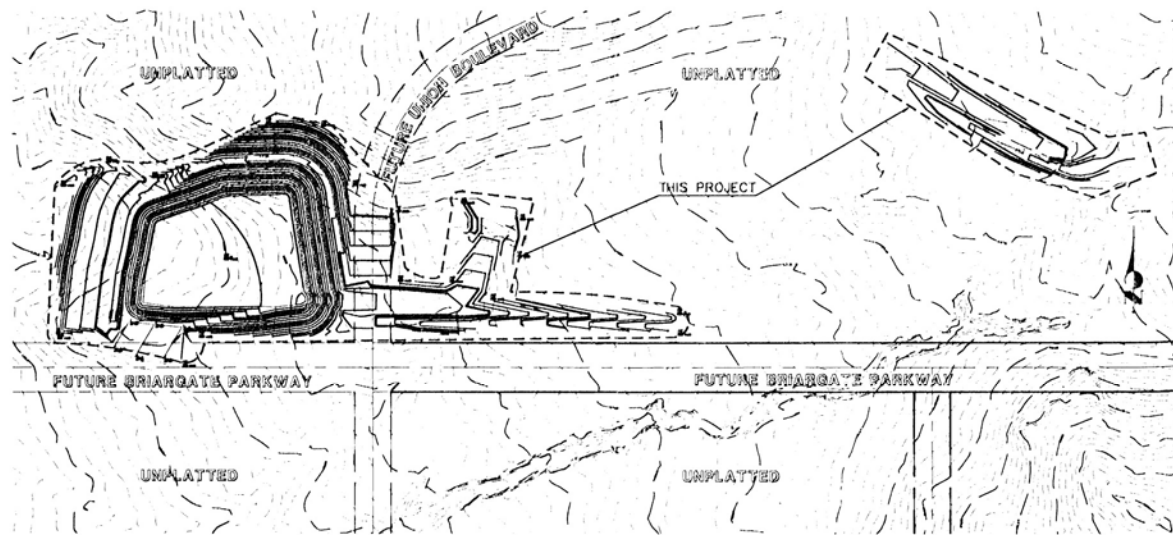


VICINITY MAP
NTS

EROSION CONTROL CRITERIA:

EROSION AND SEDIMENT CONTROL SHALL BE THE RESPONSIBILITY OF THE CONTRACTOR. EROSION CONTROL MEASURES SHALL BE IMPLEMENTED IN A MANNER THAT WILL PROTECT PROPERTIES AND PUBLIC FACILITIES FROM ADVERSE EFFECTS OF EROSION AND SEDIMENTATION AS A RESULT OF CONSTRUCTION AND EARTH ACTIVITIES WITHIN THE PROJECT SITE.

1. INSTALL ALL EROSION CONTROL MEASURES INDICATED ON THE EROSION CONTROL EROSION PLAN PRIOR TO ANY EARTHWORK DISTURBANCE. THE CONTRACTOR SHALL BE RESPONSIBLE FOR ADDITIONAL EROSION CONTROL MEASURES INCIDENTAL TO THE WORK.
2. THE CONTRACTOR SHALL CHECK ALL EROSION CONTROL MEASURES AFTER EVERY RAINFALL. ALL NECESSARY REPAIRS OR REPLACEMENT SHALL BE DONE IMMEDIATELY.
3. SEDIMENT TRAPPED BY CHECKDAMS, SEDIMENT BASINS AND SILT FENCES SHALL BE PERIODICALLY REMOVED AS NECESSARY TO ENSURE PROPER FUNCTION OF THESE MEASURES.
4. ALL NECESSARY EROSION AND SEDIMENT CONTROL MEASURES SHALL REMAIN IN PLACE AND MAINTAINED UNTIL SUCH TIME AS THE EROSION AND SEDIMENTATION POTENTIAL IS MITIGATED AND THE SITE DEEMED STABLE BY REVIEW AUTHORITIES. AT SUCH TIME THE CONTRACTOR SHALL REMOVE ALL EROSION CONTROL DEVICES, COLLECTED DEBRIS AND SEDIMENT FROM THE SITE AND AND DISPOSE OF ALL SUCH MATERIALS IN AN ACCEPTABLE MANNER.



INDEX MAP
SCALE 1" = 300'

EROSION CONTROL COST OPINION:

1. 9 EACH - STRAW BALE FOR CHECK DAMS @ \$4.00/BALE	\$ 108
3. 1440 LF SILT FENCE @ \$1.00/LF	\$ 1440
4. 25% MAINTENANCE AND REPLACEMENT	\$ 387
5. 22.0 AC. OF RESEEDING @ \$500.00/AC.	\$ 11000
TOTAL	\$ 12935

JR ENGINEERING, LTD. CANNOT AND DOES NOT GUARANTEE THAT THE CONSTRUCTION COSTS WILL NOT VARY FROM THESE OPINIONS OR PROBABLE CONSTRUCTION COSTS. THESE OPINIONS REPRESENT OUR BEST JUDGEMENT AS A DESIGN PROFESSIONAL FAMILIAR WITH THE CONSTRUCTION INDUSTRY AND IN THIS DEVELOPMENT.

AGENCIES:

DEVELOPER: LP 47, LLC dba LA PLATA INVESTMENTS
7150 CAMPUS DRIVE, SUITE 365
COLORADO SPRINGS, COLORADO 80920
MR. BOB INGELS (719) 260-7477

CIVIL ENGINEER: JR ENGINEERING, LTD.
4935 NORTH 30TH STREET
COLORADO SPRINGS, COLORADO 80918
MR. FRANK TRIPI (719) 593-2593

ENGINEERING DIVISION: CITY OF COLORADO SPRINGS
101 W. COSTILLA STREET
COLORADO SPRINGS, COLORADO 80903
MR. TIM MITROS (719) 385-5061

WATER RESOURCES: WASTEWATER:
CITY OF COLORADO SPRINGS
111 S. CASCADE AVENUE, SUITE 201
COLORADO SPRINGS, COLORADO 80903
MR. JERRY VALLE (719) 448-8252

WATER: CITY OF COLORADO SPRINGS
111 S. CASCADE AVENUE, SUITE 201
COLORADO SPRINGS, COLORADO 80903
MRS. JANET KOSCIELSKI (719) 448-8253

GAS DEPT: CITY OF COLORADO SPRINGS
101 S. CONEJOS STREET
COLORADO SPRINGS, COLORADO 80903
MR. DAVE DEUTSCH (719) 688-3520

ELECTRIC DEPT: CITY OF COLORADO SPRINGS
7710 DURANT DRIVE
COLORADO SPRINGS, COLORADO 80920
MR. DAN GIECK (719) 688-4962

TELEPHONE COMPANY: U.S. WEST COMMUNICATIONS (LOCATORS) (800) 922-1987
A.T. & T. (LOCATORS) (719) 635-3674

APPROVALS:

IF SUCH WORK IS PERFORMED IN ACCORDANCE WITH THE GRADING AND EROSION CONTROL PLAN, THE WORK WILL NOT BECOME A HAZARD TO LIFE AND LIMB, ENDANGER PROPERTY, OR ADVERSELY AFFECT THE SAFETY, USE, OR STABILITY OF A PUBLIC WAY, DRAINAGE CHANNEL, OR OTHER PROPERTY.

PREPARED UNDER MY DIRECT SUPERVISION FOR AND ON BEHALF OF JR ENGINEERING, LTD.

Kyle R. Campbell
KYLE R. CAMPBELL, COLORADO P.E. 29794

11/10/98
DATE

THE OWNER WILL COMPLY WITH THE REQUIREMENTS OF THIS GRADING AND EROSION CONTROL PLAN.

Frank Tripi
OWNER

11/12/98
DATE

THIS GRADING PLAN IS FILED IN ACCORDANCE WITH SECTION 15-3-1503 (ENACTED AS ORD. 82-56) OF THE CODE OF THE CITY OF COLORADO SPRINGS, 1980, AS AMENDED. EROSION CONTROL IS REVIEWED IN ACCORDANCE WITH SECTION 4.9 OF THE DRAINAGE CRITERIA MANUAL, OCTOBER 1991, LATEST REVISION.

Tim Mitros
CITY ENGINEER, CITY OF COLORADO SPRINGS

12/14/98
DATE

SHEET INDEX

TITLE SHEET	SHEET 1 OF 4
GRADING PLAN & EROSION CONTROL PLAN	SHEET 2 & 3 OF 4
DROP STRUCTURE	SHEET 4 OF 4

DATE: 11/10/98 REF: NONE

UNTIL SUCH TIME AS THESE DRAWINGS ARE APPROVED BY THE APPROPRIATE REVIEWING AGENCIES, JR ENGINEERING, LTD. ASSUMES NO LIABILITY FOR THE PURPOSES DESIGNATED BY WRITTEN AUTHORIZATION.

48 HOURS BEFORE YOU DIG, CALL UTILITY LOCATORS
1-800-922-1987
CITY OF COLORADO SPRINGS DEPT. OF UTILITIES
GAS, ELECTRIC, WATER AND WASTEWATER

JR Engineering, Ltd.
4855 North 30th Street
Colorado Springs, Colorado 80918
(719) 593-2593 • FAX (719) 528-6613

NO.	SCALE	DATE	BY	REVISION
	NONE	7/9/98	TDS	
			CHK. BY	
			DWN. BY	

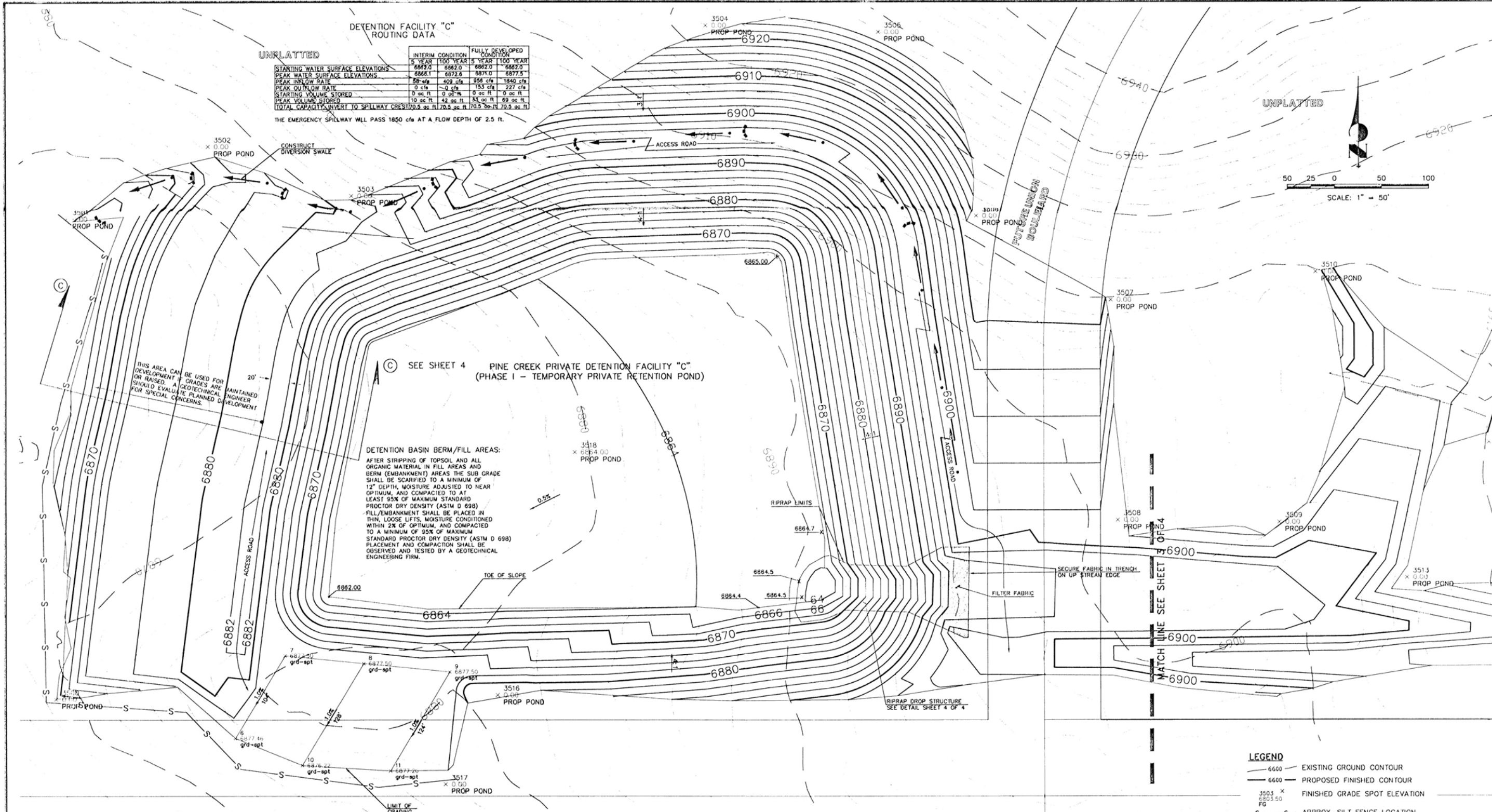
PINE CREEK DETENTION FACILITY "C"
GRADING AND EROSION CONTROL PLANS
TITLE SHEET

SHEET 1 OF 4
JOB NO. 8716.20

DETONATION FACILITY "C"
ROUTING DATA

UNPLATTED	INTERIM CONDITION		FULLY DEVELOPED CONDITION	
	5 YEAR	100 YEAR	5 YEAR	100 YEAR
STARTING WATER SURFACE ELEVATIONS	6862.0	6882.0	6862.0	6877.5
PEAK WATER SURFACE ELEVATIONS	6868.1	6872.6	6871.0	6877.5
PEAK INFLOW RATE	58 cfs	409 cfs	56 cfs	1840 cfs
PEAK OUTFLOW RATE	0 cfs	0 cfs	153 cfs	227 cfs
STARTING VOLUME STORED	0 ac ft	0 ac ft	0 ac ft	0 ac ft
PEAK VOLUME STORED	10 ac ft	42 ac ft	33 ac ft	69 ac ft
TOTAL CAPACITY INVERT TO SPILLWAY CREST	0 ac ft	70.5 ac ft	70.5 ac ft	70.5 ac ft

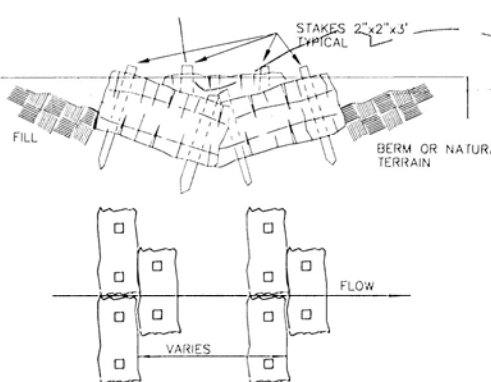
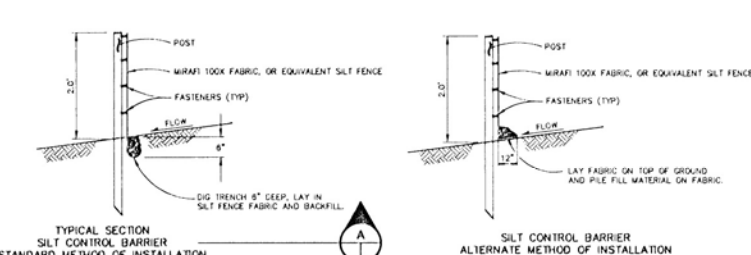
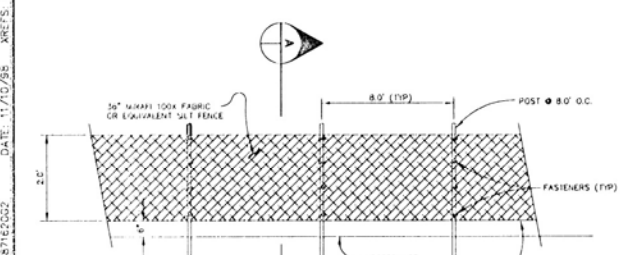
THE EMERGENCY SPILLWAY WILL PASS 1850 cfs AT A FLOW DEPTH OF 2.5 FT.



DETENTION BASIN BERM/FILL AREAS:
AFTER STRIPPING OF TOPSOIL AND ALL ORGANIC MATERIAL IN FILL AREAS AND BERM (EMBANKMENT) AREAS THE SUB GRADE SHALL BE SCARIFIED TO A MINIMUM OF 12" DEPTH, MOISTURE ADJUSTED TO NEAR OPTIMUM, AND COMPACTED TO AT LEAST 95% OF MAXIMUM STANDARD PROCTOR DRY DENSITY (ASTM D 698).
FILL/EMBANKMENT SHALL BE PLACED IN THIN, LOOSE LIFTS, MOISTURE CONDITIONED WITHIN 2% OF OPTIMUM, AND COMPACTED TO A MINIMUM OF 95% OF MAXIMUM STANDARD PROCTOR DRY DENSITY (ASTM D 698).
PLACEMENT AND COMPACTION SHALL BE OBSERVED AND TESTED BY A GEOTECHNICAL ENGINEERING FIRM.

- LEGEND**
- 6600 — EXISTING GROUND CONTOUR
 - 6600 — PROPOSED FINISHED CONTOUR
 - 3503 X 0.00 6803.50 FC FINISHED GRADE SPOT ELEVATION
 - S-S- APPROX. SILT FENCE LOCATION
 - STRAW BALE CHECK DAM
 - DIVERSION SWALE

THE LOCATIONS OF EXISTING UNDERGROUND UTILITIES ARE SHOWN IN AN APPROXIMATE WAY ONLY. THE CONTRACTOR SHALL DETERMINE THE EXACT LOCATION OF ALL EXISTING UTILITIES BEFORE COMMENCING WORK. THE CONTRACTOR SHALL BE FULLY RESPONSIBLE FOR ANY AND ALL DAMAGES WHICH MIGHT BE CAUSED BY HIS FAILURE TO EXACTLY LOCATE AND PRESERVE ANY AND ALL UNDERGROUND UTILITIES.



PREPARED UNDER MY DIRECT SUPERVISION FOR AND ON BEHALF OF JR ENGINEERING, LTD.

UNPLATTED

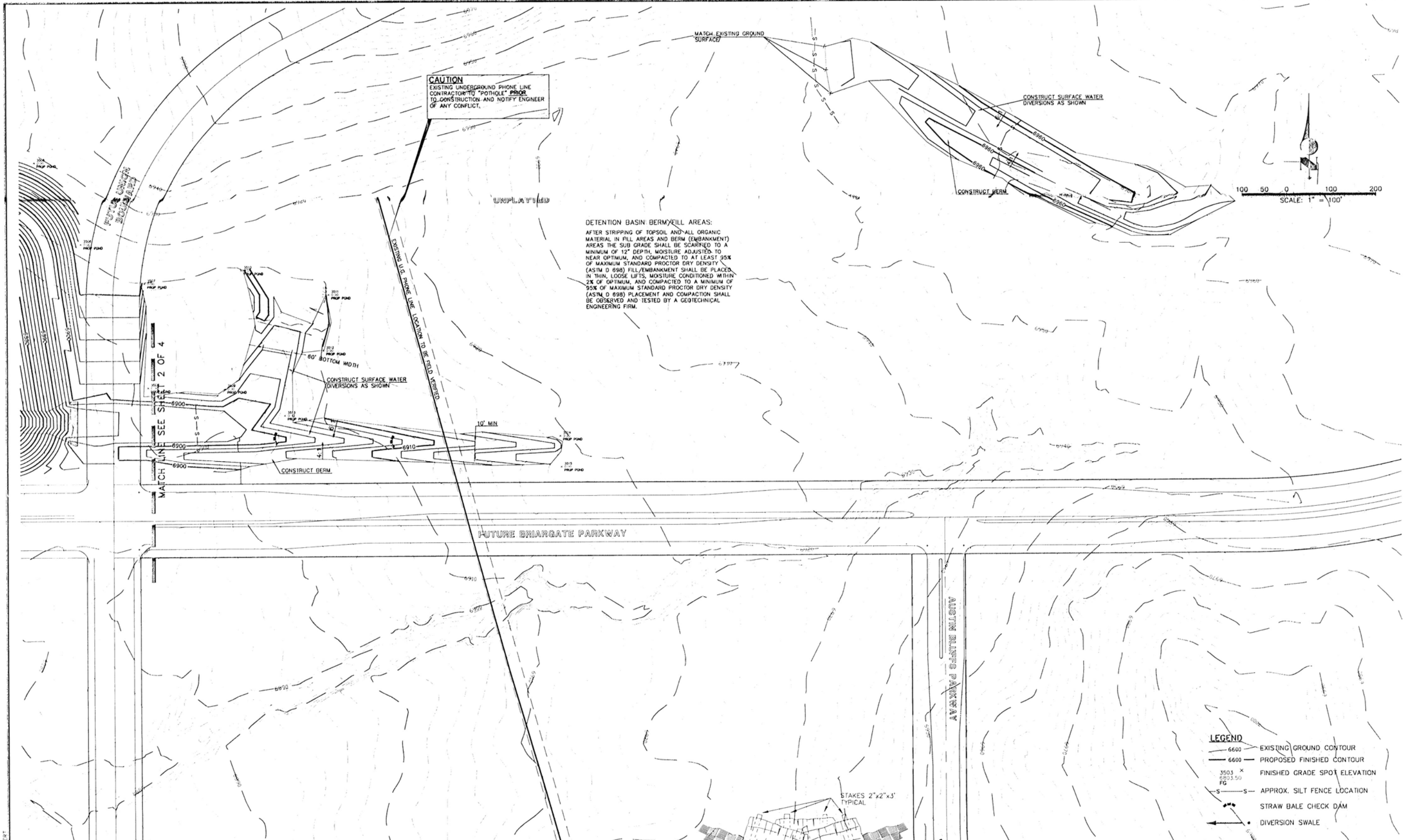
48 HOURS BEFORE YOU DIG,
CALL UTILITY LOCATORS
1-800-922-1987
CITY OF COLORADO SPRINGS DEPT. OF UTILITIES
GAS, ELECTRIC, WATER AND WASTEWATER

JR Engineering, Ltd.
1655 North 30th Street
Colorado Springs, Colorado 80916
(719) 588-2555 • FAX (719) 528-6613

NO.	REVISION	BY	DATE

SCALE	DATE	DES. BY	CHK. BY	DWN. BY
1"=50'	7/9/98	VF/TDS	JRB	JAC

PINE CREEK DETENTION FACILITY "C"
GRADING AND EROSION CONTROL PLANS
SHEET 2 OF 4
JOB NO. 8716.20



CAUTION
EXISTING UNDERGROUND PHONE LINE
CONTRACTOR TO "POTHOLE" PRIOR
TO CONSTRUCTION AND NOTIFY ENGINEER
OF ANY CONFLICT.

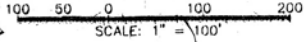
DETENTION BASIN BERM/FILL AREAS:
AFTER STRIPPING OF TOPSOIL AND ALL ORGANIC
MATERIAL IN FILL AREAS AND BERM (EMBANKMENT)
AREAS THE SUB GRADE SHALL BE SCARIFIED TO A
MINIMUM OF 12" DEPTH. MOISTURE ADJUSTED TO
NEAR OPTIMUM, AND COMPACTED TO AT LEAST 95%
OF MAXIMUM STANDARD PROCTOR DRY DENSITY
(ASTM D 698) FILL/EMBANKMENT SHALL BE PLACED
IN THIN, LOOSE LIFTS, MOISTURE CONDITIONED WITHIN
2% OF OPTIMUM, AND COMPACTED TO A MINIMUM OF
95% OF MAXIMUM STANDARD PROCTOR DRY DENSITY
(ASTM D 698) PLACEMENT AND COMPACTOR SHALL
BE OBSERVED AND TESTED BY A GEOTECHNICAL
ENGINEERING FIRM.

CONSTRUCT SURFACE WATER
DIVERSIONS AS SHOWN

CONSTRUCT BERM

CONSTRUCT SURFACE WATER
DIVERSIONS AS SHOWN

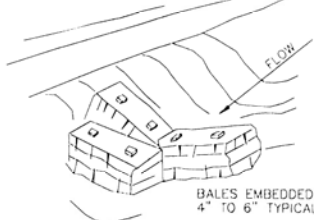
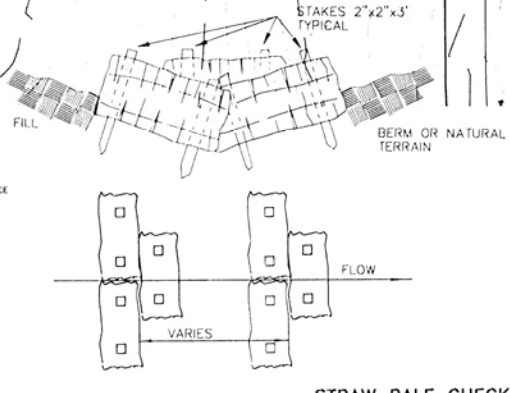
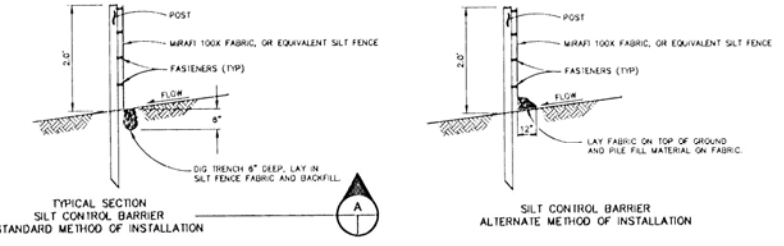
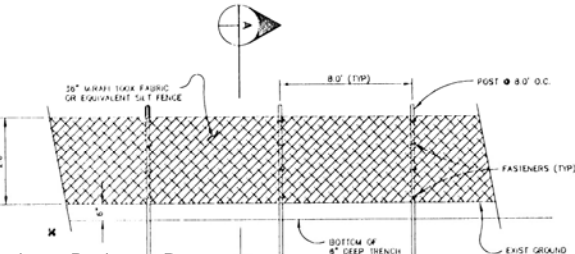
CONSTRUCT BERM



- LEGEND**
- 6600 — EXISTING GROUND CONTOUR
 - 6600 — PROPOSED FINISHED CONTOUR
 - 3503 x 8803.50 FC — FINISHED GRADE SPOT ELEVATION
 - S—S — APPROX. SILT FENCE LOCATION
 - STRAW BALE CHECK DAM
 - DIVERSION SWALE

THE LOCATIONS OF EXISTING UNDERGROUND UTILITIES ARE SHOWN IN AN APPROXIMATE WAY ONLY. THE CONTRACTOR SHALL DETERMINE THE EXACT LOCATION OF ALL EXISTING UTILITIES BEFORE COMMENCING WORK. THE CONTRACTOR SHALL BE FULLY RESPONSIBLE FOR ANY AND ALL DAMAGES WHICH MIGHT BE CAUSED BY HIS FAILURE TO EXACTLY LOCATE AND PRESERVE ANY AND ALL UNDERGROUND UTILITIES.

PREPARED UNDER MY DIRECT SUPERVISION FOR AND ON BEHALF OF JR ENGINEERING, LTD.



UNTIL SUCH TIME AS THESE DRAWINGS ARE APPROVED BY THE APPROPRIATE REVIEWING AGENCIES THEIR USE ONLY FOR THE PURPOSES DESIGNATED BY WRITTEN AUTHORIZATION.

48 HOURS BEFORE YOU DIG, CALL UTILITY LOCATORS
1-800-422-1987
 CITY OF COLORADO SINGS DEPT. OF UTILITIES GAS, ELECTRIC, WATER AND WASTEWATER

JRE Engineering, Ltd.
 4855 North 30th Street
 Colorado Springs, Colorado 80919
 (719) 593-2555 • FAX (719) 528-6613

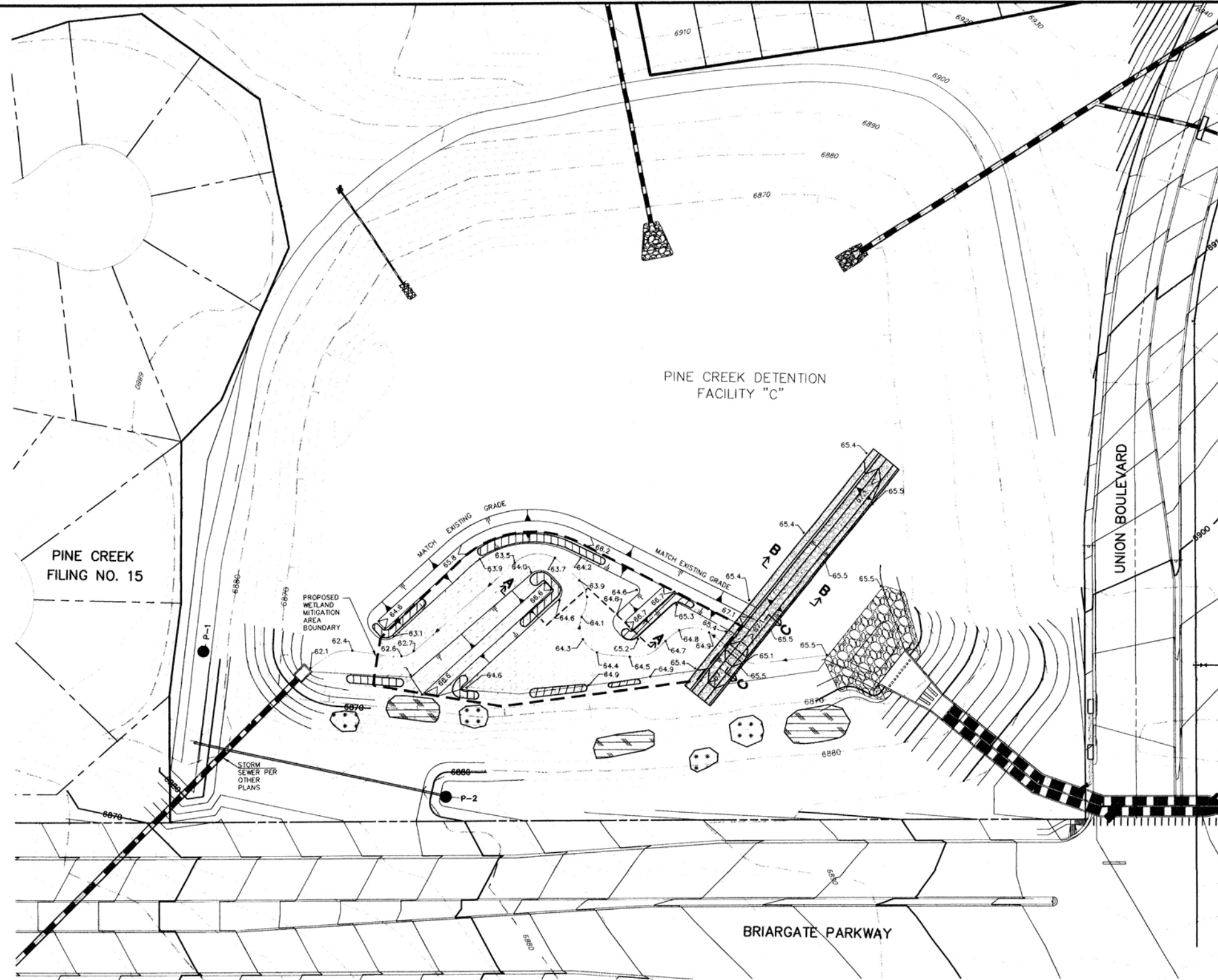
SCALE	DATE	DES. BY	CHK. BY	DWN. BY
1"=100'	7/9/98	VF/TDS	JRB	JAC

NO.	REVISION	BY	DATE

PINE CREEK DETENTION FACILITY "C"
 GRADING AND EROSION CONTROL PLANS
 SHEET 3 OF 4
 JOB NO. 8716.20

0310-06-1
Wetland Grading, Planting

0310-06
Features: Drainage
Sheet 1 of 1

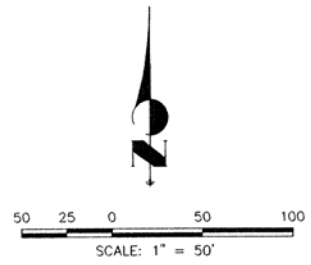


**DETENTION FACILITY "C"
PLAN VIEW**
SCALE: 1"=50'

BENCHMARKS:

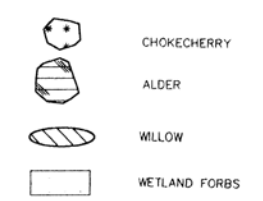
A. SET NAIL WITH BRASS DISK ON THE NORTHWEST CORNER OF STORM INLET ON EAST SIDE OF LEXINGTON DRIVE APPROXIMATELY 50' SOUTH OF BRIARGATE PARKWAY. ELEVATION = 6805.15

B. NAIL WITH BRASS DISK SOUTHEAST CORNER INLET, NORTH SIDE OF CHARITY DRIVE AT NORTHEAST CORNER OF CHARITY DRIVE ELEVATION = 6910.18



- NOTES:**
- ALL MATERIALS AND INSTALLATION PROCEDURES SHALL BE IN COMPLIANCE WITH THE CITY OF COLORADO SPRINGS, ENGINEERING DIVISION SUBDIVISION POLICY MANUAL AND STANDARD SPECIFICATIONS.
 - MAJOR GRADING AND INLET AND OUTLET FACILITIES ARE TO BE CONSTRUCTED PER THE PLANS FOR "BRIARGATE PARKWAY STORM DRAIN" AS REVISED JULY 2003, BY J.R. ENGINEERING. THE PROPOSED WETLAND MITIGATION AREA SHALL BE GRADED PER THIS PLAN.
 - THE ENTIRE AREA SHOWN TO BE PLANTED WITH WETLAND FORBS OR WILLOWS SHALL BE OVER-EXCAVATED BY 16" AVERAGE, 8" MINIMUM AND FILLED WITH TOP SOIL. TOP SOIL SHALL CONTAIN SUFFICIENT ORGANIC MATTER TO SUPPORT THE PROPOSED PLANTS. THE SOIL SHALL BE COMPACTED FIRM ENOUGH TO RETAIN FORM AND RESIST EROSION BUT SHALL BE LOOSE ENOUGH TO ALLOW PLANT GROWTH.
 - PROPOSED CONTOURS ARE NOT SHOWN ON THE POND BOTTOM FOR CLARITY.
 - IT SHALL BE THE RESPONSIBILITY OF THE CONTRACTOR TO VERIFY THE EXISTENCE AND LOCATION OF ALL ABOVE GROUND AND UNDERGROUND UTILITIES ALONG THE ROUTE OF THE WORK. THE OMISSION FROM OR THE INCLUSION OF THE UTILITY LOCATIONS ON THE PLANS IS NOT BE CONSIDERED AS THE NONEXISTENCE OF OR A DEFINITE LOCATION OF EXISTING ABOVE GROUND AND UNDERGROUND UTILITIES.
 - THE CONTRACTOR WILL TAKE THE NECESSARY PRECAUTIONS TO PROTECT EXISTING UTILITIES FROM DAMAGE DUE TO THIS OPERATION. ANY DAMAGE TO THE UTILITIES WILL BE REPAIRED AT THE CONTRACTORS EXPENSE, AND ANY SERVICE DISRUPTION WILL BE SETTLED BY THE CONTRACTOR.

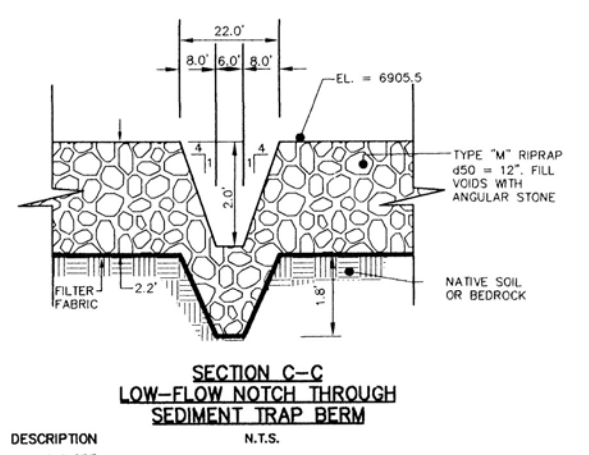
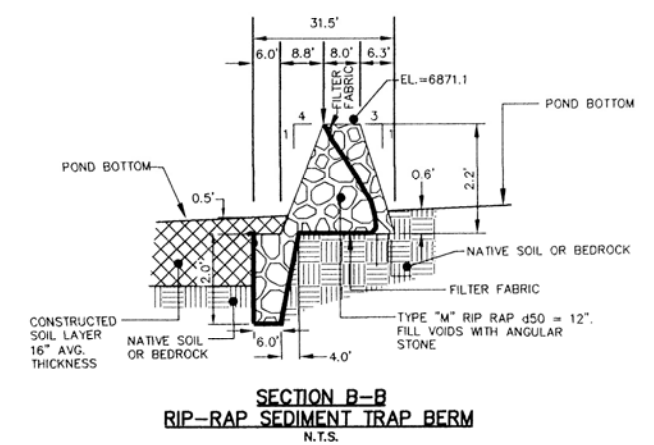
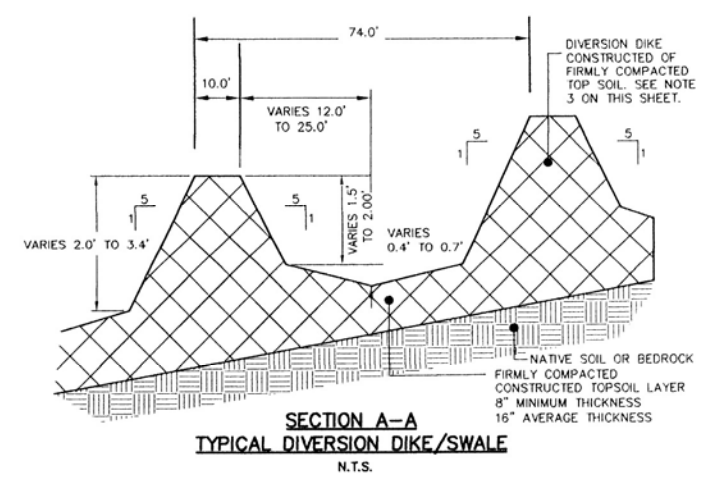
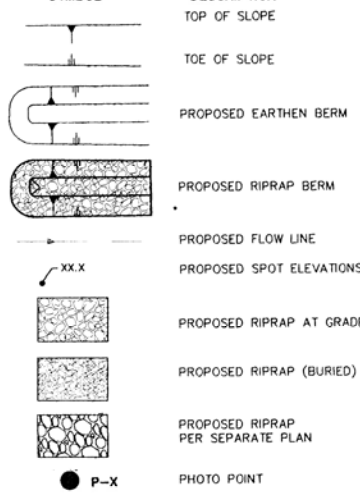
PROPOSED PLANTING SYMBOLS



QUESTIONS REGARDING PLANTING SHOULD BE DIRECTED TO TRENT MILLER OF SWCA (303) 487-1183.

Revised: Kim Miller 10/27/03

LEGEND



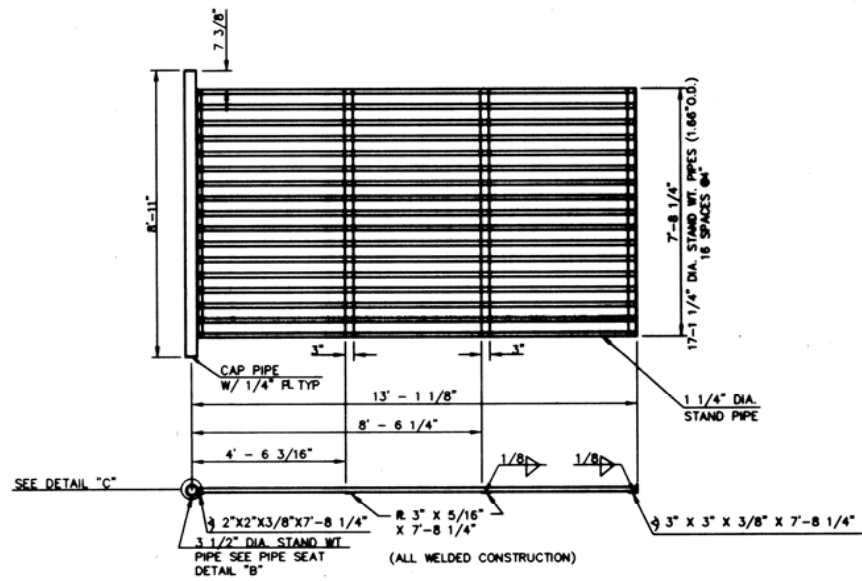
THE LOCATIONS OF EXISTING ABOVE GROUND AND UNDERGROUND UTILITIES ARE SHOWN IN AN APPROXIMATE WAY ONLY. THE CONTRACTOR SHALL DETERMINE THE EXACT LOCATION OF ALL EXISTING UTILITIES BEFORE COMMENCING WORK. THE CONTRACTOR SHALL BE FULLY RESPONSIBLE FOR ANY AND ALL DAMAGES WHICH MIGHT BE CAUSED BY HIS FAILURE TO EXACTLY LOCATE AND PRESERVE ANY AND ALL ABOVE GROUND AND UNDERGROUND UTILITIES.

**84 HOURS BEFORE YOU DIG,
CALL UTILITY LOCATORS
1-800-922-1987**
CITY OF COLORADO SPRINGS DEPARTMENT OF UTILITIES
GAS, ELECTRIC, WATER AND WASTEWATER

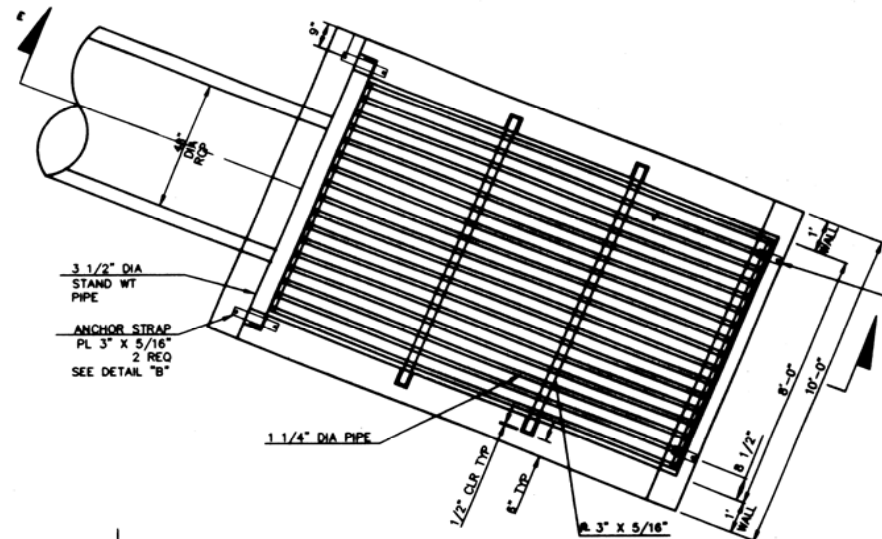
PREPARED UNDER MY DIRECT SUPERVISION FOR AND ON BEHALF OF J.R. ENGINEERING

Nancy Cassinger
NANCY S. FOSSINGER, COLORADO P.E. 10/27/03
Page 45

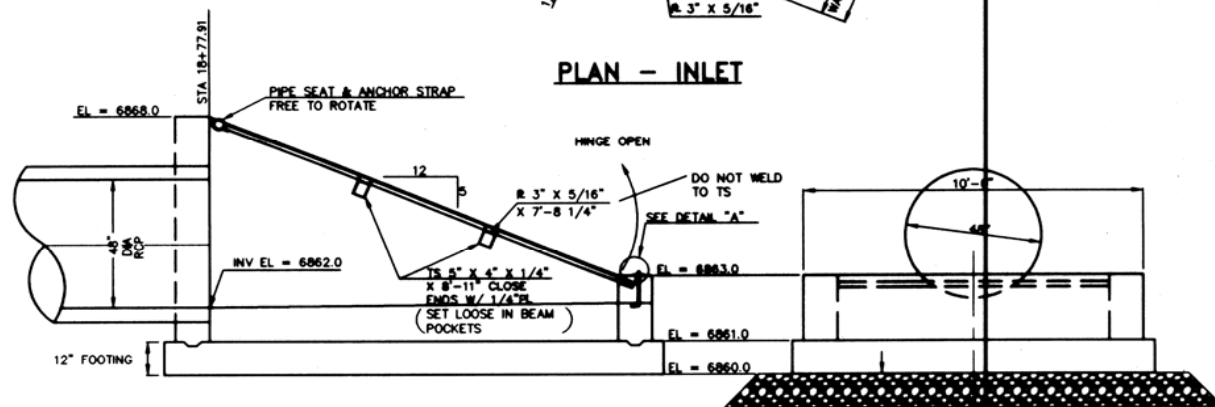
UNTIL SUCH TIME AS THESE DRAWINGS ARE APPROVED BY THE APPROPRIATE AGENCIES, J.R. ENGINEERING APPROVES THEIR USE ONLY FOR THE PURPOSES DESIGNATED BY WRITTEN AUTHORIZATION.	
PREPARED FOR LP47, LLC dba LA PLATA INVESTMENTS	2315 BRIARGATE PARKWAY, SUITE 100 COLORADO SPRINGS, COLORADO 80920 719-260-7477 FAX 719-260-7088
J.R. ENGINEERING A Subsidiary of Westair	430 Arrow/West Drive • Colorado Springs, CO 80907 719-593-2553 • Fax 719-528-6616 www.jrengineering.com
BY	DATE
NO.	REVISION
H-SCALE	V-SCALE
DATE	DESIGNED BY
DRAWN BY	CHECKED BY
PINE CREEK DETENTION FACILITY 'C'	
WETLAND GRADING AND PLANTING PLAN	
JOB NO.	28716.20
SHEET	1 OF 1



PLAN & BARGRATE ASSEMBLY



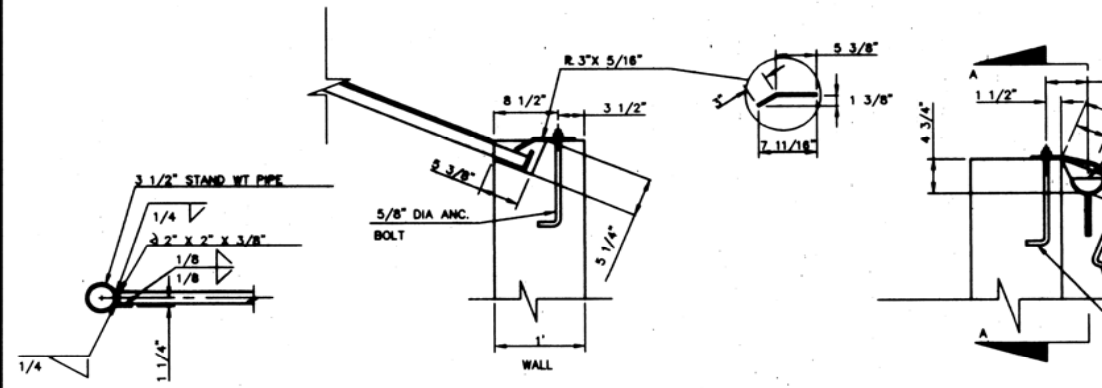
PLAN - INLET



SECTION E-E

12" MINIMUM DEPTH OF COARSE AGGREGATE. SEE CTL/THOMPSON GEOTECHNICAL REPORT NO. CS-11, 846

ELEVATION

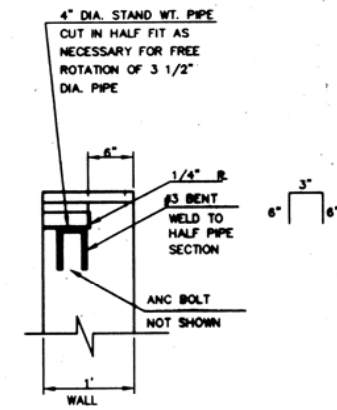


DETAIL "C"

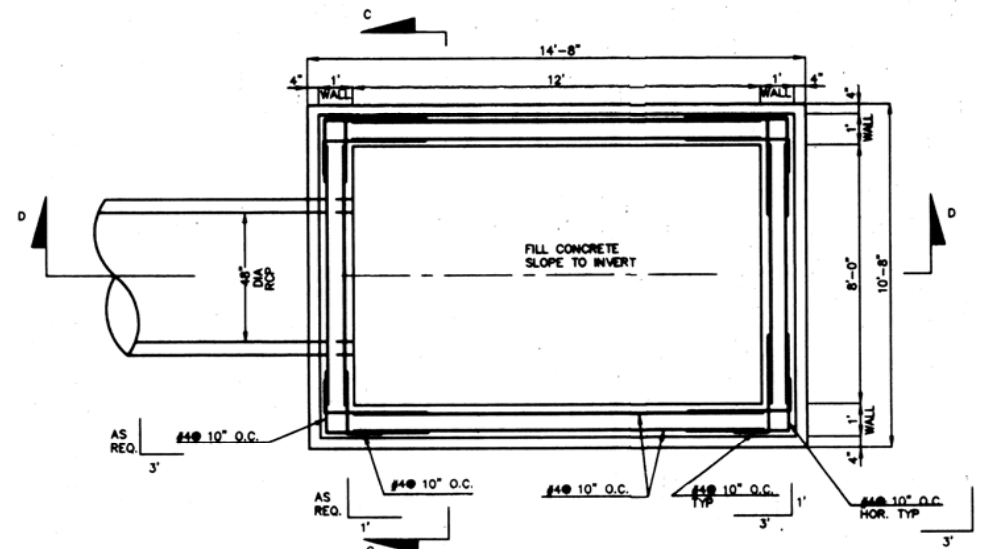
DETAIL "A"

DETAIL "B"

SCALE 1"=1'



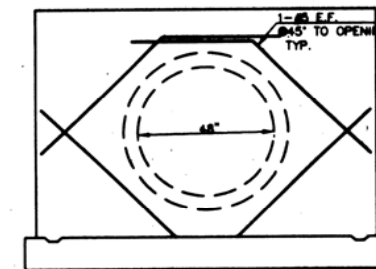
SECTION A-A



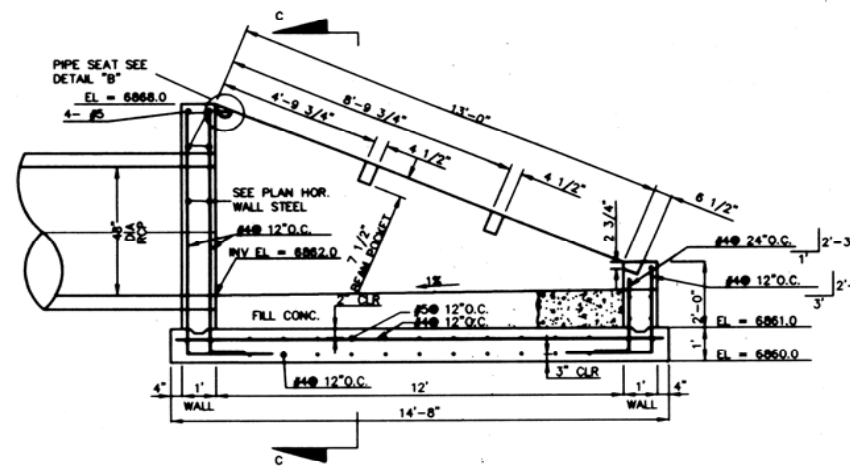
PLAN - HORIZONTAL WALL REINFORCING STEEL

STEEL FABRICATION NOTES:

1. FABRICATED STEEL STRUCTURES SHALL BE CONSTRUCTED IN ACCORDANCE WITH AISC AND AWS SPECIFICATIONS.
2. THE OUTLET STRUCTURE BARGRATE IS DESIGNED FOR A VERTICAL LOAD OF 300 LBS./SQ. FT.
3. ALL STRUCTURAL STEEL SHAPES TO INCLUDE: ANGLE, PLATE, AND BAR SHALL MEET ASTM A36 SPECIFICATIONS, FY= 36 KSI MINIMUM. STRUCTURAL TUBING SHALL MEET ASTM A500 GRADE B SPECIFICATIONS, FY= 46 KSI MINIMUM. STEEL PIPE SHALL BE STANDARD WEIGHT PIPE ASTM A53 GRADE B, FY= 35 KSI MINIMUM.
4. WELDS NOT INDICATED SHALL BE 1/8" MINIMUM FILLET OR GROOVE, CONTINUOUS SO FAR AS POSSIBLE. CONSIDER VANDALISM LOADS, WELD ACCORDINGLY AT CRITICAL LOCATIONS.
5. PRIOR TO PAINTING REMOVE ALL OIL, SCALE, AND SLAG, GRIND OFF BURRS AND SHARP EDGES.
6. PAINT WITH ONE SHOP COAT OF ZINC RICH PRIMER AND TWO COATS OF ALUMINUM PAINT, AASHTO M-69.



ELEVATION - ADDITIONAL REINF. AT PIPE PENETRATION

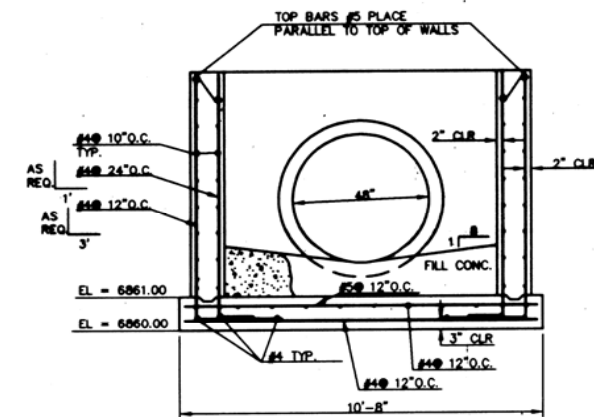


SECTION D-D

(GRATE & GRATE SUPPORTS NOT SHOWN)

SCALE 3/8" = 1'

SEE CONCRETE SPECIFICATIONS SHEET 10 OF 15



SECTION C-C

PREPARED UNDER MY DIRECT SUPERVISION FOR AND ON BEHALF OF J.R. ENGINEERING

Prepared by: *[Signature]*
 DATE: 11-20-01
 VANCE E. FORBES, COLORADO P.E. 39192

UNTIL SUCH TIME AS THESE DRAWINGS ARE APPROVED BY THE APPROPRIATE REVIEWING AGENCIES, THESE DRAWINGS ARE NOT TO BE USED FOR THE PURPOSES DESIGNATED BY WRITTEN AUTHORIZATION.

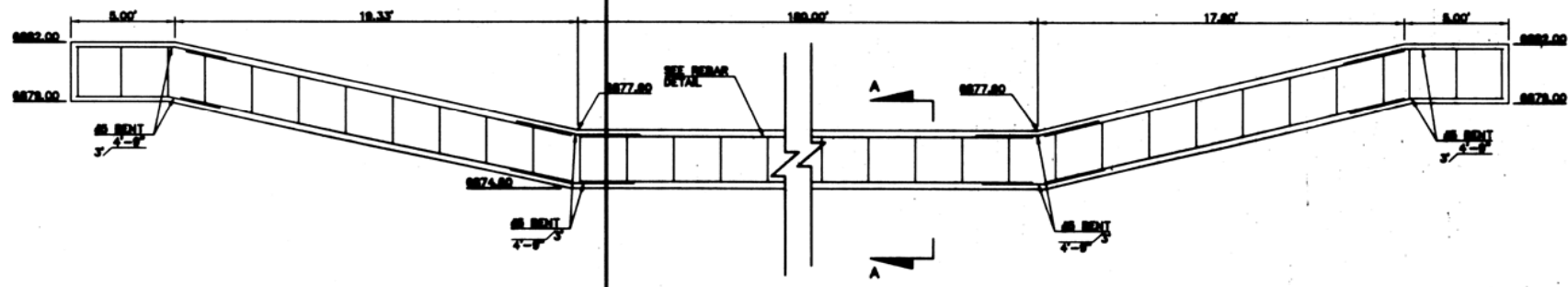
PREPARED FOR
LA PLATA INVESTMENTS
 2315 Briargate Pkwy, Suite 100
 Colorado Springs, CO 80920
 Phone: (719) 260-7477
 Fax: (719) 260-7088

J.R. ENGINEERING
 A Subsidiary of Heaton
 438 Anschutz Drive • Colorado Springs, CO 80907
 719-589-2588 • Fax: 719-528-6868
 www.jrengineering.com

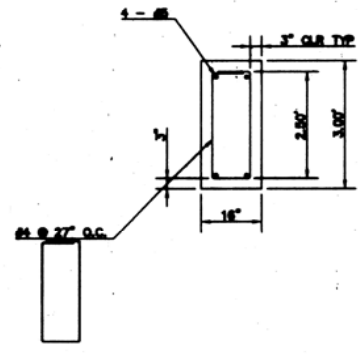
NO.	REVISION	BY	DATE

BRIARGATE PARKWAY STORM DRAIN
 DETENTION FACILITY "C"
 OUTLET STRUCTURE DETAILS

SHEET 7 OF 19
 JOB NO. 28715.33

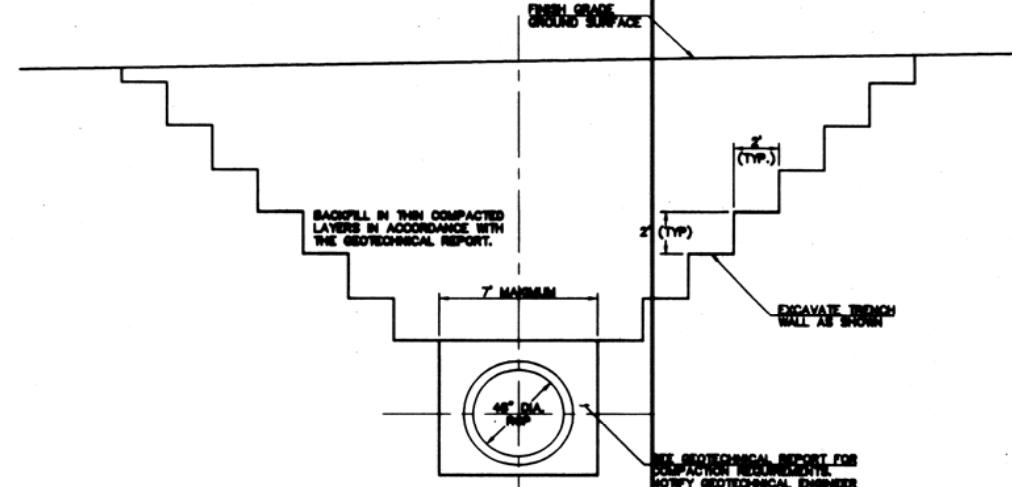


**REINFORCED CONCRETE CUTOFF WALL
FOR DETENTION FACILITY "C"
EMERGENCY SPILLWAY**
SCALE: 1" = 4'

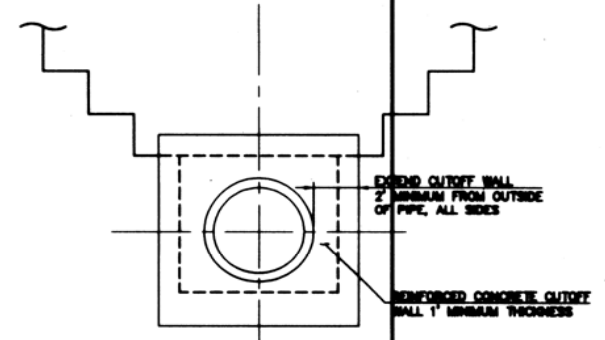


**SECTION A-A
REBAR DETAIL**
SCALE: 1" = 2'

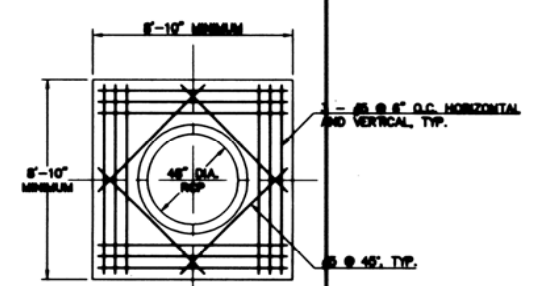
REFER TO CONCRETE AND
REINFORCEMENT SPECIFICATIONS
SEE SHEET 18 OF 18



**TYPICAL TRENCH SECTION
DETENTION FACILITY "C" OUTLET PIPE**
SCALE: 1" = 4'



TYPICAL TRENCH SECTION ANTI-SEEP COLLAR/CUTOFF WALL
SCALE: 1" = 4'



**ELEVATION-CONCRETE
CUTOFF WALL REINFORCING**
SCALE: 1" = 4'

PREPARED UNDER MY DIRECT SUPERVISION FOR AND ON BEHALF
OF J.R. ENGINEERING
James J. ... 11-20-01
VANCE & FOSBERG, COLORADO P.E. 04872 DATE

UNTIL SUCH TIME AS THESE DRAWINGS ARE APPROVED BY THE APPROPRIATE REVIEWING AGENCIES, THEY ARE TO BE USED ONLY FOR THE PURPOSES DESIGNATED BY THE WRITTEN AUTHORIZATION.	
PREPARED FOR	LA PLATA INVESTMENTS 2315 Briargate Pkwy, Suite 100 Colorado Springs, CO 80920 Phone: (719) 260-7477 Fax: (719) 260-7088
J.R. ENGINEERING A subsidiary of Vantage	438 Arapahoe Drive • Colorado Springs, CO 80907 719-582-2888 • Fax 719-589-8900 www.jrengineering.com
BY	DATE
REVISION	
NO.	
H-SCALE	VARIES
V-SCALE	VARIES
DATE	04/26/01
DESIGNED BY	JRB
DRAWN BY	SRT/ELY
CHECKED BY	JTR/B
BRIARGATE PARKWAY STORM DRAIN	
REINFORCED CONCRETE CUTOFF WALL	
DETENTION FACILITY "C" EMERGENCY SPILLWAY	
INCLUDING ANTI-SEEP COLLAR DETAILS	
SHEET 8	OF 19
PROJECT NO.	28715.33

X:\2870000_0111-08\Drawings\Construction\01110808.dwg Mon Mar 12 13:47:14 2001 eth
0111-08
Sheet 8 of 19

0111-08-8