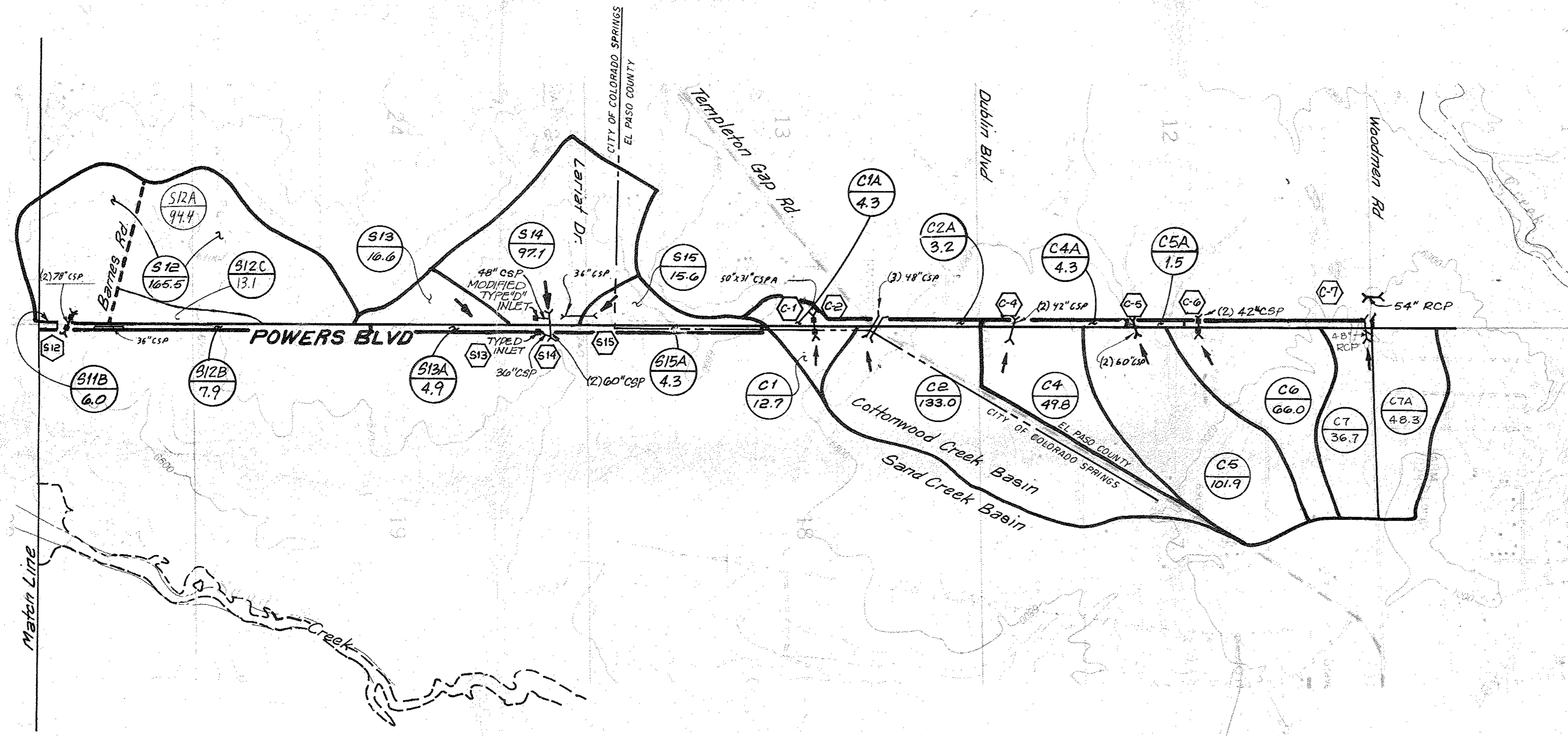


HYDROLOGIC SUMMARY

SUBBASIN	AREA (ACRES)	CURVE NUMBER (CN)	Q ₁₀₀ (CFS)	Q ₅ (CFS)
S11	4.3	.77	32.7	17.4
S12	2.2	.84	16.1	8.3
S1	15.0	.91	62.2	32.8
S1A	5.5	.83	41.5	18.6
S2	28.9	.91	119.5	62.7
S2A	5.0	.87	39.2	17.8
M1	0.8	.90	8.0	3.6
M2	0.8	.90	8.4	3.8
S3	19.3	.92	95.1	50.8
S3A	2.6	.85	25.1	11.4
S3B	2.6	.86	25.2	11.4
S4	14.2	.92	71.4	38.1
S4A	3.1	.89	27.2	12.3
S6	38.0	.91	132.0	69.1
S6A	35.8	.91	139.4	72.8
S6B	23.9	.92	124.3	66.4
S7	5.7	.79	30.8	16.4
S7A	41.9	.92	138.3	74.3
S8	31.3	.92	144.5	77.6
S8A	60.6	.91	204.7	89.9
S8B	23.9	.91	434.4	198.9
S9	164.9	.90	462.2	248.8
S9A	5.6	.84	46.2	26.8
S11	64.2	.81	205.6	90.7
S11A	27.6	.78	92.3	38.4
S11B	6.0	.85	45.7	28.3
S12	165.5	.80	486.1	280.9
S12A	94.4	.70	264.0	109.9
S12B	7.9	.82	60.4	27.4
S12C	12.1	.77	39.4	16.8
S13	16.6	.85	66.0	29.2
S13A	4.9	.84	41.0	18.7
S14	97.1	.85	362.3	171.4
S15	15.6	.84	56.1	26.2
S15A	4.3	.83	37.0	16.7
C1	12.7	.77	41.9	17.0
C1A	4.3	.79	38.1	17.3
C2	133.0	.73	284.0	97.3
C2A	3.2	.84	27.2	12.3
C4	49.8	.74	122.0	46.4
C4A	4.3	.84	33.3	14.9
C5	101.9	.74	258.9	98.6
C5A	1.5	.83	14.0	6.3
C6	66.0	.74	157.9	60.1
C7	36.7	.81	126.8	55.6
C7A	48.3	.81	157.8	69.3

*Including overflow from S11 Q₁₀₀ = S11.4
 Basin S3 includes overflow from Basin S3A
 Basin S6A includes overflow from Basin S6B
 Basin S6 includes overflow from Basin S6A
 Basin S7 includes overflow from Basin S8
 Basin S7A includes overflow from Basin S7



LEGEND

- Basin Boundary
- Basin Designation
- Basin Area (in Acres)
- Design Point
- Direction of flow
- Culvert
- Type "C" or "D" Inlets
- 100 YR FLOOD LIMITS

no.	description of revisions	date	name
1	REVISION	11-14-86	
2	REVISION	4-17-87	

date: 6-16-86
 job number: 8895.02.0007
 design by: L.B.D.
 drawn by: J.D.S.
 checked by: