

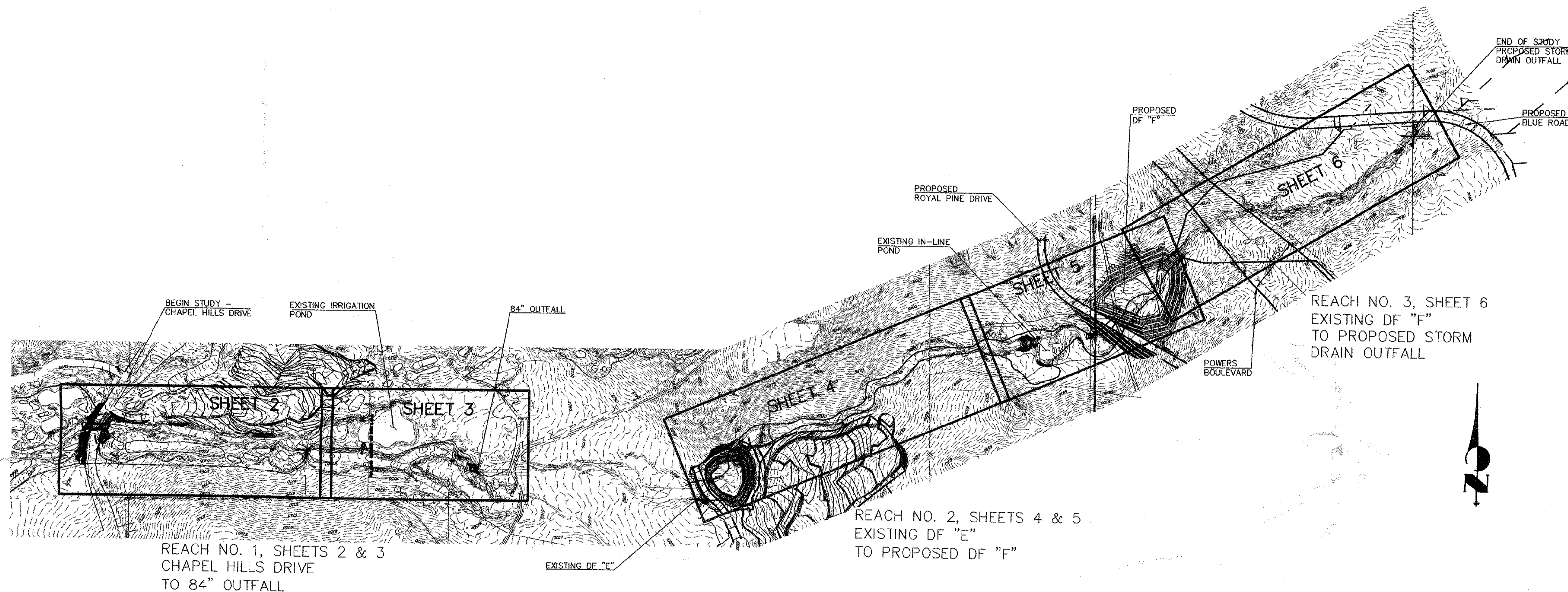
UPPER PINE CREEK CHANNEL ANALYSIS

CITY OF COLORADO SPRINGS, COUNTY OF EL PASO, STATE OF COLORADO

PINE CREEK FROM CHAPEL HILLS DRIVE TO A POINT

1800' +/- EAST OF PROPOSED POWERS BOULEVARD CENTER LINE, IN PINE CREEK NORTH BRANCH CHANNEL

MARCH 2003



INDEX MAP, REACH NOS. 1, 2 AND 3
SCALE 1"=500'

NOTE:

THESE PLANS ARE PART OF THE UPPER PINE CREEK CHANNEL ANALYSIS. THEY ARE INTENDED TO SHOW CONCEPTS AND APPROXIMATE LOCATIONS OF PROPOSED IMPROVEMENTS ONLY. THEY ARE NOT INTENDED FOR CONSTRUCTION.

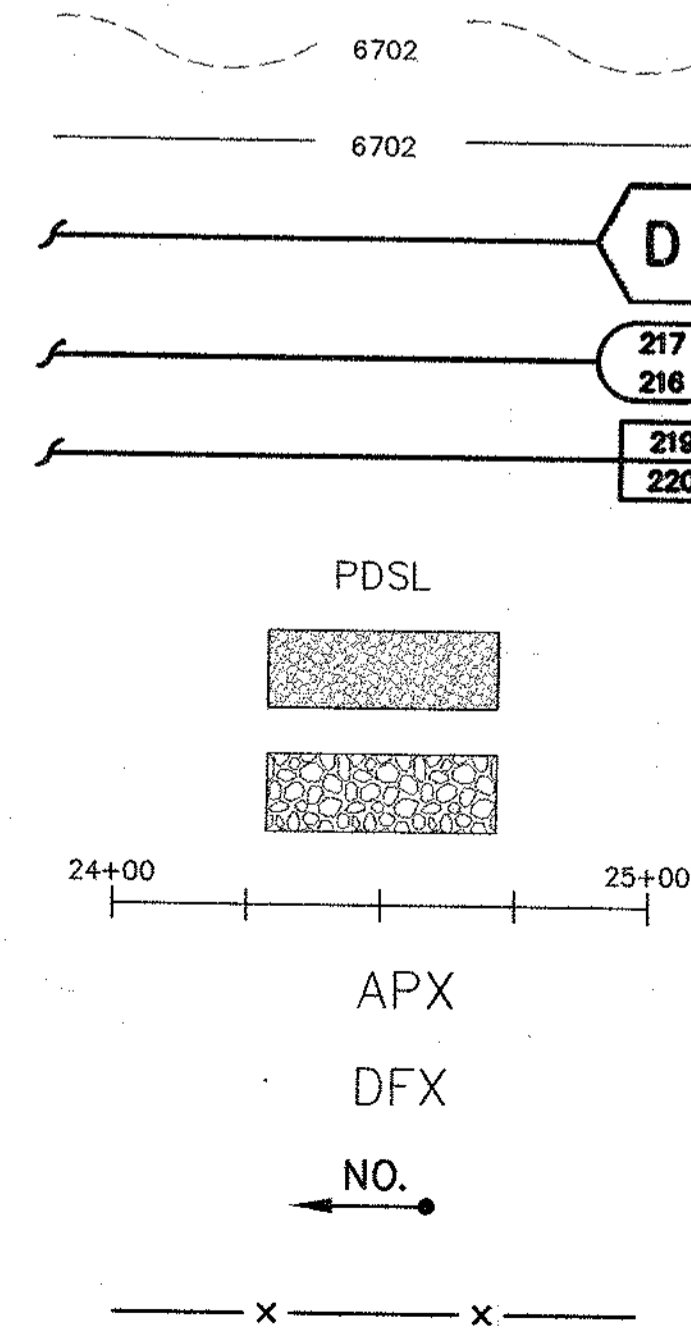
THESE PLANS ARE NOT COMPLETE WITHOUT THE UPPER PINE CREEK ANALYSIS.

SHEET INDEX

COVER SHEET	SHEET 1 OF 11
REACH NO. 1 CHAPEL HILLS DRIVE TO 84" RCP STORM SEWER STA. 0+00 TO STA. 25+00	SHEET 2 OF 11
REACH NO. 1 CHAPEL HILLS DRIVE TO 84" RCP STORM SEWER STA. 25+00 TO STA. 38+50	SHEET 3 OF 11
REACH NO. 2 EXIST. DETENTION FACILITY "E" TO PROPOSED DETENTION FACILITY "F" STA. 0+00 TO STA. 27+00	SHEET 4 OF 11
REACH NO. 2 EXIST. DETENTION FACILITY "E" TO PROPOSED DETENTION FACILITY "F" STA. 27+00 TO STA. 41+00	SHEET 5 OF 11
REACH NO. 3 PROPOSED DETENTION FACILITY "F" TO PROPOSED STORM DRAIN OUTFALL STA. 0+00 TO STA. 28+00	SHEET 6 OF 11
CONCEPTUAL CHECK STRUCTURE DETAIL SHEET	SHEET 7 OF 11
CHANNEL PHOTOGRAPHS PHOTOS 1 THROUGH 16 PHOTOS 17 THROUGH 32 PHOTOS 33 THROUGH 48 PHOTOS 40 AND 50	SHEET 8 OF 11 SHEET 9 OF 11 SHEET 10 OF 11 SHEET 11 OF 11

LEGEND

- EXISTING CONTOURS
- PROPOSED CONTOURS
- FEMA SECTION I.D.
- HEC-RAS ANALYSIS SECTION
- HEC-RAS ANALYSIS SECTION FOR "WEIR"
MODEL - REACH NO. 2
- PROPOSED DROP STRUCTURE LOCATION
REACH NO. 2
- PROPOSED RIPRAP
- EXISTING RIPRAP
- CHANNEL CENTERLINE
- PINE CREEK D.B.P.S. ANALYSIS POINT
- STORMWATER DETENTION FACILITY
- PHOTO POINT



VEGETATION

UNTIL SUCH TIME AS THESE DRAWINGS ARE APPROVED BY THE APPROPRIATE REVIEWING AGENCIES, THESE DRAWINGS APPLY ONLY FOR THE PURPOSES DESIGNATED BY WRITTEN AUTHORIZATION.

PREPARED FOR
LP47, LLC dba LA PLATA INVESTMENTS
2315 BRIARGATE PARKWAY, SUITE 100
COLORADO SPRINGS, COLORADO 80920
719-260-7477 • FAX 719-260-7088

J.R. ENGINEERING
A Subsidiary of Westlan
4300 Arroyo West Drive • Colorado Springs, CO 80907
719-582-2532 • Fax 719-582-6603
www.jrengineering.com

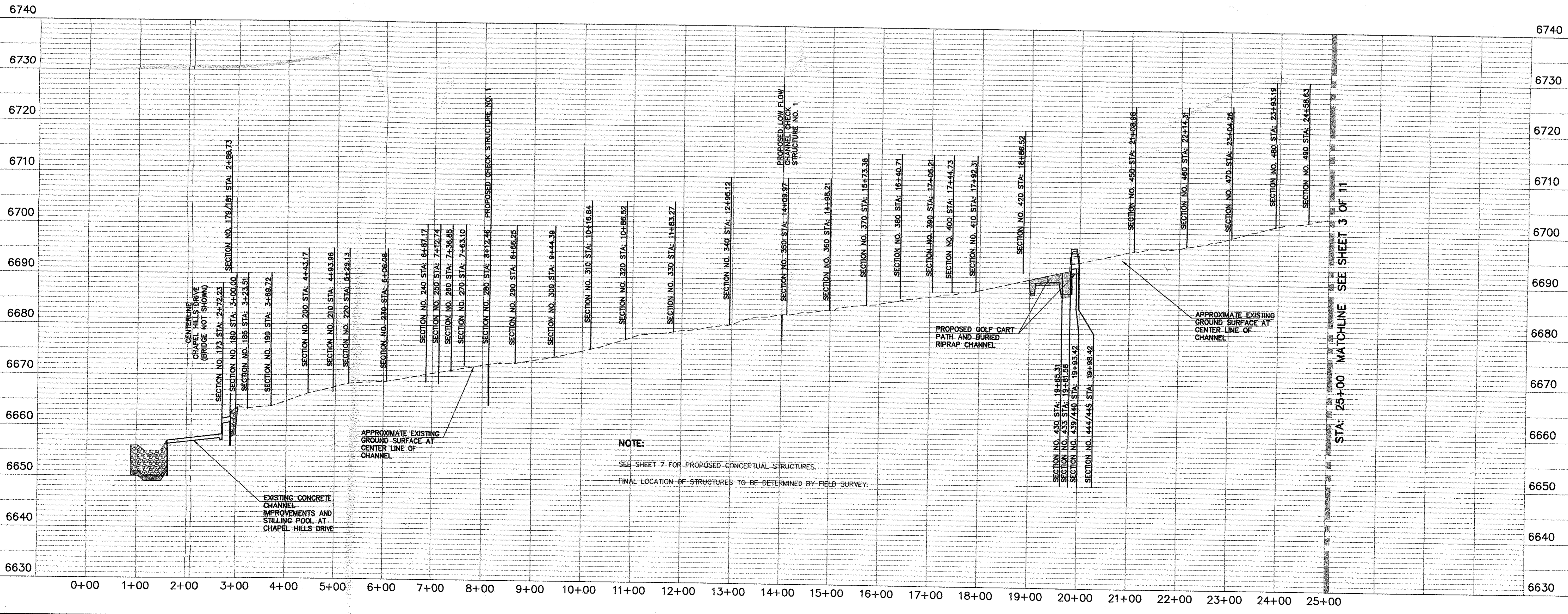
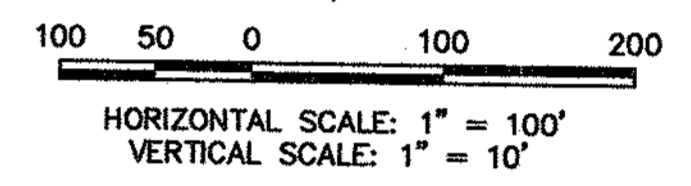
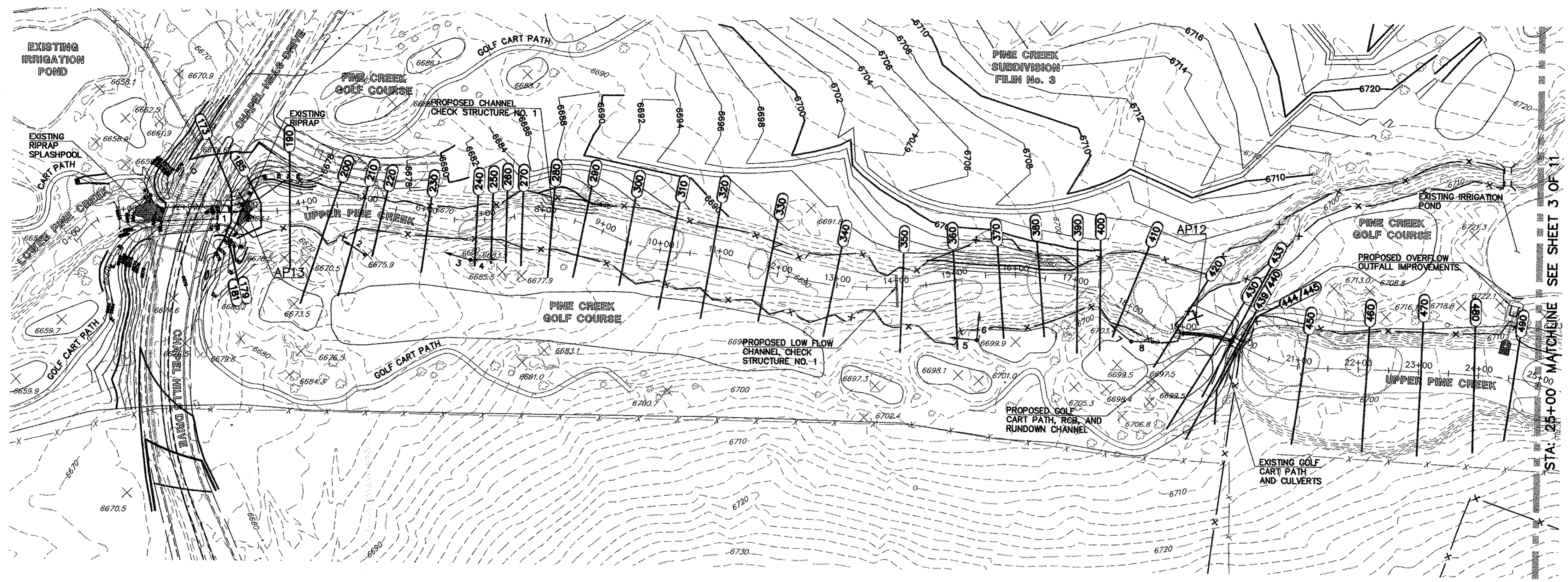


No.	REVISION	BY	DATE


H-SCALE	N/A	V-SCALE	N/A	DATE	03/18/03	DESIGNED BY	JRB	DRAWN BY	ELY	CHECKED BY	
---------	-----	---------	-----	------	----------	-------------	-----	----------	-----	------------	--

UPPER PINE CREEK CHANNEL ANALYSIS
CONCEPTUAL PLANS AND EXHIBITS
COVER SHEET

X:\2870000.a11\28717.45\Drawings\2002 Upper Pine Creek Analysis\28717.45\c01.dwg Mon Mar 24 11:38:21 2003



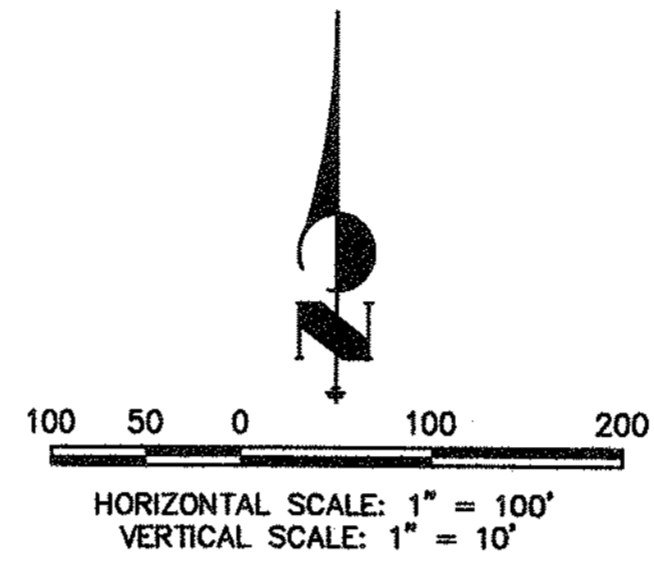
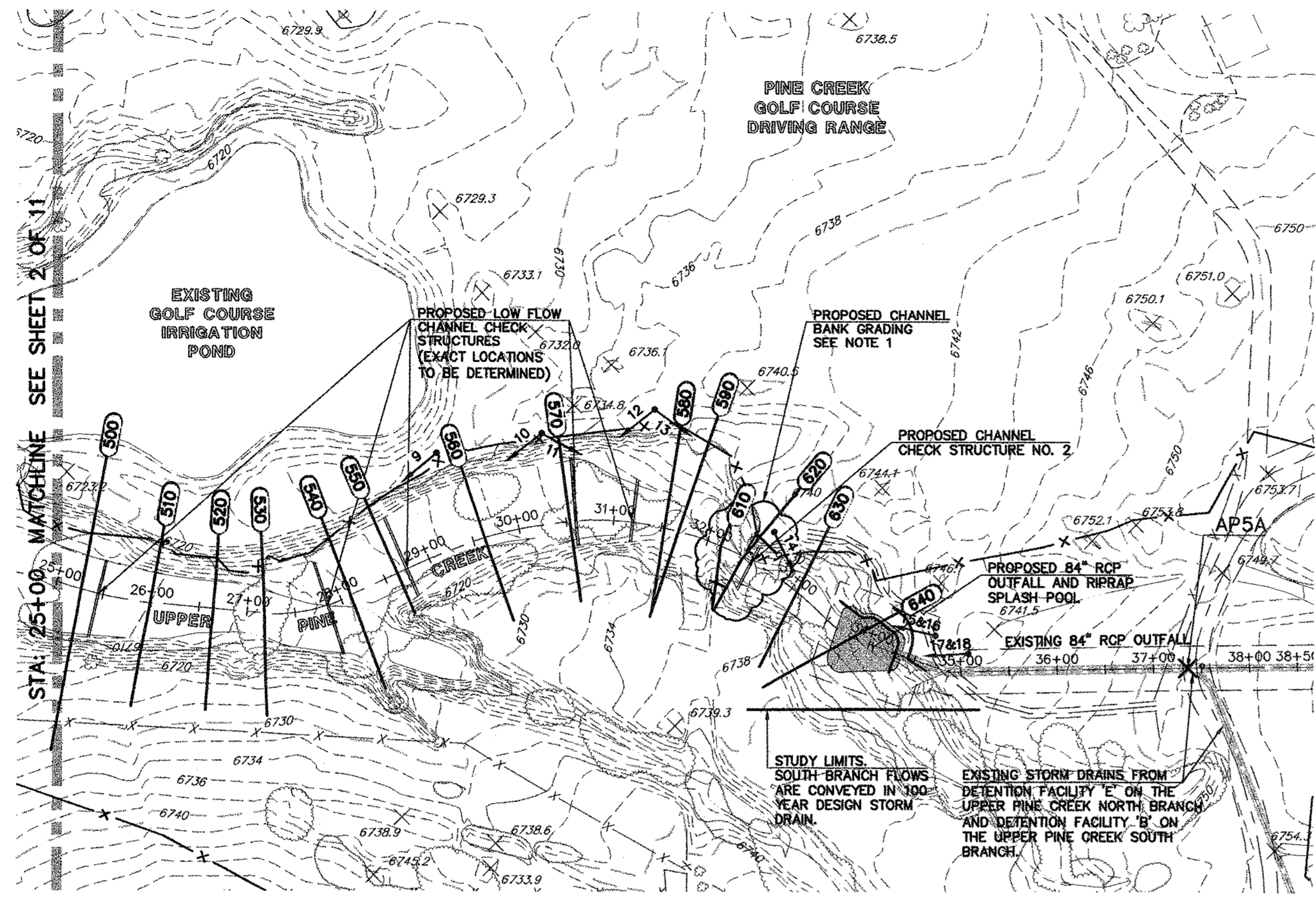
UPPER PINE CREEK CHANNEL ANALYSIS		REACH NO. 1	
FROM CHAPEL HILLS DRIVE TO 84" RCP STORM SEWER		STA: 0+00 TO STA: 25+00	
H-SCALE	1"=100'	No.	REVISION
V-SCALE	1"=10'	BY	DATE
DESIGNED BY	JRB		
DRAWN BY	ELY		
CHECKED BY			


J.R. ENGINEERING
 A Subsidiary of Westcon
 4800 Arrowhead Drive • Colorado Springs, CO 80907
 719-588-2839 • Fax: 719-528-6613
 www.jrengineering.com

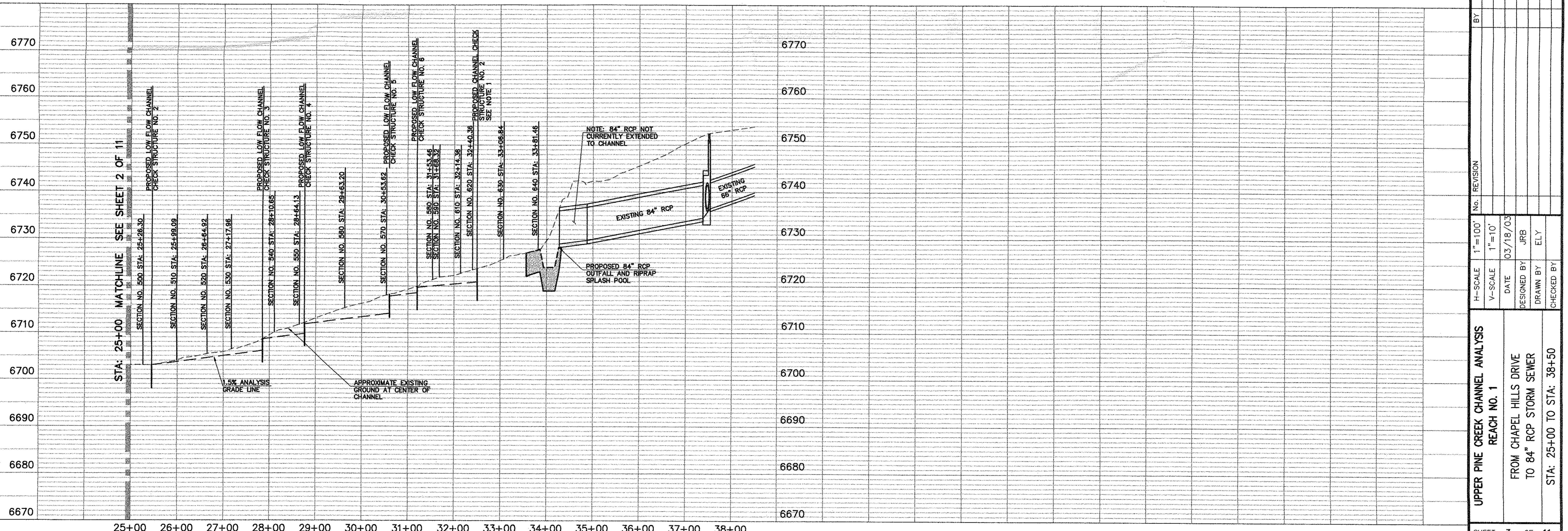
PREPARED FOR
LP47, LLC dba LA PLATA INVESTMENTS
 2315 BRIARGATE PARKWAY, SUITE 100
 COLORADO SPRINGS, COLORADO 80920
 719-260-7477 • FAX 719-260-7088

UNTIL SUCH TIME AS THESE DRAWINGS ARE APPROVED BY THE AGENCIES, J.R. ENGINEERING AND/OR THE USER, THESE DRAWINGS ARE NOT TO BE USED FOR ANY PURPOSES DESIGNATED BY WRITTEN AUTHORIZATION.

X:\2877000_01\12871745\Drawings\2002 Upper Pine Creek_Analysis\28771745.dwg Mon Mar 24 11:38:57 2003

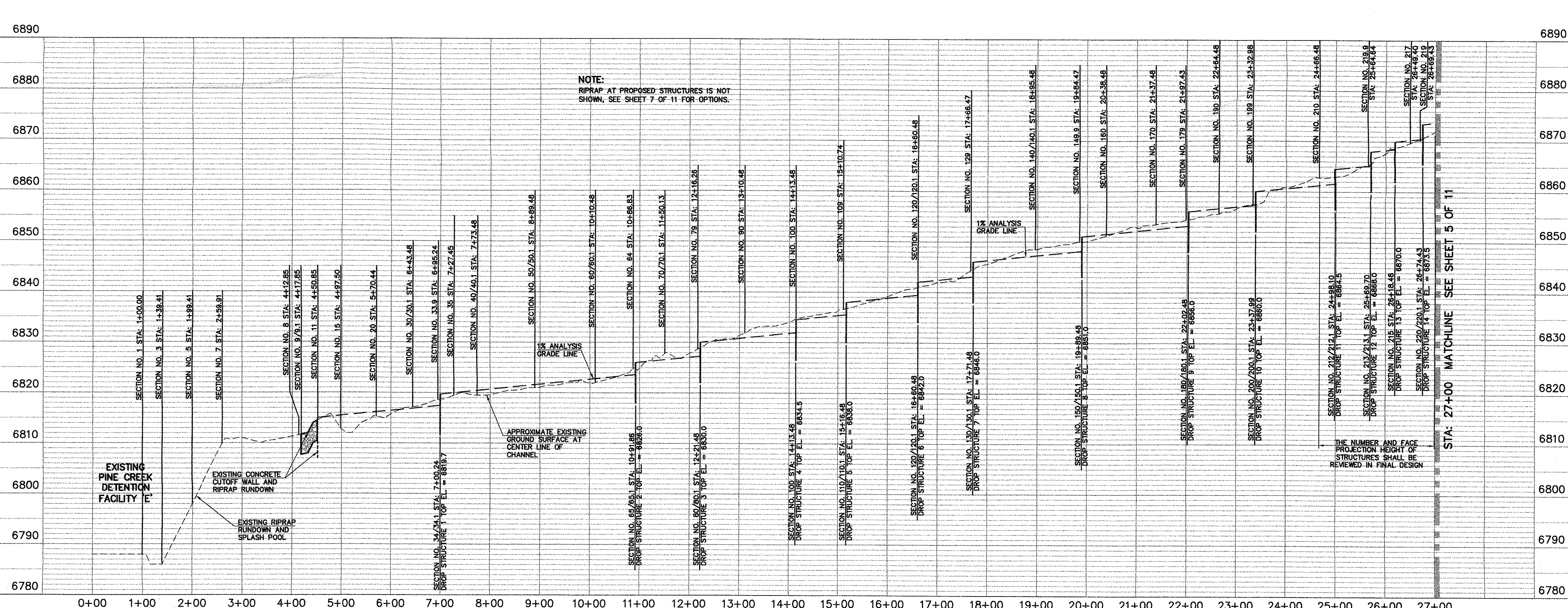
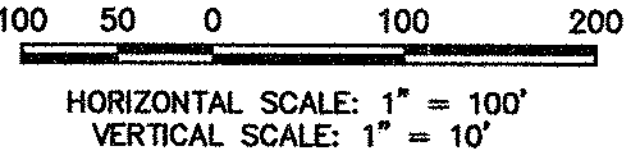
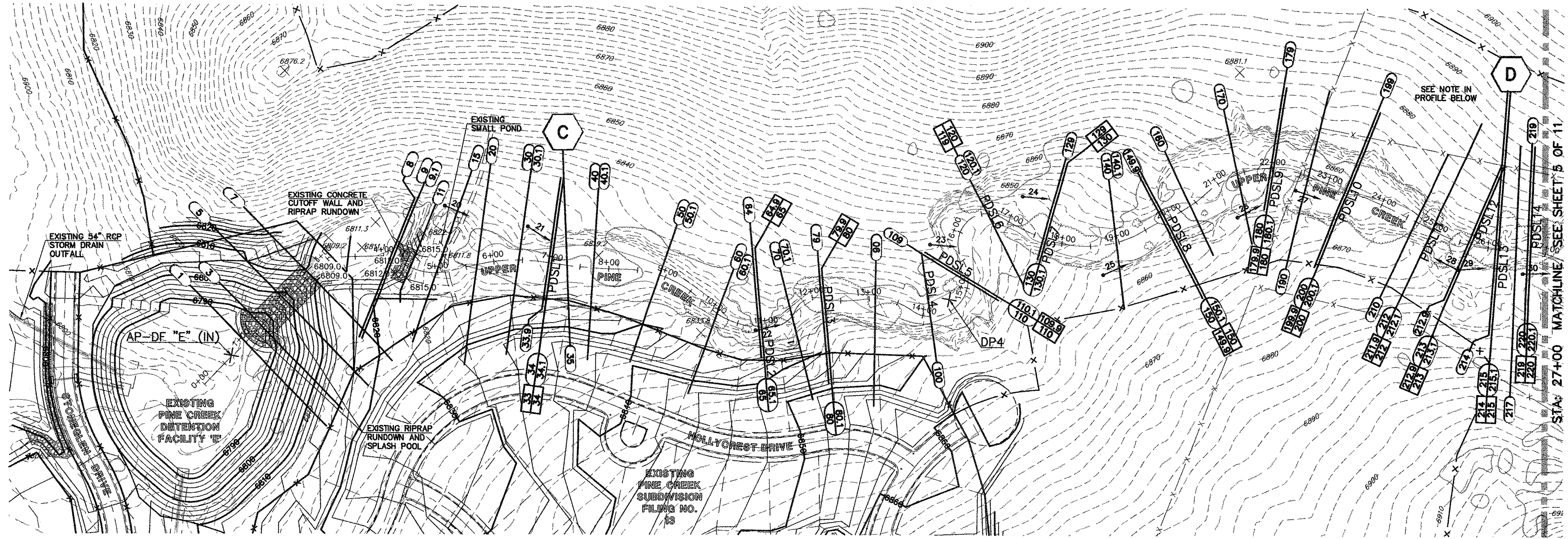


- NOTES:**
1. THE LOCATION OF PROPOSED CHECK STRUCTURE NO. 2 AND THE PROPOSED BANK GRADING SHALL BE REVIEWED DURING FINAL DESIGN WITH EMPHASIS ON MINIMIZING THE AREA OF DISTURBANCE.



<p>UNTIL SUCH TIME AS THESE DRAWINGS ARE APPROVED BY THE APPROPRIATE REVIEWING AGENCIES, J.R. ENGINEERING SHALL BE RESPONSIBLE ONLY FOR THE PURPOSES DESIGNATED BY WRITTEN AUTHORIZATION.</p>	
<p>PREPARED FOR LP47, LLC dba LA PLATA INVESTMENTS 2315 BRARGATE PARKWAY, SUITE 100 COLORADO SPRINGS, COLORADO 80920 719-260-7477 • FAX 719-260-7088</p>	
<p>J.R. ENGINEERING A Subsidiary of Westair 420 Arrowhead Drive • Colorado Springs, CO 80907 719-583-2583 • Fax 719-528-6683 www.jrengineering.com</p>	
BY	DATE
H-SCALE	1" = 100'
V-SCALE	1" = 10'
DATE	03/18/03
DESIGNED BY	JRB
DRAWN BY	ELY
CHECKED BY	
<p>UPPER PINE CREEK CHANNEL ANALYSIS REACH NO. 1 FROM CHAPEL HILLS DRIVE TO 84" RCP STORM SEWER STA: 25+00 TO STA: 38+50</p>	
SHEET	3 OF 11
JOB NO.	28717.45

x:\2870000_a11\28717.45\Drawings\28717.45ca03.dwg Tue Mar 25 12:06:35 2003



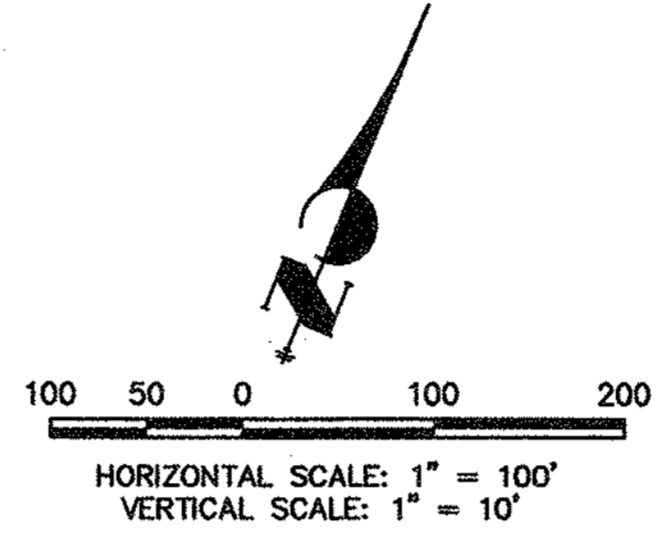
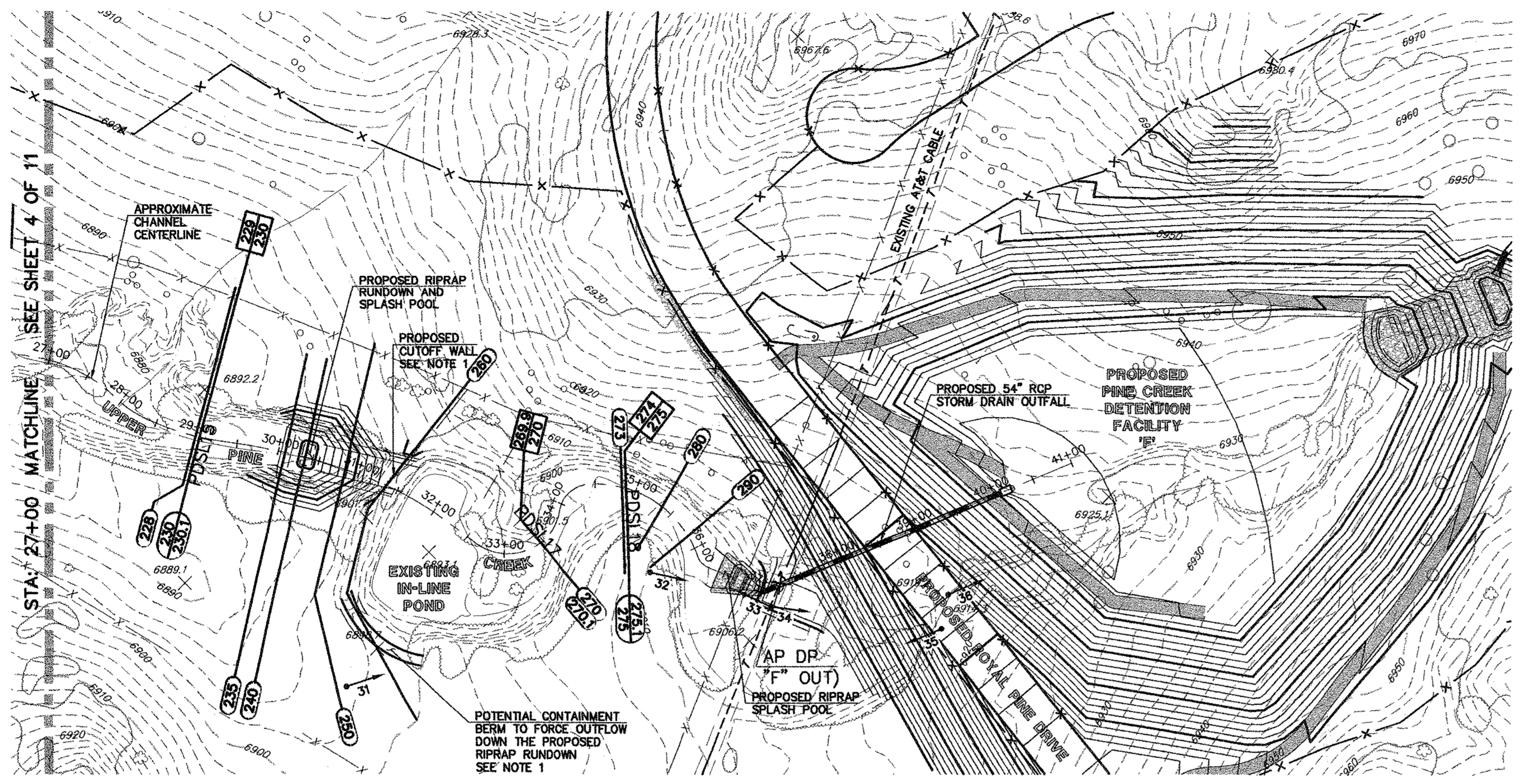
UPPER PINE CREEK CHANNEL ANALYSIS		REACH NO. 2	
FROM EXISTING DETENTION FACILITY 'E'		TO PROPOSED DETENTION FACILITY 'F'	
STA: 0+00 TO STA: 27+00			
NO.	REVISION	H-SCALE	1"=100'
		V-SCALE	1"=10'
DATE	03/18/03 <th>DESIGNED BY</th> <td>JRB</td>	DESIGNED BY	JRB
DRAWN BY	ELY	CHECKED BY	
BY		DATE	

PREPARED FOR
LP47, LLC dba LA PLATA INVESTMENTS
2315 BIRMGATE PARKWAY, SUITE 100
COLORADO SPRINGS, COLORADO 80920
719-260-7477 • FAX 719-260-7088
www.la-plata.com

J•R ENGINEERING
A Subsidiary of Hensert
430 ArrowsWest Drive • Colorado Springs, CO 80907
719-538-2583 • Fax 719-538-6818
www.jreng.com

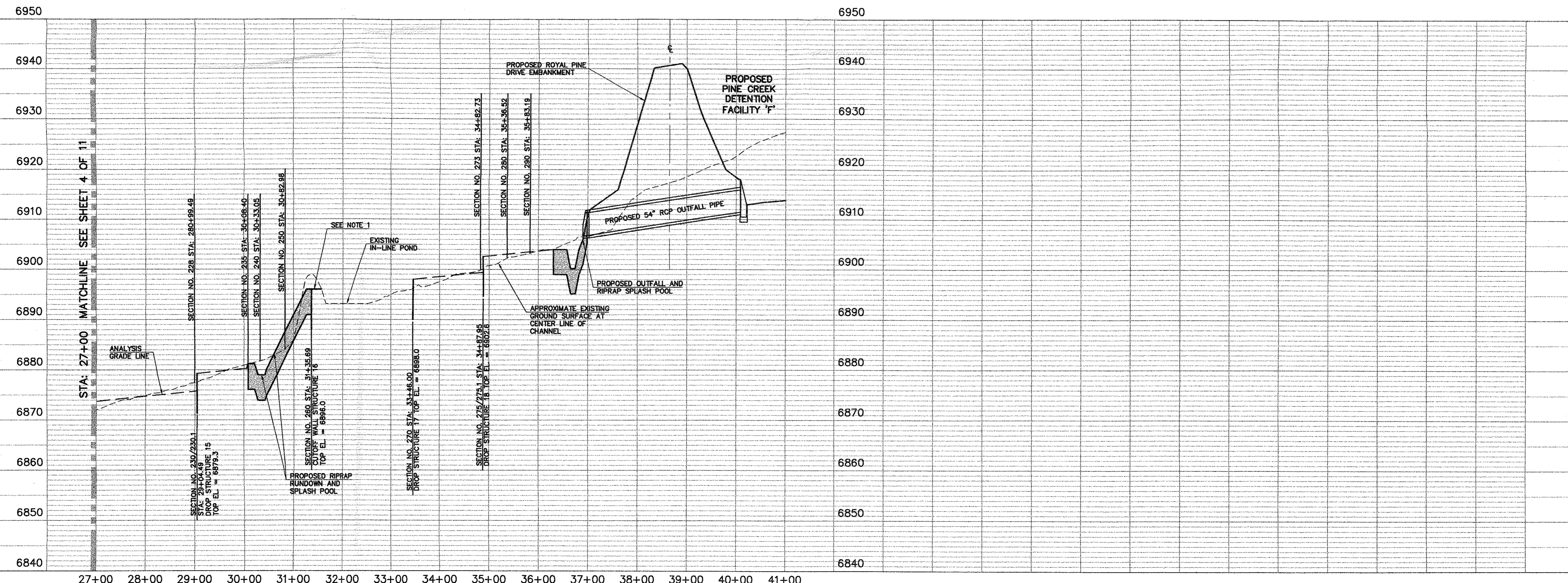
UNTIL SUCH TIME AS THESE DRAWINGS ARE APPROVED BY THE APPROPRIATE REVIEWING AGENCIES, J•R ENGINEERING ASSUMES NO LIABILITY ONLY FOR THE PURPOSES DESIGNATED BY WRITTEN AUTHORIZATION.

X:\28717.45\Drawings\28717.45.dwg Tue Mar 25 08:46:29 2003



NOTES:

1. IN FINAL DESIGN, THE SPILLWAY ELEVATION OF THE PROPOSED POND OUTFALL SHALL BE SET TO MAINTAIN THE HISTORIC POND W.S.E. BASED ON FIELD SURVEY AND HYDRAULIC ANALYSIS THE NEED FOR THE PROPOSED POTENTIAL CONTAINMENT BERM SHALL BE DETERMINED.



UPPER PINE CREEK CHANNEL ANALYSIS REACH NO. 2		H-SCALE 1"=100'		V-SCALE 1"=10'		DATE 03/18/03		DESIGNED BY JRB		DRAWN BY ELY		CHECKED BY	
FROM EXISTING DETENTION FACILITY 'E'	TO PROPOSED DETENTION FACILITY 'F'	STA: 27+00 TO STA: 41+00	NO.	REVISION	BY	DATE							
SHEET 5 OF 11		JOB NO. 28717.45											

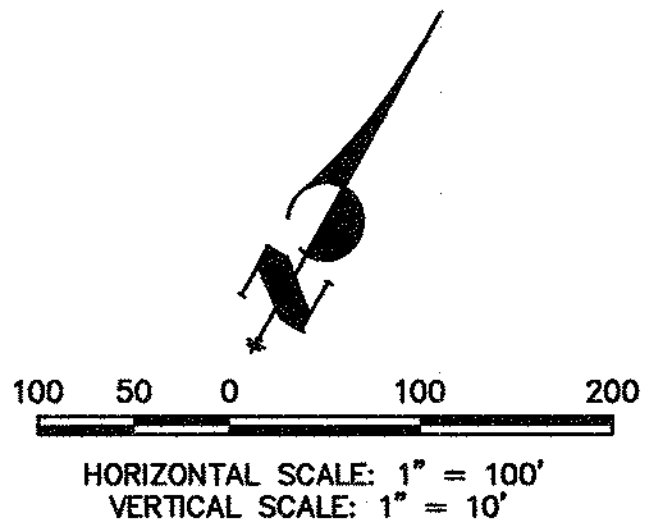
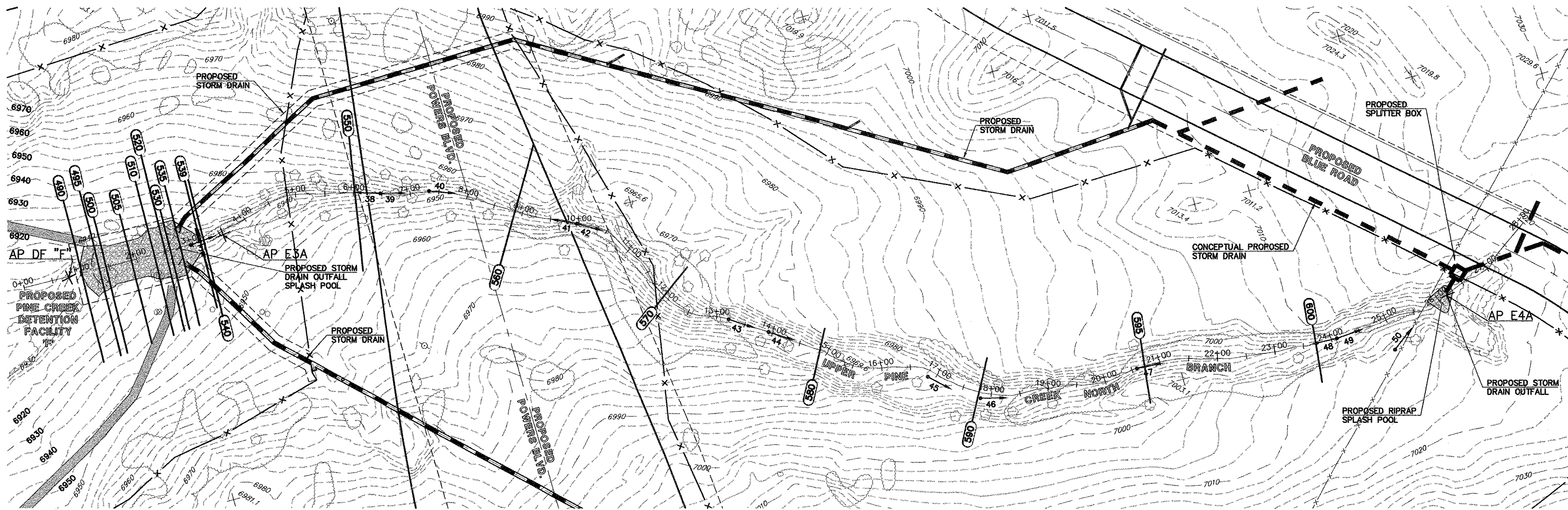
J.R. ENGINEERING
A Subsidiary of Westman
430 Arrowhead Drive • Colorado Springs, CO 80907
719-530-2593 • Fax: 719-530-6818
www.jrengineering.com

LP47, LLC dba LA PLATA INVESTMENTS
2315 BRIARGATE PARKWAY, SUITE 100
COLORADO SPRINGS, COLORADO 80920
719-260-7477 • FAX 719-260-7088

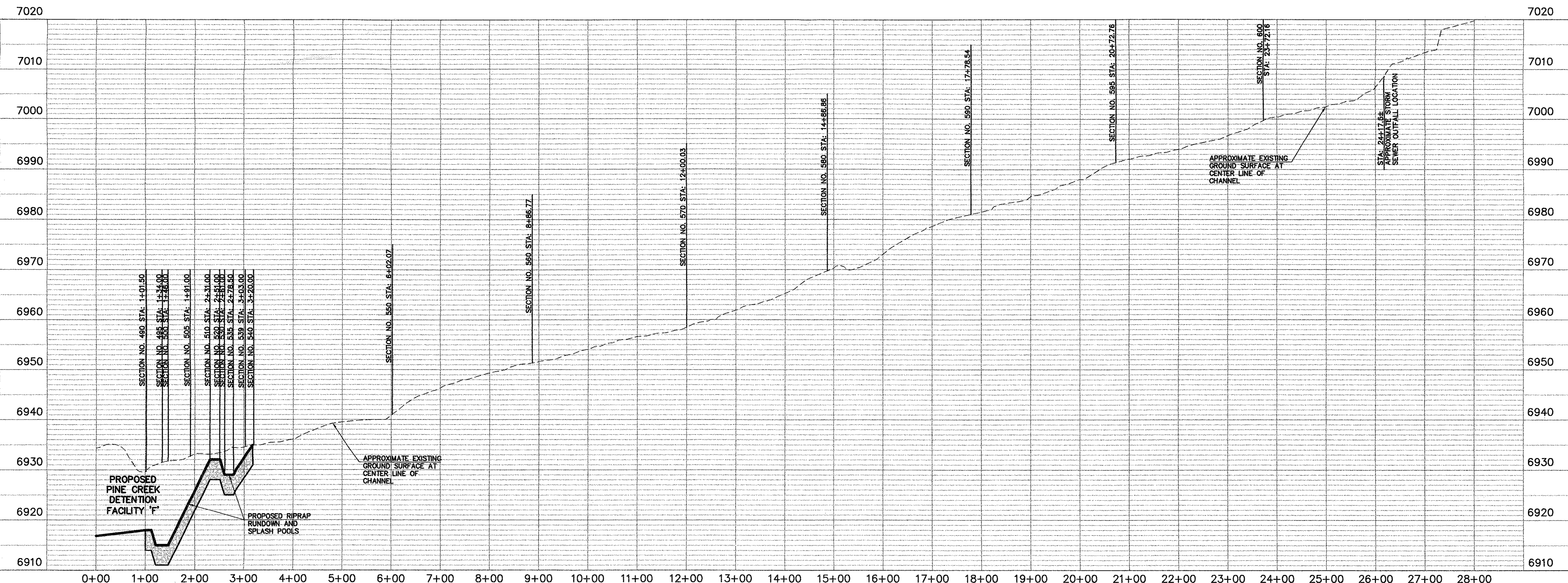
PREPARED FOR

UNTIL SUCH TIME AS THESE DRAWINGS ARE APPROVED BY THE APPROPRIATE JURISDICTIONAL AGENCIES, J.R. ENGINEERING APPROVES THEIR USE ONLY FOR THE PURPOSES DESIGNATED BY WRITTEN AUTHORIZATION.

X:\28717.45\Drawings\2002 Upper Pine Creek Analysis\28717.45c05.dwg Tue Mar 25 09:53:34 2003



PLAN REACH NO. 3

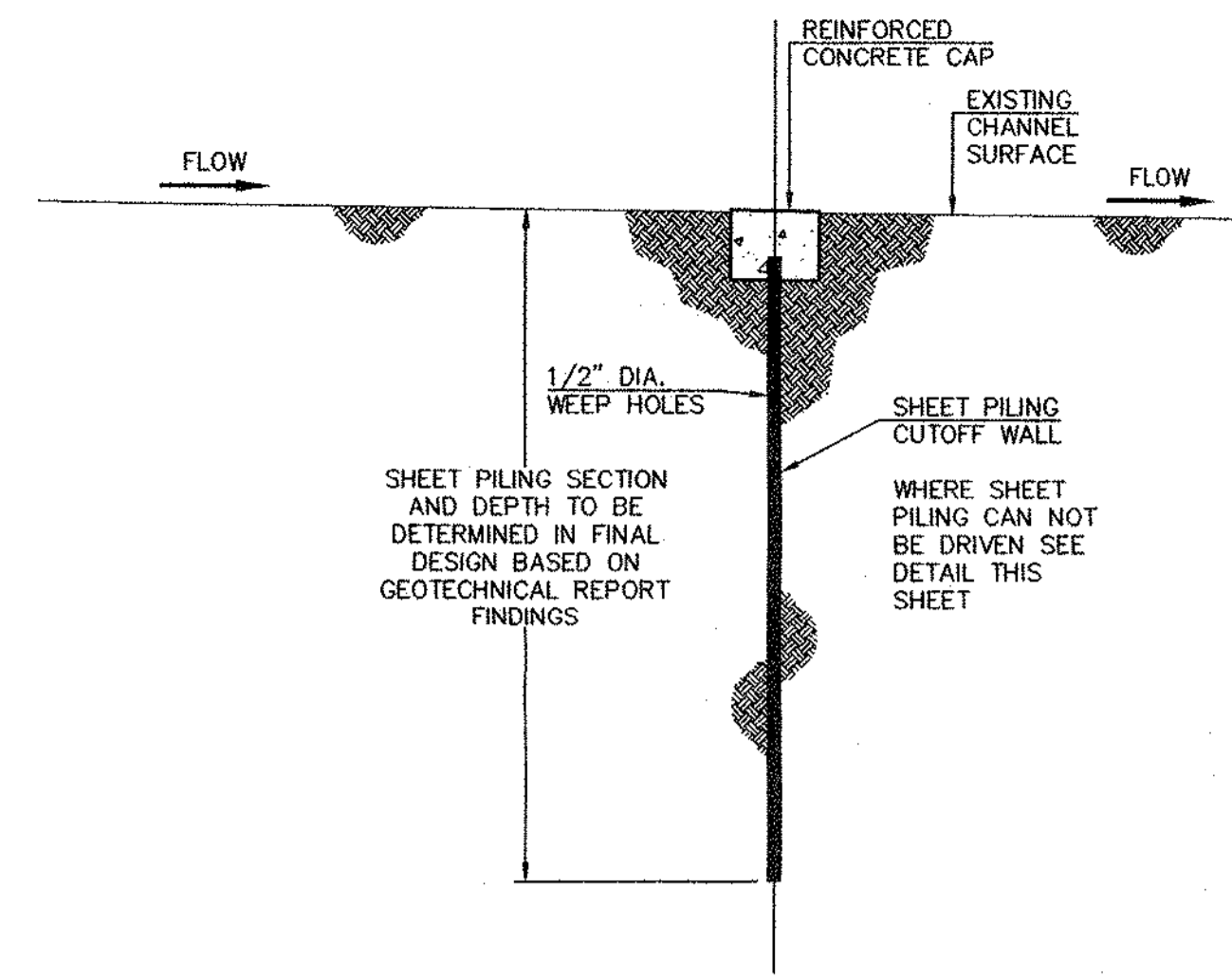


UPPER PINE CREEK CHANNEL ANALYSIS REACH NO. 3 FROM PROPOSED DETENTION FACILITY 'F' TO PROPOSED STORM DRAIN OUTFALL STA: 0+00 TO STA: 28+00		H-SCALE 1"=100'	V-SCALE 1"=10'	DATE 03/18/03	DESIGNED BY JRB	DRAWN BY ELY	CHECKED BY	No.	REVISION	BY	DATE
SHEET 6 OF 11											
JOB NO. 28717.45											

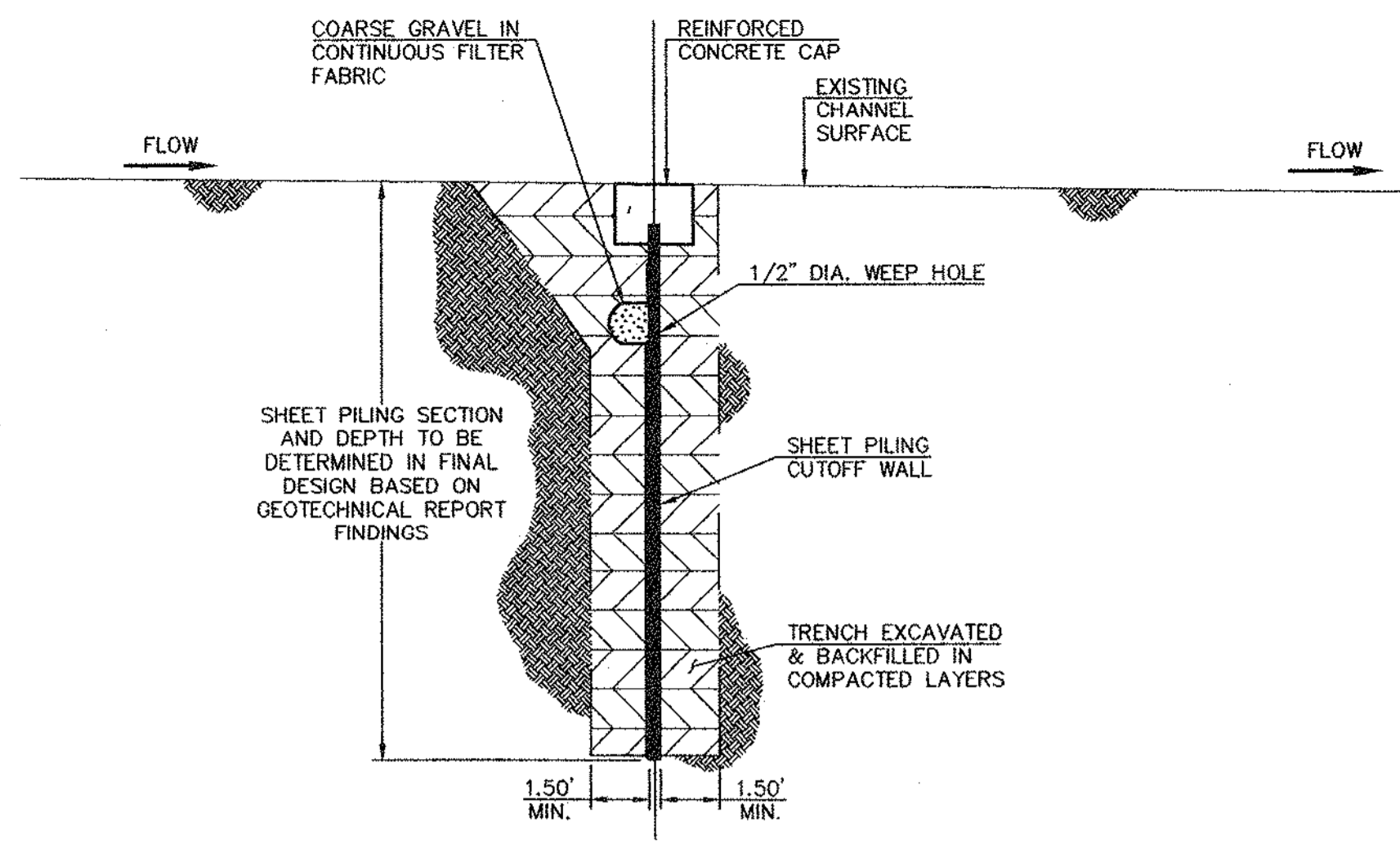
UNTIL SUCH TIME AS THESE DRAWINGS ARE APPROVED BY THE AGENCIES, J.R. ENGINEERING APPROVES THEIR USE ONLY FOR THE PURPOSES INDICATED BY WRITTEN AUTHORIZATION.

PREPARED FOR
LP47, LLC dba LA PLATA INVESTMENTS
2315 BRIGATE PARKWAY, SUITE 100
COLORADO SPRINGS, COLORADO 80920
719-280-7477 FAX 719-280-7088

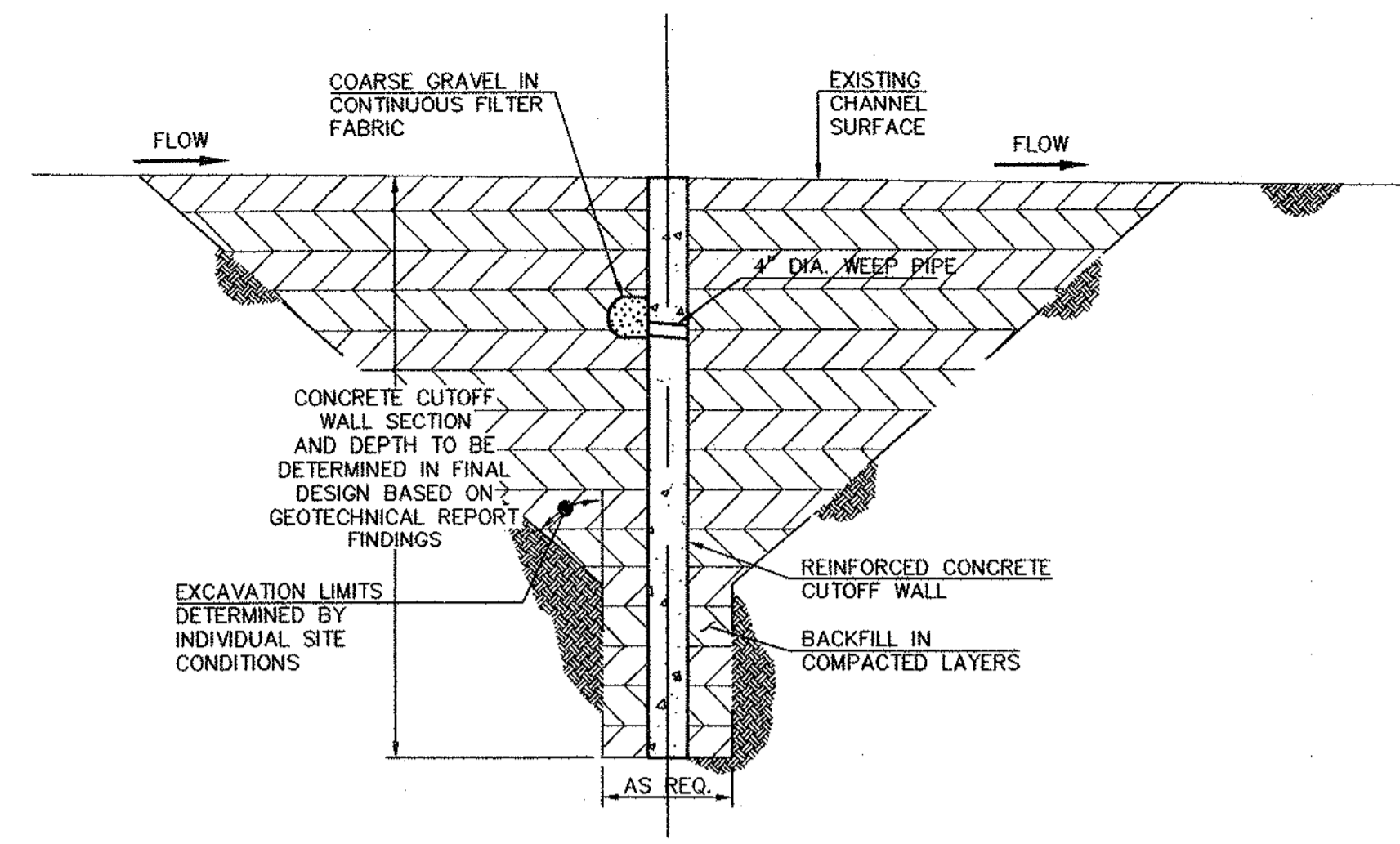
J.R. ENGINEERING
A Subsidiary of Westair
4370 Arroyo West Drive • Colorado Springs, CO 80907
719-593-2500 • Fax: 719-528-6663
www.jrengineering.com



SECTION SHEET PILING SET FLUSH WITH CHANNEL
SCALE: 1/4" = 1'-0"

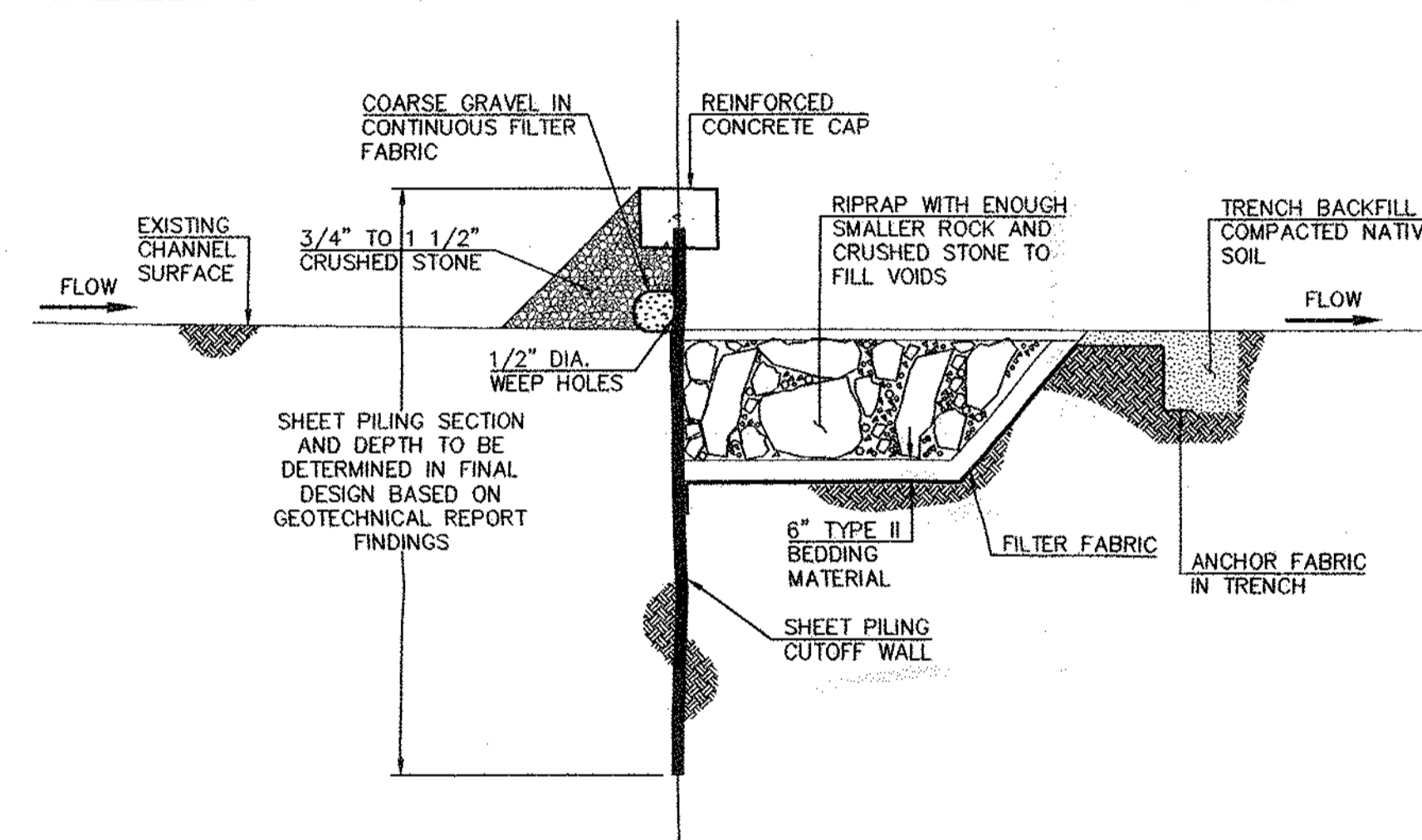


SECTION SHEET PILING DRIVEN IN PREPARED TRENCH WHERE EXISTING SUBSURFACE CONDITIONS DO NOT PERMIT DRIVING OF SHEET PILING
SCALE: 1/4" = 1'-0"

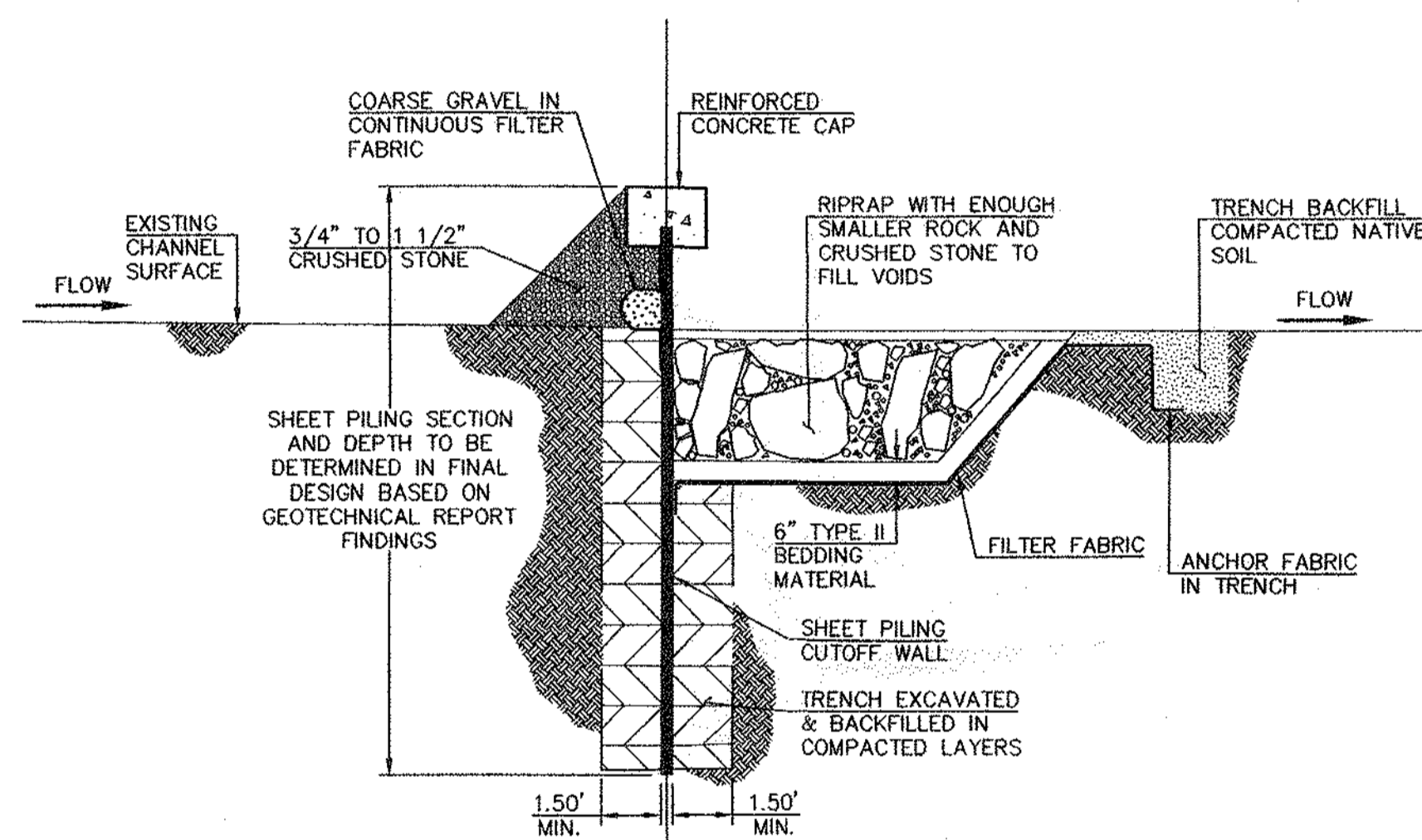


SECTION REINFORCED CONCRETE CUTOFF WALL OPTION SET FLUSH WITH CHANNEL
SCALE: 1/4" = 1'-0"

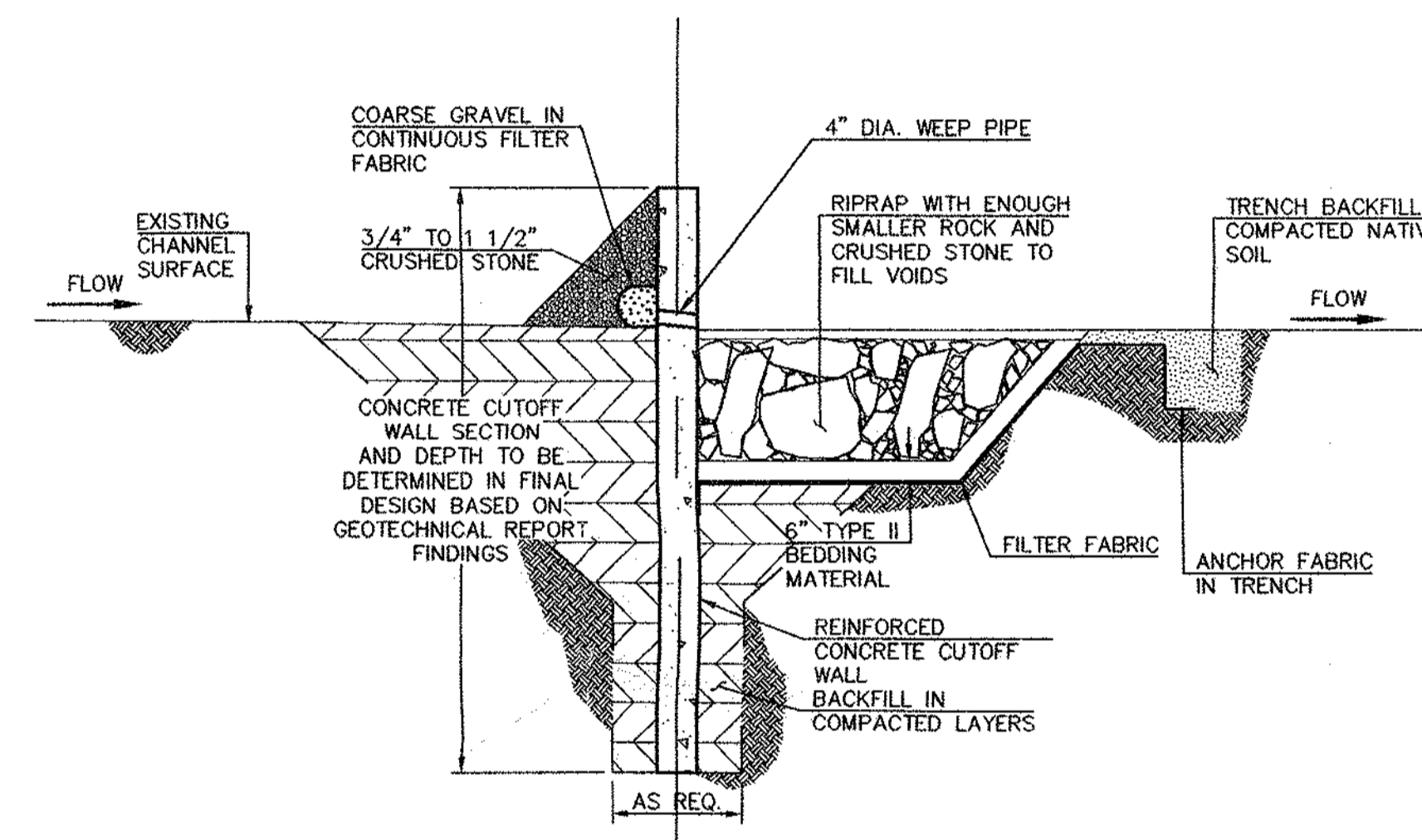
PROPOSED CHANNEL CHECK STRUCTURE OPTIONS



SECTION SHEET PILING WEIR/DROP STRUCTURE DRIVEN SHEET PILING OPTION
SCALE: 1/4" = 1'-0"

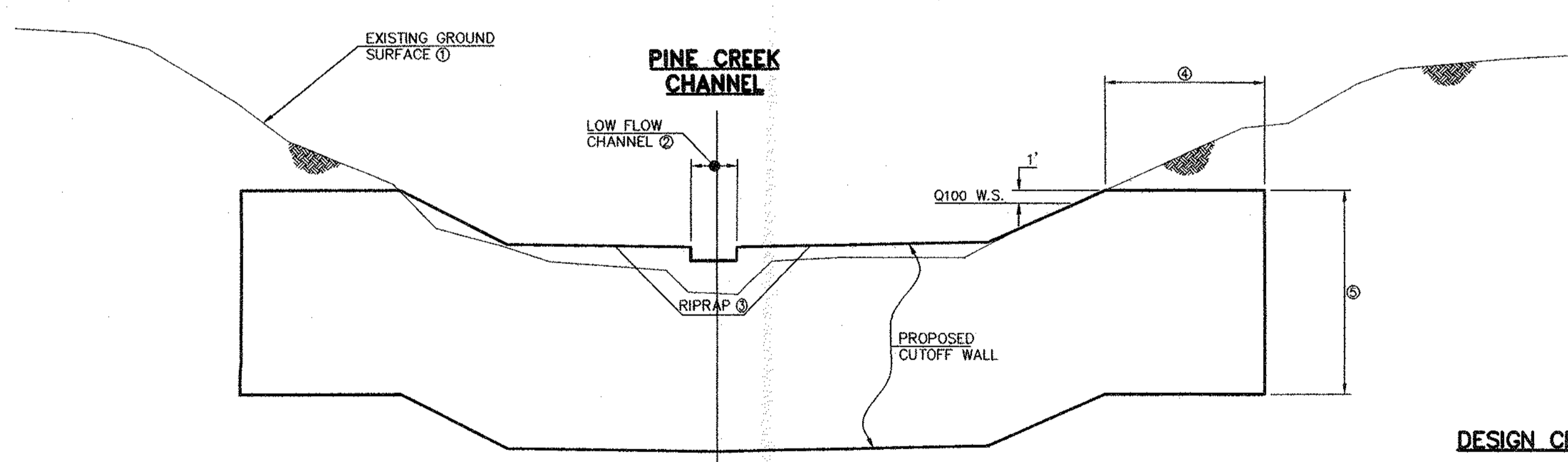


SECTION SHEET PILING WEIR/DROP STRUCTURE SHEET PILING DRIVEN IN PREPARED TRENCH WHERE EXISTING SUBSURFACE CONDITIONS DO NOT PERMIT DRIVING OF SHEET PILING
SCALE: 1/4" = 1'-0"



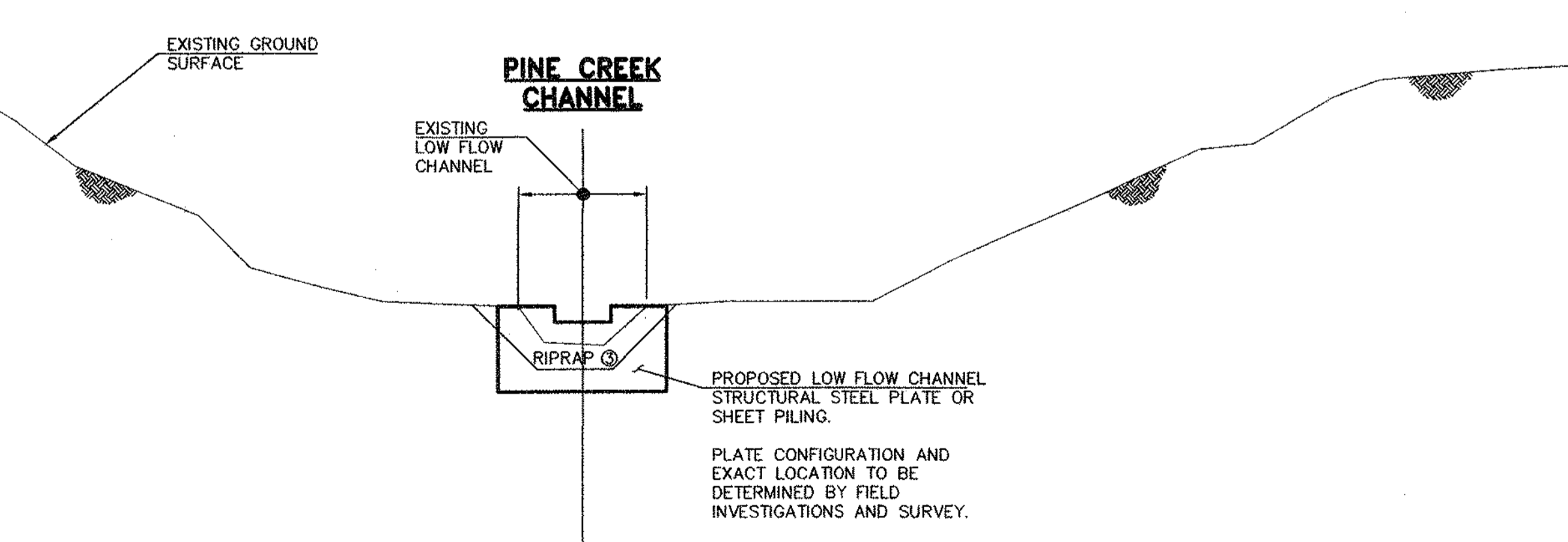
SECTION REINFORCED CONCRETE CUTOFF WALL OPTION WEIR/DROP STRUCTURE
SCALE: 1/4" = 1'-0"

PROPOSED CHANNEL DROP STRUCTURE OPTIONS



CHANNEL CHECK STRUCTURE TYPICAL CROSS SECTION - CUTOFF WALL SHEET PILING OR REINFORCED CONCRETE
NOT TO SCALE

- DESIGN CRITERIA:**
1. FINAL CONFIGURATION OF THE CUTOFF WALLS SHALL BE BASED ON FIELD SURVEYED CROSS SECTIONS.
 2. A NOTCH IN THE CUTOFF WALL FOR THE LOW FLOW CHANNEL SHALL BE LOCATED TO DIRECT LOW FLOW AWAY FROM THE CHANNEL BANKS AND MINIMIZE PONDING DEPTHS ON THE UPSTREAM SIDE.
 3. A RIPRAP SPLASH PAD SHALL BE PLACED DIRECTLY DOWNSTREAM OF THE LOW FLOW NOTCH WHERE A DROP IS INTENDED.
 4. CUTOFF WALLS SHALL EXTEND INTO THE CHANNEL BANKS AS DETERMINED IN FINAL DESIGN.
 5. THE REQUIRED DEPTH OF CUTOFF WALLS SHALL BE BASED ON STRUCTURAL ANALYSIS AND GEOTECHNICAL DATA.



CHANNEL CROSS SECTION PROPOSED LOW FLOW CHANNEL CHECK STRUCTURE
NOT TO SCALE

THIS DRAWING IS INTENDED TO SHOW CONCEPTS ONLY AND IS NOT INTENDED FOR CONSTRUCTION.

UNTIL SUCH TIME AS THESE DRAWINGS ARE APPROVED BY THE APPROPRIATE REVIEWING AGENCIES, JR ENGINEERING APPROVES THEIR USE ONLY FOR THE PURPOSES AUTHORIZED BY WRITTEN AUTHORIZATION.

PREPARED FOR
LP47, LLC dba LA PLATA INVESTMENTS
2315 BRIARGATE PARKWAY, SUITE 100
COLORADO SPRINGS, COLORADO 80920
719-260-7477 • FAX 719-260-7088

J.R. ENGINEERING
A Subsidiary of Westair
4310 ArrowsWest Drive • Colorado Springs, CO 80907
719-592-2588 • Fax 719-592-8668
www.jrengineering.com

NO.	REVISION	DATE	BY	DATE	H-SCALE	V-SCALE	DATE	DESIGNED BY	DRAWN BY	CHECKED BY	SHEET	OF	JOB NO.
UPPER PINE CREEK CHANNEL ANALYSIS													
CONCEPTUAL CHECK STRUCTURE DETAIL SHEET													

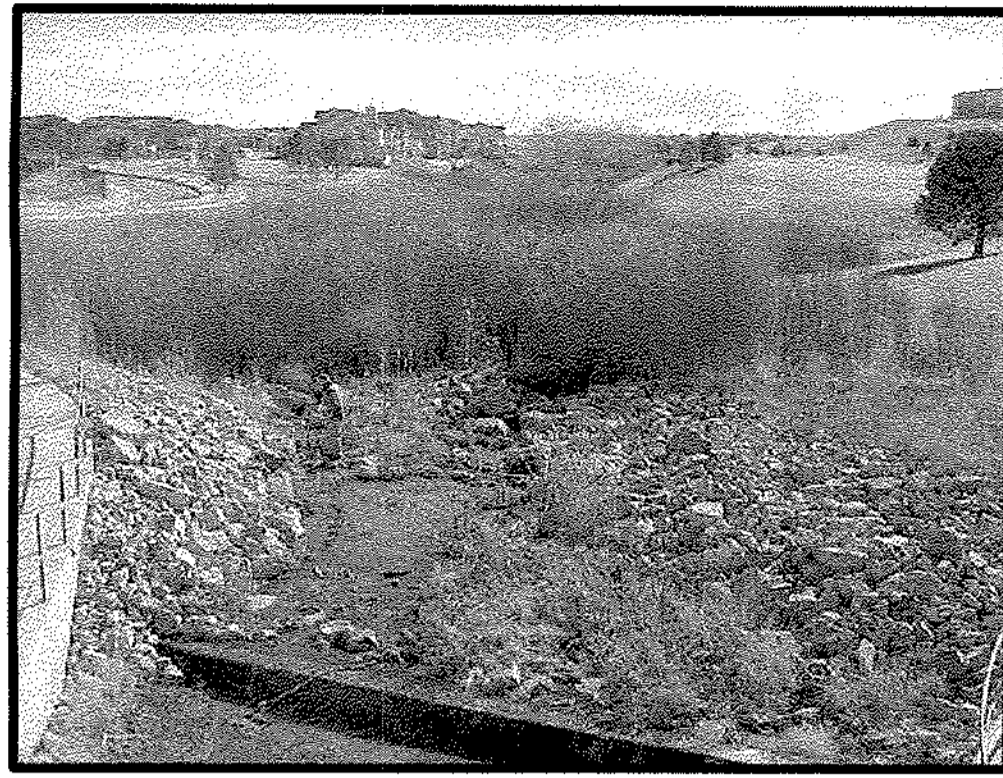


PHOTO #1
CHAPEL HILLS BRIDGE
LOOKING UPSTREAM

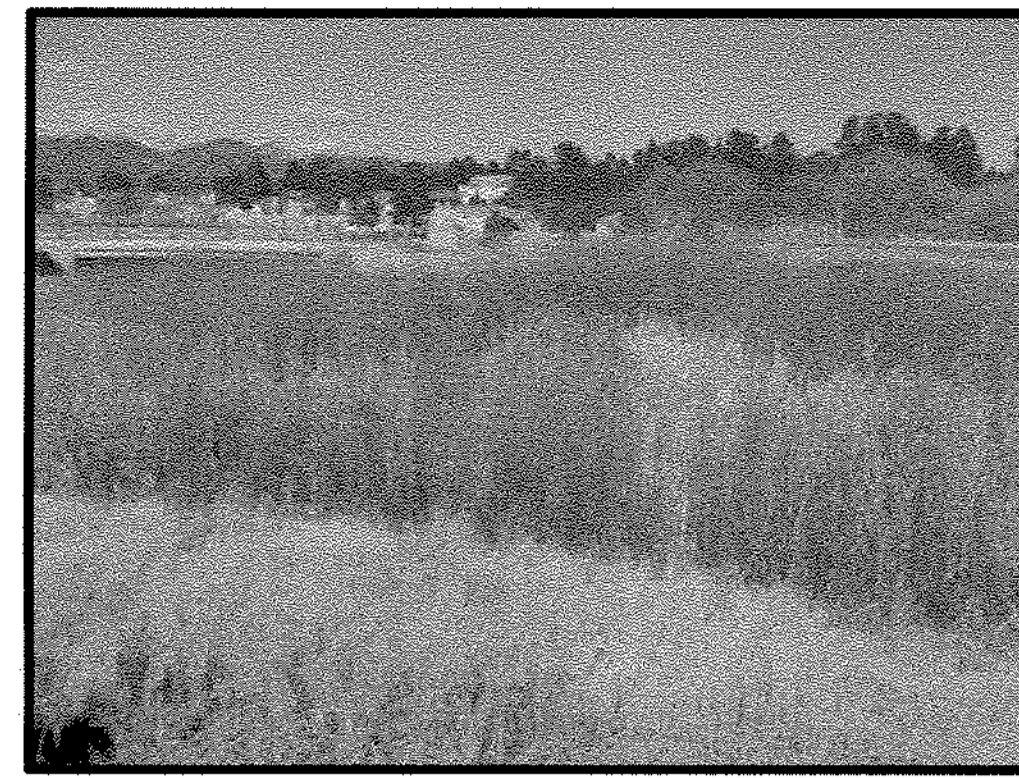


PHOTO #2
SOUTH SIDE OF PINE CREEK 250'±
ABOVE CHAPEL HILLS BRIDGE
LOOKING DOWNSTREAM

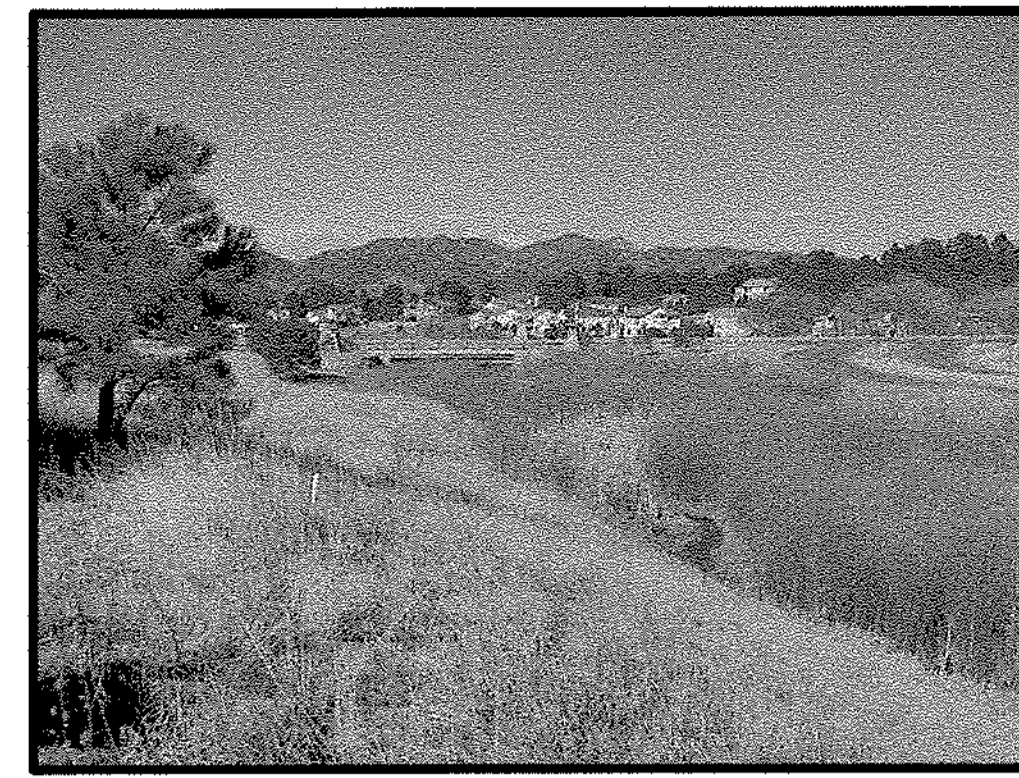


PHOTO #3
SOUTH SIDE OF PINE CREEK 400'±
ABOVE CHAPEL HILLS BRIDGE
LOOKING DOWNSTREAM

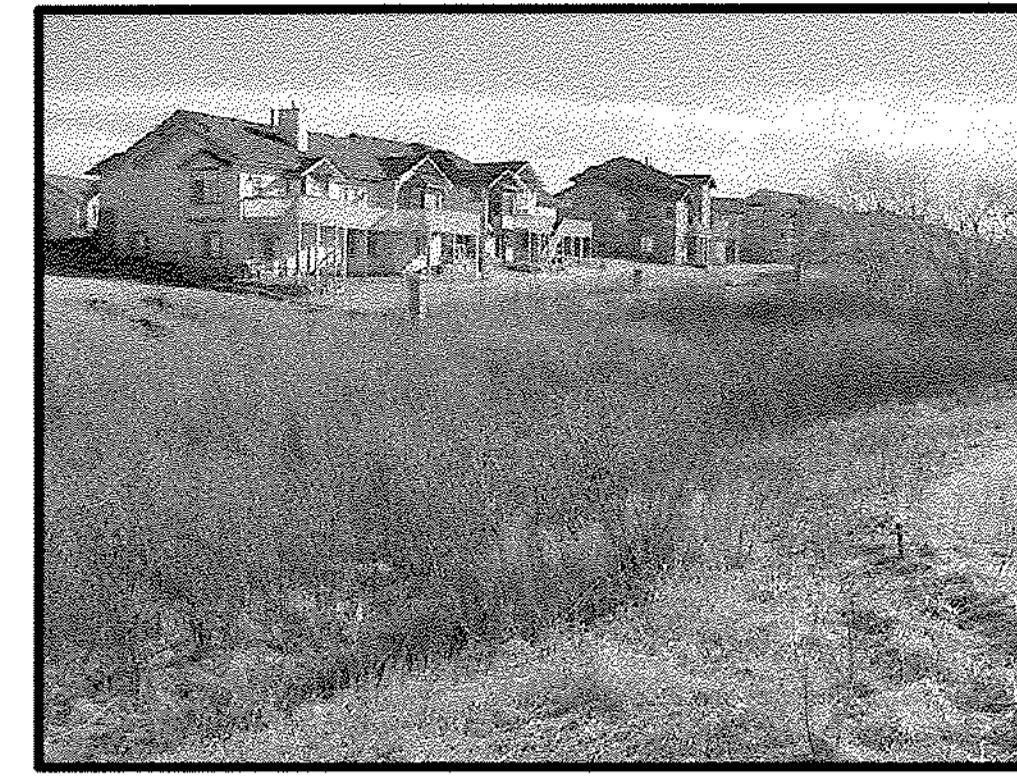


PHOTO #4
SOUTH SIDE OF PINE CREEK 400'±
ABOVE CHAPEL HILLS BRIDGE
LOOKING UPSTREAM



PHOTO #5
SOUTH SIDE OF PINE CREEK
LOOKING DOWNSTREAM



PHOTO #6
SOUTH SIDE OF PINE CREEK
ACROSS & DOWNSTREAM



PHOTO #7
SOUTH SIDE OF PINE CREEK
LOOKING DOWNSTREAM



PHOTO #8
SOUTH SIDE OF PINE CREEK
LOOKING UPSTREAM
TOWARD GOLF CART CROSSING



PHOTO #9
NORTH SIDE OF PINE CREEK
LOOKING DOWNSTREAM



PHOTO #10
NORTH SIDE OF PINE CREEK
LOOKING UPSTREAM



PHOTO #11
NORTH SIDE OF PINE CREEK
LOOKING UPSTREAM



PHOTO #12
NORTH SIDE OF PINE CREEK
LOOKING DOWNSTREAM



PHOTO #13
NORTH SIDE OF PINE CREEK
LOOKING UPSTREAM



PHOTO #14
NORTH SIDE OF PINE CREEK
LOOKING UPSTREAM



PHOTO #15
NORTH SIDE OF PINE CREEK
LOOKING DOWNSTREAM



PHOTO #16
NORTH SIDE OF PINE CREEK
84" OUTFALL LOCATION
LOOKING AT STREAM

UNTIL SUCH TIME AS
THESE DRAWINGS ARE
REVISIONED OR
APPROVED BY THE
ENGINEERING
AGENCIES, J.R. ENGINEERING
APPROVES THEIR USE
ONLY FOR THE PURPOSES
DESIGNATED BY WRITTEN
AUTHORIZATION.

PREPARED FOR
**LP47, LLC dba LA PLATA
INVESTMENTS**
2315 BIRMGATE PARKWAY, SUITE 100
COLORADO SPRINGS, COLORADO 80920
719-260-7477 • FAX 719-260-7088

J.R. ENGINEERING
A Subsidiary of Heery
430 Aronswell Drive • Colorado Springs, CO 80907
719-582-2833 • Fax 719-582-6656
www.jrengineering.com

No.	REVISION	BY	DATE	H-SCALE	V-SCALE	DATE	DESIGNED BY	DRAWN BY	CHECKED BY
				N/A	N/A	03/06/02	DLM	DLM	DLM

UPPER PINE CREEK CHANNEL ANALYSIS
CHANNEL PHOTOGRAPHS
PHOTOS 1 THROUGH 16

X:\28717000_28231746\F10105.ppt.dwg Layout1_02232004 07:00:38 AM ewe@jre.com



PHOTO #17
84" OUTFALL LOCATION
LOOKING DOWNSTREAM



PHOTO #18
84" OUTFALL LOCATION
LOOKING DOWNSTREAM

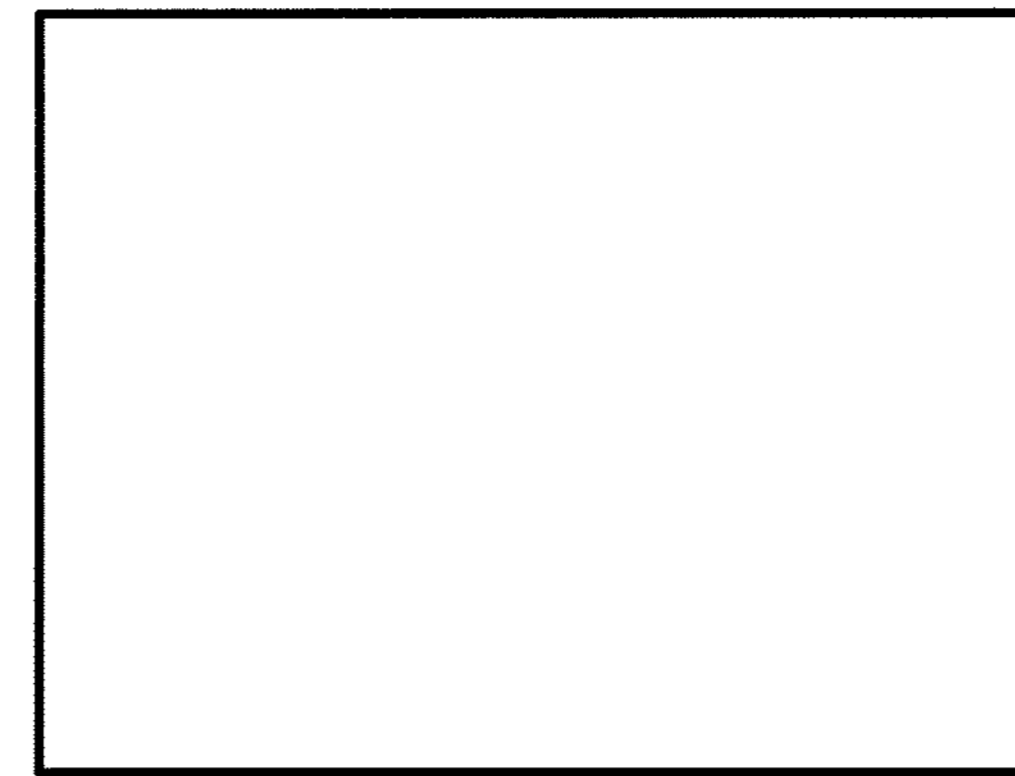


PHOTO #19
NOT USED



PHOTO #20
AT SPILLWAY OF EXISTING INLINE POND
EAST OF DETENTION FACILITY 'E'
LOOKING UPSTREAM



PHOTO #21
EAST OF DETENTION FACILITY 'E'
LOOKING UPSTREAM



PHOTO #22
CENTER OF PINE CREEK
LOOKING UPSTREAM



PHOTO #23
NORTH SIDE OF PINE CREEK
LOOKING UPSTREAM

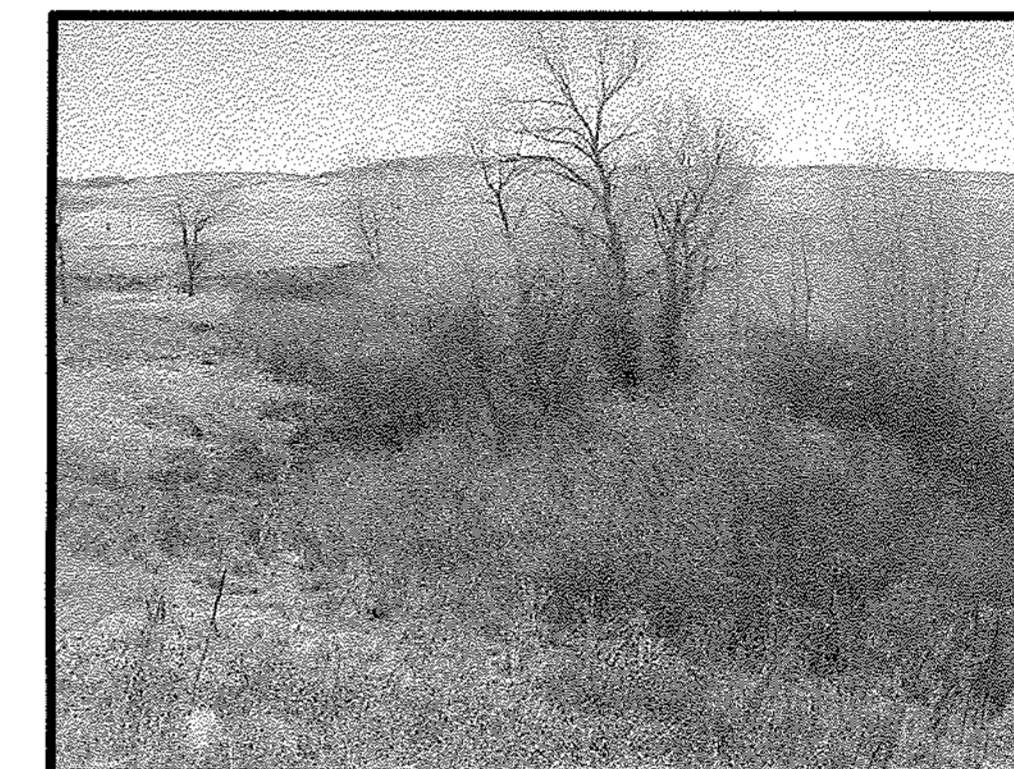


PHOTO #24
NORTH SIDE OF PINE CREEK
LOOKING UPSTREAM



PHOTO #25
SOUTH SIDE OF PINE CREEK
LOOKING UPSTREAM



PHOTO #26
SOUTH SIDE OF PINE CREEK
LOOKING UPSTREAM

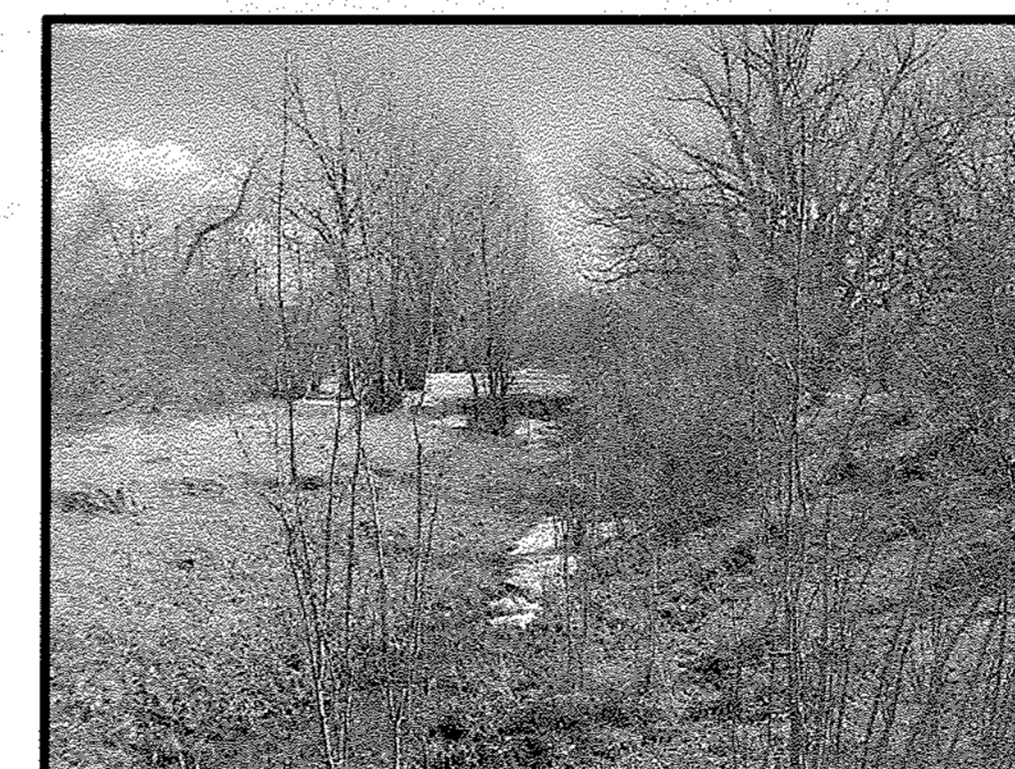


PHOTO #27
CENTER OF PINE CREEK
LOOKING UPSTREAM

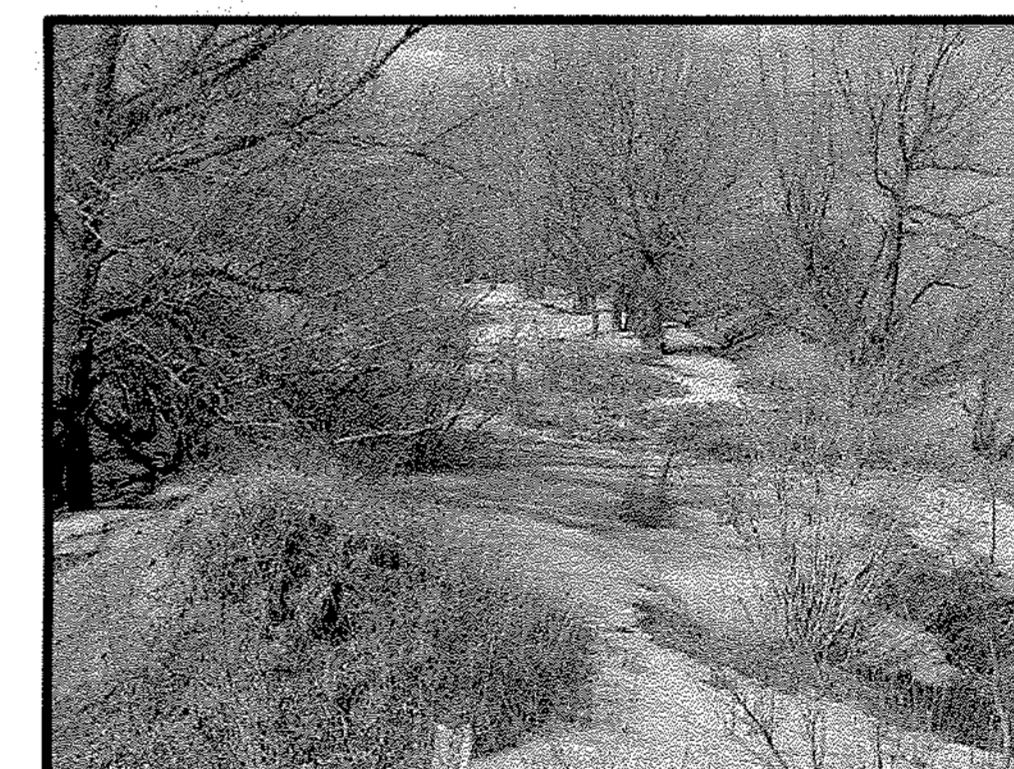


PHOTO #28
SOUTH SIDE OF PINE CREEK
LOOKING DOWNSTREAM

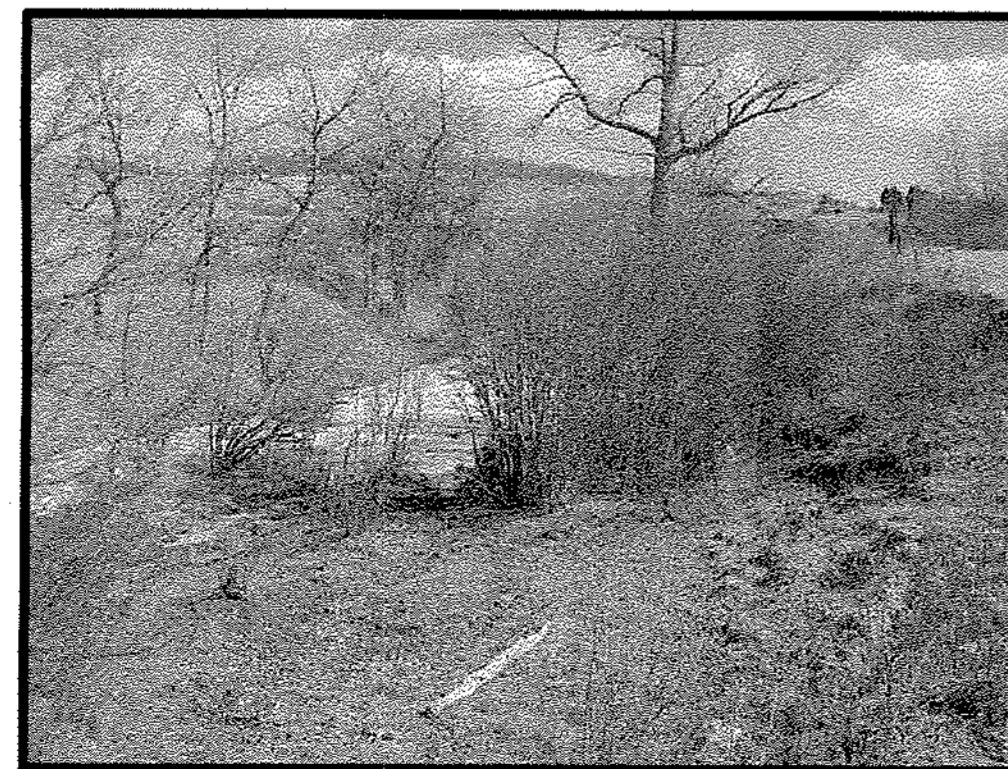


PHOTO #29
SOUTH SIDE OF PINE CREEK
LOOKING UPSTREAM



PHOTO #30
SOUTH SIDE OF PINE CREEK
LOOKING UPSTREAM



PHOTO #31
SOUTH SIDE OF PINE CREEK
SOUTH EDGE OF INLINE POND
LOOKING UPSTREAM



PHOTO #32
SOUTH SIDE OF PINE CREEK
LOOKING UPSTREAM

UNTIL SUCH TIME AS
THESE DRAWINGS ARE
APPROVED BY THE
APPROPRIATE REVIEWING
AGENCIES, J.R. ENGINEERING
APPROVES THEIR USE
ONLY FOR THE PURPOSES
DESIGNATED BY WRITTEN
AUTHORIZATION.

PREPARED FOR

J.R. ENGINEERING
A Subsidiary of Trachten

430 Arroyo Vista Drive • Colorado Springs, CO 80907
719-533-2598 • Fax: 719-533-6683
www.jrengineering.com

REVISION		DATE	
No.	REVISION	BY	DATE

UPPER PINE CREEK CHANNEL ANALYSIS

CHANNEL PHOTOGRAPHS

PHOTOS 17 THROUGH 32



PHOTO #33
CENTER OF PINE CREEK
LOOKING DOWNSTREAM



PHOTO #34
CENTER OF PINE CREEK
LOOKING UPSTREAM



PHOTO #35
CENTER OF PINE CREEK
LOOKING DOWNSTREAM



PHOTO #36
CENTER OF PINE CREEK
LOOKING UPSTREAM



PHOTO #37
CENTER OF PINE CREEK
LOOKING UPSTREAM

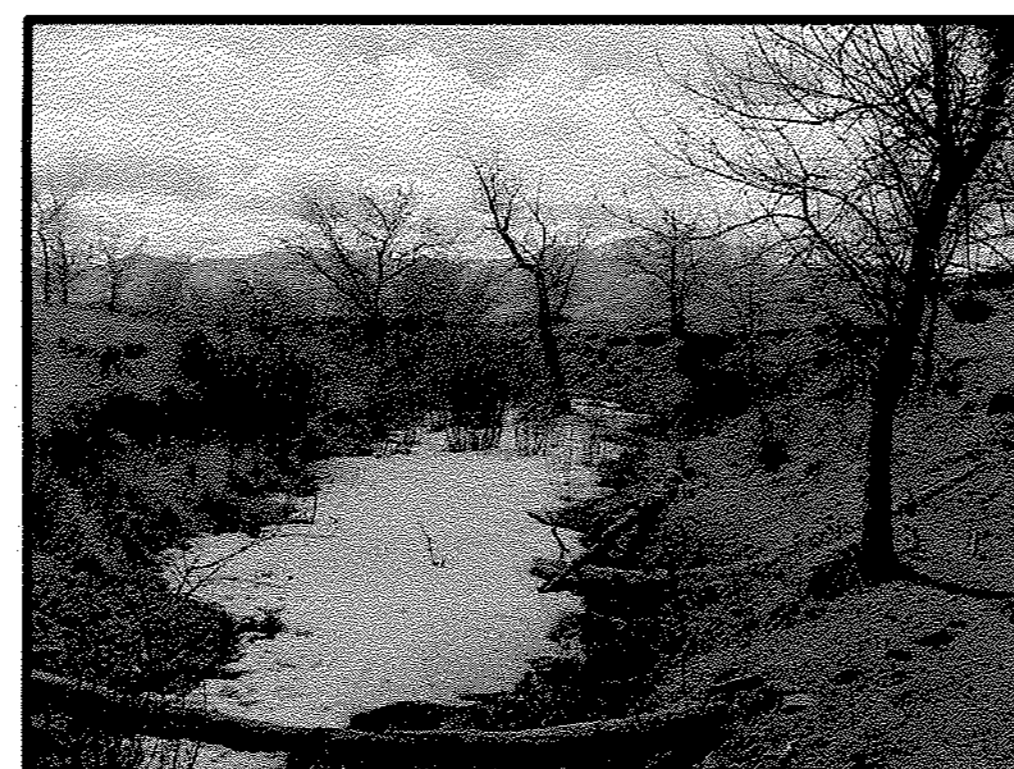


PHOTO #38
NORTH SIDE OF PINE CREEK
LOOKING DOWNSTREAM



PHOTO #39
CENTER OF PINE CREEK
LOOKING UPSTREAM

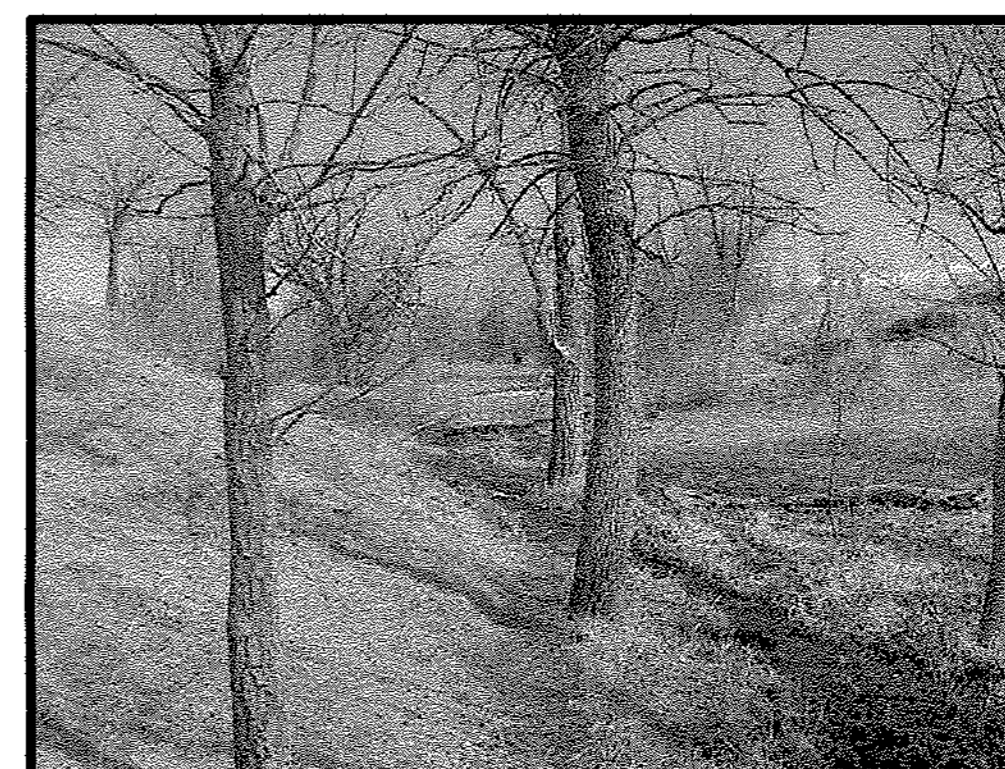


PHOTO #40
CENTER OF PINE CREEK
LOOKING UPSTREAM



PHOTO #41
CENTER OF PINE CREEK
LOOKING DOWNSTREAM



PHOTO #42
CENTER OF PINE CREEK
LOOKING UPSTREAM



PHOTO #43
CENTER OF PINE CREEK
LOOKING UPSTREAM



PHOTO #44
CENTER OF PINE CREEK
LOOKING UPSTREAM



PHOTO #45
CENTER OF PINE CREEK
LOOKING UPSTREAM



PHOTO #46
CENTER OF PINE CREEK
LOOKING UPSTREAM



PHOTO #47
CENTER OF PINE CREEK
LOOKING UPSTREAM



PHOTO #48
CENTER OF PINE CREEK
LOOKING DOWNSTREAM

UNTIL SUCH TIME AS THESE DRAWINGS ARE APPROVED BY THE APPROPRIATE REVIEWING AGENCIES, J.R. ENGINEERING APPROVES THEIR USE ONLY FOR THE PURPOSES DESIGNATED BY WRITTEN AUTHORIZATION.

PREPARED FOR
LP47, LLC dba LA PLATA INVESTMENTS
2315 BRIMGATE PARKWAY, SUITE 100
COLORADO SPRINGS, COLORADO 80920
719-260-7477 • FAX 719-260-7088

J.R. ENGINEERING
A Subsidiary of Newham
430 Arroyos West Drive • Colorado Springs, CO 80907
719-593-2593 • Fax 719-528-6863
www.jrengineering.com

No.	REVISION	BY	DATE

UPPER PINE CREEK CHANNEL ANALYSIS

CHANNEL PHOTOGRAPHS

PHOTOS 33 THROUGH 48

H-SCALE: N/A
V-SCALE: N/A
DATE: 03/06/02
DESIGNED BY: DLM
DRAWN BY: DLM
CHECKED BY: DLM

SHEET 10 OF 11

JOB NO. 28717.45

X:\87000\001\871746\PHOTOSET\03.dwg, Layout1, 02/23/2004 08:12:22 AM, ssmwryk



PHOTO #49
CENTER OF PINE CREEK
LOOKING UPSTREAM



PHOTO #50
SOUTH SIDE OF PINE CREEK
LOOKING UPSTREAM

UPPER PINE CREEK CHANNEL ANALYSIS

CHANNEL PHOTOGRAPHS

PHOTOS 49 AND 50

SHEET 11 OF 11
JOB NO. 28717.45

H-SCALE	N/A	No.	REVISION	BY	DATE
V-SCALE	N/A				
DATE	03/06/02				
DESIGNED BY	DLM				
DRAWN BY	DLM				
CHECKED BY					



J.R. ENGINEERING
A Subsidiary of Heeschen

490 ArrowWest Drive • Colorado Springs, CO 80907
719-583-2583 • Fax: 719-528-6618
www.jrengineering.com

PREPARED FOR
LP47, LLC dba LA PLATA INVESTMENTS

2315 BRARGATE PARKWAY, SUITE 100
COLORADO SPRINGS, COLORADO 80920
719-260-7477 • FAX 719-260-7088

UNTIL SUCH TIME AS THESE DRAWINGS ARE APPROVED BY THE APPROPRIATE REVIEWING AGENCIES, JR ENGINEERING APPROVES THEIR USE FOR THE PURPOSES DESCRIBED IN THIS AUTHORIZATION.